

# Park Overlay Service Areas & Cross-Boundary Agreement

August 19, 2019  
Camas City Council

Monica Tubberville, Park Planner



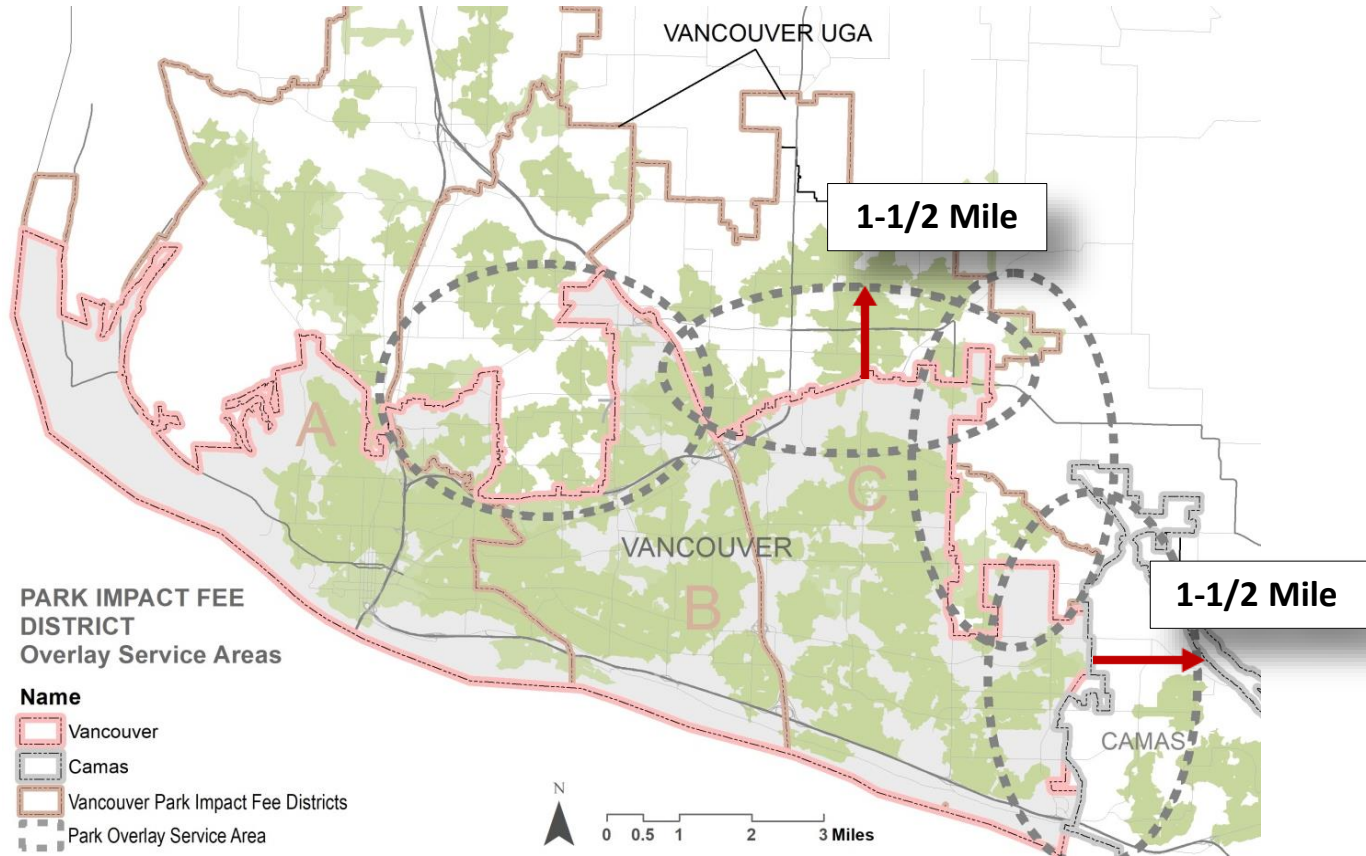
# Context

- Growing population and demand
- Declining options & rising costs
- All jurisdictions facing similar challenges
- Opportunities to partner along shared boundary
- Regulations unclear on use of PIF outside city limits

# Purpose

- Clarify Use of PIF Outside City Limits
- Limited to Overlay Service Areas - Map and Criteria
- Encourage Partnerships - **Cross-Boundary Agreement**
  - Leverage Resources
  - Serve the best interest of the public

# Park Overlay Service Areas



# Criteria - Park Overlay Service Areas

- System deficit - Lack of reasonable alternatives
- Park needs met by project
- Aligns with Capital Facilities Plan
- Benefits equal or exceed options within district
- Explore partnership opportunities

# Cross Boundary Agreement - Concept

- Acknowledges shared desire to partner where feasible
- Coordinate Planning
- Leveraging Resources
- Provide quality recreational opportunities along common boundaries for mutual benefit
- Foundational practice as public servants

# Cross Boundary Agreement

- Interlocal Agreement with contiguous jurisdictions
  - Camas, Clark County, Vancouver
  - Mutual benefit – regardless of jurisdiction
- All parties Commit to Consider
  - Adoption of similar Park Overlay Service Areas
  - Amendments to CFP to identify potential projects

# Review Schedule

April 17th	Vancouver PRAC
May 14th	Planning Commission
June 11th	Planning Commission
June 14th	County PAB
June 26th	Camas PRC
July 23rd	Planning Commission
<b>Aug 19th</b>	<b>Camas City Council</b>
<b>Sept. 9th</b>	<b>Vancouver City Council</b>
<b>TBD</b>	<b>Clark County Council</b>
<b>TBD</b>	<b>Clark County Council</b>
<b>Sept. 16th</b>	<b>Vancouver City Council</b>



# Requested Action

- Support approval of the **Cross Boundary Service Area Overlay Agreement** to encourage partnership opportunities and leverage available resources.



# Questions?

**Julie Hannon**, Parks & Recreation Director  
**Monica Tubberville**, Park Planner

# Park Overlay Service Areas

