

- NOTES:
1. ASSESSMENT ONLY INCLUDES 'SIGNIFICANT' TREES' WHICH HAVE TREE PROTECTION ZONES THAT MAY BE IMPACTED BY CONSTRUCTION, INCLUDING CANOPIES OF TREES LOCATED ON ADJACENT PROPERTY PER CAMAS DEVELOPMENT CODE 18.03.050, 'SIGNIFICANT TREES' ARE DEFINED AS 12" OR GREATER DBH DECIDUOUS TREES AND 8" OR GREATER DBH CONIFEROUS TREES.
 2. HAZARD RATING IS COMBINATION OF NUMERICAL SCORE EVALUATING PROBABILITY OF FAILURE (1-5 POINTS), SIZE OF DEFECTIVE PART (1-3 POINTS) AND TARGET AREA (1-4 POINTS).

ZERO RISK	0-2 POINTS
LOW RISK	3-5 POINTS
MODERATE RISK	6-8 POINTS
HIGH RISK	9-11 POINTS
EXTREME RISK	12 POINTS
 3. DIAMETER BREAST HEIGHT (DBH) MEASURED AT 4.5' HT. FROM GROUND UNLESS OTHER WISE NOTED; EXPRESSED IN CALIPER-INCHES IN TABLE. DBH OF MULTI-STEM TREES CALCULATED BY ADDING DIAMETER OF LARGEST STEM TO ONE-HALF THE DIAMETER OF EACH ADDITIONAL STEM.
 4. TREE PROTECTION ZONE DISTANCE FROM TRUNK CALCULATED BY MULTIPLIER BASED ON CONSTRUCTION TOLERANCE OF OF SPECIES AND TREE AGE TIMES DBH.
 5. WITHIN THE TREE PROTECTION ZONES, THERE SHALL BE NO TEMPORARY OR PERMANENT STORAGE OR STAGING OF MATERIALS. SOIL, OR EQUIPMENT AND NO DUMPING OF REFUSE.

GREENWORKS

GreenWorks, P.C.
Landscape Architecture
Environmental Design

24 NW 2nd Avenue, Suite 100
Portland, Oregon 97209
Ph.503.222.5612/F.503.222.2283
Email: info@greenworkspc.com

GREENWORKS PROJECT NO:
118060.2

E PLAN AND ASSESSMENT BY
WHYNN J. DEAN, ISA CERTIFIED
IST #PN-6396A AND TRAQ #1571

[illegible]

LACAMAS CREEK PARK TREE PLAN

wallis
engineering
 215 W 4th Street, Suite 200
 Vancouver, WA 98660
 360.695.7041

LACAMAS CREEK
SANITARY SEWER
PUMP STATION
IMPROVEMENTS



CITY PROJECT NO. S1000

DRAWING NO:
T-101

TABLE OF TREES									<div>GREENWORKS</div> <div>GreenWorks, P.C. Landscape Architecture Environmental Design</div> <div>24 NW 2nd Avenue, Suite 100 Portland, Oregon 97209 Ph:503.222.5612 / F:503.222.2283 Email: info@greenworkspc.com</div> <div>GREENWORKS PROJECT NO: 118060.2</div>
TREE NUMBER	CONIFER OR DECID.	COMMON NAME	BOTANICAL NAME	SIZE (DBH)	CONDITION (STRUCTURAL STABILITY)	COMMENTS	HAZARD (RATING)	RECOMMENDATION	
1	-	ID NUMBER NOT USED							
2	D	BIGLEAF MAPLE	ACER MACROPHYLLUM	17	FAIR	#2 AND #3 ARE CODOMINANT STEMS OF SAME TREE. ABNORMAL BARK PATTERNS MAY INDICATE DECAY IN STEMS. NO CONKS EVIDENT BUT HEAVY IVY COVER MAY BE CONCEALING ANY ON GROUND. SOUNDING REVEALED NO OBVIOUS DECAY COLUMN. THIS TREE SHOULD BE RE-EVALUATED ONCE CANOPY LEAFS OUT. MORE IN-DEPTH TESTING (DRILLING, SONIC TOMOGRAPHY) MAY BE HELPFUL IF DESIRE IS TO RETAIN TREE.		RETAIN AND MONITOR	
3	D	BIGLEAF MAPLE	ACER MACROPHYLLUM	17	FAIR				
4	D	NOT SIGNIFICANT TREE		8					
5	D	OREGON WHITE OAK	QUERCUS GARRYANA	22	GOOD.	WELL-HEALED WOUNDS AT 3' HT AND BELOW.		RETAIN. PROVIDE TREE PROTECTION ZONE AS SHOWN ON PLANS PRIOR TO START OF CONSTRUCTION.	
6	D	OREGON WHITE OAK	QUERCUS GARRYANA	12	FAIR	TREE LOCATED AT TOP OF SLOPE OVERLOOKING CREEK. NUMEROUS SMALL CONKS ON TRUNK MAY INDICATE COLUMN OF INTERNAL DECAY NOT REVEALED BY SOUNDING. HEAVY IVY COVER OBSCURES INSPECTION OF ROOT FLARE OR SURROUNDING GROUND. SEASONAL LACK OF FOLIAGE MEANS CANOPY HEALTH CANNOT BE REVIEWED FOR OTHER SIGNS OF INTERNAL DECAY. THIS TREE SHOULD BE RE-EVALUATED ONCE FOLIAGE IS PRESENT. DUE TO TREE'S LOCATION AND LEAN, IF IT WERE TO FAIL IT WOULD MOST LIKELY FALL EAST INTO THE CREEK (LOW TARGET RATING).		RETAIN AND MONITOR	
7	D	NOT SIGNIFICANT TREE		8					
8	C	DOUGLAS FIR	PSEUDOTSUGA MENZIESII	48	GOOD	SUPPRESSED BY #9		RETAIN	
9	C	DOUGLAS FIR	PSEUDOTSUGA MENZIESII	35	GOOD	SUPPRESSED BY #8.		RETAIN	
10	D	NOT SIGNIFICANT TREE		8					
11	C	DOUGLAS FIR	PSEUDOTSUGA MENZIESII	44	GOOD			RETAIN	
12	C	DOUGLAS FIR	PSEUDOTSUGA MENZIESII	17	FAIR	SUPPRESSED BY #13. SELF-CORRECTED LEAN.		RETAIN	
13	C	WESTERN RED CEDAR	THUJA PLICATA	19	FAIR	DECAYED STUB ON SE SIDE WITH CENTRAL COLUMN OF DECAY. TOP GONE. SUPPRESSED BY #11 AND #15.	YES (9)	REMOVE FOR CONDITION. ALTHOUGH THUJA PLICATA CAN REMAIN STANDING WITH CENTRAL COLUMN OF DECAY, THIS TREE'S ADJACENCY TO THE TRAIL MEANS THE TARGET RATING IS VERY HIGH. A CODOMINANT STEM IS ALREADY GONE LEAVING A DECAY CAVITY. IF DESIRE IS TO RETAIN THIS TREE, MORE INVASIVE TESTING (DRILLING/SONIC TOMOGRAPHY) SHOULD BE USED TO GIVE MORE INFO ON EXTENT OF INTERNAL DECAY AND THICKNESS OF STEM WALL.	
14	C	DOUGLAS FIR	PSEUDOTSUGA MENZIESII	28	GOOD	SELF-CORRECTED LEAN. ROOTED UNDER #15		RETAIN	
15	C	WESTERN RED CEDAR	THUJA PLICATA	25	GOOD			RETAIN	
16	C	DOUGLAS FIR	PSEUDOTSUGA MENZIESII	40	GOOD	TREE AT CREST OF SLOPE. SWELLING ON UPHILL SIDE AT BASE OF TRUNK APPEARS TO CONTAIN OLD PHAEOLUS SCHWEINTZII CONK. NO OTHER CONKS OR RESINOSUS OBSERVED.		RETAIN AND MONITOR	
17	C	DOUGLAS FIR	PSEUDOTSUGA MENZIESII	20	GOOD	LOW CROWN RATIO. AT CREST OF SLOPE. SLIGHT SELF-CORRECTED LEAN.		RETAIN.	
18	C	DOUGLAS FIR	PSEUDOTSUGA MENZIESII	28	GOOD	SUPPRESSED ON NORTH SIDE BY TREES UPHILL (OFF-SITE)		RETAIN	
19	D	OREGON OAK	QUERCUS GARRYANA	18	POOR	TOP GONE. DECAYED STUB AT 15' HT. LOTS OF PRUNING CUTS NOT WELL-HEALED. LARGE NUMBERS OF SMALL YOUNG FUNGUS ON STEM. TREE LOCATED ON SLOPE ABOVE LAWN AREA.	YES (7)	REMOVE FOR CONDITION.	
20A	D	BIGLEAF MAPLE	ACER MACROPHYLLUM	18 + 20	FAIR	SURVEY GROUPED 3 STEMS AS ONE TREE; ACTUALLY TWO TREES: ONE MAPLE WITH TWO STEMS AND ONE SMALLER OAK GROWING IN CLOSE PROXIMITY. THE MAPLE HAS TWO CODOMINANT STEMS WITH INCLUDED BARK, SPLIT ALONG INCLUSION LINE AND CAVITY WITH CALLUSED EDGES. NO OBVIOUS DECAY COLUMN REVEALED BY SOUNDING WITH MALLET; GROUND INSPECTION LIMITED BY HEAVY IVY GROWTH.	YES (8)	EITHER REMOVE OR DO CROWN REDUCTION TO REDUCE PROBABILITY OF FAILURE IF DESIRE IS TO RETAIN TREE. TREE IS ON SLOPE ABOVE LAWN (HIGH TARGET RATING/ FREQUENTLY OCCUPIED) AND ANOTHER TREE HAS RECENTLY FAILED TO THE SOUTH OF THIS ONE.	
20B	D	GARRY OAK	QUERCUS GARRYANA	10	FAIR	THE OAK OF THIS GROUP HAS NO OBVIOUS HEALTH PROBLEMS, BUT IS LEANING SIGNIFICANTLY ON THE SLOPE ABOVE THE LAWN AREA. HEAVY IVY INFESTATION OF GROUND MAKES DETECTION OF ANY FUNGAL FRUITING BODIES ON ROOTS IMPOSSIBLE. RE-EVALUATE WHEN CANOPY LEAFS OUT FOR ANY SIGNS OF ROOT ROT.		RETAIN AND RE-EVALUATE. CROWN REDUCTION TO REDUCE WEIGHT.	
21	D	BIGLEAF MAPLE	ACER MACROPHYLLUM	12	GOOD	SELF-CORRECTED LEAN DUE TO SLOPE. HEAVY IVY INFESTATION.		RETAIN	
22	D	BIGLEAF MAPLE	ACER MACROPHYLLUM	12	FAIR	TOP IS GONE, HEAVY IVY INFESTATION. CAVITY AT ROOT FLARE ON DOWNHILL SIDE. TREE ON SLOPE ABOVE LAWN AREA.		REMOVE	
23	D	BIGLEAF MAPLE	ACER MACROPHYLLUM	12 + 16	GOOD	CODOMINANT AT 2' HT. NO CRACK OR SPLIT AT INCLUSION LINE. HEAVY IVY INFESTATION.		RETAIN	
24	C	DOUGLAS FIR	PSEUDOTSUGA MENZIESII	30	GOOD	HEAVY IVY INFESTATION.		RETAIN	
25	D	BIGLEAF MAPLE	ACER MACROPHYLLUM	16	FAIR	HEAVY IVY INFESTATION OBSCURING BASE. LEANS 15° TOWARDS LAWN ON STEEP SLOPE. RECOMMEND RE-EVALUATION ONCE CANOPY LEAFS OUT.		RETAIN AND MONITOR	
26	D	BIGLEAF MAPLE	ACER MACROPHYLLUM	14 + 15	FAIR	CODOMINANT STEMS AT 2' HT; NO CRACKS, CAVITIES OR CONKS OBSERVED. HEAVY IVY INFESTATION OBSCURING BASE. RECOMMEND RE-EVALUATION ONCE CANOPY LEAFS OUT TO DETERMINE AMOUNT OF DEADWOOD IN CROWN AND REVIEW FOLIAGE HEALTH. PRIOR FAILURE OF LARGE TREE TO SOUTH.		RETAIN AND MONITOR. MAY NEED CROWN CLEANING TO REDUCE WEIGHT ON BRANCHES LEANING OUT TO LAWN (TARGET AREA).	
27	D	RED ALDER	ALNUS RUBRA	16	POOR	DEAD/DYING. MULTIPLE SAPROPHYTIC CONKS ON STEM.	YES (10)	REMOVE FOR CONDITION	
28	D	RED ALDER	ALNUS RUBRA	17	POOR	DEAD/DYING. LARGE AREA OF DECAY AT BASE OF STEM ON EAST WHERE CODOMINANT STEM TORE OUT. CONKS. LEANING IN TO LAWN AREA.	YES (10)	REMOVEFOR CONDITION	
29	C	LEYLAND CYPRESS	X CUPRESSOCYPARIS LEYLANDII	17	GOOD			REMOVE FOR CONSTRUCTION	
30	C	LEYLAND CYPRESS	X CUPRESSOCYPARIS LEYLANDII	16	GOOD			REMOVE FOR CONSTRUCTION	
31	C	LEYLAND CYPRESS	X CUPRESSOCYPARIS LEYLANDII	19	GOOD			REMOVE FOR CONSTRUCTION	
32	C	LEYLAND CYPRESS	X CUPRESSOCYPARIS LEYLANDII	20	GOOD			REMOVE FOR CONSTRUCTION	
33	C	LEYLAND CYPRESS	X CUPRESSOCYPARIS LEYLANDII	19	GOOD			REMOVE FOR CONSTRUCTION	
34	C	LEYLAND CYPRESS	X CUPRESSOCYPARIS LEYLANDII	22	FAIR	CODOMINANT STEMS WITH INCLUDED BARK UP TO 5'		REMOVE FOR CONSTRUCTION	
35	C	LEYLAND CYPRESS	X CUPRESSOCYPARIS LEYLANDII	25 @ 2'	FAIR	FOUR STEMS; INCLUDED BARK AT ATTACHMENTS		REMOVE FOR CONSTRUCTION	
36	C	LEYLAND CYPRESS	X CUPRESSOCYPARIS LEYLANDII	28 @ 3'	GOOD			REMOVE FOR CONSTRUCTION	
37	D	EMPRESS TREE	PAULOWNIA TOMENTOSA	34	GOOD	ONESIDED CROWN TO SOUTH.		REMOVE FOR CONSTRUCTION	
38	D	RED ALDER	ALNUS RUBRA	31 @ 3'	POOR	CONKS, VISIBLE WHITE ROT WHERE STEM TO NORTH BROKE OUT IN PAST AND NO WOUND CLOSURE HAS OCCURRED.	YES (9)	REMOVE FOR CONDITION	
39	C	DOUGLAS FIR	PSEUDOTSUGA MENZIESII	62	GOOD	CODOMINANT STEMS WITH INCLUDED BARK UP TO 8'. WEST STEM TOP GONE		RETAIN AND MONITOR - PROVIDE TREE PROTECTION FENCING AS SHOWN ON PLANS. THE PLANNED FULL BUILD-OUT WILL IMPACT APPROXIMATELY 66% OF THIS TREE'S TPZ. RECOMMENDATION IS TO MINIMIZE IMPACTS WHERE POSSIBLE BY MOVING PLANNED IMPROVEMENTS FURTHER FROM TREE, CONSTRUCTING HARD SURFACES ON GRADE WHERE POSSIBLE AND REDUCING AREA OF FILL BY USE OF RETAINING WALLS. WALLS SHALL BE MIN. 16' FROM TRUNK TO MAINTAIN ORIGINAL GRADE WITHIN CRITICAL ZONE CLOSE TO TRUNK. MINIMIZE ROOT DAMAGE BY LIMITING WORK TO ONLY HAND TOOLS WHERE TRENCHING MUST RUN THROUGH TPZ; NO ROOTS OVER 3" TO BE SEVERED; ANY ROOTS THAT ARE PRUNED SHOULD LEAVE FLAT SURFACE WITH CLEAN EDGES; ROOTS SHALL NOT BE LEFT UNCOVERED AND ALLOWED TO DRY OUT. ARBORIST SHOULD MONITOR EXCAVATION IN CASE ROOTS OVER 3" Ø ARE ENCOUNTERED. DOUG FIRS ARE RELATIVELY TOLERANT OF FILL AS LONG AS IT DOES NOT EXCEED 25% OF THE TPZ. THIS TREE WILL NEED TO BE MONITORED ANNUALLY AFTER CONSTRUCTION TO CHECK FOR SIGNS OF DECLINE.	

DATE

BY

REVISION

NO.

LACAMAS CREEK PARK

TREE TABLE

wallis engineering

213 W 4th Street, Suite 200
Portland, Oregon 97204
503.695.7041

PROJECT NO:

1460A

DATE:

4/2019

LACAMAS CREEK

SANITARY SEWER

PUMP STATION

IMPROVEMENTS

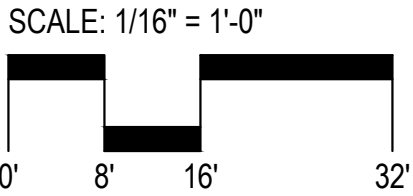
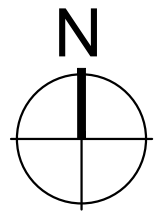
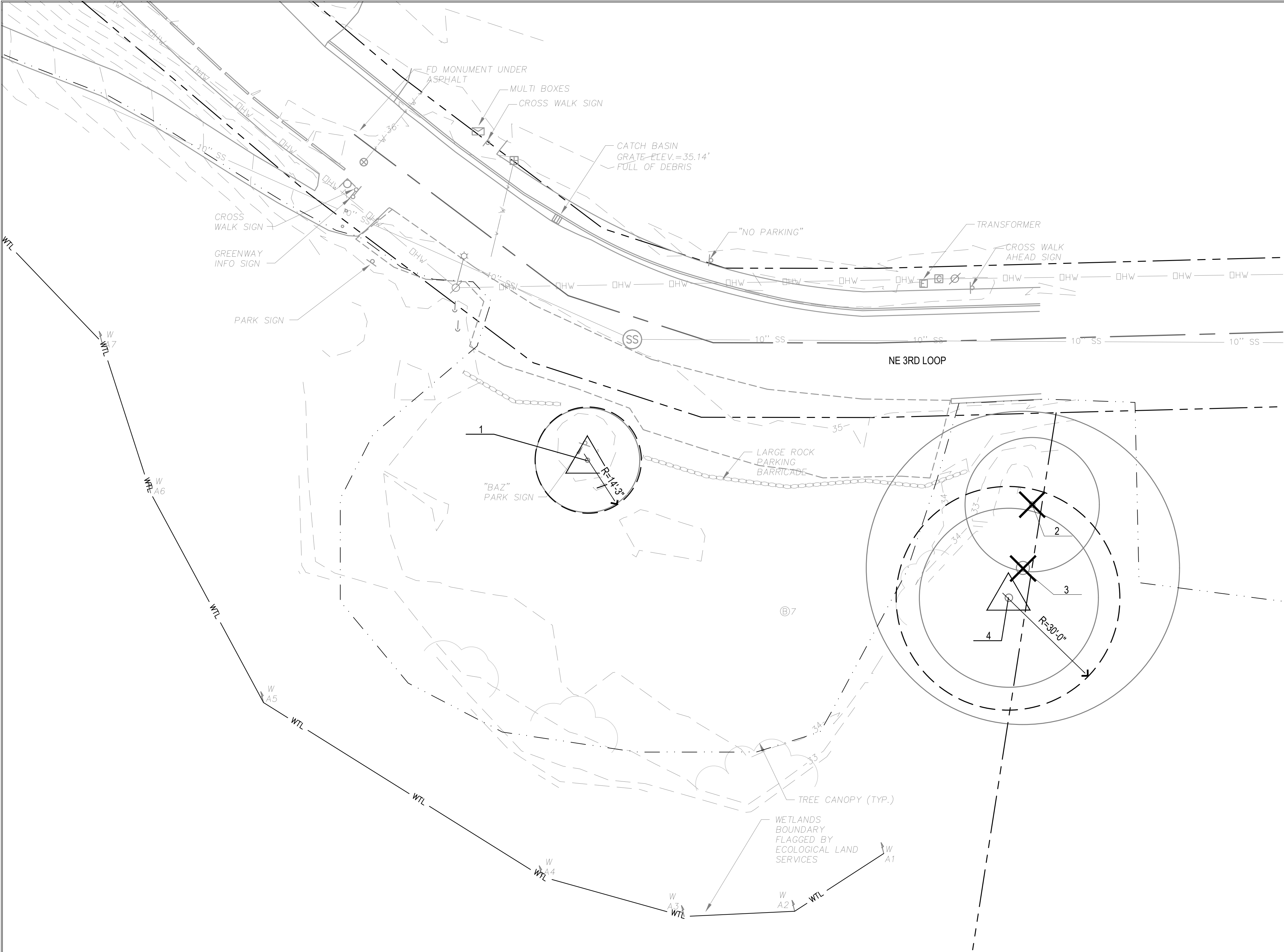
City of Camas WASHINGTON

CITY PROJECT NO. S1000

DRAWING NO:

T-102

2 OF 4

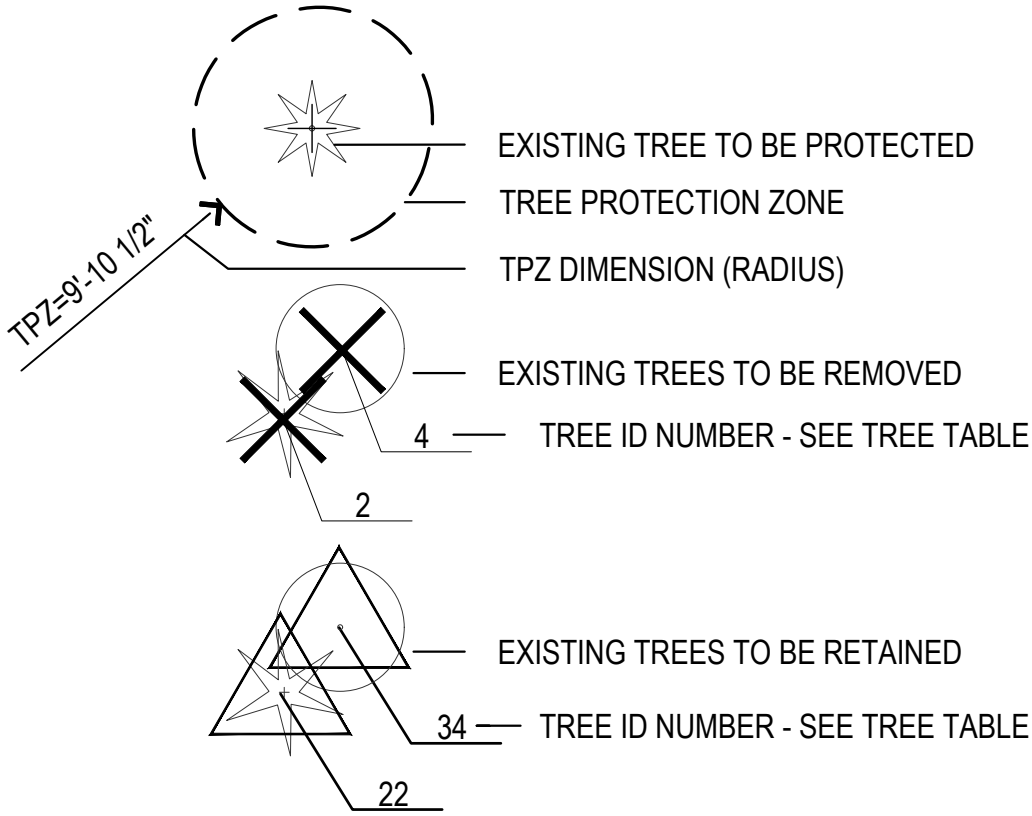


GreenWorks
GreenWorks, P.C.
Landscape Architecture
Environmental Design
24 NW 2nd Avenue, Suite 100
Portland, Oregon 97209
Ph:503.222.5612/F:503.222.2283
Email: info@greenworkspc.com

GREENWORKS PROJECT NO:
118060.2

TREE PLAN AND ASSESSMENT BY
BHRONWHYN J. DEAN, ISA CERTIFIED
ARBORIST #PN-6396A AND TRAQ #1571

TREE LEGEND



- NOTES:**
- ASSESSMENT ONLY INCLUDES 'SIGNIFICANT' TREES' WHICH HAVE TREE PROTECTION ZONES THAT MAY BE IMPACTED BY CONSTRUCTION, INCLUDING CANOPIES OF TREES LOCATED ON ADJACENT PROPERTY. PER CAMAS DEVELOPMENT CODE 18.03.050, 'SIGNIFICANT TREES' ARE DEFINED AS 12" OR GREATER DBH DECIDUOUS TREES AND 8" OR GREATER DBH CONIFEROUS TREES.
 - HAZARD RATING IS COMBINATION OF NUMERICAL SCORE EVALUATING PROBABILITY OF FAILURE (1-5 POINTS), SIZE OF DEFECTIVE PART (1-3 POINTS) AND TARGET AREA (1-4 POINTS).

ZERO RISK	0-2 POINTS
LOW RISK	3-5 POINTS
MODERATE RISK	6-8 POINTS
HIGH RISK	9-11 POINTS
EXTREME RISK	12 POINTS
 - DIAMETER BREAST HEIGHT (DBH) MEASURED AT 4.5' HT. FROM GROUND UNLESS OTHER WISE NOTED; EXPRESSED IN CALIPER-INCHES IN TABLE. DBH OF MULTI-STEM TREES CALCULATED BY ADDING DIAMETER OF LARGEST STEM TO ONE-HALF THE DIAMETER OF EACH ADDITIONAL STEM. MULTI-STEM TREES HAVE STEMS CONNECTED ABOVE GROUND. TRUNKS NOT CONNECTED ABOVE GROUND ARE NOT CONSIDERED MULTI-STEM; INDIVIDUAL STEM DBH'S ARE NOTED IN TABLE.
 - TREE PROTECTION ZONE DISTANCE FROM TRUNK CALCULATED BY MULTIPLIER BASED ON CONSTRUCTION TOLERANCE OF OF SPECIES AND TREE AGE TIMES DBH.
 - WITHIN THE TREE PROTECTION ZONES, THERE SHALL BE NO TEMPORARY OR PERMANENT STORAGE OR STAGING OF MATERIALS, SOIL, OR EQUIPMENT AND NO DUMPING OF REFUSE.

TABLE OF TREES									
TREE NUMBER	CONIFER OR DECID.	COMMON NAME	BOTANICAL NAME	SIZE (DBH)	CONDITION (STRUCTURAL STABILITY)	COMMENTS	HAZARD (RATING)	RECOMMENDATION	
1	C	ARBORVITAE	THUJA OCCIDENTALIS	3 STEM: 4.5", 6" AT 2.5' AND 9" AT GRND	GOOD			RETAIN	
2	D	BLACK COTTONWOOD	POPULUS TRICHOCARPA	23"	POOR	HEAVY IVY INFESTATION UP ENTIRE STEM. TOP MISSING AT 30'. BARK SEPARATING FROM SAPWOOD ON WEST SIDE OF STEM FROM GROUND LEVEL UP TO 6', EXPOSING PARTIALLY HEALED AREA OF DECAY THAT ENCOMPASSES ALMOST ONE-HALF OF STEM'S CIRCUMFERENCE.SOME CALLUS WOOD FORMED AT EDGES OF DECAY. DEAD BRANCHES WITH MISSING BARK IN CROWN. TREE IS LEANING 9-10° TO NORTHEAST BUT IS SHORT ENOUGH THAT IT WOULD NOT IMPACT THE NEARBY RESIDENCE IN THE EVENT OF TOTAL FAILURE. LEAN OF THIS TREE (AND #3 AND #4) APPEAR TO BE PHOTOTROPIC; THESE WERE PROBABLY ALL EDGE TREES BEFORE THE ADJACENT BAZ PARK WAS CREATED.	YES (11)	REMOVE	
3	D	BLACK COTTONWOOD	POPULUS TRICHOCARPA	40"	POOR/FAIR	DYING 12" STEM ON NORTH WITH MISSING BARK FROM GROUND LEVEL UP TO 2/3 OF TOTAL HEIGHT, CONKS, MISSING LEADER, AND BIRD NESTING CAVITIES. LEANING TO NE; COMPLETE FAILURE COULD IMPACT DECK OF ADJACENT RESIDENCE DEPENDING ON DIRECTION OF FAILURE. SOUTH STEM (36") HAS HAD MULTIPLE BRANCHES FAIL PREVIOUSLY, HAS BARK LIFTING FROM SAPWOOD AT BASE UP TO ABOUT 7' HT., AND CONSTRUCTION DEBRIS (CONCRETE CHUNKS) PILED AROUND BASE. HEAVY IVY AND BLACKBERRY COVER MAKES INSPECTION OF ROOTS IMPOSSIBLE; IT APPEARS FILL HAS BEEN PLACED OVER ORIGINAL GRADE. THERE IS ONE VISIBLE LARGE ROOT ON EAST SIDE OF TREE THAT HAS BEEN REPEATEDLY DAMAGED.	YES (11 - NORTH STEM, 10 - SOUTH STEM)	REMOVE	
4	D	BLACK COTTONWOOD	POPULUS TRICHOCARPA	24"	FAIR	MISSING ORIGINAL LEADER, ONE-SIDED CROWN DUE TO #3, SELF-CORRECTED LEAN TO SOUTHEAST. VERY HEAVY IVY AND BLACKBERRY COVER SO ROOTS CANNOT BE VISUALLY EXAMINED. LARGE DEAD BRANCH ON NORTH SIDE AT ABOUT 30'.		RETAIN; CROWN CLEAN, REMOVE LARGE DEAD LIMB.	

DATE

BY

REVISION

NO.

DESIGNED BY: BJD

DRAWN BY: BJD

REV:

BAZ PARK TREE PLAN

wallis engineering

215 W 4th Street, Suite 200
Portland, OR 97204
503.695.7244

DATE: 4/2019

PROJECT NO: 1460A

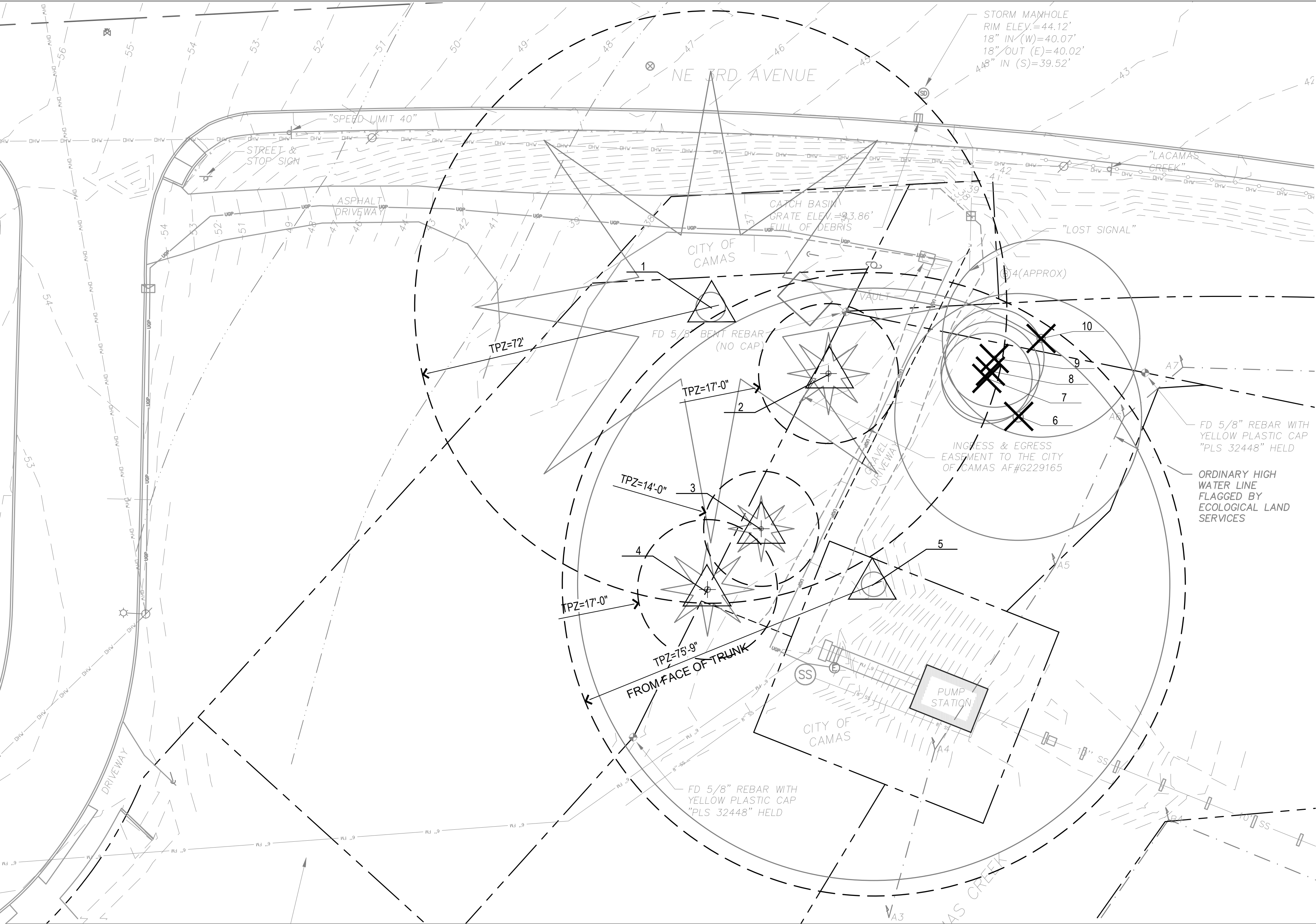
LACAMAS CREEK
SANITARY SEWER
PUMP STATION
IMPROVEMENTS

City of Camas WASHINGTON

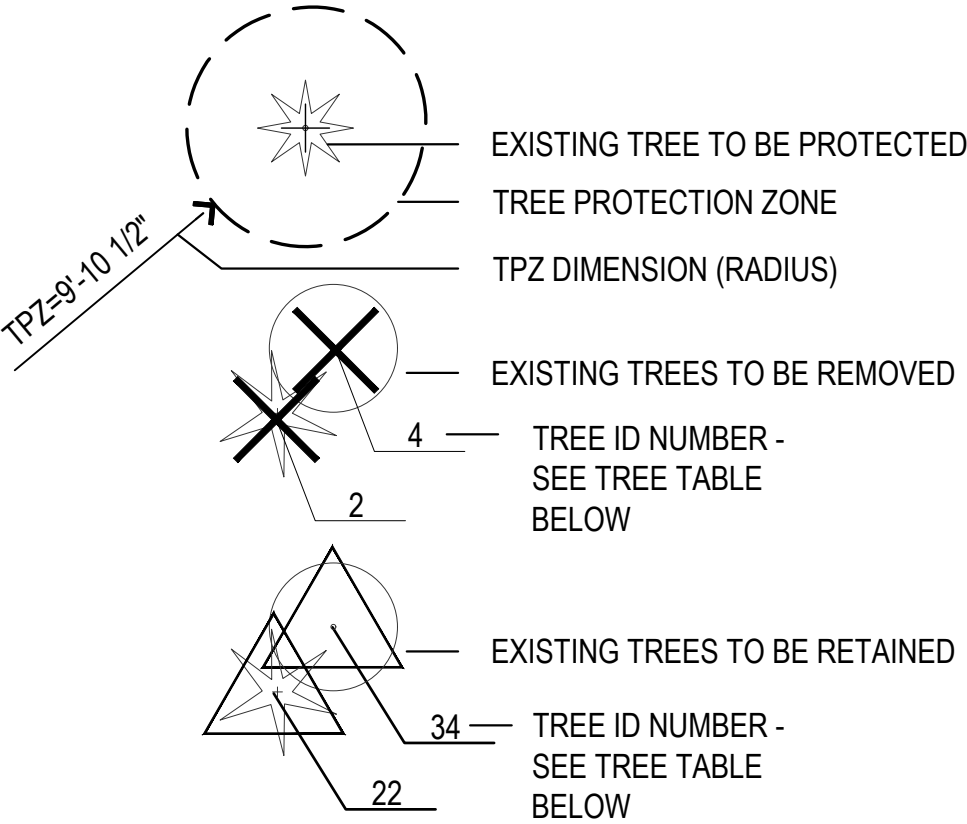
CITY PROJECT NO. S1000

DRAWING NO:
T-103

3 OF 4



TREE LEGEND



- NOTES:
- ASSESSMENT ONLY INCLUDES 'SIGNIFICANT' TREES' WHICH HAVE TREE PROTECTION ZONES THAT MAY BE IMPACTED BY CONSTRUCTION, INCLUDING CANOPIES OF TREES LOCATED ON ADJACENT PROPERTY. PER CAMAS DEVELOPMENT CODE 18.03.050, 'SIGNIFICANT TREES' ARE DEFINED AS 12" OR GREATER DBH DECIDUOUS TREES AND 8" OR GREATER DBH CONIFEROUS TREES.
 - HAZARD RATING IS COMBINATION OF NUMERICAL SCORE EVALUATING PROBABILITY OF FAILURE (1-5 POINTS), SIZE OF DEFECTIVE PART (1-3 POINTS) AND TARGET AREA (1-4 POINTS).

Risk Level	Points
ZERO RISK	0-2 POINTS
LOW RISK	3-5 POINTS
MODERATE RISK	6-8 POINTS
HIGH RISK	9-11 POINTS
EXTREME RISK	12 POINTS
 - DIAMETER BREAST HEIGHT (DBH) MEASURED AT 4.5' HT. FROM GROUND UNLESS OTHER WISE NOTED; EXPRESSED IN CALIPER-INCHES IN TABLE. DBH OF MULTI-STEM TREES CALCULATED BY ADDING DIAMETER OF LARGEST STEM TO ONE-HALF THE DIAMETER OF EACH ADDITIONAL STEM.
 - TREE PROTECTION ZONE DISTANCE FROM TRUNK CALCULATED BY MULTIPLIER BASED ON CONSTRUCTION TOLERANCE OF OF SPECIES AND TREE AGE TIMES DBH.
 - WITHIN THE TREE PROTECTION ZONES, THERE SHALL BE NO TEMPORARY OR PERMANENT STORAGE OR STAGING OF MATERIALS, SOIL, OR EQUIPMENT AND NO DUMPING OF REFUSE.

TABLE OF TREES								
TREE NUMBER	CONIFER OR DECID.	COMMON NAME	BOTANICAL NAME	SIZE (DBH CAL-INCHES)	CONDITION (STRUCTURAL STABILITY)	COMMENTS	HAZARD (RATING)	RECOMMENDATION
1	C	GIANT SEQUOIA	SEQUOIAENDRON GIGANTEUM	95	GOOD			RETAIN. DO NOT SEVER ROOTS OVER 3'Ø; ANY ROOTS THAT ARE PRUNED SHOULD LEAVE FLAT SURFACE WITH CLEAN EDGES; DO NOT TEAR ROOTS. EXPOSED ROOTS SHALL NOT BE LEFT UNCOVERED AND ALLOWED TO DRY OUT.
2	C	SHORE PINE	PINUS CONTORTA	17	FAIR	LOW LIVE CROWN RATIO. SOME RESINOSUS AT BASE		RETAIN
3	C	DOUG FIR	PSEUDOTSUGA MENZIESII	14	FAIR	SHADED OUT BY #6; THINNING FOLIAGE WITH APPARENT NEEDLE RUST INFECTION.		RETAIN
4	C	LOW'S FIR	ABIES CONCOLOR V. LOWIANA	17	FAIR	FINE DEAD TWIGS IN CROWN. UNHEALED WOUND AT BASE.		RETAIN
5	D	OREGON OAK	QUERCUS GARRYANA	91 AT 1' HT.	GOOD	MASSIVE TREE WITH 7 STEMS DIVIDING AT 1' ABOVE GRADE. AT TOP OF SLOPE. CAVITY WITH CALLUS EDGES AT BASE OF NORTH STEM. UNHEALED BARK WOUND AT BASE ON SOUTHWEST SIDE. NEW SEWER LINE PROPOSED WITHIN LESS THAN 10' OF FACE OF TRUNK. TRENCHING WILL CUT UPHILL ROOTS.		RETAIN. RECOMMEND RELOCATING NEW SEWER LINE OUTSIDE THE TREE PROTECTION ZONE. WHERE SEWER LINE PASSES WITHIN A 40' RADIUS OF THE TRUNK FACE, RECOMMEND INSTALLATION OF NEW LINE BY BORING OR TUNNELING AT A MIN. DEPTH OF 3'. WITHIN THE TPZ, TRENCHING SHALL OCCUR UNDER THE SUPERVISION OF AN ARBORIST TO ENSURE TREE STABILITY IS NOT COMPROMISED. WHERE CONSTRUCTION ACTIVITY SHALL OCCUR WITHIN THE TPZ, PROVIDE 6"-16" DEPTH WOOD CHIPS OVER GEOTEXTILE TO MINIMIZE SOIL COMPACTION; LEAVE IN PLACE UNTIL COMPLETION OF CONSTRUCTION. DO NOT SEVER ROOTS OVER 3'Ø; ROOTS SHALL NOT BE TORN OR CRUSHED; PRUNED ROOTS SHALL BE LEFT WITH FLAT SURFACE WITH ADJACENT BARK FIRMLY ATTACHED. EXPOSED ROOTS SHALL NOT BE LEFT UNCOVERED AND ALLOWED TO DRY OUT. TRENCH BACKFILL SHALL BE NATIVE SOIL WHEN POSSIBLE. IF ROCK BACKFILL IS USED, EXPOSED ROOTS SHALL BE WRAPPED IN GEOTEXTILE PRIOR TO BACKFILLING. RECOMMEND PROTECTING TRUNK OF TREE FROM MECHANICAL INJURY DURING CONSTRUCTION TO A MIN. HT. OF 8'. TREE TO BE MONITORED ANNUALLY FOR SIGNS OF DECLINE.
6	D	BIGLEAF MAPLE	ACER MACROPHYLLUM	38	DEAD/DYING	COMPLETELY GIRDLED BY BEAVER. TOP GONE.	YES (8)	REMOVE
7	D	CHERRY	PRUNUS SPP.	13	FAIR	TREE AT TOP OF SLOPE IN GROUP OF 3 WITH #8 AND #9. SELF-CORRECTED LEAN TO SW. PROPOSED TRENCH WILL CUT UPHILL ROOTS.		REMOVE. SINCE THIS TREE IS IN CLOSE PROXIMITY TO #8 AND #9 AND IS NOT A VALUABLE OR UNUSUAL TREE, RECOMMEND REMOVAL. EXPECT THAT ROOTS OF ALL THREE TREES ARE INTERTWINED, SO REMOVING #8 AND #9 MAY COMPROMISE ROOT STABILITY OF THIS TREE AND INCREASE CHANCE OF WINDTHROW FAILURE.
8	D	COTTONWOOD	POPULUS TRICHOCARPA	14	POOR	GIRDLED BY BEAVER, ONLY 1/3 OF STEM REMAINING. PROPOSED TRENCH WILL CUT UPHILL ROOTS.	YES (9)	REMOVE. DO NOT EXCAVATE ROOT WAD IF #7 TO BE RETAINED.
9	D	CHERRY	PRUNUS SPP.	16	POOR	15° LEAN OVER GRAVEL DRIVE. LARGE STEM BULGE. PROPOSED TRENCH WILL CUT UPHILL ROOTS.	YES (7)	REMOVE. DO NOT EXCAVATE ROOT WAD IF #7 TO BE RETAINED.
10	D	COTTONWOOD	POPULUS TRICHOCARPA	27	POOR	BEAVER-GIRDLED FOR THREE-QUARTERS OF CIRCUMFERENCE. CONKS ON EXPOSED SAPWOOD. PROPOSED TRENCH WILL MOST LIKELY CUT ANCHORING UPHILL ROOTS.	YES (9)	REMOVE

GREENWORKS

GreenWorks, P.C.
Landscape Architecture
Environmental Design
24 NW 2nd Avenue, Suite 100
Portland, Oregon 97209
Ph:503.222.5612/F:503.222.2283
Email: info@greenworkspc.com

GREENWORKS PROJECT NO:
118060.2

TREE PLAN AND ASSESSMENT BY
BHRONWHYN J. DEAN, ISA CERTIFIED
ARBORIST #PN-6396A AND TRAQ #1571

DATE

BY

REVISION

NO.

DESIGNED BY: BJD

DRAWN BY: BJD

ONE INCH AT FULL SCALE

IF NOT ONE INCH ADJUST SCALE ACCORDINGLY

LACAMAS CREEK
SEWER LINE
TREE PLAN

wallis engineering
215 W 4th Street, Suite 200
Portland, OR 97204
503.695.7244

DATE: 4/2019
PROJECT NO: 1460A

LACAMAS CREEK
SANITARY SEWER
PUMP STATION
IMPROVEMENTS

City of Camas
WASHINGTON

CITY PROJECT NO. S1000

DRAWING NO:
T-104
4 OF 4