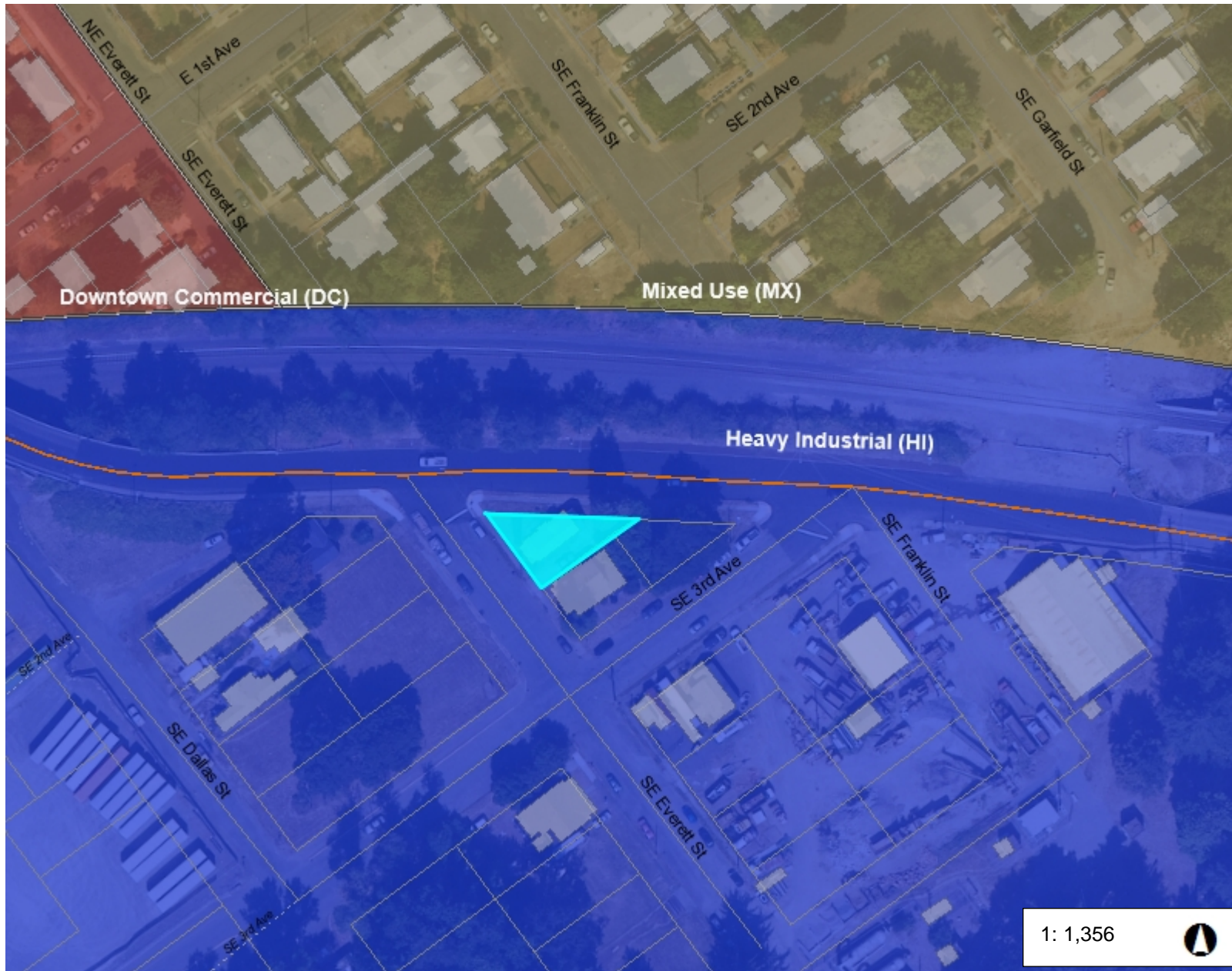
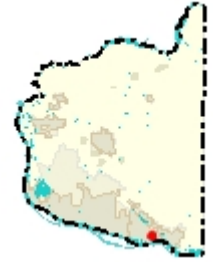




# Three Rivers Development



## Legend

### Highway

- Interstate
- State Route
- Interstate Ramp
- State Ramp

### Arterial

- Arterial
- Forest Arterial

### Collector

- Minor
- Forest

### Other

- Private, Other
- Proposed
- Unknown

Building Footprints

Taxlots

### Zoning Overlay

- Urban Reserve - 10 (UR-10)
- Urban Reserve - 20 (UR-20)
- Urban Holding - 10 (UH-10)
- Urban Holding - 20 (UH-20)
- Railroad Industrial Urban Reserve
- Freight Rail Dependent Use

## Notes:

220 SE Everett St  
Parcel No. 89530000

225.9 0 112.97 225.9 Feet

WGS\_1984\_Web\_Mercator\_Auxiliary\_Sphere  
Clark County, WA. GIS - <http://gis.clark.wa.gov>

This map was generated by Clark County's "MapsOnline" website. Clark County does not warrant the accuracy, reliability or timeliness of any information on this map, and shall not be held liable for losses caused by using this information.