

STORM SEWER:

- 1) STORMWATER QUALITY AND QUANTITY CONTROL TO BE ACHIEVED USING A "LARGE" WETPOND WITH DETENTION ABOVE THE WETPOOL. STORMWATER FROM THE DEVELOPMENT TO BE DISCHARGED VIA OUTFALLS TO THE EXISTING DITCH SOUTH OF NE INGLE ROAD. ULTIMATELY STORMWATER FROM THE DEVELOPMENT IS CONVEYED TO EXISTING WETLANDS LOCATED TO THE SOUTH AND WEST OF NE INGLE ROAD.
- 2) THE WETPOND HAS BEEN DESIGNED AS A "LARGE" WETPOND TO MEET THE PHOSPHORUS CONTROL REQUIREMENTS FOR THE LACAMAS WATER SHED, AS SPECIFIED BY THE CITY OF CAMAS AND THE WASHINGTON STATE DEPARTMENT OF ECOLOGY.
- 3) THE PROPOSED STORMWATER FACILITIES WILL BE PRIVATELY OWNED AND MAINTAINED, WITH ACCESS AND INSPECTION EASEMENTS TO BE DEDICATED TO THE CITY OF CAMAS AS REQUIRED.
- 4) A BYPASS STORM MAIN IS TO BE INSTALLED IN NE INGLE ROAD TO CONVEY ALL OFFSITE STORMWATER RUNOFF TO THE OUTFALL LOCATION.
- 5) OFFSITE STORMWATER RUNOFF FROM HILLSIDES ABOVE THE DEVELOPMENT TO BE INTERCEPTED BY FRENCH DRAIN / AREA DRAINS AND ROUTED TO THE BYPASS MAIN IN NE INGLE ROAD TO CONVEY RUNOFF TO OUTFALL LOCATION OR DISCHARGED VIA FLOW SPREADERS DIRECTLY TO EXISTING WETLAND "B" AT SOUTH END OF THE SITE.

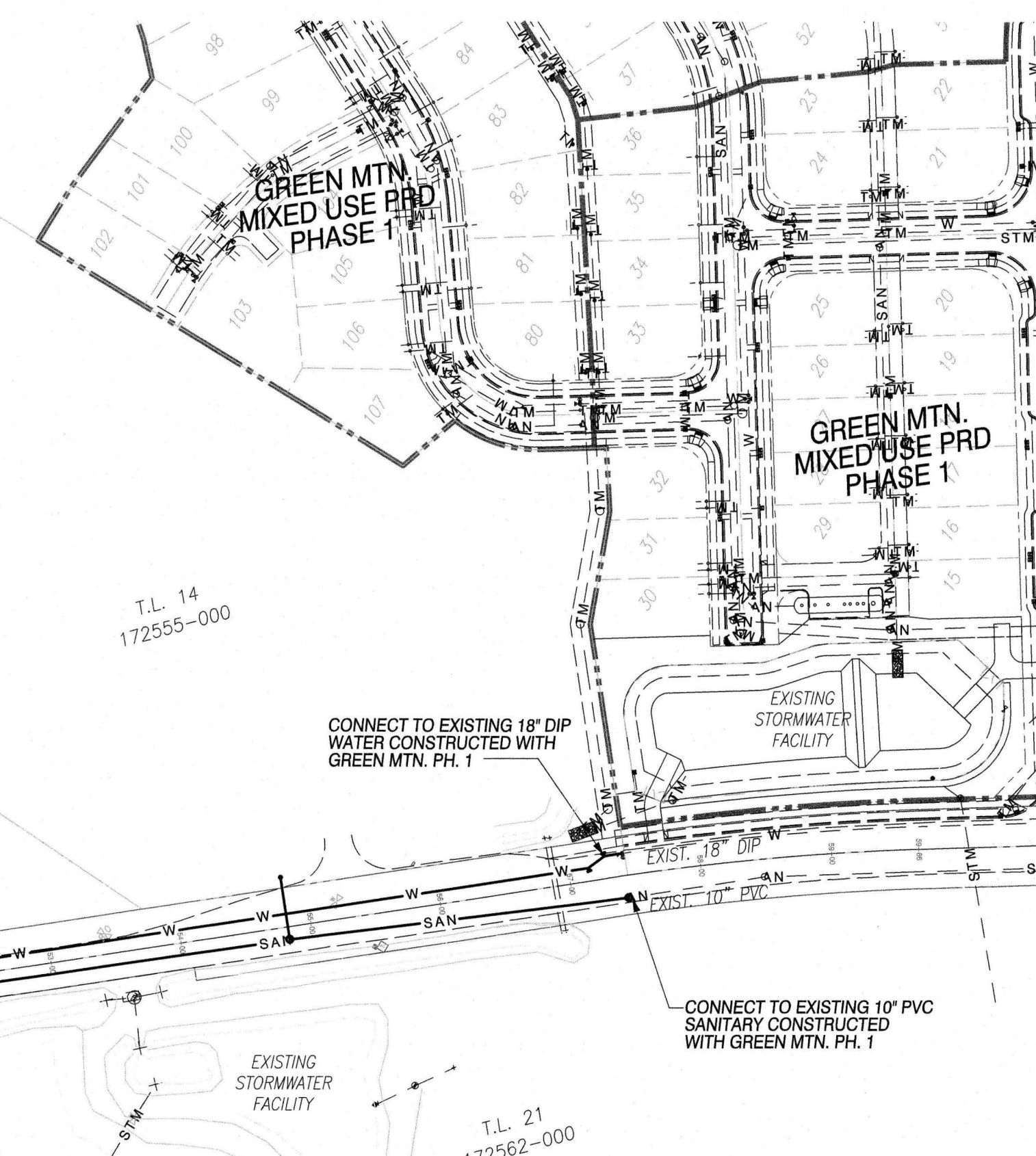
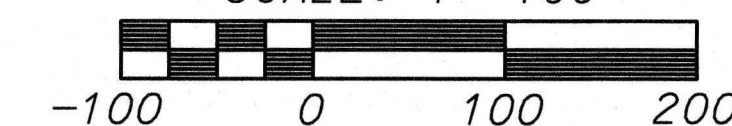
SANITARY:

- 1) **SANITARY SEWER SERVICE WILL BE PROVIDED BY CITY OF CAMAS.**
- 2) **THE SANITARY SEWER WILL BE A GRAVITY SYSTEM. THE EXISTING 10" PVC MAIN LOCATED IN NE INGLE ROAD THAT WAS CONSTRUCTED WITH GREEN MTN. PHASE 1 WILL BE EXTENDED ALONG THE SITE FRONTAGE TO THE NW CORNER OF THE PHASE 2 SITE. A NEW 8" PVC MAIN WILL BE EXTENDED INTO THE SITE WITH 6" LATERALS TO PROVIDE SERVICE TO EACH LOT.**
- 3) **SANITARY SEWER EASEMENTS WILL BE DEDICATED TO CITY OF CAMAS AS REQUIRED.**

WATER:

- 1) WATER SERVICE WILL BE PROVIDED BY CITY OF CAMAS.
- 2) THE EXISTING 18" DIAM MAIN LOCATED IN NE INGLE ROAD THAT WAS CONSTRUCTED WITH STEEL HORN PHASE 1 WILL BE EXTENDED ALONG THE SITE FRONTAGE TO THE NW CORNER OF THE PHASE 2 SITE. NEW 8" DIAM WATER MAINS WILL BE LAYED THROUGH THE SITE WITH WATER SERVICES AND FIRE HYDRANTS TO PROVIDE WATER AND FIRE SERVICE TO THE PROPOSED DEVELOPMENT.
- 3) A WATER SYSTEM BOOSTER STATION (DE-5) IS TO BE CONSTRUCTED WITH PHASE 3 FOR LOTS ABOVE AN ELEVATION OF 370'. AS REQUIRED IN THE CITY OF CAMAS ENGINEERING CONDITIONS OF APPROVAL, A FINANCIAL LOCATION STUDY HAS BEEN SHOWN ON PLAN SHEET 1 BUT MAY BE SUBJECT TO CHANGE AT TIME OF FINAL DESIGN.
- 4) FIRE HYDRANTS WILL BE LOCATED AS SHOWN, OR AS DIRECTED BY THE FIRE MARSHAL.
- 5) WATER EASEMENTS WILL BE DEDICATED TO CITY OF CAMAS AS REQUIRED.
- 6) THERE IS AN EXISTING CLARK PUBLIC UTILITIES WELL AND ASSOCIATED EASEMENT LOCATED WITHIN THE SITE THAT SERVES THE MOUNTAIN GLEN SUBDIVISION LOCATED TO THE NORTH. THIS WELL IS TO BE ABANDONED AND THE EASEMENT VACATED AS PART OF THIS DEVELOPMENT. THE MOUNTAIN GLEN SUBDIVISION WATER MAIN IS TO BE EXTENDED TO THE PROPOSED GREEN MTN. PRO PHASE 3 WATER SYSTEM IN ORDER TO PROVIDE WATER AND FIRE SERVICE TO THE EXISTING SUBDIVISION.

SCALE: 1"=100'



10/10/11

CHANGES / REVISIONS	
DESCRIPTION:	DATE:

DESIGNED: RWP

DRAWN: RWP

CHECKED: PAT

DATE: OCTOBER 2017

SCALE: H: 1"=100'
V:

COPYRIGHT 2017, OLSON ENGINEERING, INC

GREEN MOUNTAIN MIXED USE P.R.D.
PHASE 3

JOB NO.: 8938.01.02

SHEET

2 OF 5

J:\data\8000\8900\8930\8938\Engineering\Prelim\Phase 3\Sheets\8938.e.Border2.Prelim.Ph3 Utility South.dgn
M:\MicroStation V8\pen tables\OCE table setup\OCE street util.tbl