

CLIENT:
GREEN MOUNTAIN LAND LLC
17933 NW EVERGREEN PARKWAY
SUITE #300
BEAVERTON, OR 97006
ATTN: JOHN O'NEIL
PH: (503) 597-7100
EMAIL: johno@metlandgroup.com

PRELIMINARY GRADING NOTES

- 1) GRADING DESIGN AND CONSTRUCTION IS TO BE PER THE RECOMMENDATIONS IN THE GEOTECHNICAL REPORT BY COLUMBIA WEST DATED SEPTEMBER 28, 2017.
- 2) EROSION CONTROL BMP'S WILL BE DESIGNED DURING FINAL DESIGN PER THE CITY OF CAMAS DESIGN STANDARDS MANUAL.
- 3) PRE-DEVELOPED AND DEVELOPED CONTOURS ARE SHOWN AT 2' INTERVALS ON THE PRELIMINARY GRADING PLANS.

PRELIMINARY GRADING PLAN (SOUTH) FOR:
GREEN MOUNTAIN MIXED USE P.R.D.
PHASE 3

OLSON LAND SURVEYORS
ENGINEERS
ENGINEERING INC. 222 E. EVERGREEN, VANCOUVER, WA 98660
907.885.1505
202.289.6926



CHANGES / REVISIONS

| DESCRIPTION: | DATE: |
|--------------|-------|
| | |
| | |
| | |
| | |
| | |
| | |
| | |
| | |
| | |
| | |
| | |

DESIGNED: RWP

DRAWN: RWP

CHECKED: PAT

DATE: OCTOBER 2017

SCALE: H: 1"=100'
V:

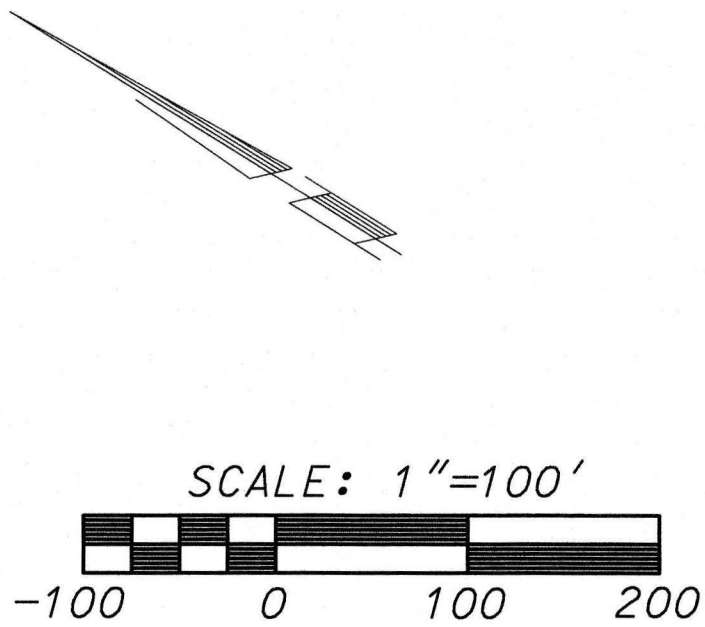
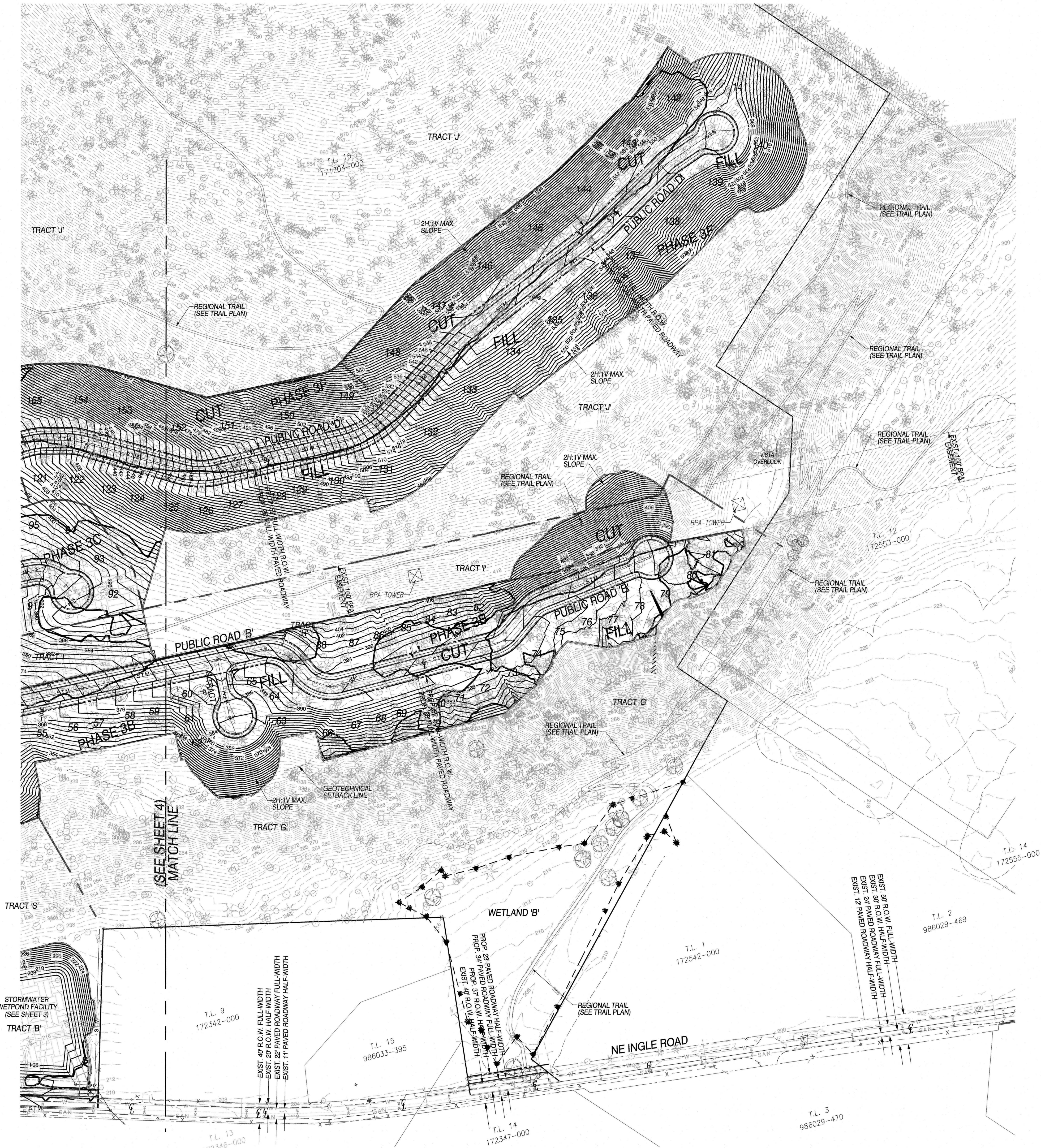
COPYRIGHT 2017, OLSON ENGINEERING, INC.

GREEN MOUNTAIN MIXED USE P.R.D.
PHASE 3

JOB NO.: 8938.01.02

SHEET

5 OF 5



GREEN MOUNTAIN PHASE 3 TREE PRESERVATION EXHIBIT



POD E - TOTAL TREES LISTED IN THE DA = 4,040
TREES REMAINING AFTER DEVELOPMENT = 2,422
PERCENTAGE OF TREES PRESERVED REQUIRED IN DA = 39%
PERCENTAGE OF TREES PRESERVED AFTER DEVELOPMENT = 60%



POD D - TOTAL TREES LISTED IN THE DA = 3,524
TREES REMAINING AFTER DEVELOPMENT = 2,796
PERCENTAGE OF TREES PRESERVED REQUIRED IN DA = 67%
PERCENTAGE OF TREES PRESERVED AFTER DEVELOPMENT = 79%

OLSON LAND SURVEYORS
ENGINEERS
ENGINEERING INC. 202 E. EVERGREEN BLVD., VANCOUVER, WA 98660
360.450.1344
360.450.9080

