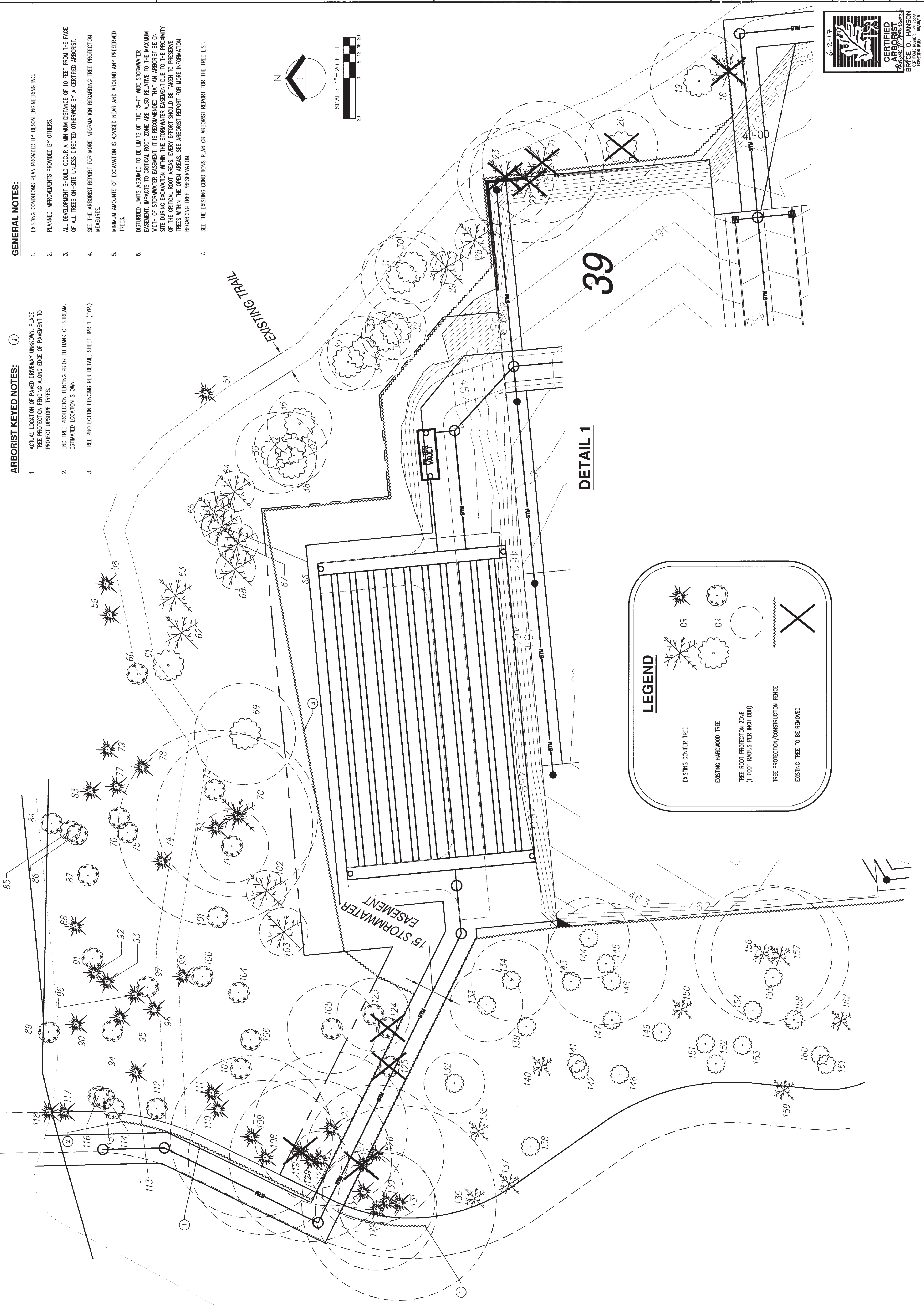


GENERAL NOTES:

- EXISTING CONDITIONS PLAN PROVIDED BY OLSON ENGINEERING INC.
- PLANNED IMPROVEMENTS PROVIDED BY OTHERS.
- ALL DEVELOPMENT SHOULD OCCUR A MINIMUM DISTANCE OF 10 FEET FROM THE FACE OF ALL TREES ON-SITE UNLESS DIRECTED OTHERWISE BY A CERTIFIED ARBORIST.
- SEE THE ARBORIST REPORT FOR MORE INFORMATION REGARDING TREE PROTECTION MEASURES.
- MINIMUM AMOUNTS OF EXCAVATION IS ADVISED NEAR AND AROUND ANY PRESERVED TREES.
- DISTURBED LIMITS ASSIGNED TO BE LIMITS OF THE 15-FT WIDE STORMWATER EASEMENT. IMPACTS TO CRITICAL ROOT ZONE ARE ALSO RELATIVE TO THE MAXIMUM WIDTH OF STORMWATER EASEMENT. IT IS RECOMMENDED THAT AN ARBORIST BE ON SITE DURING EXCAVATION WITHIN THE STORMWATER EASEMENT DUE TO THE PROXIMITY OF THE CRITICAL ROOT AREAS. EVERY EFFORT SHOULD BE TAKEN TO PRESERVE TREES WITHIN THE OPEN AREAS. SEE ARBORIST REPORT FOR MORE INFORMATION REGARDING TREE PRESERVATION.
- SEE THE EXISTING CONDITIONS PLAN OR ARBORIST REPORT FOR THE TREE LIST.

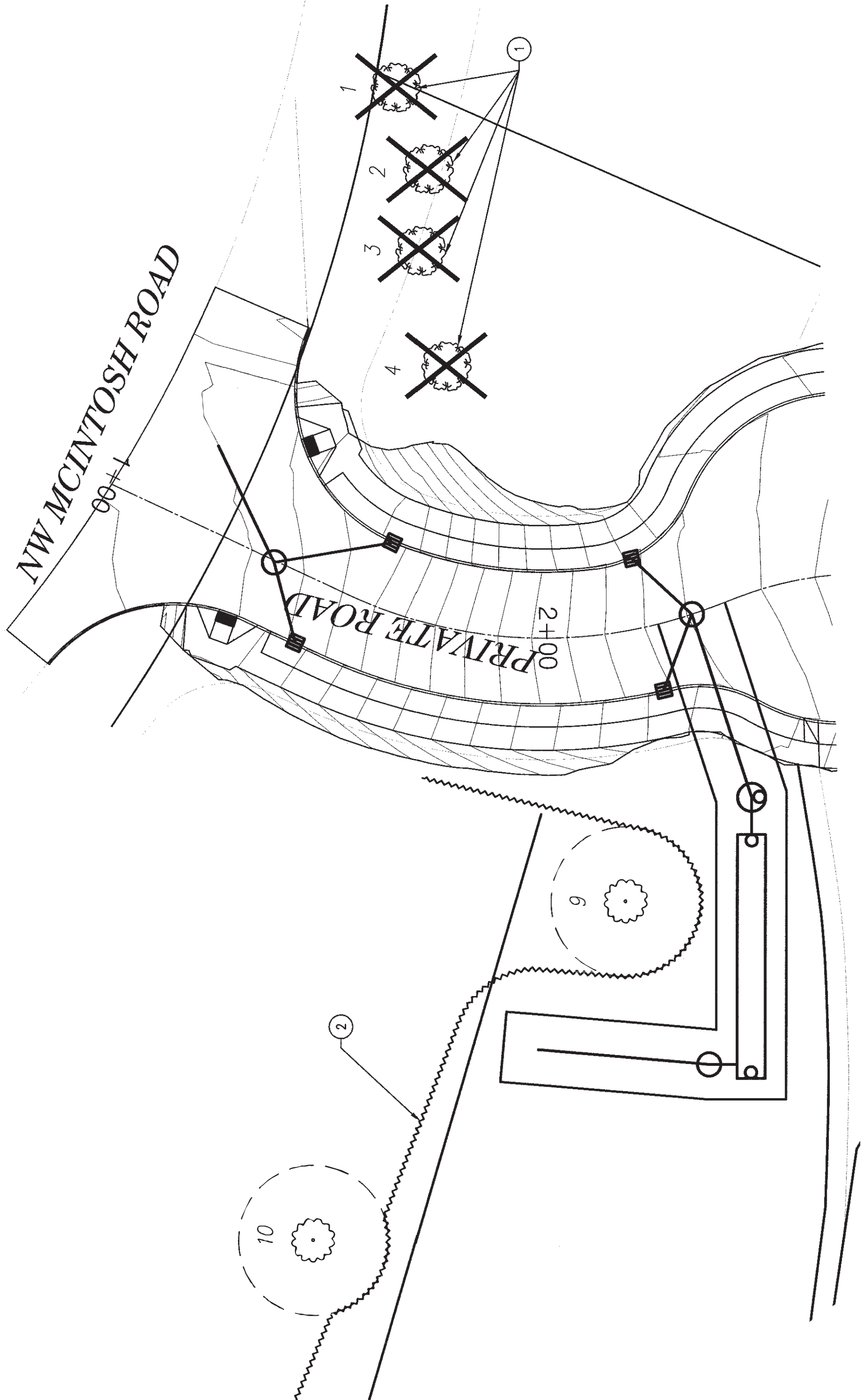
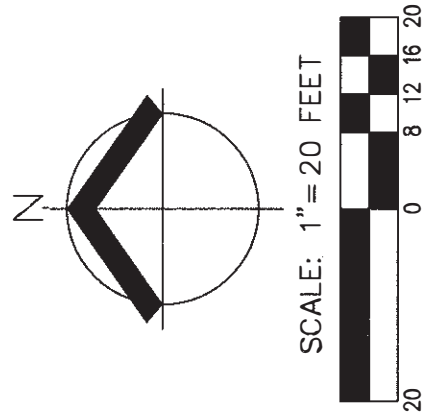
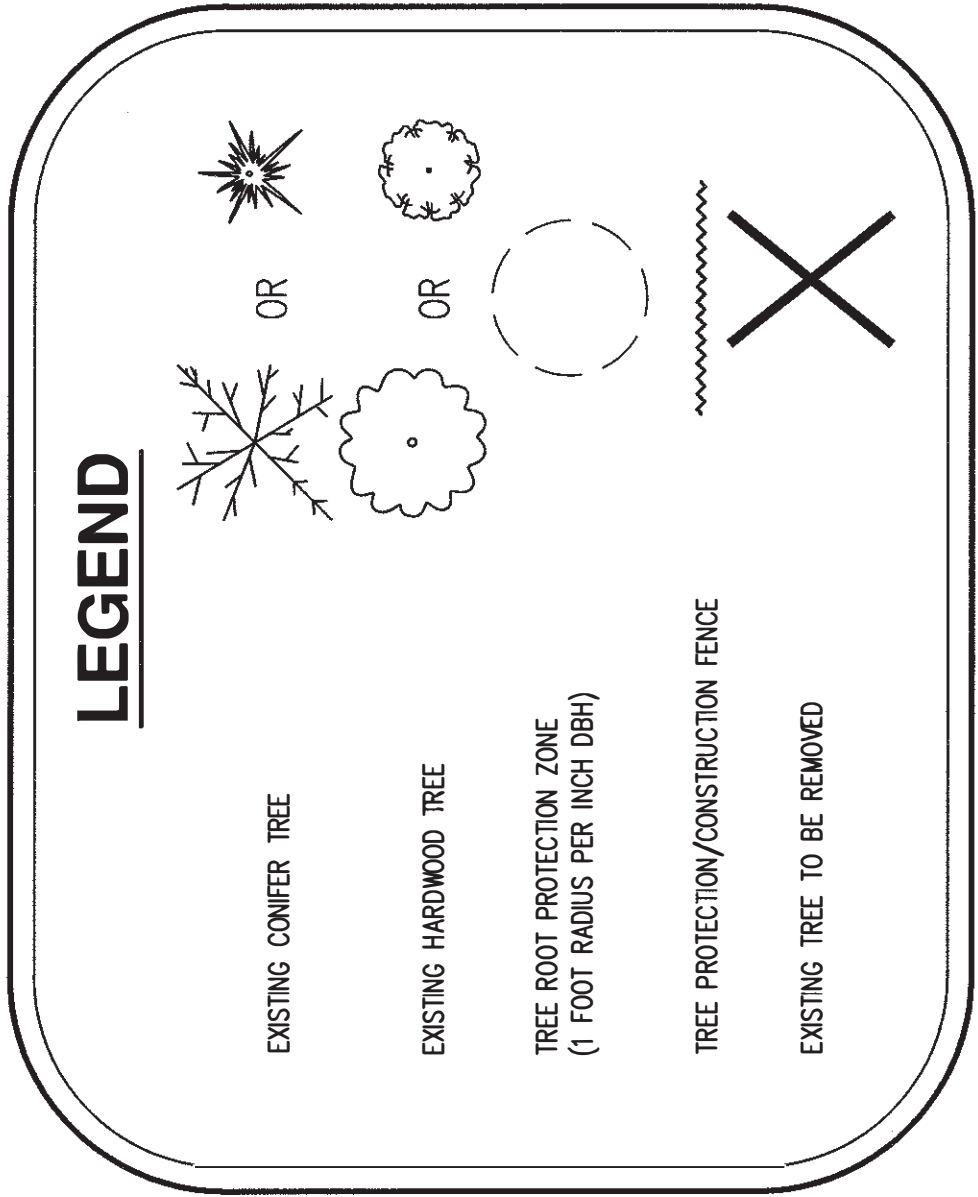
ARBORIST KEYED NOTES:

- ACTUAL LOCATION OF PAVED DRIVEWAY UNKNOWN. PLACE TREE PROTECTION FENCING ALONG EDGE OF PAVEMENT TO PROTECT UPSLOPE TREES.
- END TREE PROTECTION FENCING PRIOR TO BANK OF STREAM. ESTIMATED LOCATION SHOWN.
- TREE PROTECTION FENCING PER DETAIL, SHEET TPR 1. (TYP.)

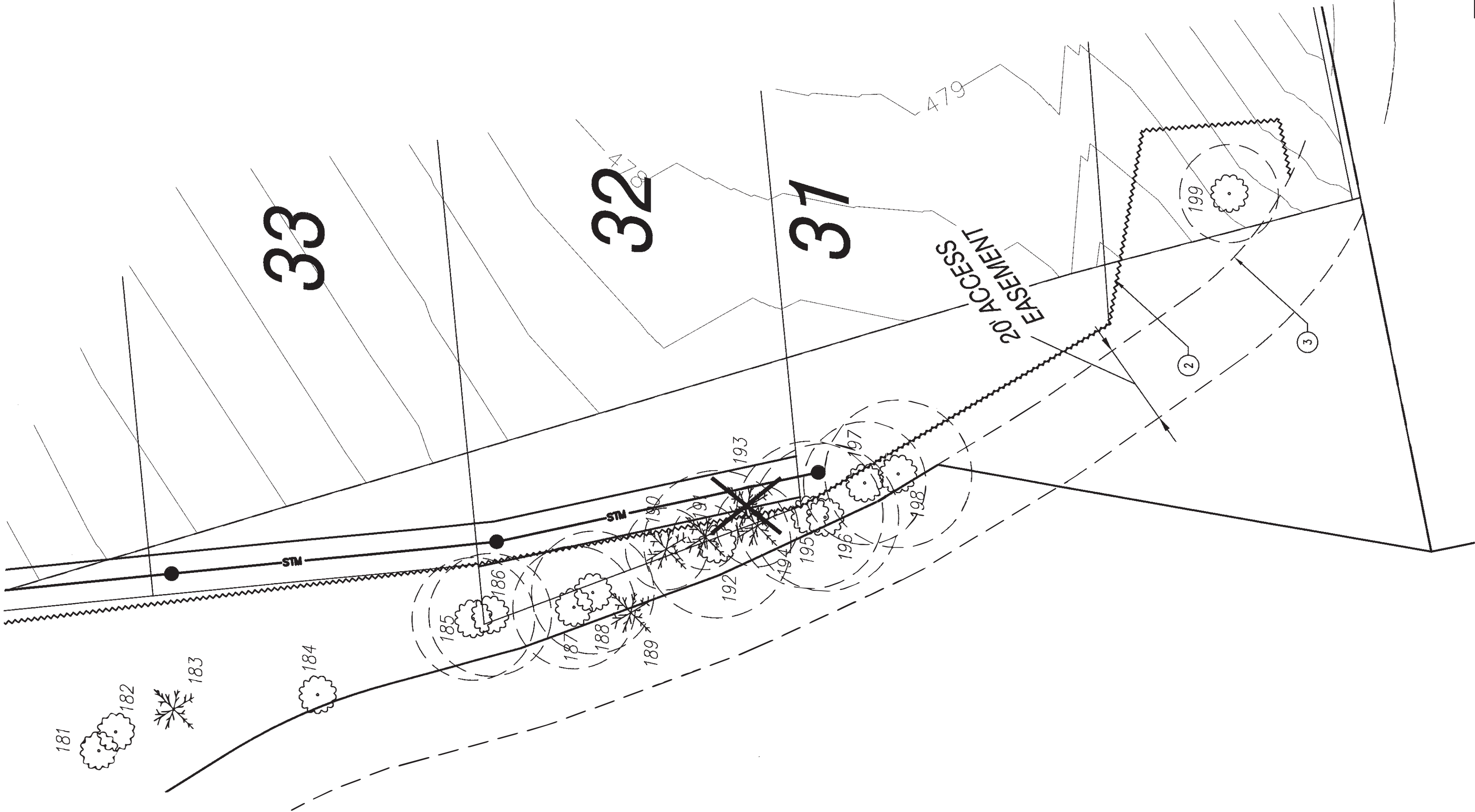


ARBORIST KEYED NOTES:

- TREE 1 TO BE REMOVED. TREES 2, 3, & 4 DETERMINED TO BE DEAD SINCE ORIGINAL SURVEY WAS COMPLETED.
 - TREE PROTECTION FENCING PER DETAIL SHEET TPR 1. (TYP.)
 - ACTUAL LOCATION OF PAVED DRIVEWAY UNKNOWN. ASSUMED NO EXCAVATION ALONG EDGE OF PAVEMENT WITHIN ACCESS EASEMENT WIDTH.
- GENERAL NOTES:**
- EXISTING CONDITIONS PLAN PROVIDED BY OLSON ENGINEERING INC.
 - PLANNED IMPROVEMENTS PROVIDED BY OTHERS.
 - ALL DEVELOPMENT SHOULD OCCUR A MINIMUM DISTANCE OF 10 FEET FROM THE FACE OF ALL TREES ON-SITE UNLESS DIRECTED OTHERWISE BY A CERTIFIED ARBORIST.
 - SEE THE ARBORIST REPORT FOR MORE INFORMATION REGARDING TREE PROTECTION MEASURES.
 - MINIMUM AMOUNTS OF EXCAVATION IS ADVISED NEAR AND AROUND ANY PRESERVED TREES.
 - DISTURBED LIMITS ASSUMED TO BE LIMITS OF THE STORMWATER EASEMENT WITHIN THE LOTS. IMPACTS TO CRITICAL ROOT ZONE ARE ALSO RELATIVE TO THE MAXIMUM WIDTH OF STORMWATER EASEMENT. IT IS RECOMMENDED THAT AN ARBORIST BE ON SITE DURING EXCAVATION WITHIN THE STORMWATER EASEMENT DUE TO THE PROXIMITY OF THE CRITICAL ROOT AREAS. EVERY EFFORT SHOULD BE TAKEN TO PRESERVE TREES WITHIN THE OPEN AREAS. SEE ARBORIST REPORT FOR MORE INFORMATION REGARDING TREE PRESERVATION.
 - SEE THE EXISTING CONDITIONS PLAN OR ARBORIST REPORT FOR THE TREE LIST.



DETAIL 2



DETAIL 3



TPR 3

SHEET

JOB NUMBER

5873

REVISIONS

DATE:

SCALE: AS NOTED

CHECKED BY: BDH

DESIGNED BY: CUS

DRAWN BY: CUS

DESIGNED BY: CUS

TREE PRESERVATION AND
REMOVAL PLAN

CAMAS

DAWSON'S RIDGE SUB

WASHINGTON

AKS ENGINEERING & FORESTRY, LLC
9600 NE 126TH AVE. STE. 2520
VANCOUVER, WA 98682
P: 360.882.0419
F: 360.882.0426
aks-eng.com

ENGINEERING · SURVEYING · LANDSCAPE ARCHITECTURE
FORESTRY · PLANNING

