

LANDSCAPE LEGEND

SYMBOL	COMMON NAME	SIZE/COND.	SPACING
TREES			
ER	Eastern Redbud 'Forest Pansy' Cercis canadensis 'Forest Pansy'	2" CAL.	As Shown
SHRUBS			
ID	Isanti Dogwood Cornus sericea 'Isanti'	24" 30"	4' O.C.
MEG	Maiden Eulalia Grass Miscanthus sinensis 'Gracillimus'	1 GAL.	4' O.C.
OG	Oregon Grape Mahonia aquifolium	3 GAL.	3' O.C.
RGB	Rose Glow Barberry Berberis thunbergii atropurpurea 'Rose Glow'	24" 30"	4' O.C.
SAR	Sarcococca Sarcococca ruscifolia	5 GAL.	4' O.C.
SF	Sword Fern Polystichum munitum	1 GAL.	3' O.C.
GROUND COVER			
	Bearberry Cotoneaster Cotoneaster dammeri	1 GAL.	30" O.C.
	Fine Seeded/Sod Lawn Oregon Ryegrass Blend		
BIORETENTION FACILITY			
	Common Rush Juncus effusus	PLUGS	24" O.C.
	Compact Oregon Grape Mahonia aquifolium 'Compacta'	1 GAL.	3' O.C.
	Deer Fern Blechnum spicant	1 GAL.	24" O.C.
	Kelsey Dogwood Cornus sericea 'Kelsey'	1 GAL.	3' O.C.
	Common Rush Juncus effusus	PLUGS	24" O.C.
	Kelsey Dogwood Cornus sericea 'Kelsey'	1 GAL.	3' O.C.
	Small Fruited Bull Rush Cornus sericea 'Kelsey'	PLUGS	18" O.C.
	Sword Fern Polystichum munitum	1 GAL.	3' O.C.
	Light		
	Sign		
	Existing Tree		
	Existing landscape area Maintain existing trees, shrubs and groundcovers		
	Bark/Mulch dressing area		

NOTES

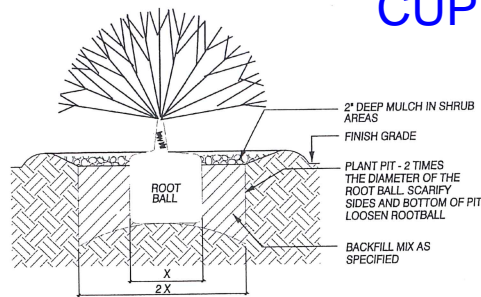
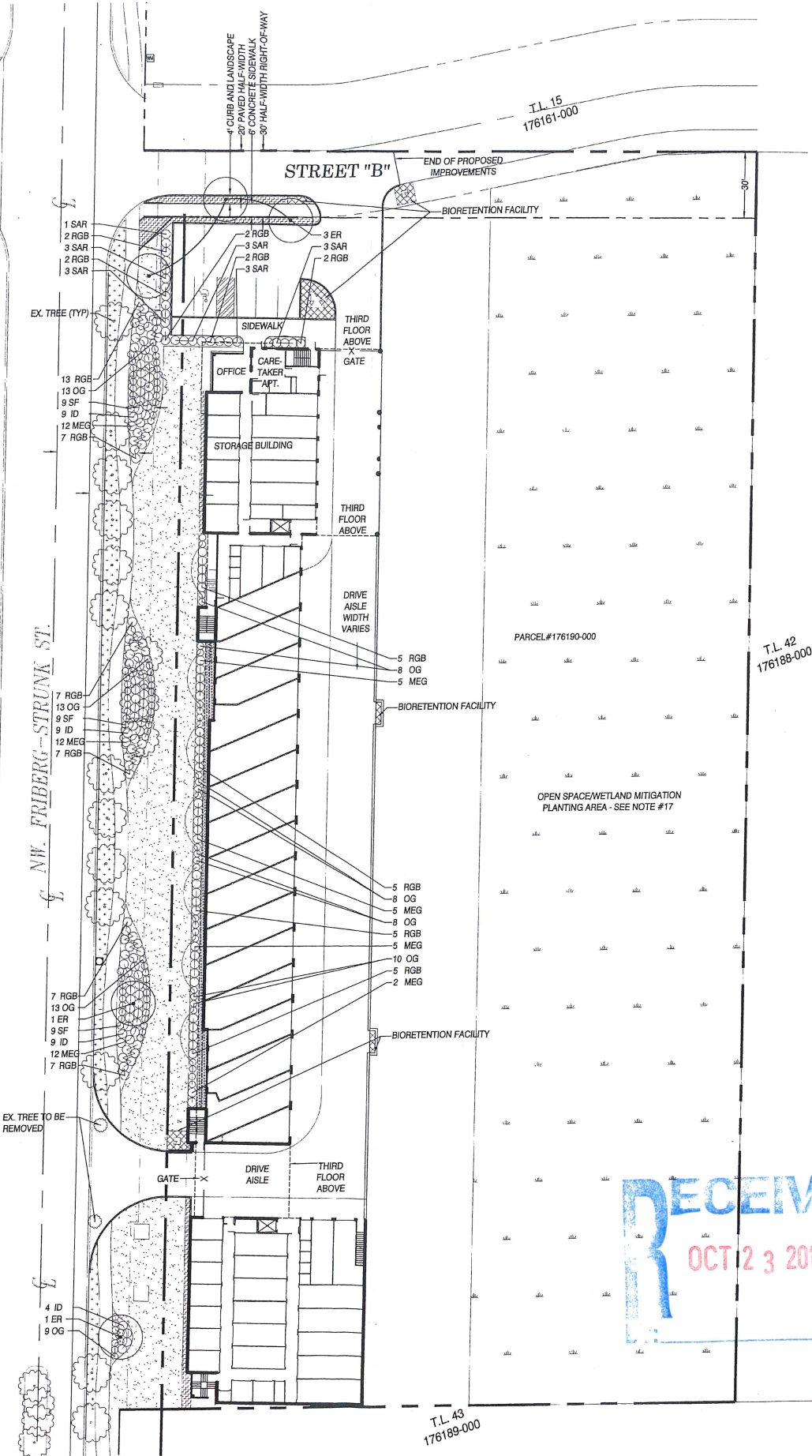
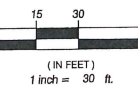
1. Installation shall fully comply with all landscape code requirements and any City of Camas conditions of approval.
2. Irrigation shall be provided as required to ensure establishment and survivability of the required landscaping. (Irrigation shall be provided by a fully automatic underground system design/build by the landscape contractor).
3. All landscaping shall be installed in a sound workman-like manner, and according to accepted good planting procedures with quality plant materials.
4. The owner, or his agent, shall be responsible for the maintenance of all landscaping which shall be maintained in good condition so as to present a healthy, neat, and orderly appearance, and shall be kept free from refuse and debris.
5. All existing vegetation shall be removed from areas to receive construction activities.
6. There are no berms or fences proposed at this time.
7. The proposed stormwater facilities are surface water management features integrated with the landscape.
8. There are no active or passive recreational features proposed.
9. Plants shall be spaced as indicated above unless otherwise shown on the plan. If a discrepancy exists, the plan shall prevail.
10. Contractor shall verify species and quantities of all plant material prior to bid.
11. Install jute erosion control fabric on all slopes 2:1/2:1 and greater. Refer to Civil Engineering plans.
12. Prior to installation of topsoil, cross-rip at 18" o.c. or rototill subgrade to an 8"-12" depth.
13. Install minimum 12" depth on-site and/or imported topsoil in all shrub and groundcover planting areas, 6" in lawn areas. Amend topsoil with 2" minimum layer composted yard debris prior to installation of plant material. Imported topsoil shall be a sandy loam topsoil with a combined silt and clay content less than 20% and medium to very fine sand 60%-70% which shall be percentages by weight of those particles passing a 2mm screen. The remaining percentages shall be particles larger than medium to very fine sand (coarse or very coarse sand or gravel sized particles). All particles shall pass a 1/2" screen. All topsoil shall be free from subsoil, debris, turf, mushrooms, weeds or any other objectionable material. If subgrade is comprised of rock, rock fill or cement treated soil, remove subsoil from site and deposit topsoil to the following depths: 24" minimum depth in all planting areas. Allow no cross contamination of cement treated soil with placed topsoil. On-site topsoil shall be defined as being a friable loam surface soil found at a depth, in its natural state, of less than 18 inches. Topsoil shall be free from subsoil, clay lumps larger than 2 inches, debris, turf, weeds, roots, contaminants or other objectionable material. Topsoil on-site meeting these specifications may be used.
14. Install minimum 2" bark mulch in all new landscape areas within 2 days of planting.
15. Prune/shape, remove dead wood, dangerous, branches, etc. of existing trees to remain. Remove debris, weeds, undesirable brush, etc.
17. Refer to the Critical Areas Report by Cascadia Ecological Services, Inc. for landscaping within wetland areas.
18. Refer to Civil Engineering plans for soil requirements for bioretention facilities.

APPLICANT/OWNER:
UNION STORAGE, LLC
23801 NE 42ND COURT
RIDGEFIELD, WA 98642
(360) 787-3465
tsrassenberg@unionsm.com

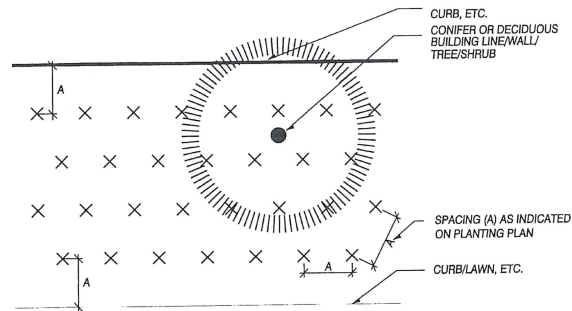
CONTACT:
OLSON ENGINEERING, INC.
ATTN: GAYLE GERKE
222 E. EVERGREEN BLVD.
VANCOUVER, WA 98660
(360) 695-1385
FAX (360) 695-8117
gayleg@olsonengr.com

SITE PLAN BASED ON LAYOUT PROVIDED BY PLANNING SOLUTIONS, INC.

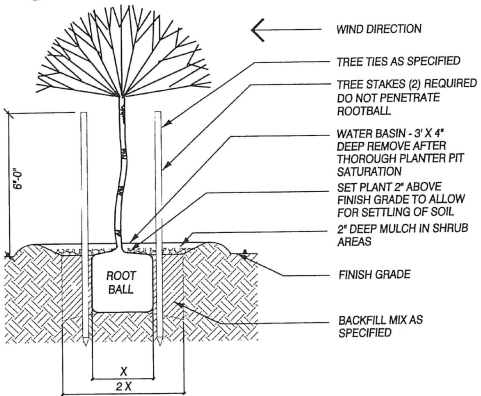
GRAPHIC SCALE



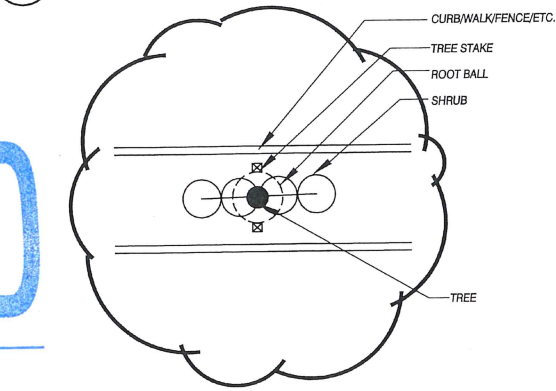
1 SHRUB/GROUND COVER PLANTING
SCALE: NTS



2 GROUND COVER PLANTING
SCALE: NTS



3 DECIDUOUS/CONIFER TREE PLANTING
SCALE: NTS



NOTE - WHERE TREES ARE INDICATED IN SHRUB BED OR HEDGE, MAINTAIN SHRUB SPACING INDICATED. OFFSET TREE STAKES AS REQUIRED.

4 TREE STAKING DETAIL
SCALE: NTS

FILE: J:\data\9000\9400\9410\9417\Landscaping\9417.prelim.landscape.dwg
PLOT: consultant3.ctb

PRELIMINARY LANDSCAPE PLAN FOR:

UNION SELF-STORAGE

LAND SURVEYORS
ENGINEERS
ENGINEERING INC.

360-695-1385
360-695-8117

222 E. EVERGREEN BLVD., VANCOUVER, WA 98660



STATE OF WASHINGTON
REGISTERED
LANDSCAPE ARCHITECT
REBECCA J. WAHLSTROM
CERTIFICATE NO. 1141

CHANGES / REVISIONS

DESCRIPTION: DATE: