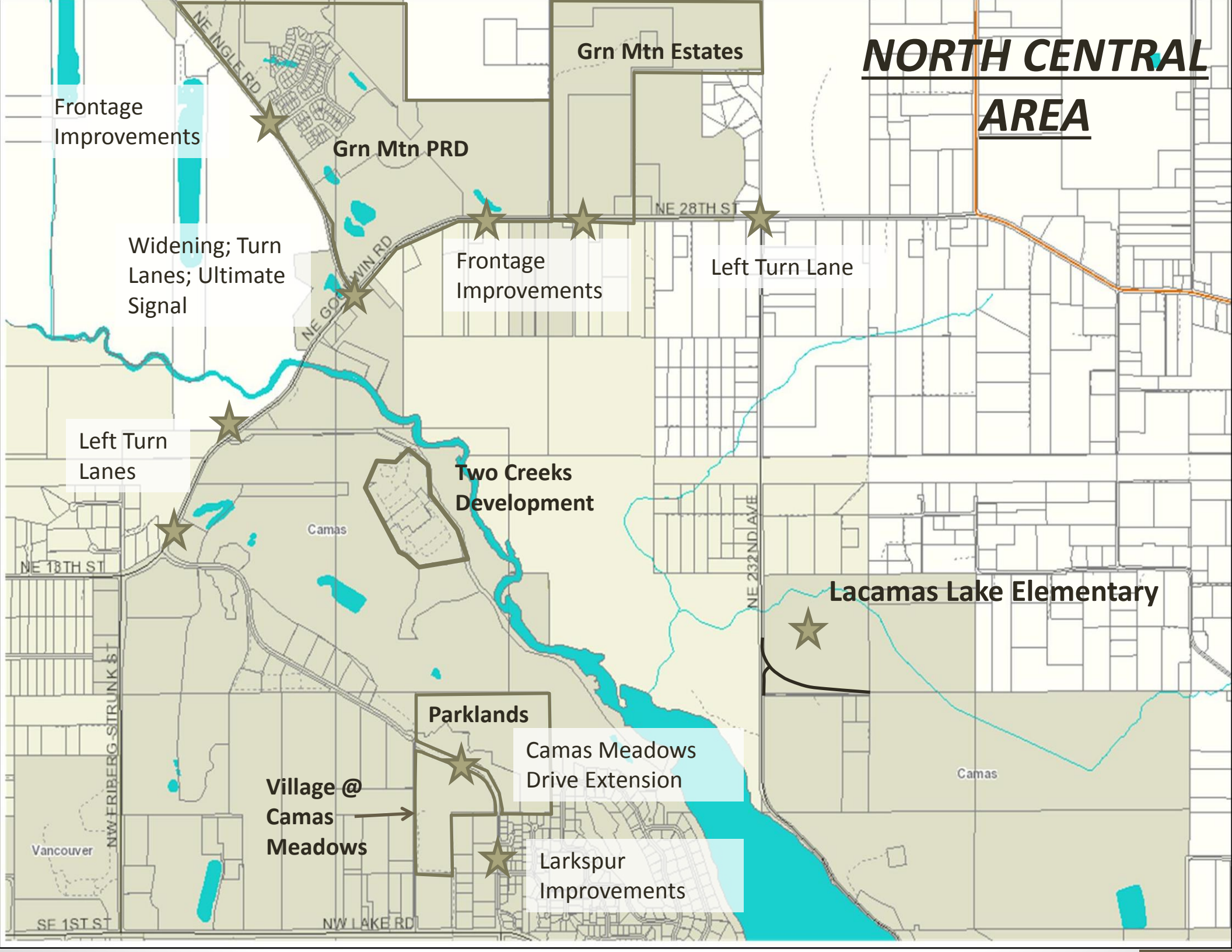


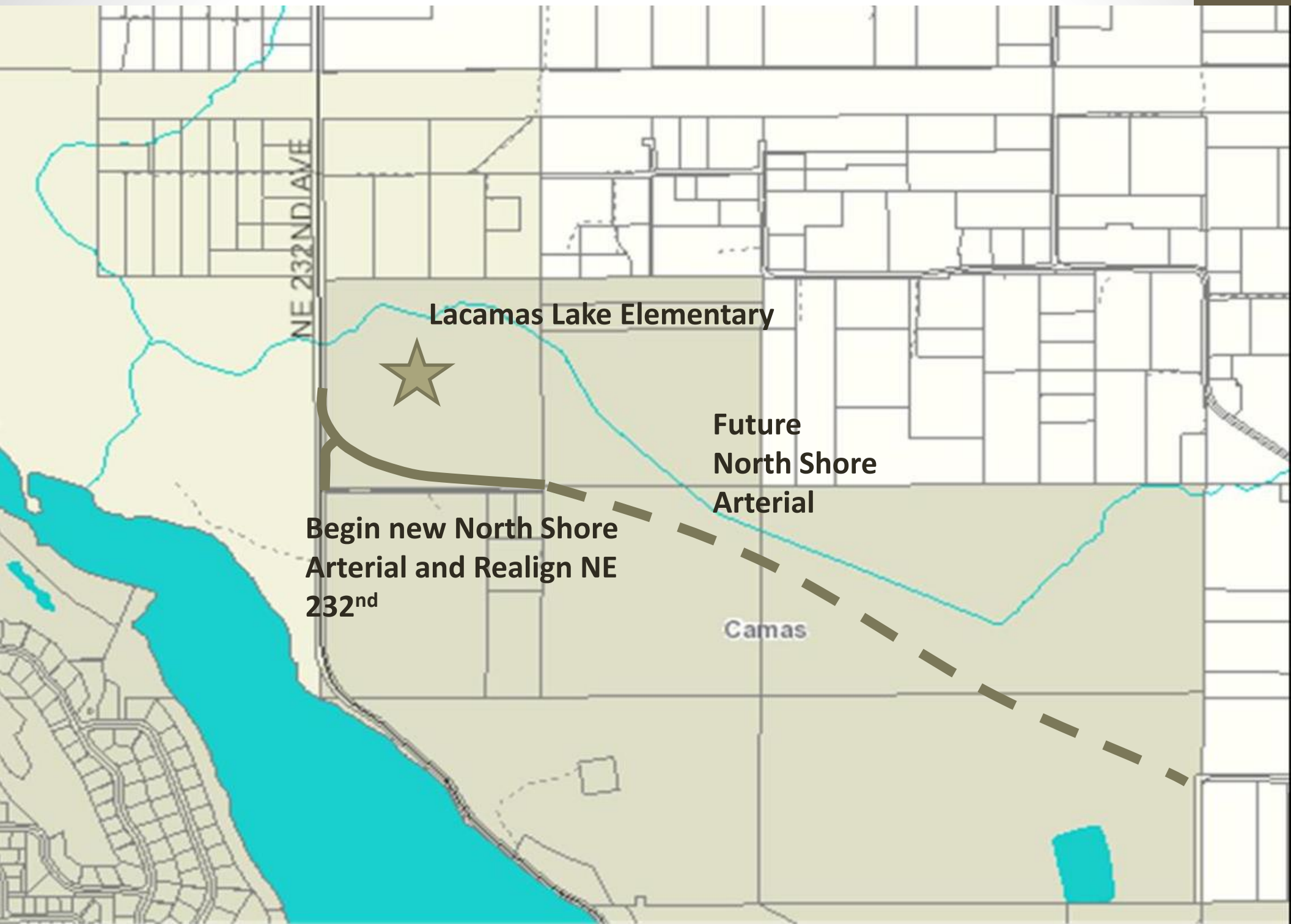
Development Construction Project Update

City Council Workshop
August 7, 2017



NORTH CENTRAL **AREA**





NE 232ND AVE

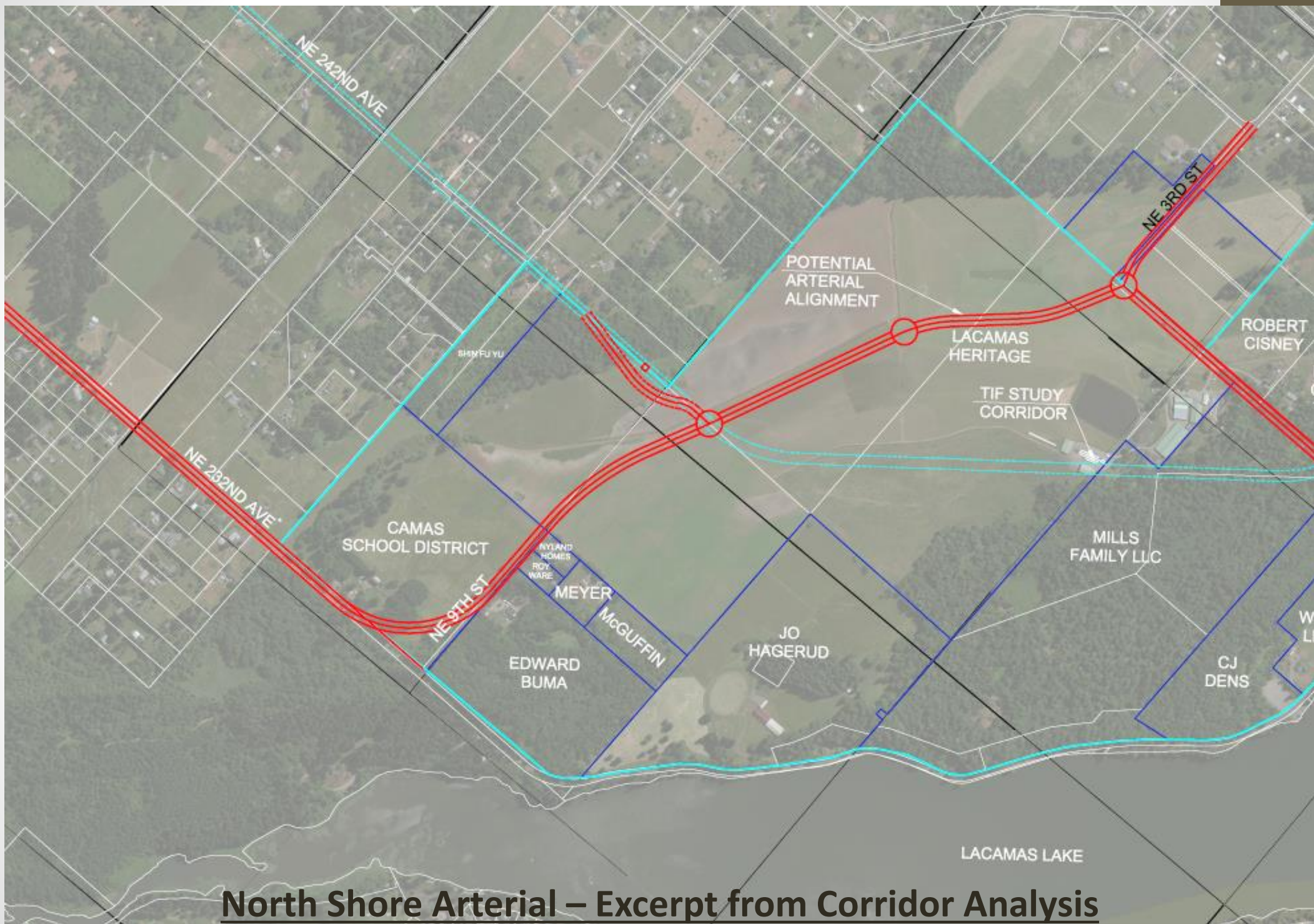
Lacamas Lake Elementary



Future
North Shore
Arterial

Begin new North Shore
Arterial and Realign NE
232nd

Camas



North Shore Arterial – Excerpt from Corridor Analysis

SOUTHWEST **AREA**

New Signal @
Payne/Pac Rim

New Intersection
and Entrance to
Campus @ Lacey

**CSD Pacific Rim
Campus**

Sharp

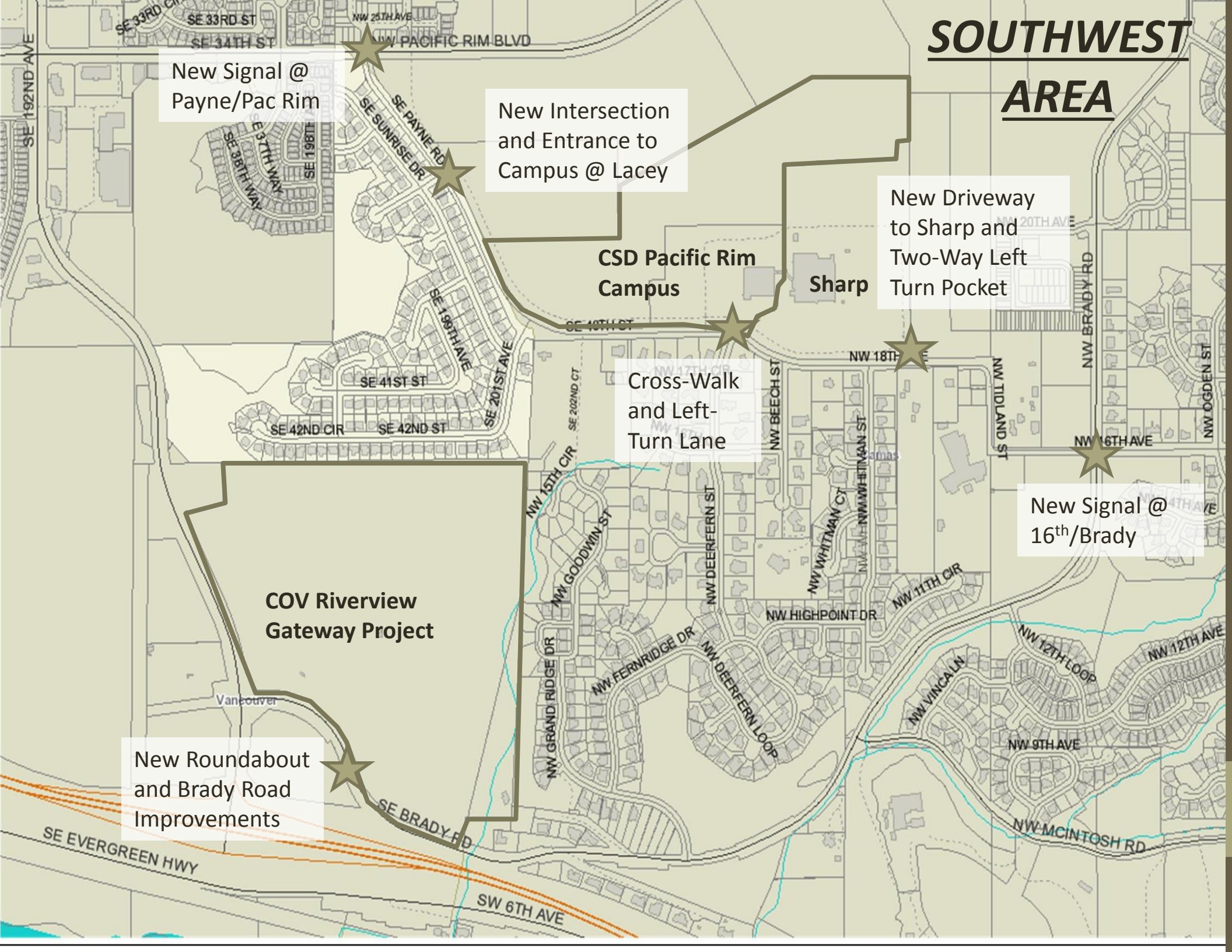
New Driveway
to Sharp and
Two-Way Left
Turn Pocket

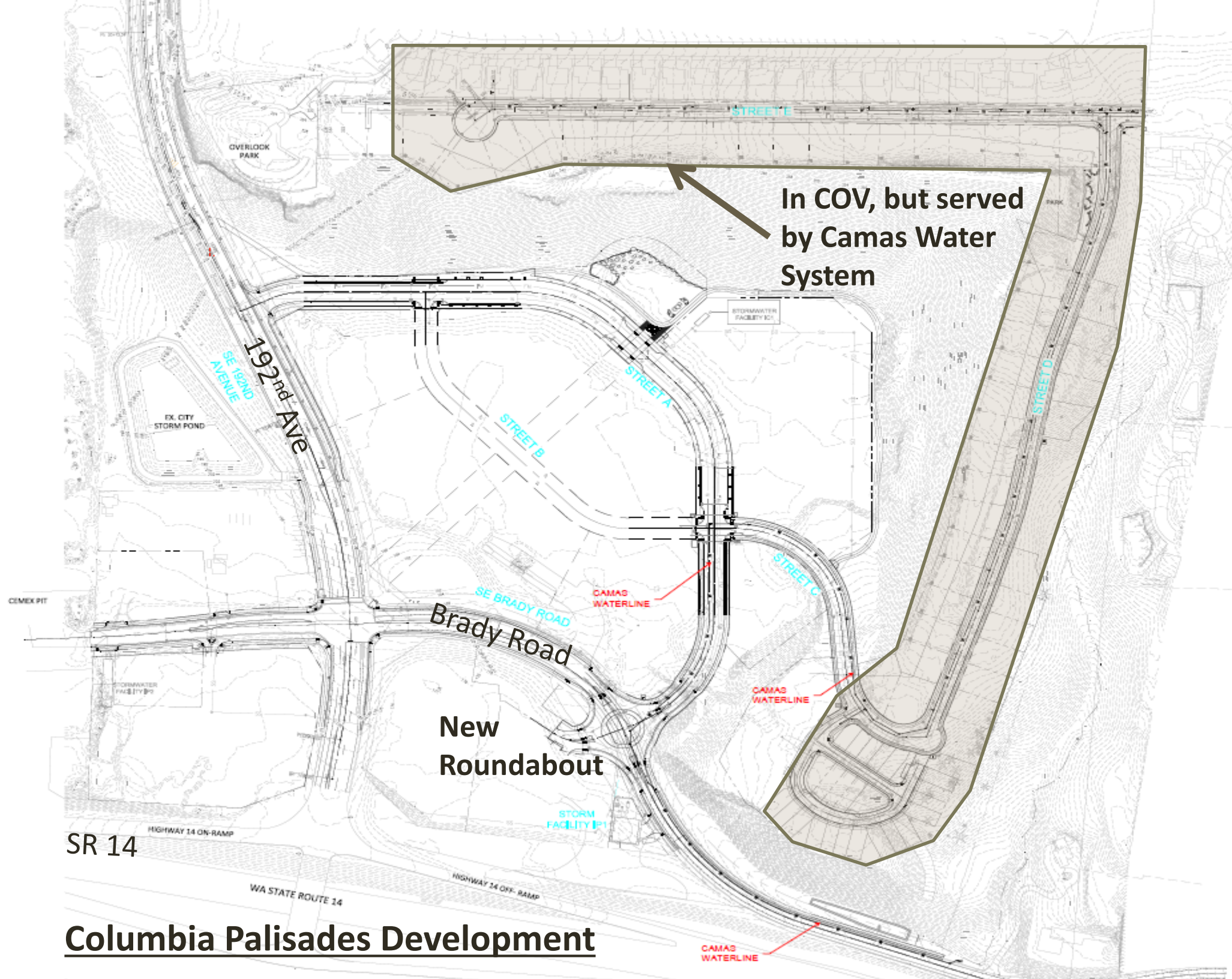
Cross-Walk
and Left-
Turn Lane

New Signal @
16th/Brady

**COV Riverview
Gateway Project**

New Roundabout
and Brady Road
Improvements





In COV, but served
by Camas Water
System

Brady Road

New
Roundabout

SR 14

Columbia Palisades Development

Camas/Vancouver Interlocal Agreements for Water Service

- Two forthcoming agreements with Vancouver
- Water Service Area Boundaries
 - Modify water service area boundaries for Camas to serve upper rim of Columbia Palisades Project
 - Vancouver water pressures not adequate to serve area
 - Vancouver request to turn water off in event of non-payment of sewer/storm bill
- Water System Intertie
 - Provide for emergency intertie between the two water systems
- Agreements and new Ordinance on future agenda