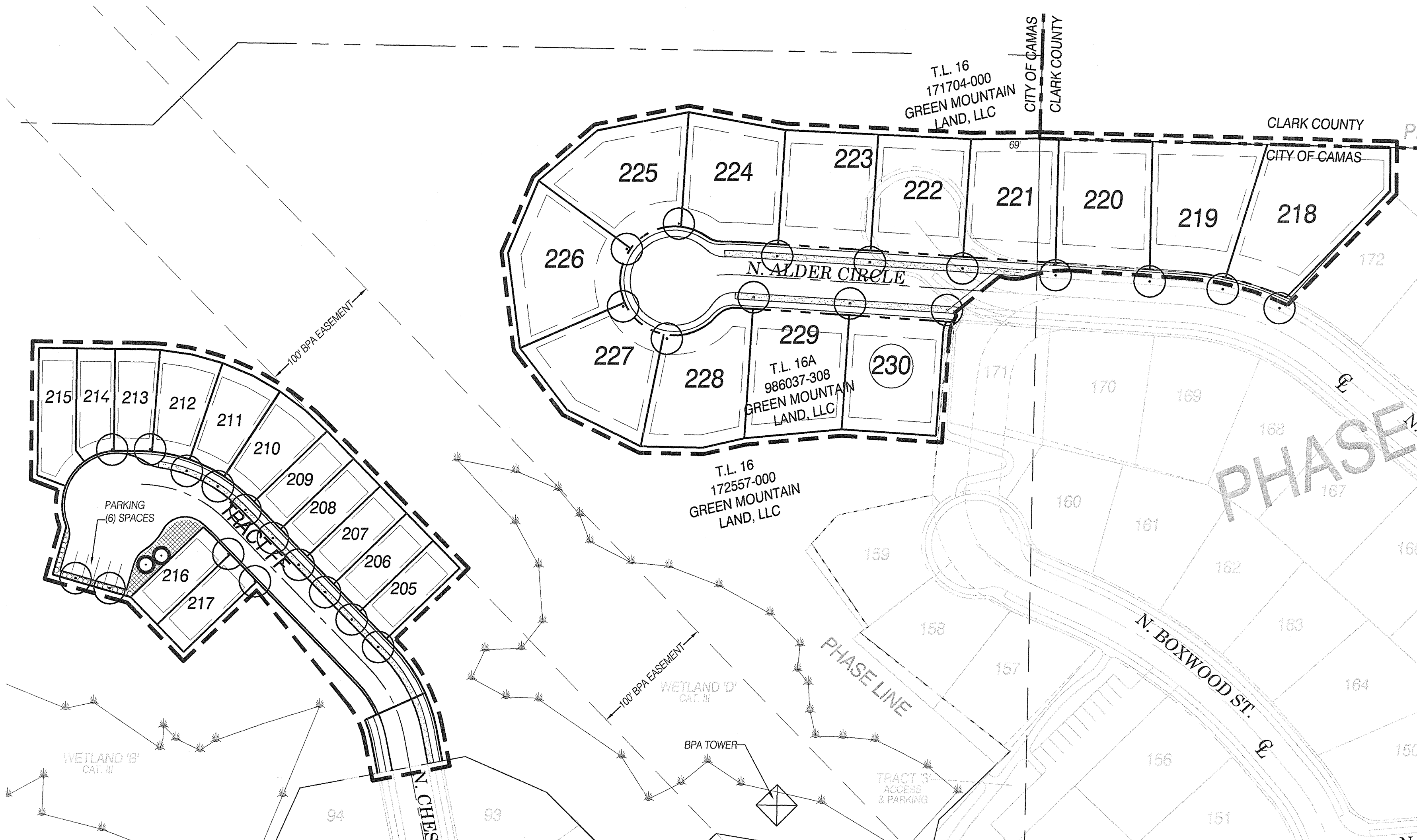
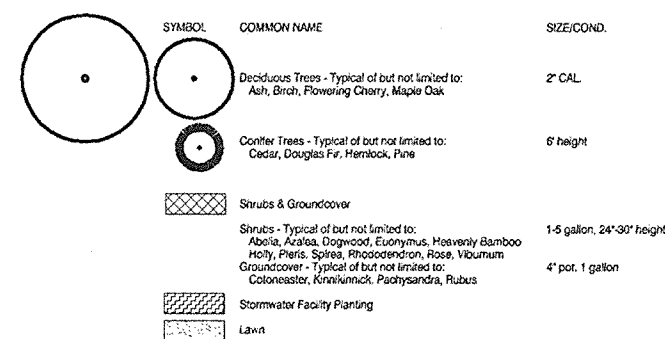


## OVERALL GREEN MOUNTAIN PROJECT MAP

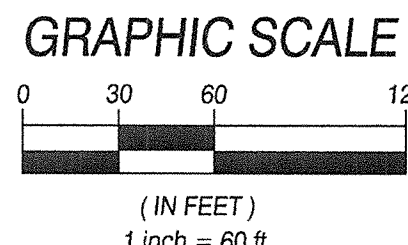


## LANDSCAPE LEGEND



## LANDSCAPE NOTES

- [illegible]



OWNER:  
GREEN MOUNTAIN LAND, LLC  
17933 NW EVERGREEN PARKWAY, SUITE 300  
BEAVERTON, OR 97006  
(503) 597-7100  
(503) 597-7149 FAX  
john.schmidt@metalandgroup.com

APPLICANT:  
GREEN MOUNTAIN DEVELOPMENT SERVICE  
C/O MILLER NASH GRAHAM & DUNN LLP  
500 BROADWAY STREET, SUITE 400  
VANCOUVER, WA 98660  
(360) 619-7002  
leanne.bremer@millernash.com

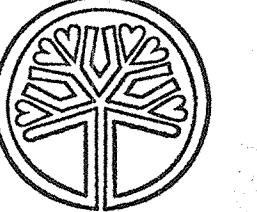
CONTACT:  
OLSON ENGINEERING, INC.  
ATTN: STACY HICKMAN  
222 E. EVERGREEN BLVD.  
VANCOUVER, WA 98660  
(360) 695-1835  
FAX (360) 695-8117  
stacy@olsoneng.com


PLOT: consultant3.ctb  
FILE: j:/data/8000/8900/8930/8938/Planning/8938.p.master plan.dwg

CONCEPTUAL LANDSCAPE PLAN FOR:

# GREEN MOUNTAIN MIXED USE PRD PHASE 2

**OLSON** LAND SURVEYORS  
ENGINEERS  
ENGINEERING INC.  
222 E. EVERGREEN BLVD. VANCOUVER, BC V6Z 1K1



STATE OF  
WASHINGTON  
LICENSED  
LANDSCAPE ARCHITECT  
  
STACY HICKMAN  
LICENSE NO. 901  
PIRES ON 9.28.2017

### CHANGES / REVISIONS

[illegible]

DESIGNED: SAH

DRAWN: SAH

CHECKED: KFS/MRO

DATE: NOVEMBER 2016

SCALE: H: 1" = 60'  
V:

COPYRIGHT 2016 OLSON ENGINEERING, INC.

GREEN MOUNTAIN PRD - PHASE 2

JOB NO. 8938 02 01

SHEET

LS1