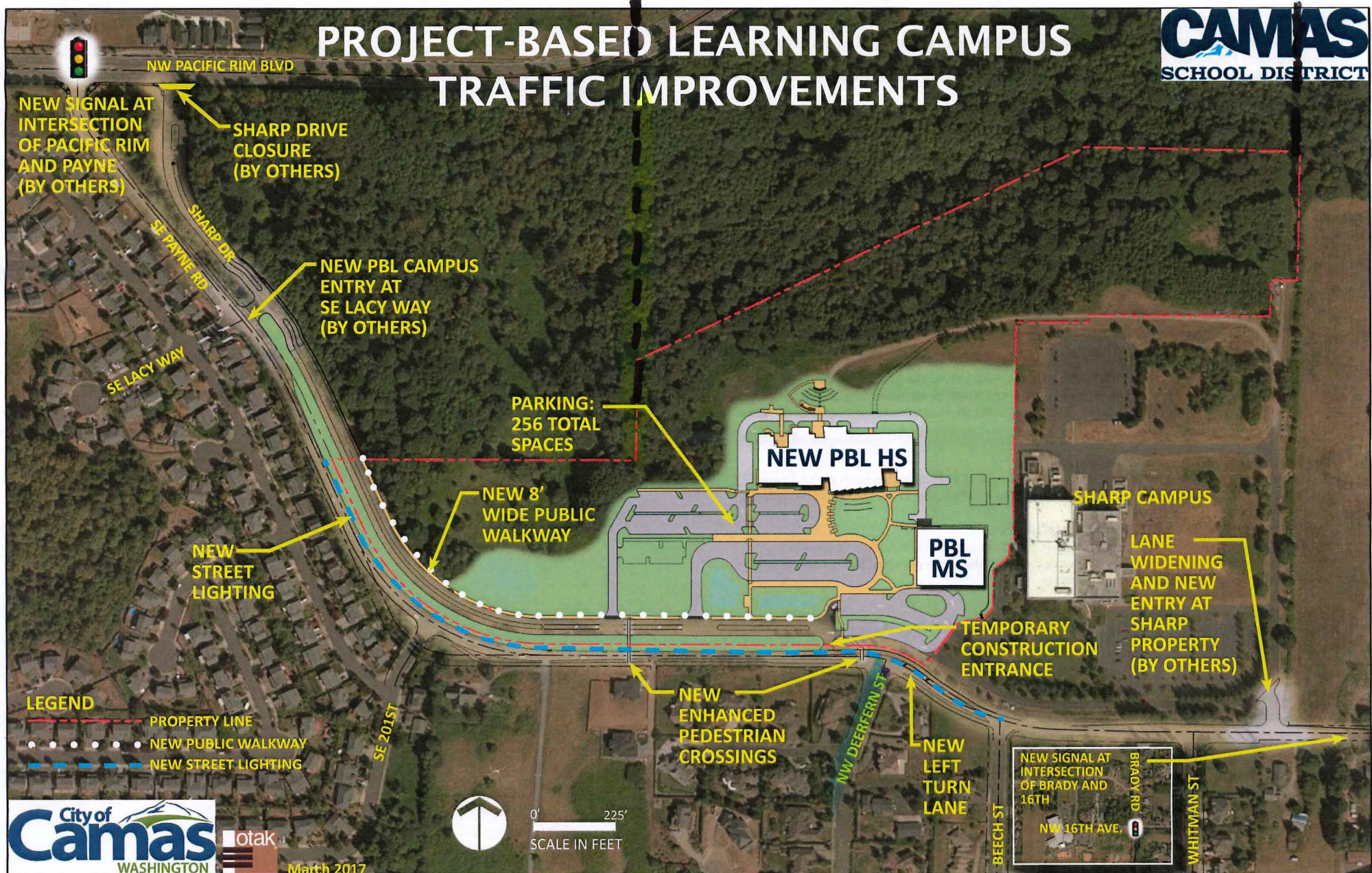




# PROJECT-BASED LEARNING CAMPUS TRAFFIC IMPROVEMENTS





The City of Camas will hold a public hearing on April 20, 2017, at 6 PM at City Hall related to Camas School District's Project-Based Learning (PBL) initiatives at what was previously known as the SHARP property. Thanks to the support of Camas voters, the district was able to purchase this property as well as SHARP's Microelectronics Lab in the spring of 2016.

#### **FREQUENTLY ASKED QUESTIONS**

##### **Why did the PBL HS move from the CHS campus to the SHARP site?**

We moved the PBL HS to the SHARP property for a few reasons, such as forming synergy between the middle and high school programs, creating greater opportunity for outdoor learning, and helping to alleviate the usage of the current high school campus. The district sought out public opinion on the move, holding two listening posts where residents could come to the district and talk about their concerns, a mailing notice, and emails to staff and parents. The school board voted in July 2016 to change the location of the high school to the SHARP site.

##### **How will students and staff access the PBL Campus?**

A new entry will be built at the point where Lacey Way intersects Payne Road to access the existing roadway currently known as Sharp Drive. Access to the future HS and current MS will be off of this roadway.

##### **Why is the SHARP Drive/Pacific Rim Blvd. intersection closing?**

This intersection is considered a failed intersection. With its proximity to the Payne Road/Pacific Rim Blvd. intersection just steps away, traffic travelling in and out of the SHARP property has long been problematic. This intersection is not sufficient to support the additional traffic that will be traveling in and out of the PBL campus in 2018.

##### **How many students will be at the new campus?**

When the PBL HS opens in the fall of 2018, we anticipate a total of 250 students in ninth and tenth grades. Ultimately, there will be 600 students in the high school. The middle school will house up to 500 students.

##### **What about the intersection of Brady Road and 16<sup>th</sup> Avenue?**

The district will construct a signalized intersection at 16<sup>th</sup> Avenue and Brady Road, the timing is to be determined in coordination with the City. This work is not included in the proposed high school scope of work. It will be designed and constructed separately.

##### **Why isn't the PBL entrance right in front of the building?**

The intersection at Lacey Way will utilize the existing roadway and allow school traffic to queue up on SHARP Drive instead of City roads.

##### **Where can I learn more?**

Details about this project, as well as all of the 2016 Bond Program Projects, can be found at:

<https://goo.gl/WJVCZI>

