



Camas Municipal Code (CMC)

Title 17 Land Development

May 2017

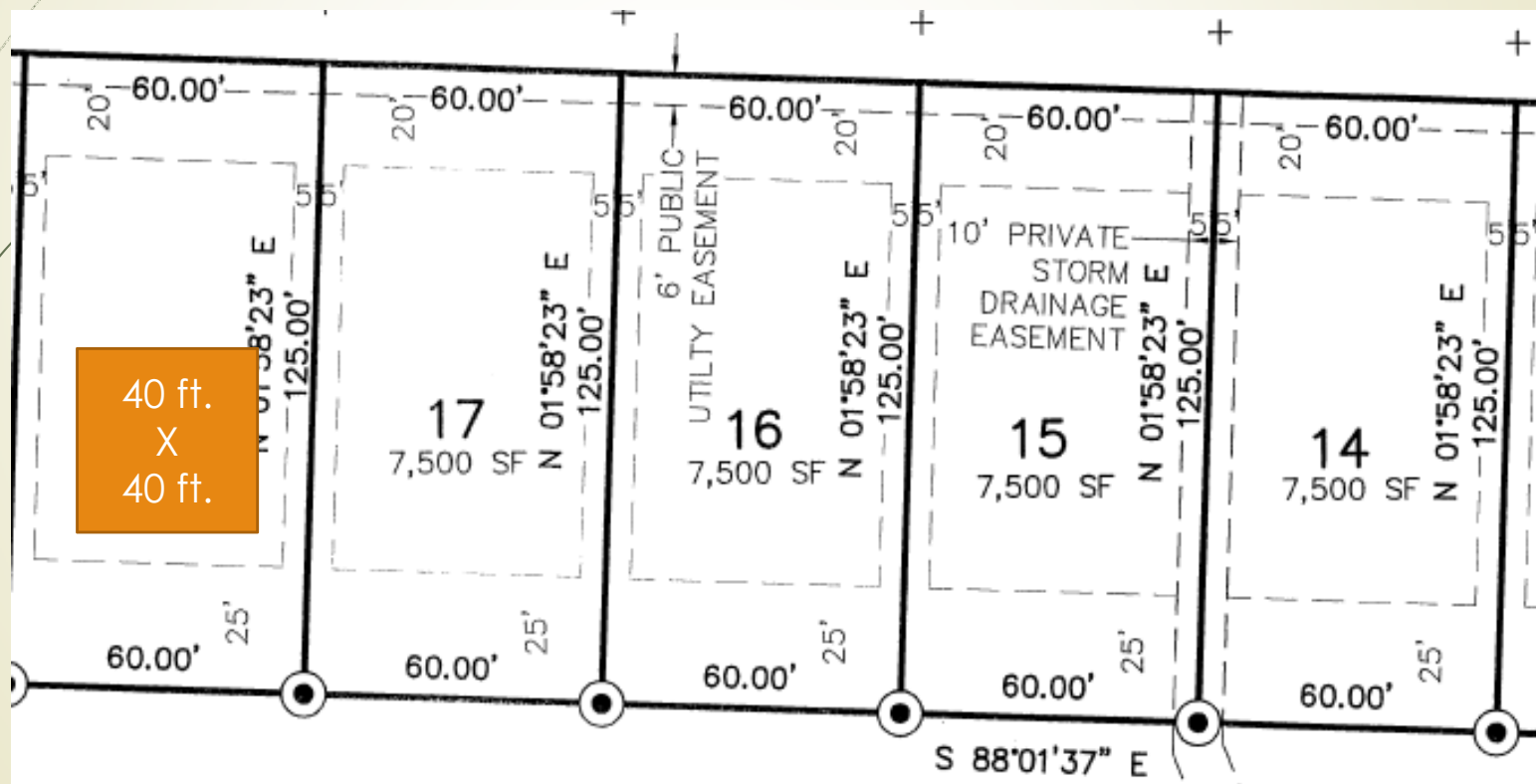
Boundary Line Adjustments CMC17.07.040 (I)

- ▶ Example – before adjustments
(Red lines and text)
 - ▶ There are four (4) lots
- ▶ Example – after adjustments
(Yellow lines)
 - ▶ Note that north street is not to current standards. (e.g. narrow pavement and no sidewalks)
 - ▶ There are still four (4) lots



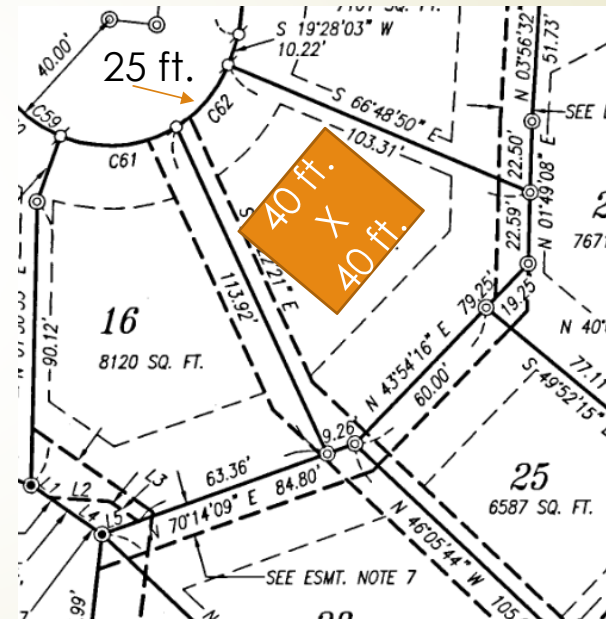
CMC Section 17.19.030 (D3) Tract, block and lot standards

Single-family example:



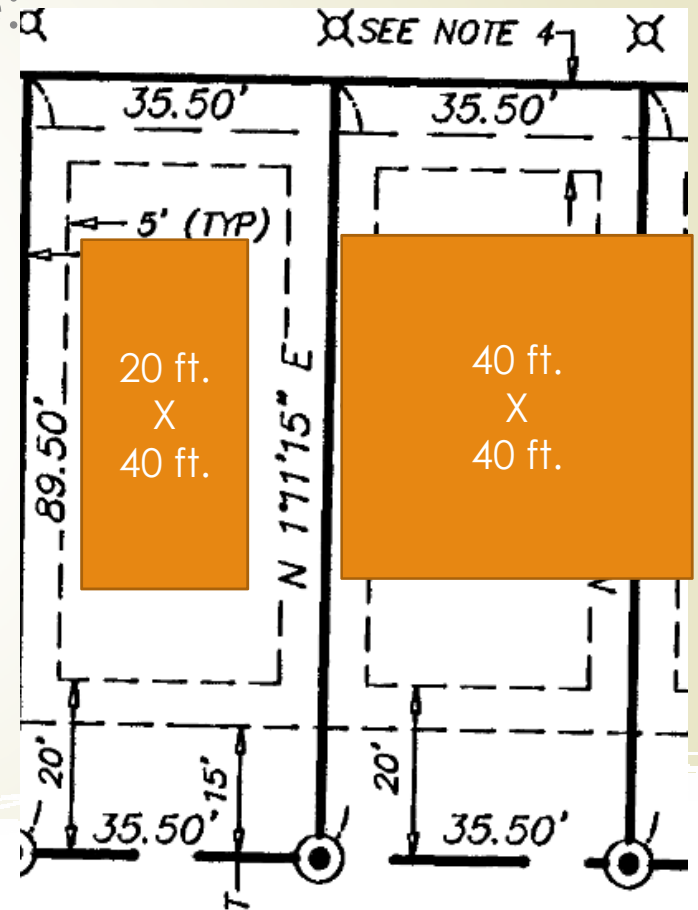
Building Envelopes

Example of analyzing pie-shaped lots



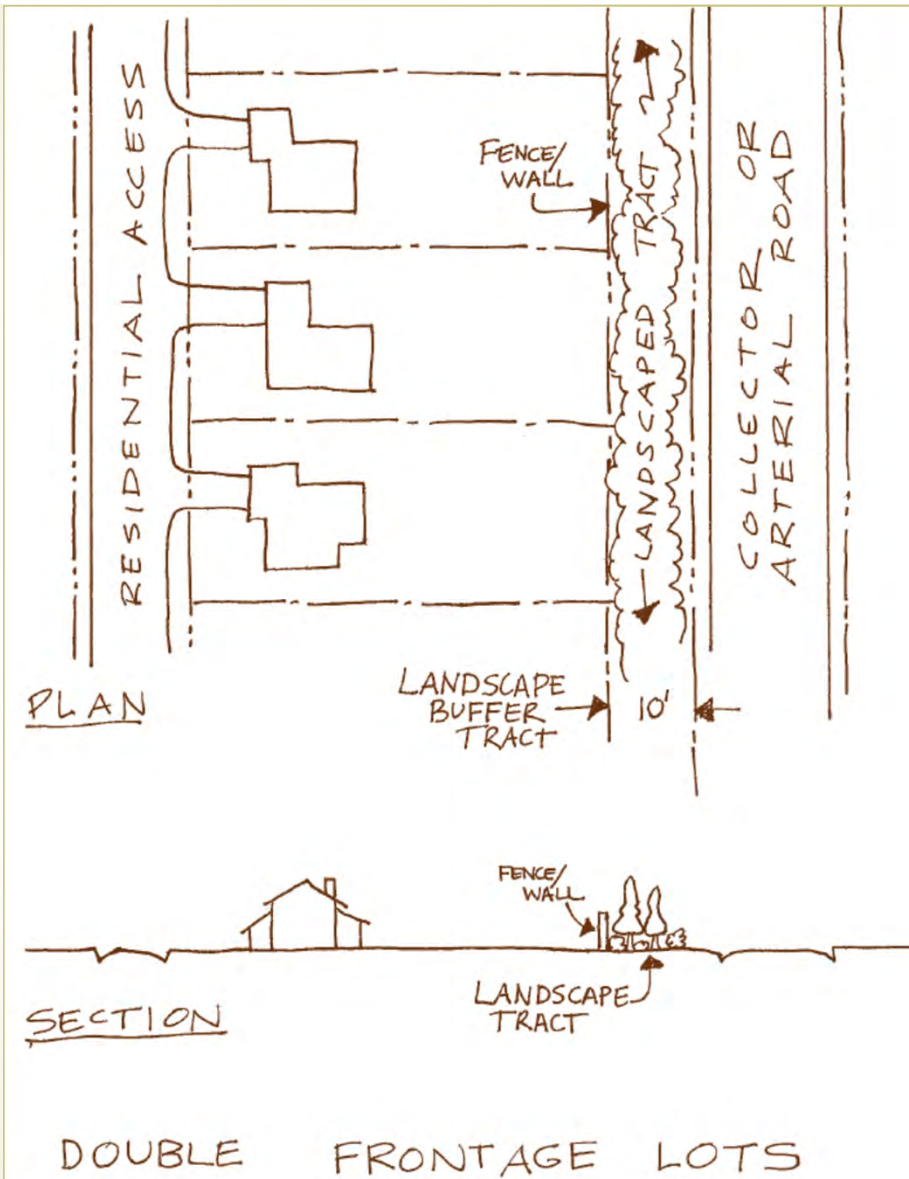
CMC Section 17.19.030

Building Envelopes - Multifamily example:



Double Frontage Lots

(Proposed Figure 17.19-1)



Examples:
Aesthetically
unappealing
streetscapes



Examples: Aesthetically pleasing streetscapes





Street Views : Lacking pleasing architectural design

Concerns:

- Fencing is monotonous
- Rooflines are the same
 - Building faces blank
- Building face lack dimension



Street Views: Better Design

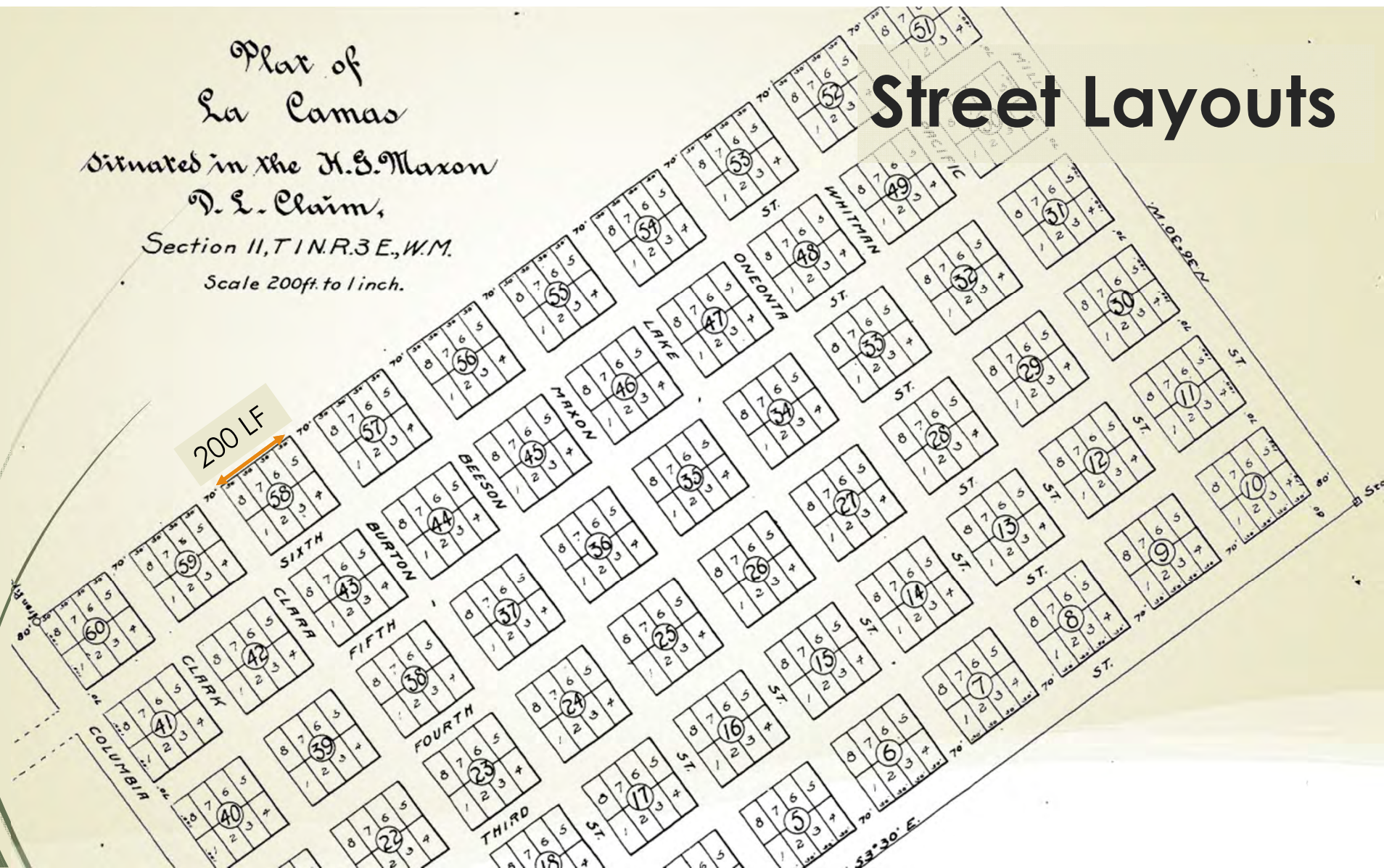
Better design is not prescriptive, however, it could include:

- Different roofing style and materials
- Reduce blank walls
- Stagger setbacks
- Different fencing styles



Plan of
La Camas
Situated in the N.E. Maxon
D. L. Claim,
Section 11, T. 1 N. R. 3 E., W. 4 M.
Scale 200ft. to 1 inch.

Street Layouts



Block Lengths
CMC Section
17.19.040-
Infrastructure
Standards

