

The background of the slide is a light gray gradient. It is decorated with numerous realistic water droplets of various sizes. Some droplets are large and prominent, while others are small and subtle. They are scattered across the slide, with a higher concentration in the top-left and bottom-right corners. Each droplet has a soft shadow and a highlight, giving it a three-dimensional appearance.

LEADBETTER ROAD PUMP STATION

PUBLIC HEARING

APRIL 4, 2017



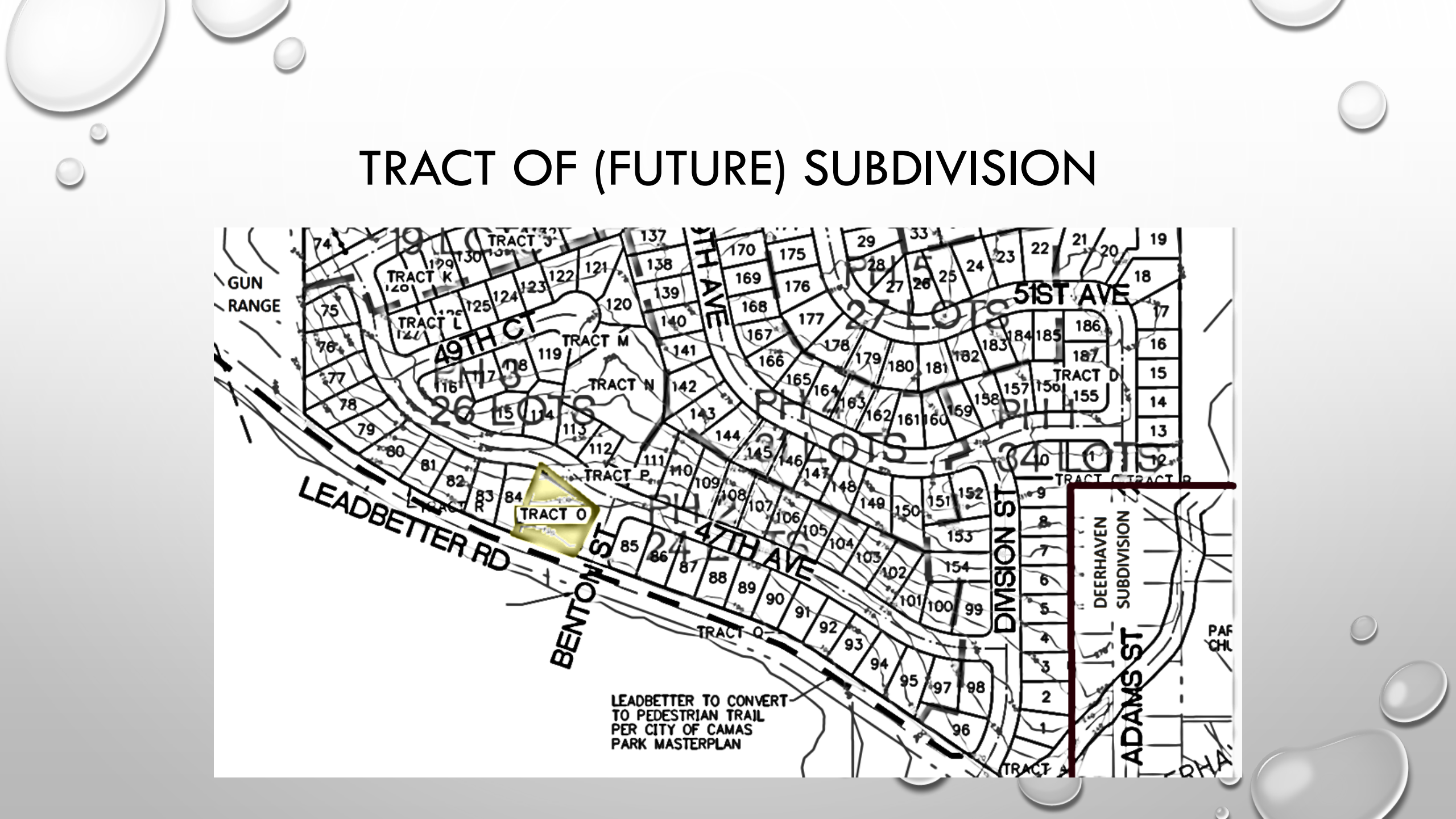


Location of Future Subdivision ("CJ Dens")

TRACT OF (FUTURE) SUBDIVISION

TRACT OF (FUTURE) SUBDIVISION

Map showing various tracts (A through O) and lots. Key streets include 51st Ave, 49th Ct, 47th Ave, 44th Ave, 42nd Ave, 40th Ave, 38th Ave, 36th Ave, 34th Ave, 32nd Ave, 30th Ave, 28th Ave, 26th Ave, 24th Ave, 22nd Ave, 20th Ave, 18th Ave, 16th Ave, 14th Ave, 12th Ave, 10th Ave, 8th Ave, 6th Ave, 4th Ave, 2nd Ave, and Adams St. A yellow triangle highlights Tract O. A red rectangle highlights a portion of the map on the right side, near Adams St. A note at the bottom left states: 'LEADBETTER TO CONVERT TO PEDESTRIAN TRAIL PER CITY OF CAMAS PARK MASTERPLAN'.





LEAD BETTER ROAD P.S.
TOWARD LAKE



RESIDENTIAL PROPERTIES ALONG LEADBETTER ROAD

HISTORIC HOME



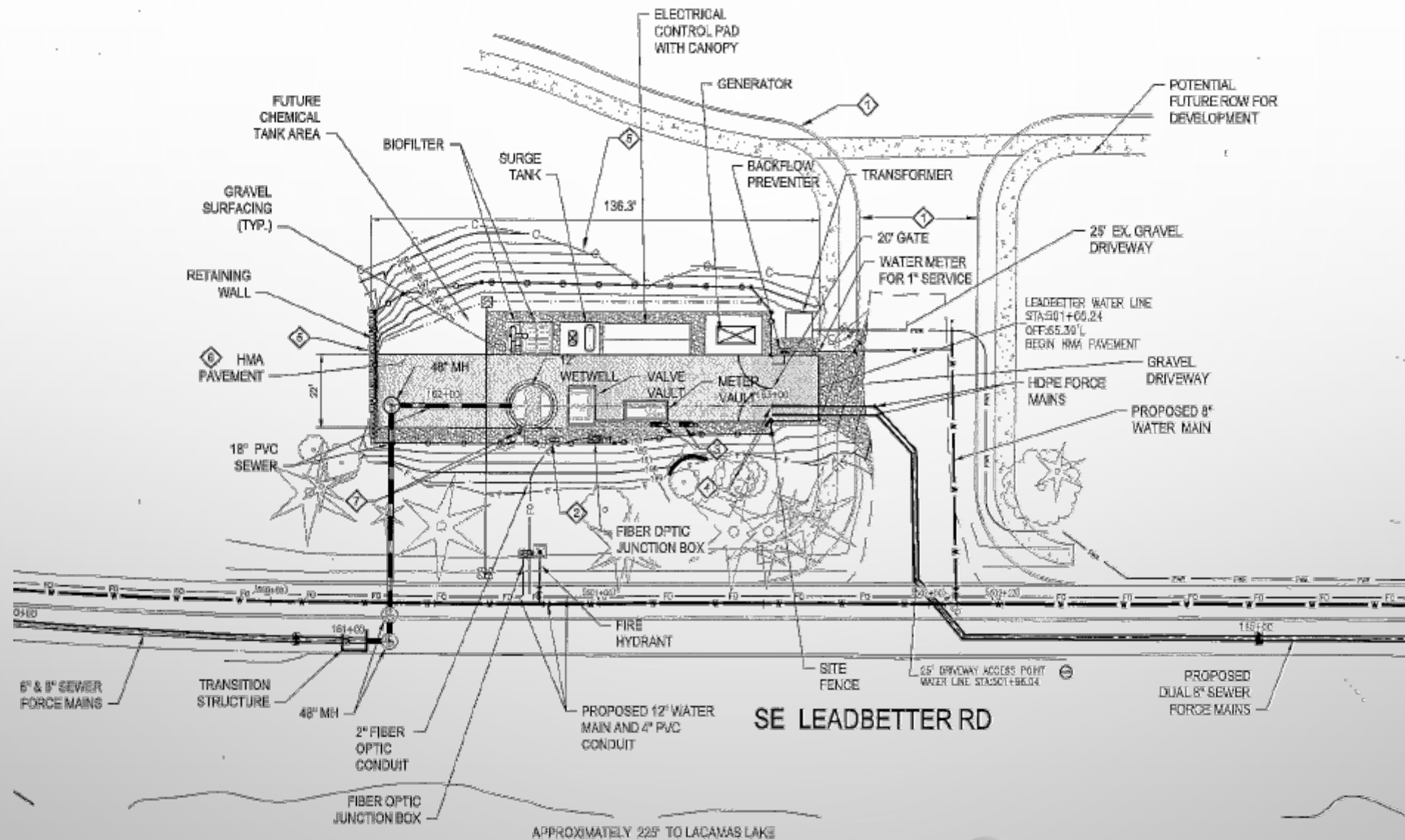
ROSE FARM



NEW SUBDIVISION



Deerhaven At Lacamas Lake



LEADBETTER ROAD PUMP STATION SITE PLAN

1" = 20'-0"

