

mahlum

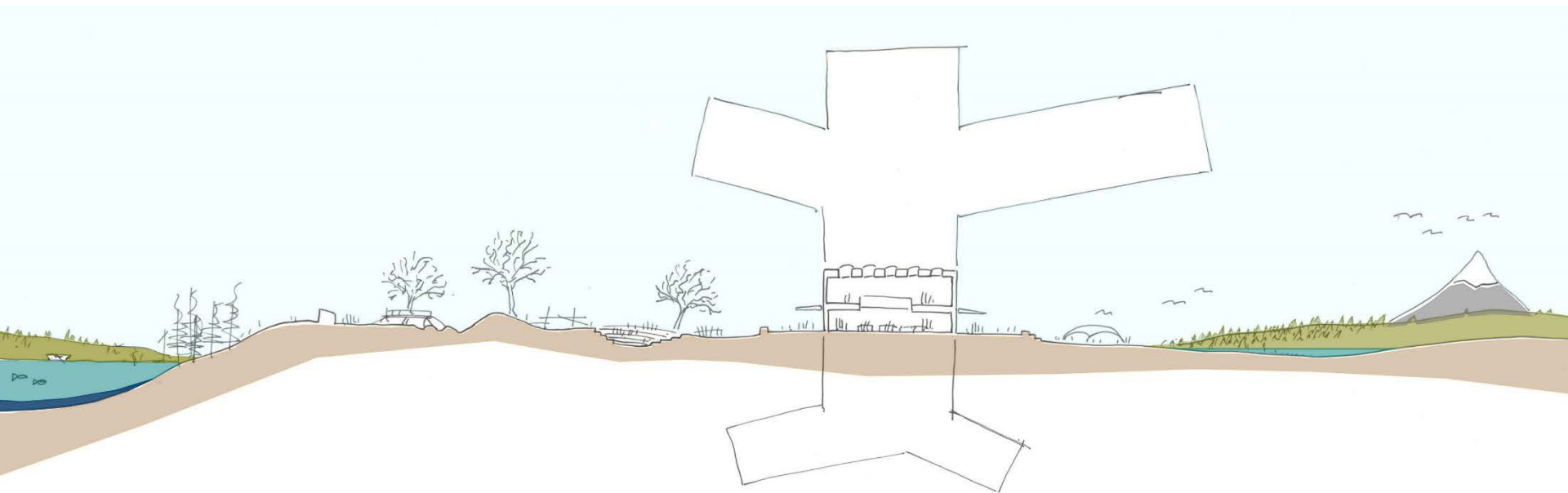
28 FEBRUARY 2017

New Lacamas Heights ES, Camas School District

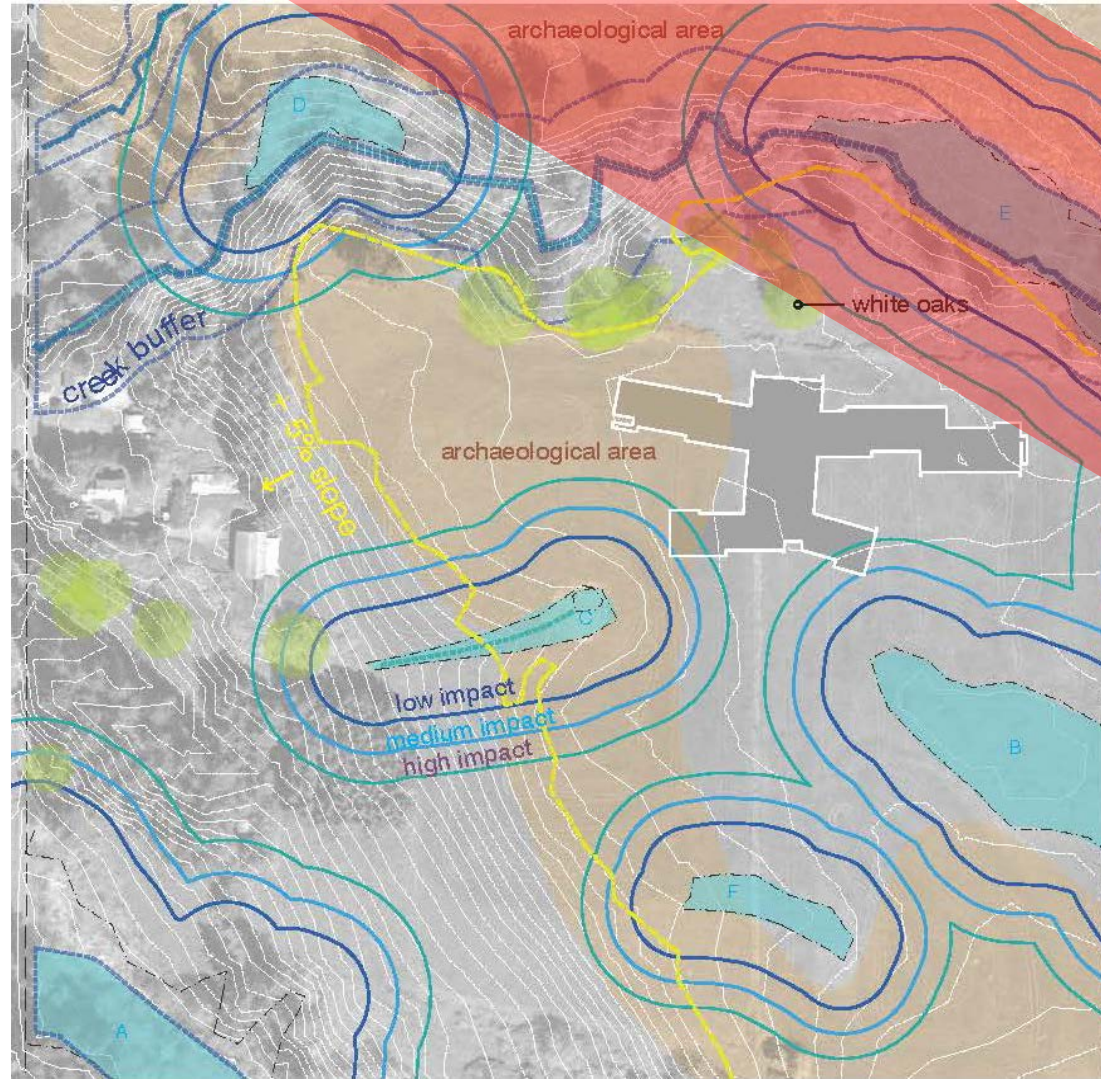


A School in the Country

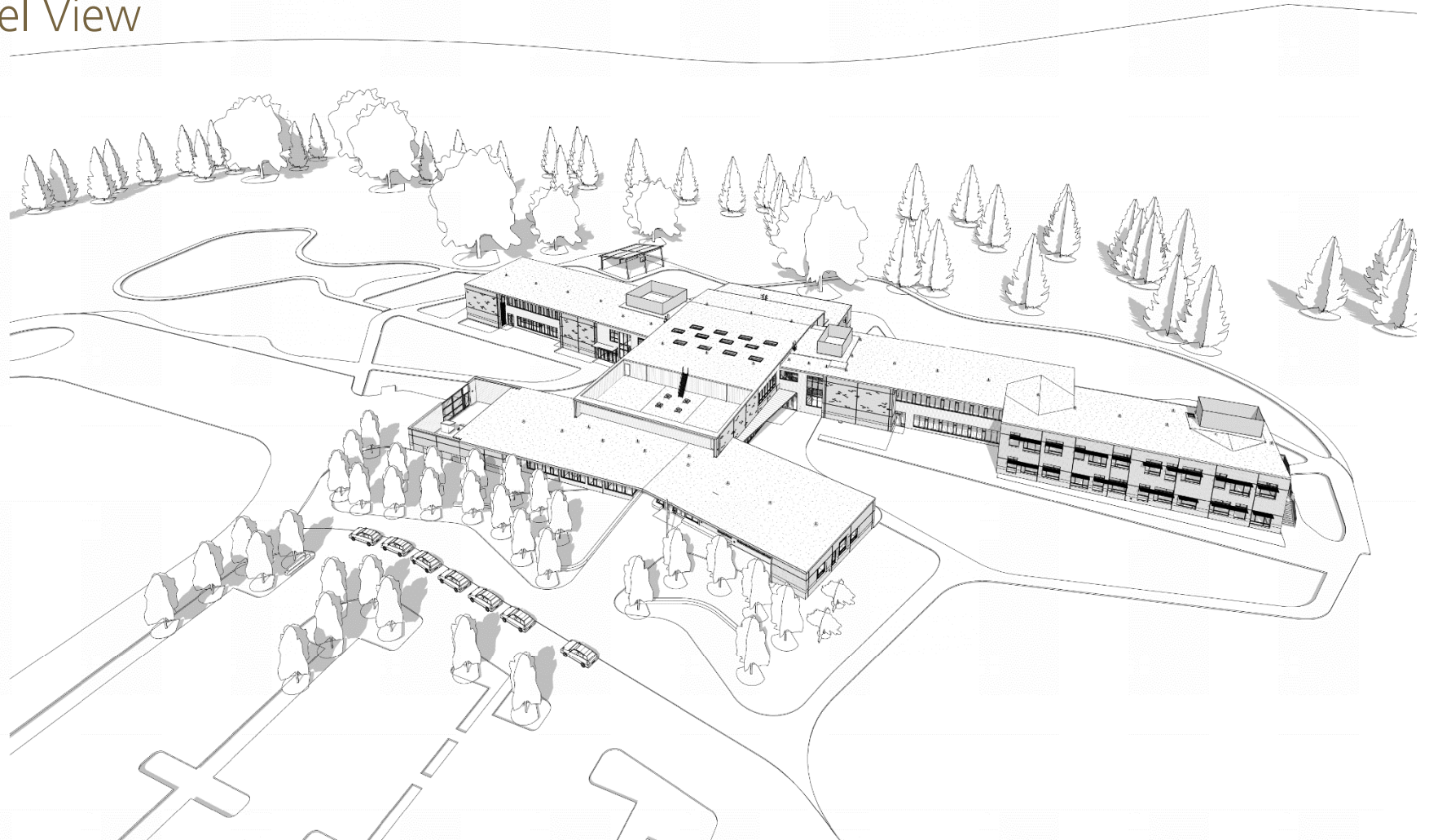
A collaborative K-5 learning environment that connects students to the natural environment and encourages curiosity



Site Constraints

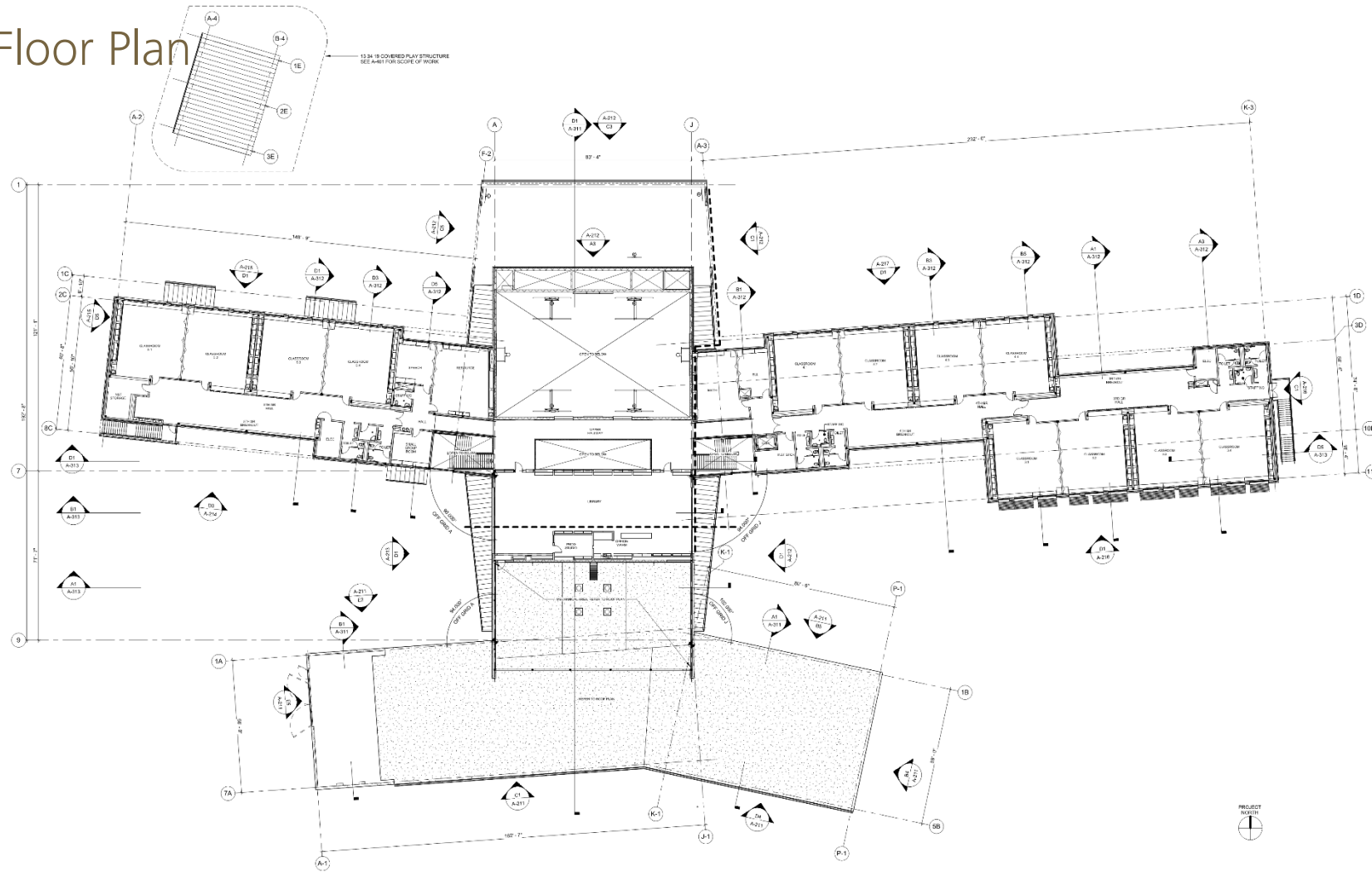


Ariel View



[illegible]

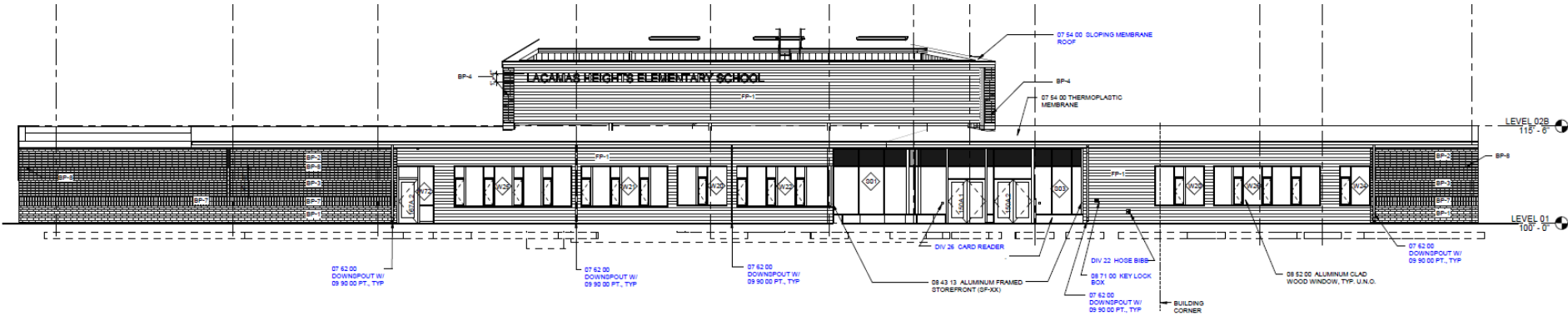
Second Floor Plan



Exterior view of Entry



Materials



STOREFRONT DOORS (ACCENT COLOR)
COLOR: TERRA COTTA

STOREFRONT —
ALUMINUM CLAD WOOD WINDOWS
METAL PANEL (MP-1&2)
MECHANICAL SCREENS
COLOR: DARK GREY

CONCRETE MASONRY UNIT (CMUV-1)
COLOR: CASTLE WHITE
SIZE: 8" TALL BLOCK

BRICK VENEER (BP-1 THROUGH BP-8)
COLOR: AUTUMN SANDS
SIZE: VARIES

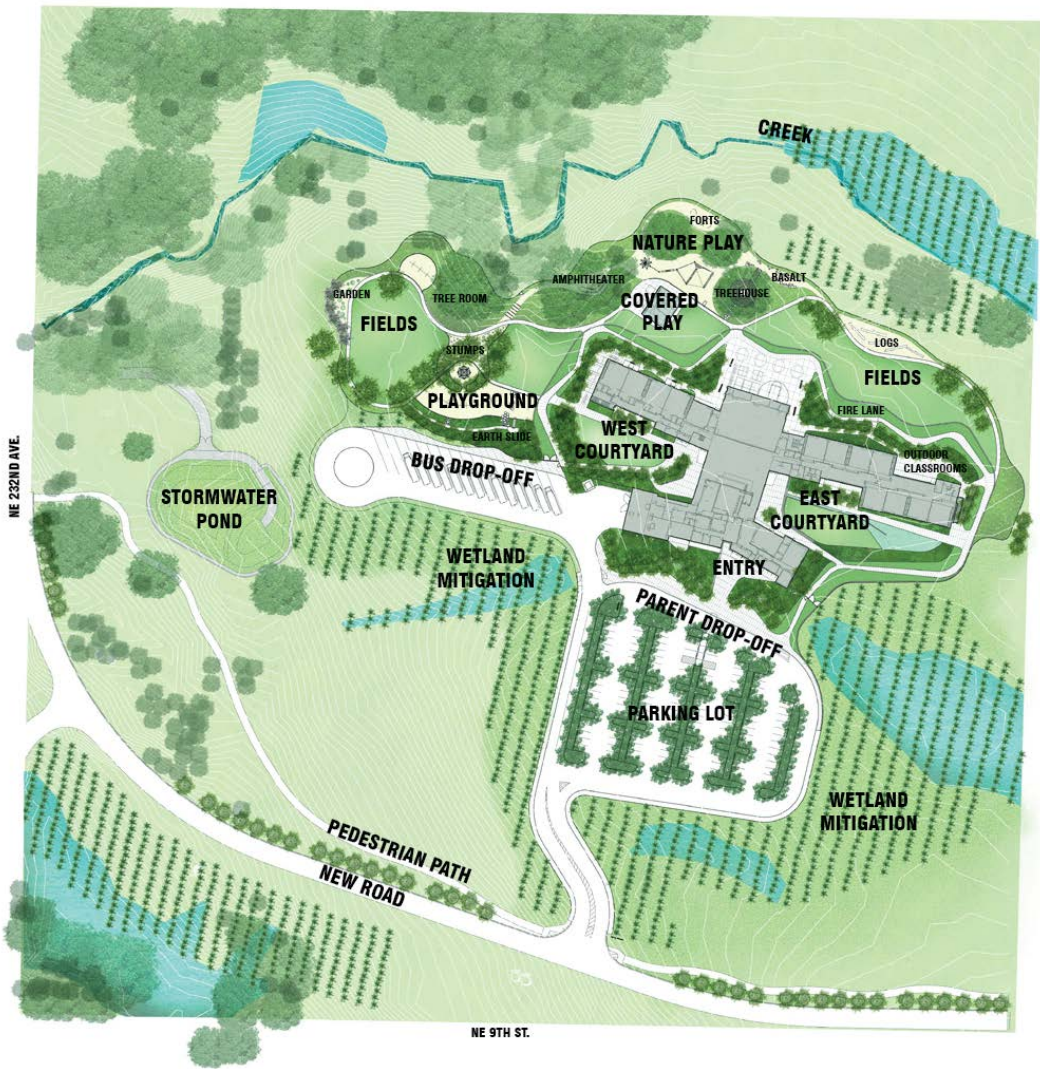
— FIBER REINFORCED HYBRID SLAT SIDING FP-1
& FP-2)
COLOR: NATURAL
SIZE: 6" HORIZONTAL SLAT

— POLYVINYL CHLORIDE (PVC) ROOFING
COLOR : DARK GREY

East Courtyard



Landscape Site Plan



View from East Courtyard



West Courtyard





concrete paving



engineered wood fiber (wood chips)



composite decking



grass pavers



stone slabs



basalt stones



steel wall



wood stumps



white oak - *quercus garryana*



california black oak- *quercus kelloggii*



pacific madrone - *arbutus menziesii*



vine maple - *acer cirratum*



ponderosa pine - *pinus ponderosa*



constellation dogwood - *cornus x 'runcan'*



bigleaf maple - *acer macrophyllum*



quaking aspen - *populus tremuloides*



katsura - *cercidiphyllum japonicum*



maidenhair tree - *ginkgo biloba*



northern spy apple - *malus domestica*



pin oak - *quercus muelenbergii*



privet honeysuckle - *Lonicera pileata*



sweetbox - *Sarcococca hookeriana*



lilyturf - *Liriope muscari* 'big blue'



fountain grass - *Pennisetum orientale*



creeping red fescue - *Festuca rubra*



perennial ryegrass - *Lolium perenne* var. *allstar*



oceanspray - *Symphoricarpos albus*



red oiser dogwood - *Cornus sericea*



elk blue rush - *Juncus patens*



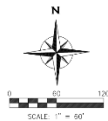
oregon iris - *Iris tenax*



slough sedge - *Carex obnupta*



wetland mitigation

[illegible]

1. SEE SITE DEMOLITION PLAN FOR TREE PROTECTION FENCING.
2. SEE SHEET C-001 FOR ALL GENERAL, GRADING, EROSION CONTROL, AND STORM NOTES.
3. THERE SHALL BE NO LAND-DISTURBING ACTIVITY IN ANY OF THE SIX EXISTING WETLANDS AT ANY TIME.
4. SEE LANDSCAPE ARCHITECT'S PLANS ("L" SHEETS) FOR GRADING OUTSIDE OF VEHICULAR PAVEMENT AREAS.
5. ALL GRADING ACTIVITIES WITHIN WETLAND BUFFERS SHALL HAVE MAX. 4:1 SLOPES.

LEGEND

- 
 EXISTING WETLAND
 CONSTRUCTION ENTRANCE
 RAIN GARDEN FACILITY
 SILT FENCE

OVERALL GRADING & DRAINAGE PLAN

Landscape Site Plan

