

mahlum

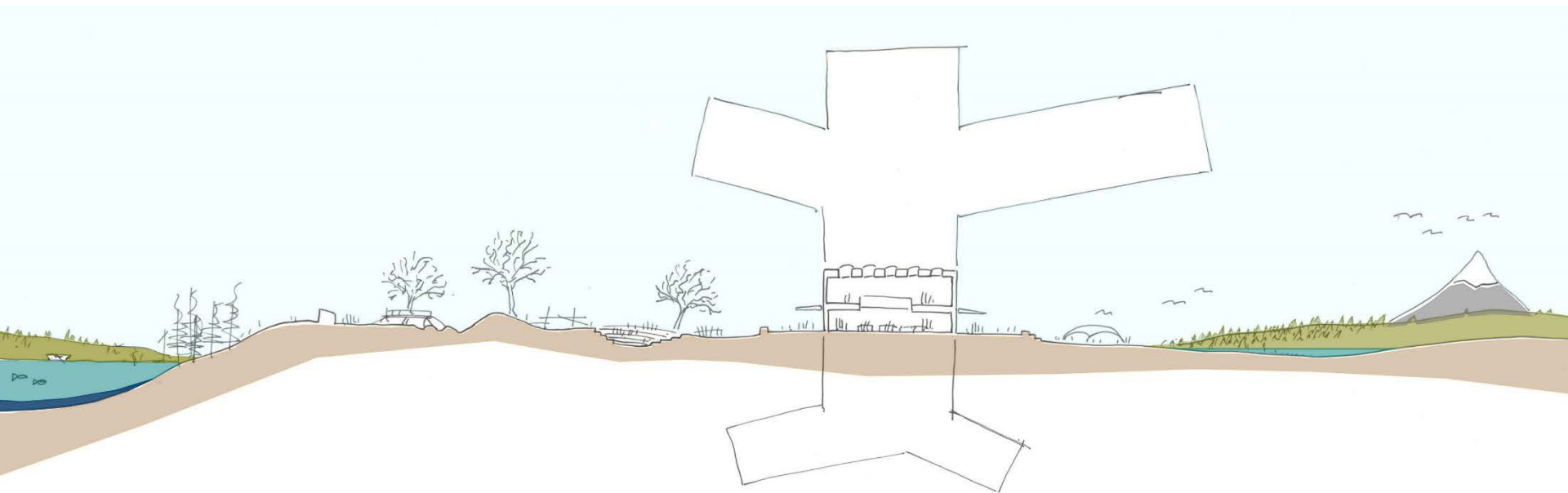
28 FEBRUARY 2017

# New Lacamas Heights ES, Camas School District

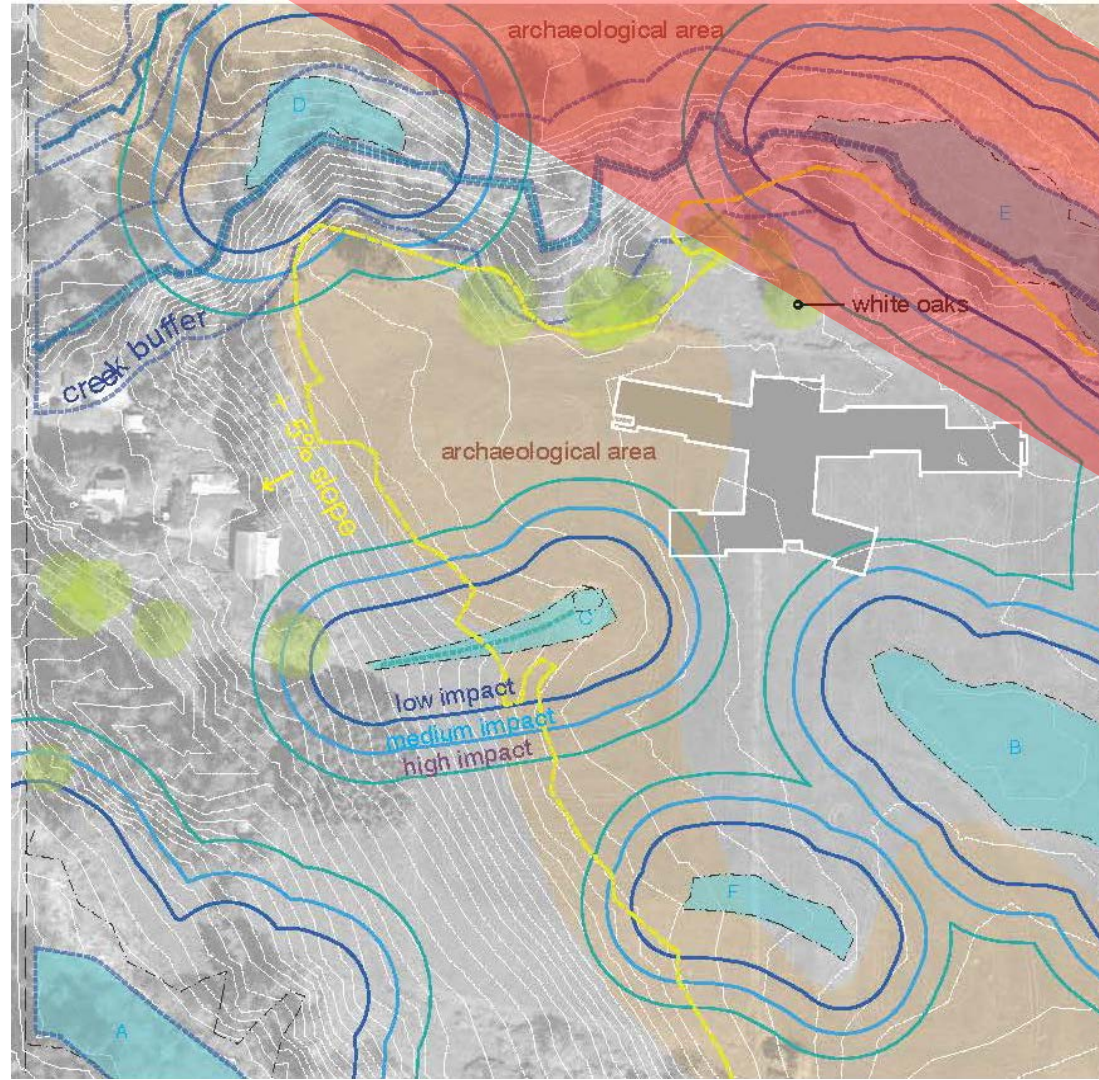


# A School in the Country

A collaborative K-5 learning environment that connects students to the natural environment and encourages curiosity

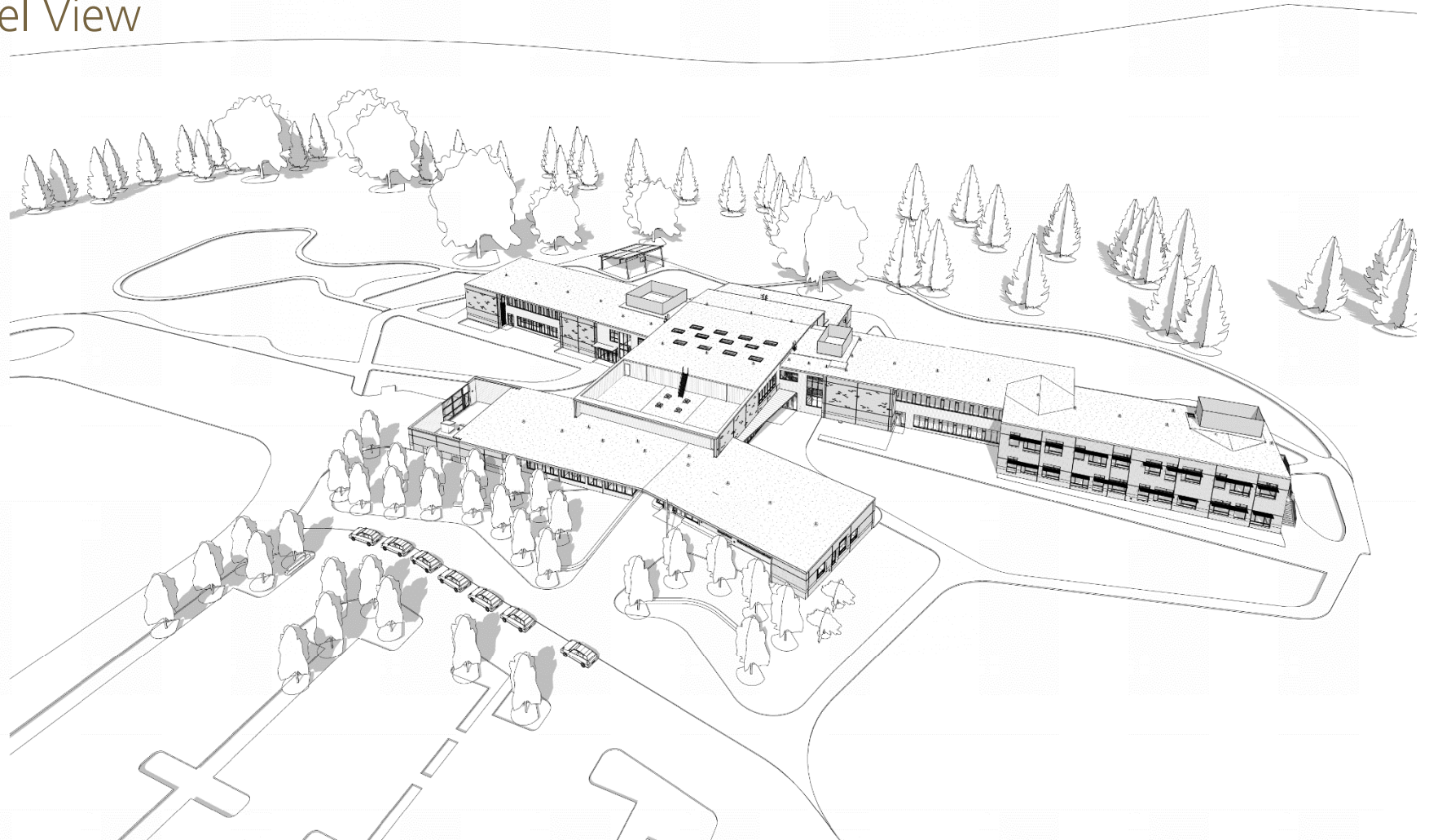


# Site Constraints

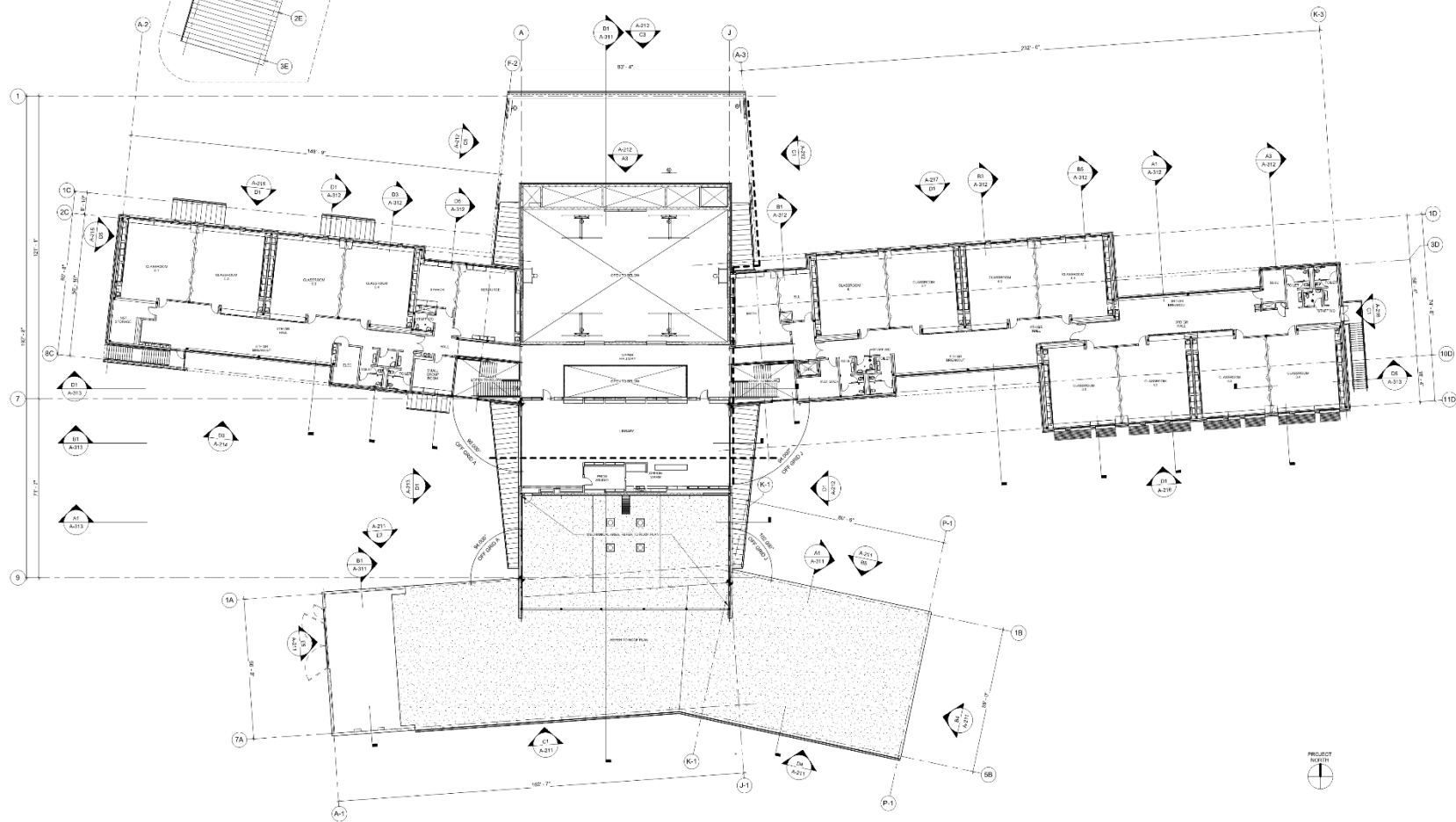




# Ariel View



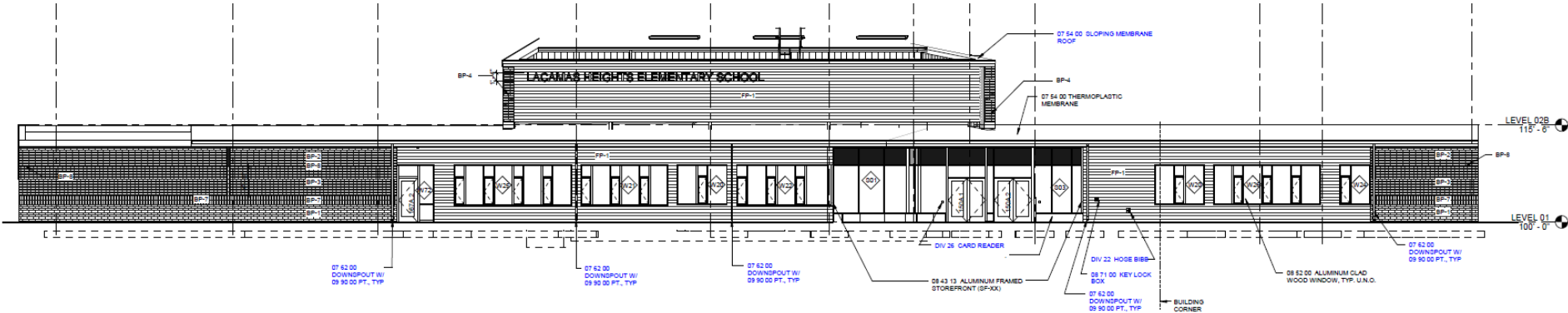




# Exterior view of Entry



# Materials



STOREFRONT DOORS (ACCENT COLOR)  
 COLOR: TERRA COTTA

STOREFRONT  
 ALUMINUM CLAD WOOD WINDOWS  
 METAL PANEL (MP-1&2)  
 MECHANICAL SCREENS  
 COLOR: DARK GREY

CONCRETE MASONRY UNIT (CMUV-1)  
 COLOR: CASTLE WHITE  
 SIZE: 8" TALL BLOCK

BRICK VENEER (BP-1 THROUGH BP-8)  
 COLOR: AUTUMN SANDS  
 SIZE: VARIES



FIBER REINFORCED HYBRID SLAT SIDING FP-1 & FP-2)  
 COLOR: NATURAL  
 SIZE: 6" HORIZONTAL SLAT

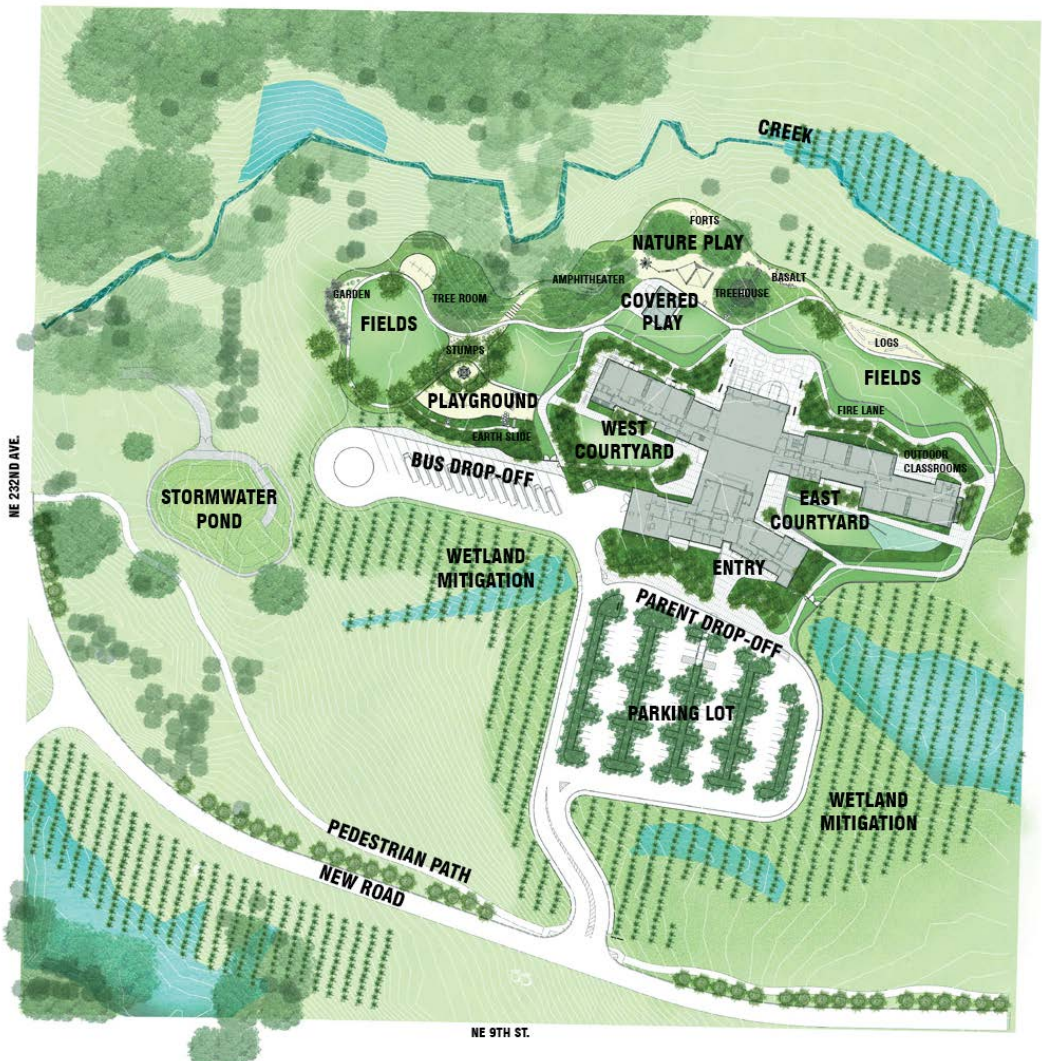
POLYVINYL CHLORIDE (PVC) ROOFING  
 COLOR : DARK GREY



# East Courtyard



# Landscape Site Plan





## View from East Courtyard



# West Courtyard







concrete paving



engineered wood fiber (wood chips)



composite decking



grass pavers



stone slabs



basalt stones



steel wall



wood stumps





white oak - *quercus garryana*



california black oak- *quercus kelloggii*



pacific madrone - *arbutus menziesii*



vine maple - *acer cirratum*



ponderosa pine - *pinus ponderosa*



constellation dogwood - *cornus x 'runcan'*



bigleaf maple - *acer macrophyllum*



quaking aspen - *populus tremuloides*



katsura - *cercidiphyllum japonicum*



maidenhair tree - *ginkgo biloba*



northern spy apple - *malus domestica*



pin oak - *quercus muehlenbergii*





privet honeysuckle - *Lonicera pileata*



sweetbox - *Sarcococca hookeriana*



lilyturf - *Liriope muscari* 'big blue'



fountain grass - *Pennisetum orientale*



creeping red fescue - *Festuca rubra*



perennial ryegrass - *Lolium perenne* var. allstar



oceanspray - *Symphoricarpos albus*



red oiser dogwood - *Cornus sericea*



elk blue rush - *Juncus patens*



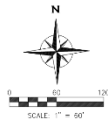
oregon iris - *Iris tenax*



slough sedge - *Carex obnupta*



wetland mitigation

[illegible]

1. SEE SITE DEMOLITION PLAN FOR TREE PROTECTION FENCING.
2. SEE SHEET C-001 FOR ALL GENERAL, GRADING, EROSION CONTROL, AND STORM NOTES.
3. THERE SHALL BE NO LAND-DISTURBING ACTIVITY IN ANY OF THE SIX EXISTING WETLANDS AT ANY TIME.
4. SEE LANDSCAPE ARCHITECT'S PLANS ("L" SHEETS) FOR GRADING OUTSIDE OF VEHICULAR PAVEMENT AREAS.
5. ALL GRADING ACTIVITIES WITHIN WETLAND BUFFERS SHALL HAVE MAX. 4:1 SLOPES.

LEGEND

- 
 EXISTING WETLAND  
 CONSTRUCTION ENTRANCE  
 RAIN GARDEN FACILITY  
 SILT FENCE

OVERALL GRADING &amp; DRAINAGE PLAN



# Landscape Site Plan

