

Guiding Principles:

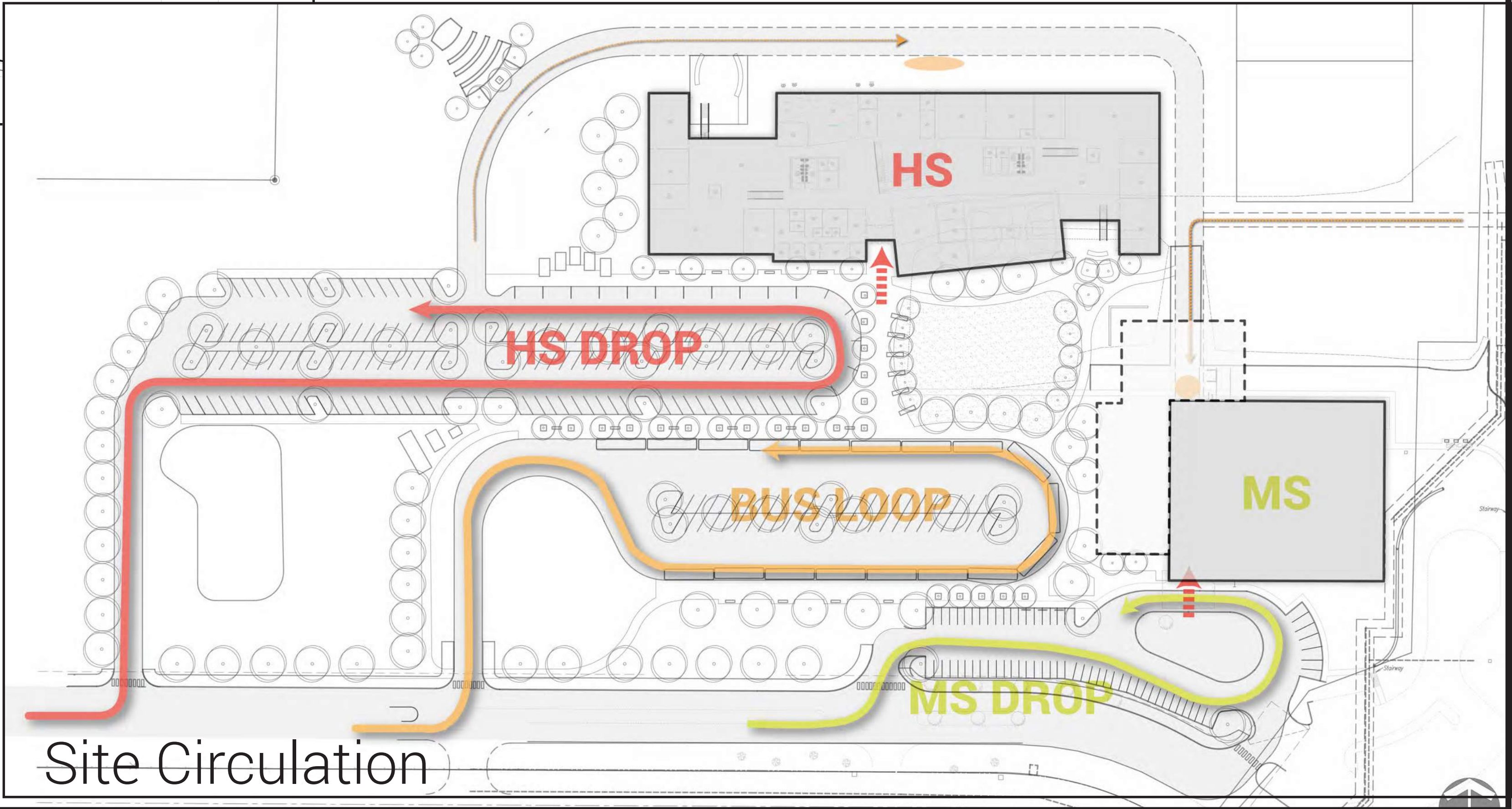
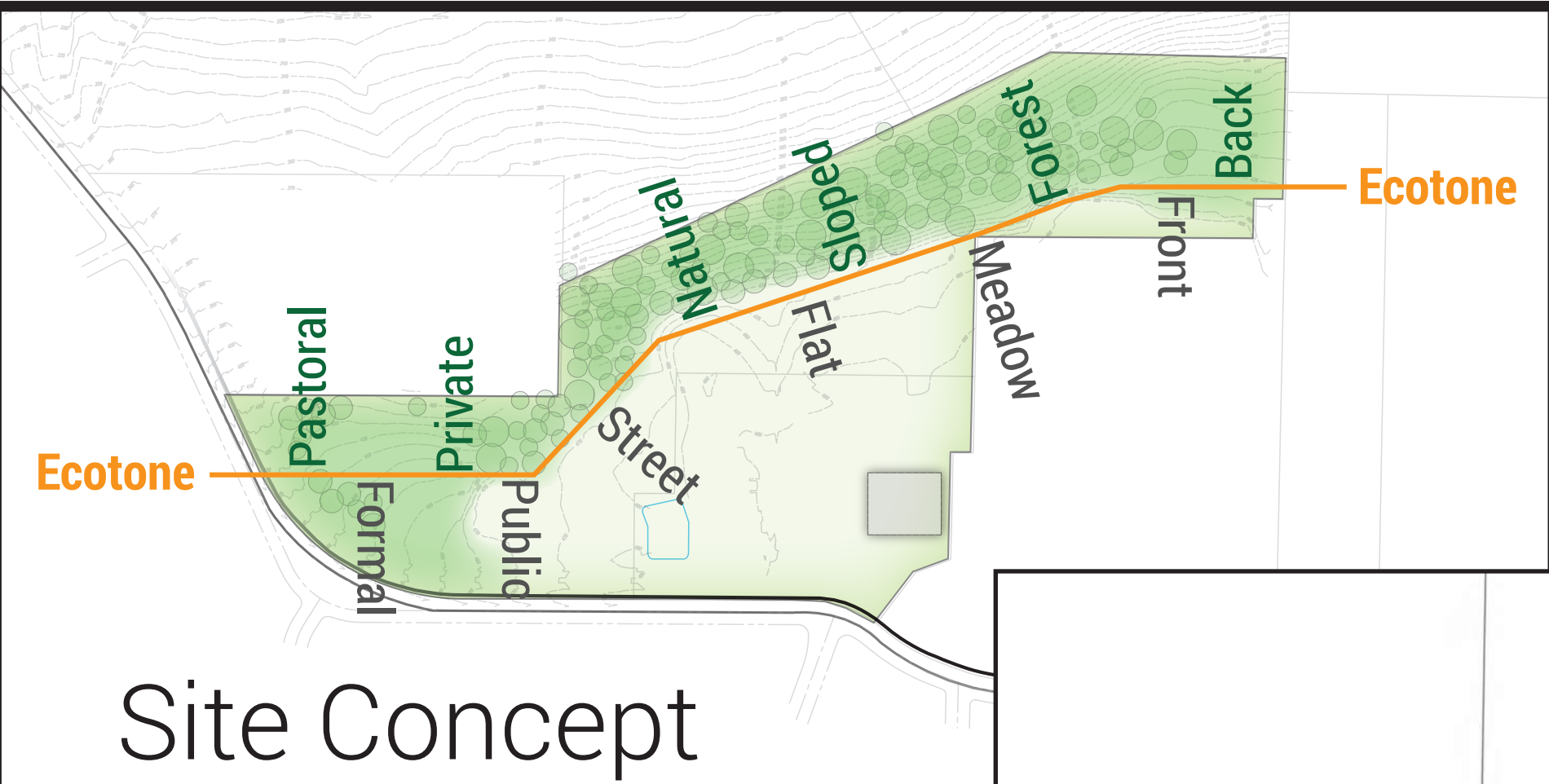
- Personalized Learning that's Engaging, Active, and Inspiring
- Collaboratively Designed Learning by Students and Teacher
- Flexible and Adaptable
- Contribution to Community

Design Evaluation Criteria to Consider:

- How the design supports the vision
- Value Added Design features

Major Themes:

- All spaces are learning spaces
- Highly visible, transparent, open
- Flexible, Adaptable & Multi-Use spaces – now/future
- Connection to Outdoors & Outdoor Learning spaces
- Presentation everywhere
- Active and Completed Projects on display
- Equipment and Furniture play key roles
- 2-way connection to the community
- One Heavy Fabrication and multiple Medium/Light Production Labs, with a separate Digital Lab
- Non-tradition PE --> Lifelong Fitness Exploration
- Spaces for individuals, small groups and large groups
- Efficient, Sustainable & Healthy Design
- Food brings people together



Site Plan

BASE BID

Student = 151
Staff = 93
Visitor = 24
ADA = 8
Total = 276

BASE BID + ADD ALT. LOT

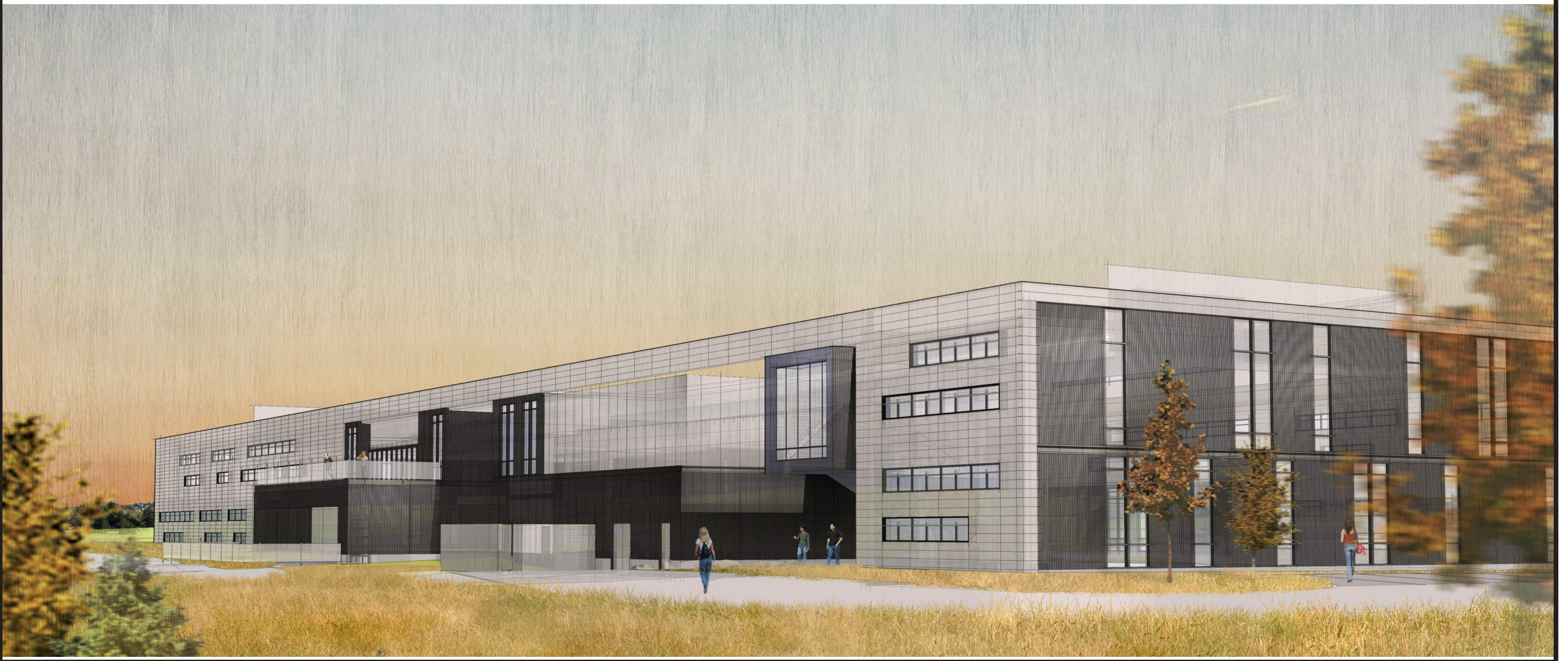
Student = 168
Staff = 110
Visitor = 24
ADA = 8
Total = 310



Perspective looking Northeast from Access Road



Perspective looking North from Middle School

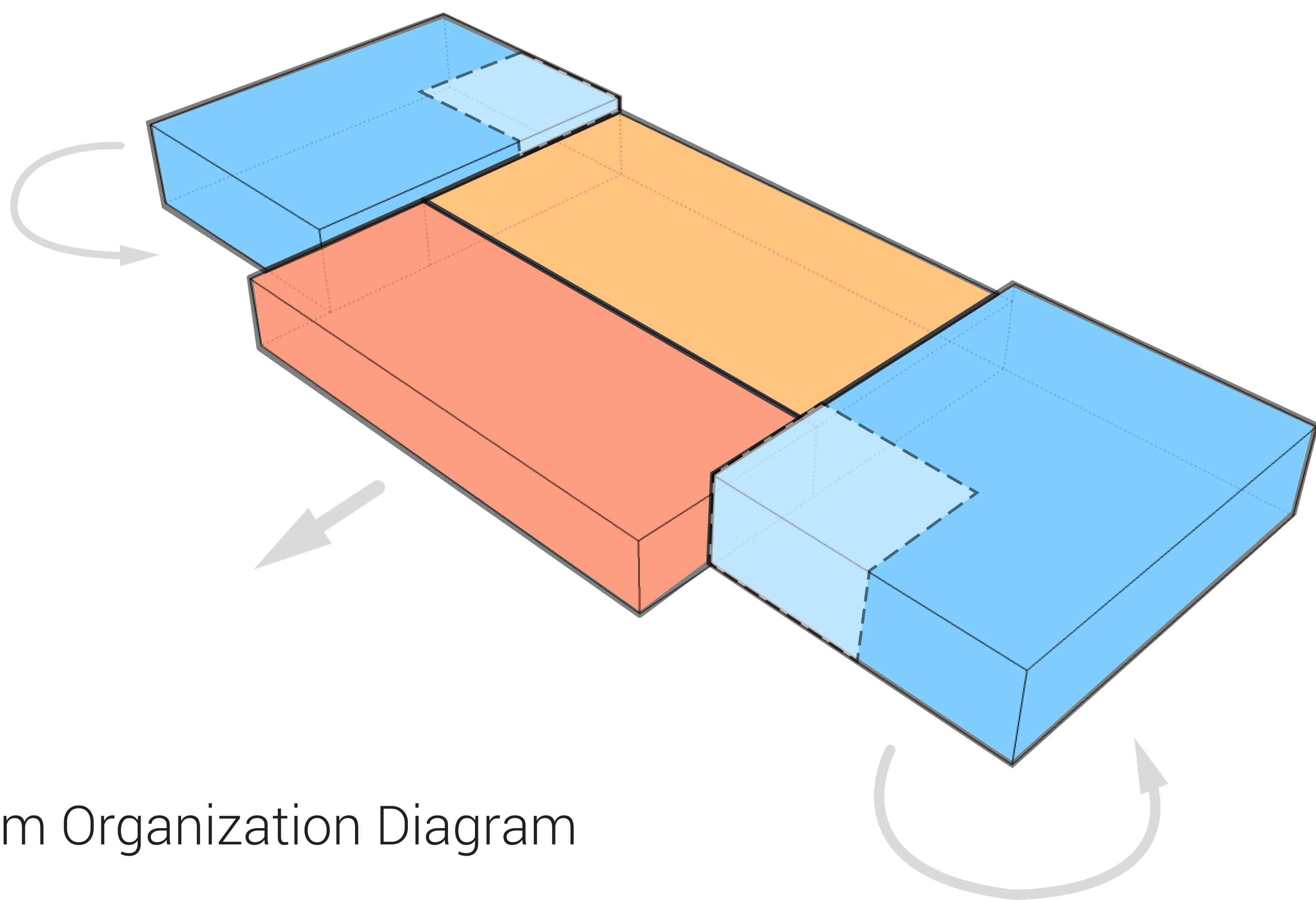


Perspective looking Southeast from Forest

Massing / Building Organization

EXTERIOR MATERIALS

- Glazing
- Concrete Panels
- Corrugated Metal
- Metal Panel
- Concrete



Floor Plans

PROGRAM ELEMENTS

- Administration
- HUB
- Flex Exhibition & Fitness
- Research Node
- FAB Lab
- R+D Pods
- Cores / Building Support

INTERIOR DESIGN


- Canvas/warehouse for Student Work
- Professional Workshop



OUTDOOR LEARNING

PROGRAM DESCRIPTION

- Amphitheater
- Covered Outdoor FAB Lab Work Area
- Covered Outdoor R + D Work Areas
- Learning Quad
- Play Fields

DLR Group

2017