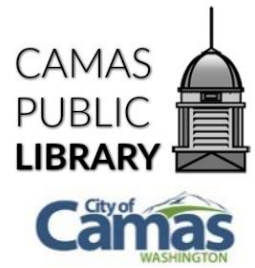


DIRECTOR'S REPORT

Library Board of Trustees

FEBRUARY 2017

PRESENTED AT THE MARCH 2017 MEETING



COMMUNITY CONNECTIONS



FAMILY LITERACY NIGHT

Youth Librarian Ellen Miles visited Dorothy Fox Elementary this month to participate in their Family Literacy Night. Our Mayor was there as well, reading to students. It was great to see such community teamwork in efforts for literacy!

SECOND STORY GALLERY

Students from Camas High School were the highlighted artists during February's exhibit titled "3 Printing Methods x 3 Art Voices". Another Camas High class will be back for the May exhibit.

STAFF DEVELOPMENT

VALENTINE'S DAY CELEBRATION

The staff engagement committee (also known as SMCK) was at it again on Valentine's Day with a heart-shaped pizza party, accompanied by chocolate fondue. It was a "love"ly time!

Webinars

- Karen Nicholson: *Spring YA Announcements*
- Karen Nicholson and Debbie Chevron: *Full Steam Ahead*
- Debbie Chevron: *Transform Your Children's Library into an Interactive STEAM Learning Environment*

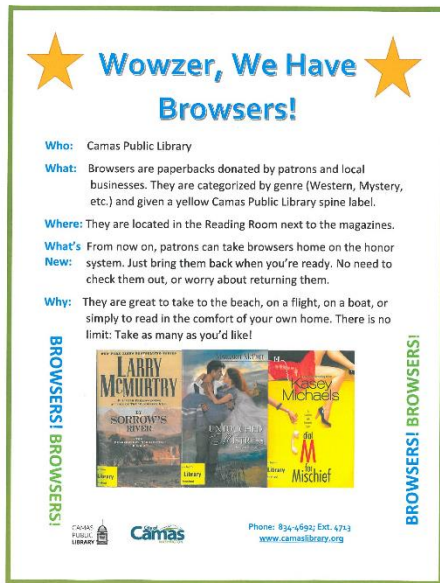
COLLECTIONS AND DISPLAYS

FEBRUARY DISPLAY

In honor of National Library Lovers' Month, we asked people why they love their library. Here's a sample of their responses:

- ♥ "Everyone who works here is so friendly and helpful."
- ♥ "Really good book options and really nice staff."
- ♥ "The Camas Library staff – they defy the image of 'government worker'."





BROWSERS

This month, we implemented a new process for our paperback browsing collection. Historically, the paperback collection has been curated based on donations alone. Our staff would select the best donations, affix RFID tags, barcodes, and Camas Public Library stickers to them, then catalog the books and shelve them. These used books tend to rotate through the collection quickly. In order to save money and staff time, we decided not to add RFID tags or barcodes to the donated paperbacks, and not to catalog them. We will have a volunteer affix the Camas Public Library sticker to them and maintain the collection. From now on, the collection will be entirely volunteer run with a “borrow, return, donate” philosophy—no library card required. In the past, we have circulated approximately 1,000 paperbacks from this collection per year. Without patrons officially checking them out, we are prepared for the small dip in annual circulation statistics, but feel it's worth it for all the staff time (5 hours per week) and money (2 cents per barcode sticker and 36 cents per RFID sticker) we are saving.

FRIENDS AND FOUNDATION OF THE CAMAS LIBRARY (FFCL)

FUNDRAISER

February kicked off the start of a new fundraising campaign, wherein patrons can buy new books for the Library by choosing a title on the tree (decorated with hearts for February by Trustee Julie Hill). Once a patron picks a heart off the tree (changing to shamrocks for March), staff will purchase the title written on the heart. February brought in \$125 for adult and children's books. The tree made its debut at the February book sale but will also have a home on the main floor of the Library. Thanks, FFCL!



PROGRAMS

BELOW ARE PHOTOS FROM FEBRUARY PROGRAMS.





Craft-O-Rama
Feb 2017



Fiber to Fabric February 2017



MAKE ME
VALENTINES
Feb 2017



PORTUGUESE STORYTIME February 2017



LOOKING AHEAD

- Friday, **March 3rd**: First Friday 5-8 p.m.
- Friday, **March 10th**: All-Staff Meeting 9a.m.
- Monday, **March 13th**: Second Story Gallery Board Meeting
- Tuesday, **March 21st**: Friends and Foundation Meeting 5:30 p.m.
- Thursday, **April 6th**: Board of Trustees meeting 6:30 p.m.

BY THE NUMBERS (STATISTICS)

In this section, a different area or number will be highlighted each month. The Library will publish quarterly statistics for circulation and programming numbers as it's easier to track trends over a longer time period than just one month. A brief discussion at the Board of Trustees meeting will accompany these quarterly statistics.

Each year the City's Finance Department reports certain numbers to the State Auditor. Among these are the number of items the Library added and deleted last year, as well as the number of our registered borrowers.

Below are two charts displaying these numbers. Camas is above the national average in registered library cards per capita. However, there are new people moving here every day and we are eager to let them know about our resources and services.

The second chart depicts the flow of materials in and out of the Library. Because shelf space is limited and books get aged and/or outdated, we must remove some from the collection as others come in. We are fortunate to receive so many quality donations from the community as well. In 2016, we: purchased 3,515 items; received 7,354 as donations (this includes generous monetary donations from our Friends and Foundation with which we purchased books for the collection); and deleted 5,868 items from the collection.

