



1411 13TH STREET  
HOOD RIVER, OREGON 97031  
TEL: 541-386-3322  
FAX: 541-386-2515  
WWW.KLEINASSOCINC.COM

ELM STREET DEVELOPMENT  
LANDSCAPE PLAN  
CAMAS, WASHINGTON

REVISIONS:		
NO.	DESCRIPTION	DATE
	XX-XX-XX	
	Layout Name	
	Initials	
	Initials	
	Initials	
	Initials	

NOVEMBER 2016

SHEET L1 OF L1

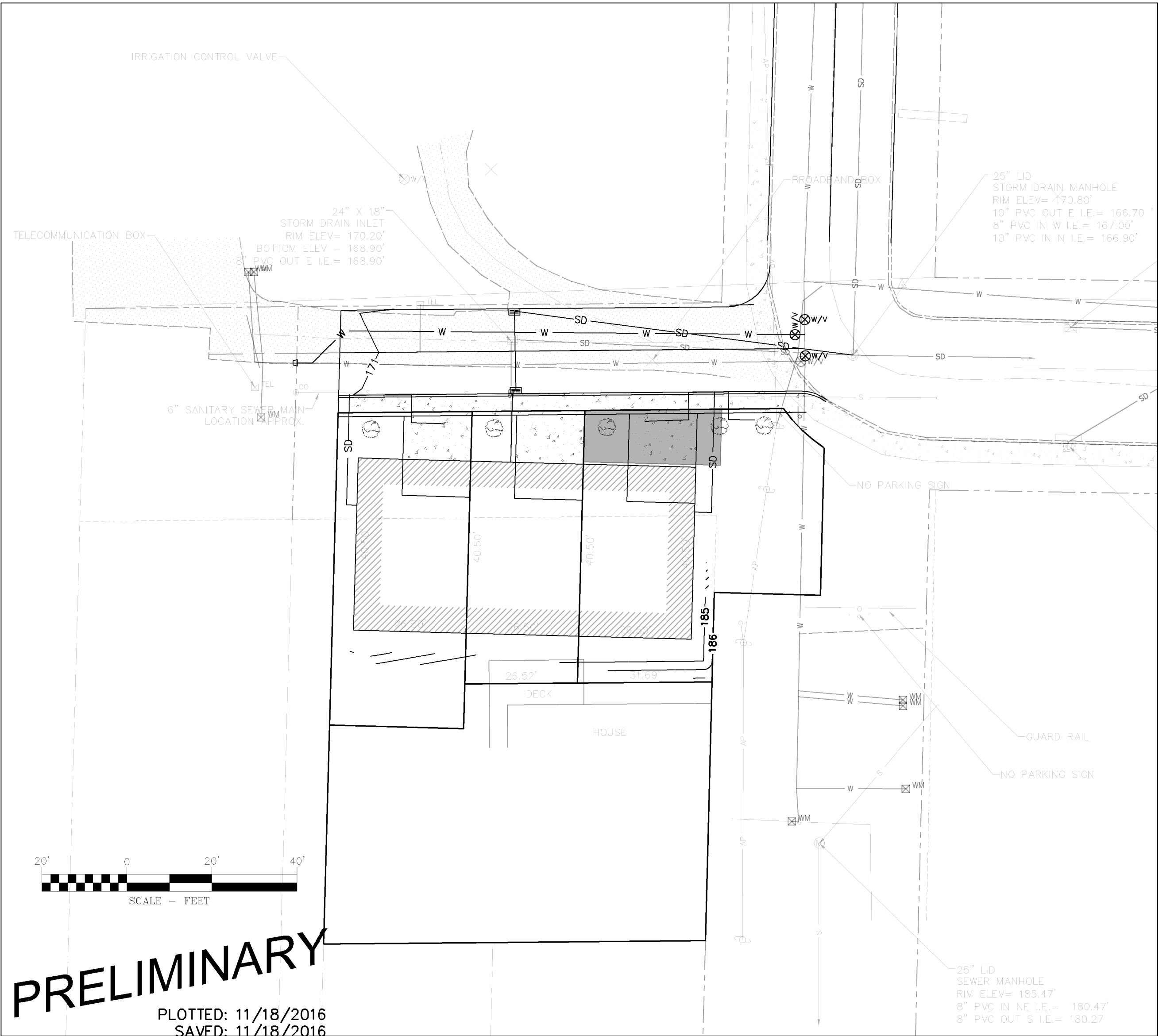
ELM STREET DEVELOPMENT  
PRELIMINARY GRADING PLAN

LOCATED AT 827 NW ELM STREET  
CITY OF CAMAS, STATE OF WASHINGTON

LEGEND	
	CONTOUR EXISTING
	CONTOUR PROPOSED
	EDGE OF ASPHALT
	CURB AND GUTTER
	EDGE OF GRAVEL
	WATER MAIN
	WATER SERVICE
	SANITARY SEWER MAIN
	SANITARY SEWER SERVICE
	STORM DRAIN
	AERIAL POWER LINE
	BURIED ELECTRIC LINE
	STORM DRAIN INLET
	POWER POLE
	GUY WIRE
	LIGHT POLE
	ELECTRIC PEDESTAL
	ELECTRIC METER
	TELEPHONE PEDESTAL
	CABLE TELEVISION PEDESTAL
	GAS MAIN VALVE
	MAIL BOX
	SGN
	AT AERIAL TELEPHONE LINE
	T BURIED TELEPHONE LINE
	FO BURIED FIBER OPTIC
	ATV AERIAL CABLE TELEVISION
	TV BURIED CABLE TELEVISION
	G GAS MAIN
	X FENCE
	Irrigation Ditch
	Stormwater Flow Direction
	Water Valve
	Fire Hydrant
	Blow Off
	Well
	Water Meter
	Water Reducer
	Sanitary Sewer Manhole
	Sanitary Sewer Cleanout
	Grease Trap Manhole
	Storm Drain Manhole
	Roof Drain Sump
	Drainage Sump

LANDSCAPE NOTES

1. PLANT SHRUBS NATIVE TO THE CITY OF CAMAS AND SURROUNDING AREA. SHRUBS TO ASSIST WITH SCREENING DRIVEWAYS.
2. LANDSCAPING CONTRACTOR TO ADJUST LOCATION OF SHRUBS IF UTILITIES MOVE.
3. CONTRACTOR TO REMOVE TREES WITHIN THE BUILDING FOOTPRINT AND ANY TREES NECESSARY FOR EXCAVATION/CONSTRUCTION OF THE STRUCTURE AND DRIVEWAYS.



PRELIMINARY

PLOTTED: 11/18/2016  
SAVED: 11/18/2016

THIS PLAN SHALL BE AN AMENDMENT TO THE SHORT PLAT APPLICATION  
SUBMITTED WITH THE CITY OF CAMAS IN SEPTEMBER 2016.