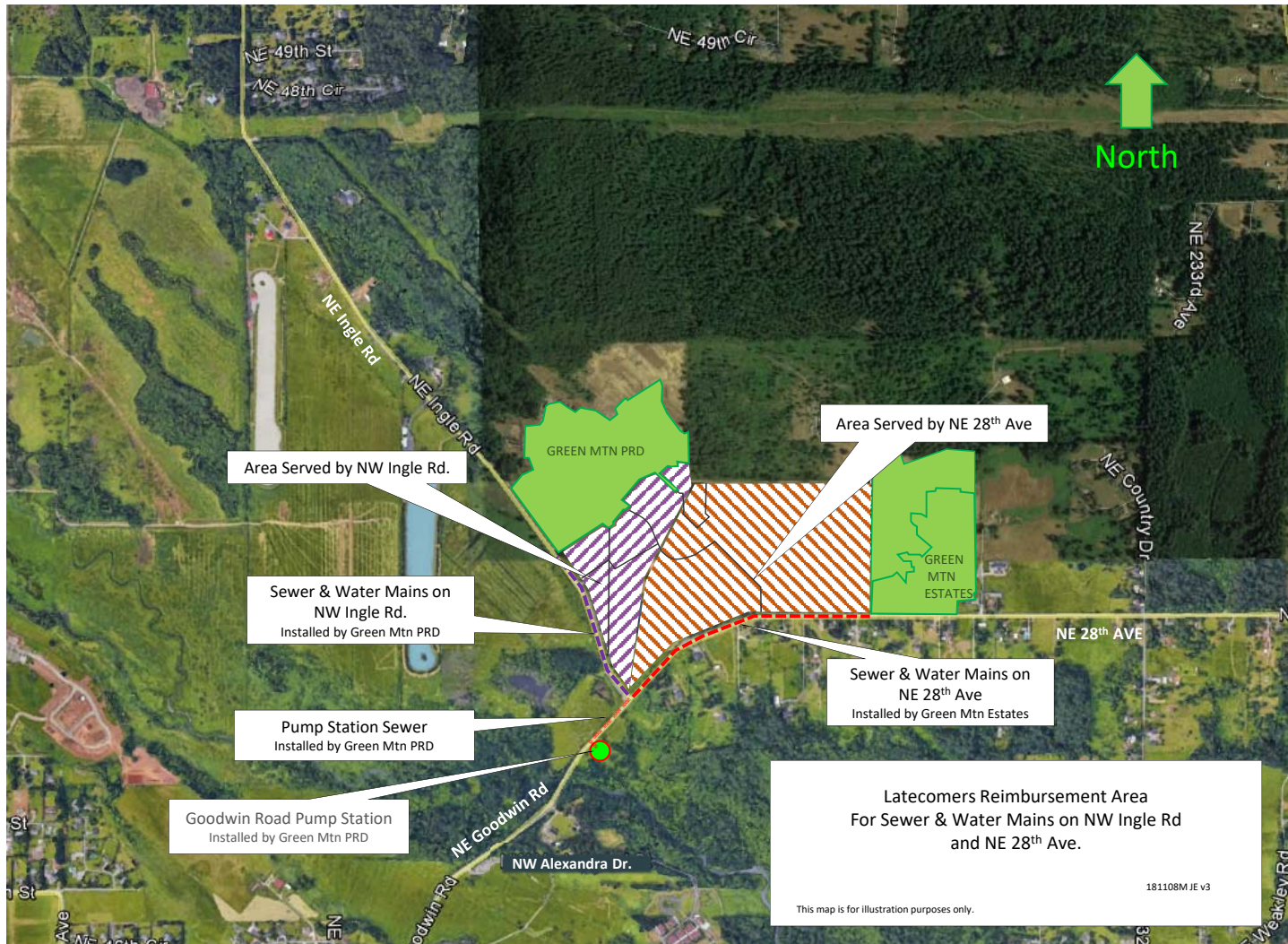


Goodwin Road Pump Station Latecomers
Reimbursement Area

This map is for illustration purposes only.

181108M JE V3



Sample Calculated Costs

Improvement	Unit Cost*	ERU**
Goodwin Pump Station	N/A	\$534
Ingle Road Water Main	\$60	\$300
Ingle Road Sewer Main	\$140	\$700
28th Street Water Main	\$83	\$415
28th Street Sewer Main	\$85	\$425



Unit Cost = Cost per Lineal Foot of Road frontage* (Unit Costs are approximated)

ERU = Equivalent Residential Unit** (Assumes 1,000 Lineal Feet of Road Frontage and 200 Lots)

These calculations are for illustrative purposes only