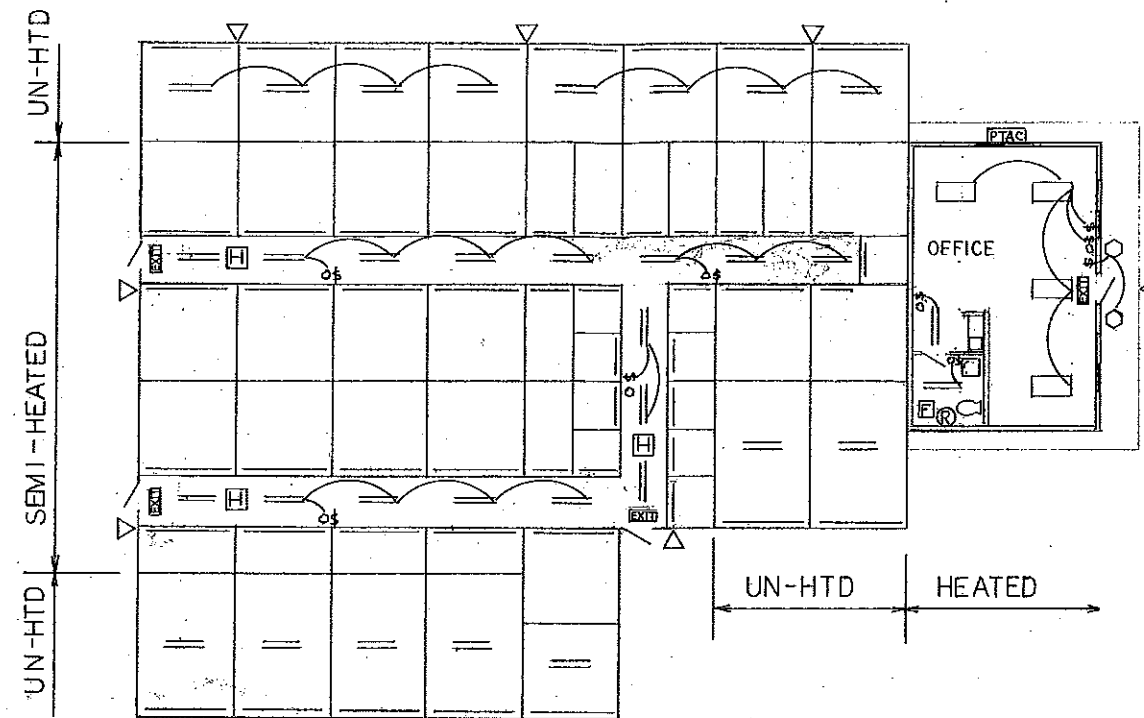
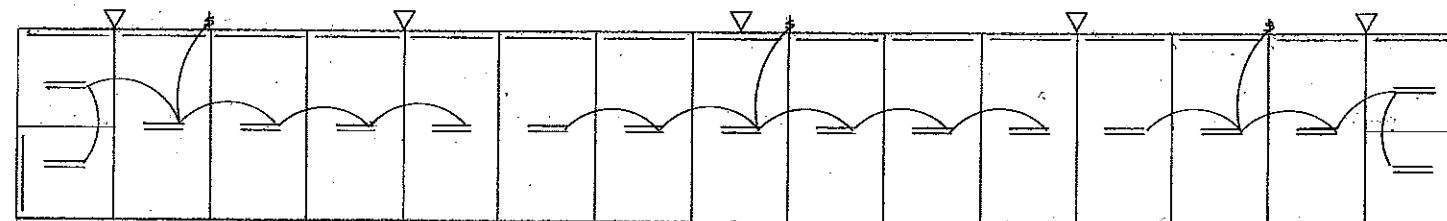


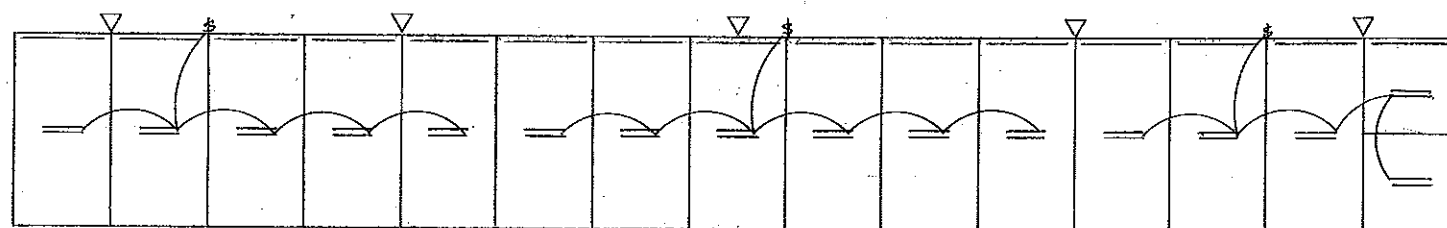
BUILDING NO. 4



BUILDING NO. 3



BUILDING NO. 5 UN-HEATED



BUILDING NO. 6 UN-HEATED

NOTES:

- Office Area**
 - Heated with PTAC packaged terminal air conditioner heat pump, Model No. PTHC 070-1-E-A, or equal.
 - Restroom heated with minimum capacity electric resistance wall Heater King Model Nos. LPW 2445, PAW 2422, or equal.
- Office Insulation**
 - Perimeter walls R-21 in 24" o.c. 6" metal stud cavities.
 - Ceiling has R-19 between joists and R-32 continuous over top.
 - Exterior foundation, R-10 rigid polystyrene down to bottom of footing and out (total of 24").
 - Office floors U = 0.15.
- Windows**
 - All glazing to be 1/8" double glazed clear glass or better, 1/2" argon filled, U = 0.30, e = 0.1, SHGC = 0.35, vinyl framed.
 - Glazing in doors and glazing in hazardous areas to be safety glazing (wire mesh not allowed).
- Ventilation**
 - Provide 140 CFM outside makeup air with damper.
- Water Heater**
 - Electric point of use < or = 12 kw, energy factor > or = 0.93 to .00132 V.
- Office Lighting**
 - Install at least one toggle switch to control lights in each room.
 - Occupancy sensors for each office and restroom.
 - Exterior lighting controlled by programmable timer or photocell.
 - Any recessed can lighting to be IC rated.
- Window Schedule**

Location	Size	Type	Qty
Office	6'0" x 4'0"	XO	3
- Door Schedule (All Insulated)**

Location	Size	Type	Qty
Office	3'0" x 7'0"	Storefront door	1
- Warehouse Lighting**
 - Install one twistlock timer switch to control up to six twin lamp fluorescent fixtures.
 - One fixture at hallway exits to be on during business hours.
 - With astronomical timer control.
 - Exterior lighting controlled by programmable timer or photocell.
 - Any recessed can lighting to be IC rated.
- Warehouse Heating**
 - Ceiling mount King Ptc-a watt Model KBP 1230, 2406, or equal.
- Miscellaneous**
 - Identification mark to be applied to all insulation materials.
 - Fenestration products labeled with U-factor, SHGC, VT and leakage rating.
 - Caulk external openings using non-hardening compound.
 - Finish all changes in exterior walls and exterior openings.
 - Storage areas include un-heated and semi-heated spaces.
 - Not equipped with an automatic fire sprinkler system.

LEGEND:

- OFFICE**
 - Ceiling Light, surface mount or recessed four lamp, 4' fluorescent strip fixture with reflector and F40T8 32 watt lamps, Lithonia with GESB electronic ballast or equal. Occupancy sensors in office and restroom, 30 min. max. with manual over ride. Daylight sensor on half of office area lamps.
- STORAGE AREAS**
 - ▬ Ceiling Light, surface mount 4' fluorescent strip fixture with reflector, twin lamp F40T8, 32 watt, Lithonia with GESB electronic ballast or equal.
 - ▬ Hallway lamps w/ occupancy sensor switch, 30 min. max. with manual over ride.
 - One fixture at each hallway exit to remain on during business hours
- BUILDING FACADE**
 - △ Cutoff Wall Pack, Atlas WLSG 27 watt LED shielded fixture or equal, with photo sensor or astronomical programmable timer, mounted ~ 8' above ground.
- ENTRY LIGHT**
 - Single lamp LED entry light, 22 watt with photo sensor or astronomical timer with over ride.
- EXIT LIGHT FIXTURE**
 - With battery backup, 5 watts maximum.
- H** King Ptc-a-watt Ceiling mount electric resistance heater 2,850 watt, Model No. KBP 1230, 2406, or equal Set at 1,900 watts.
- PTAC** Trane PTAC packaged terminal air conditioner heat pump, Model No. PTHC 070-1-E-A, or equal.
- R** King wall heater Model Nos. LPW 2445, PAW 2422, or equal.
- F** EXHAUST FAN 110 CFM

MODULAR MINI STORAGE
11105 SW INDUSTRIAL WAY
TUALATIN, OR 97062
(503) 692-3532

ONE STOP MINI STORAGE
3444 SE 2ND AVENUE
CAMAS, WASHINGTON

SCALE 1" = 10'	DRAWN BY T.W.
DATE 10/21/15	REVISED
INTERIOR & EXTERIOR LIGHTING PLANS	

DRAWING NO. **L1**