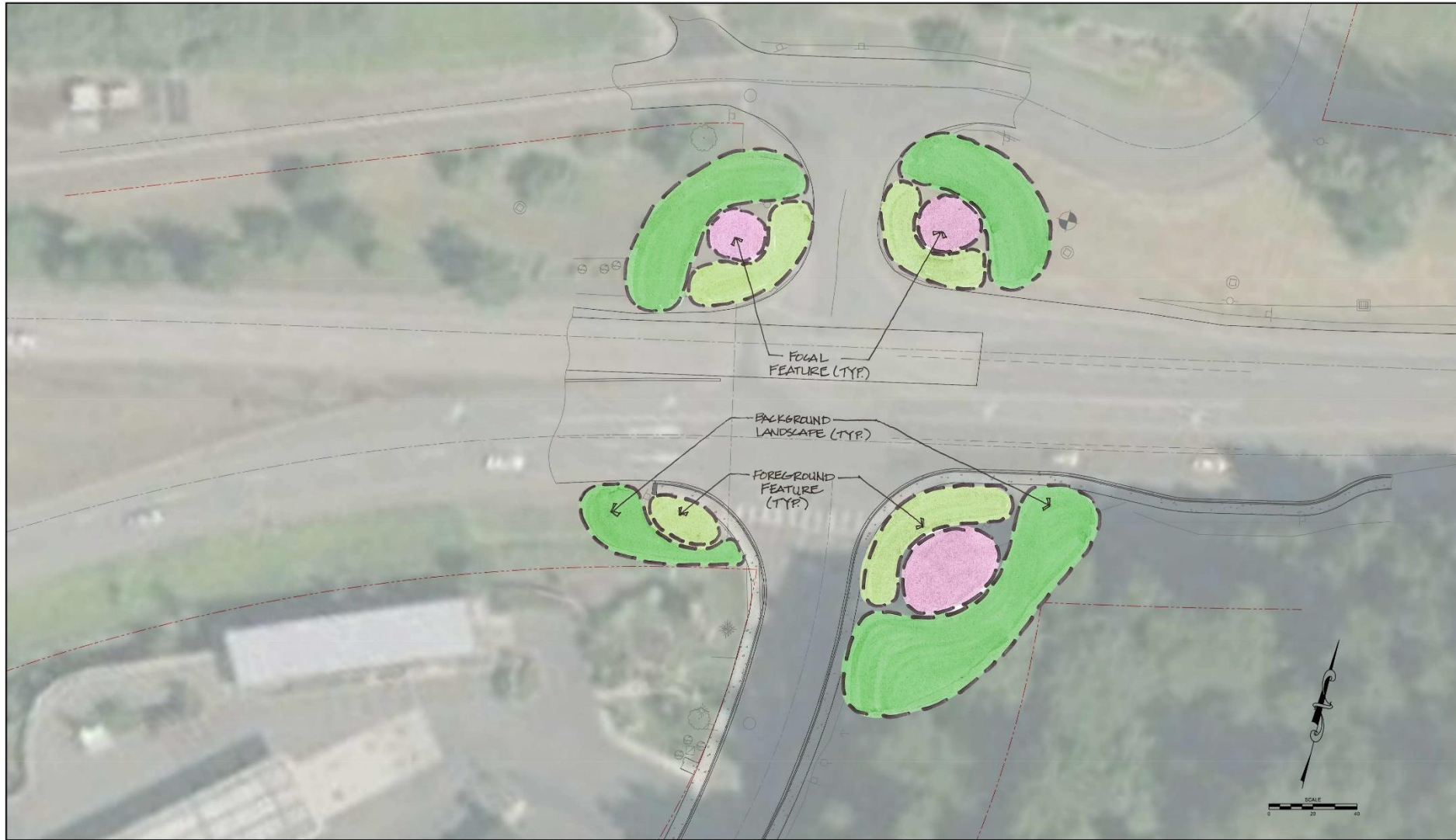


City of Camas

NW 6th and Norwood Intersection Options

Existing Intersection





NW 6TH AND NORWOOD - SIGNALIZED INTERSECTION LAYOUT

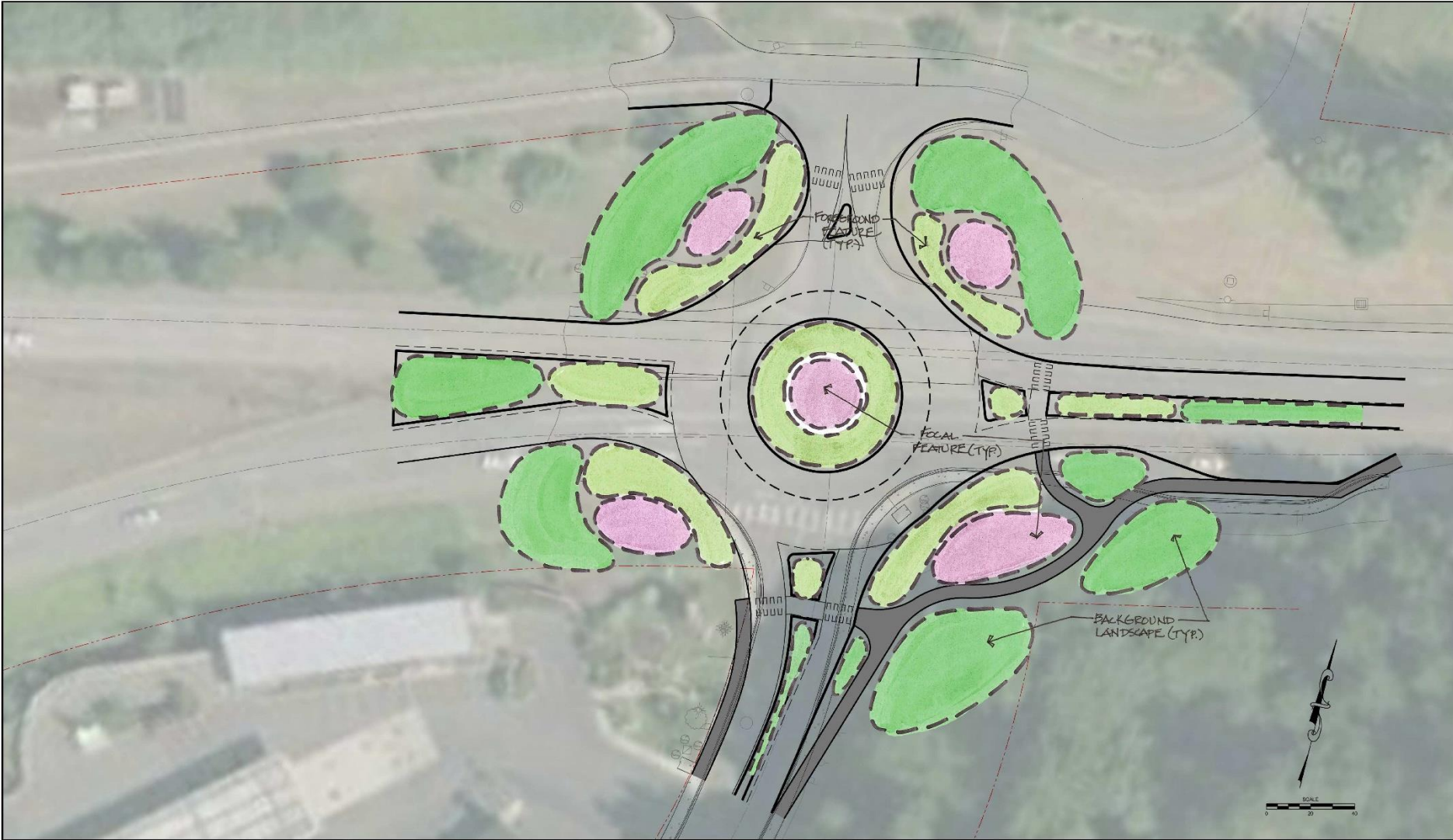
Signalized Intersection

- Construction Cost - \$300,000
- Design/Construction Support - \$60,000
- Signal Total - \$360,000

Optional

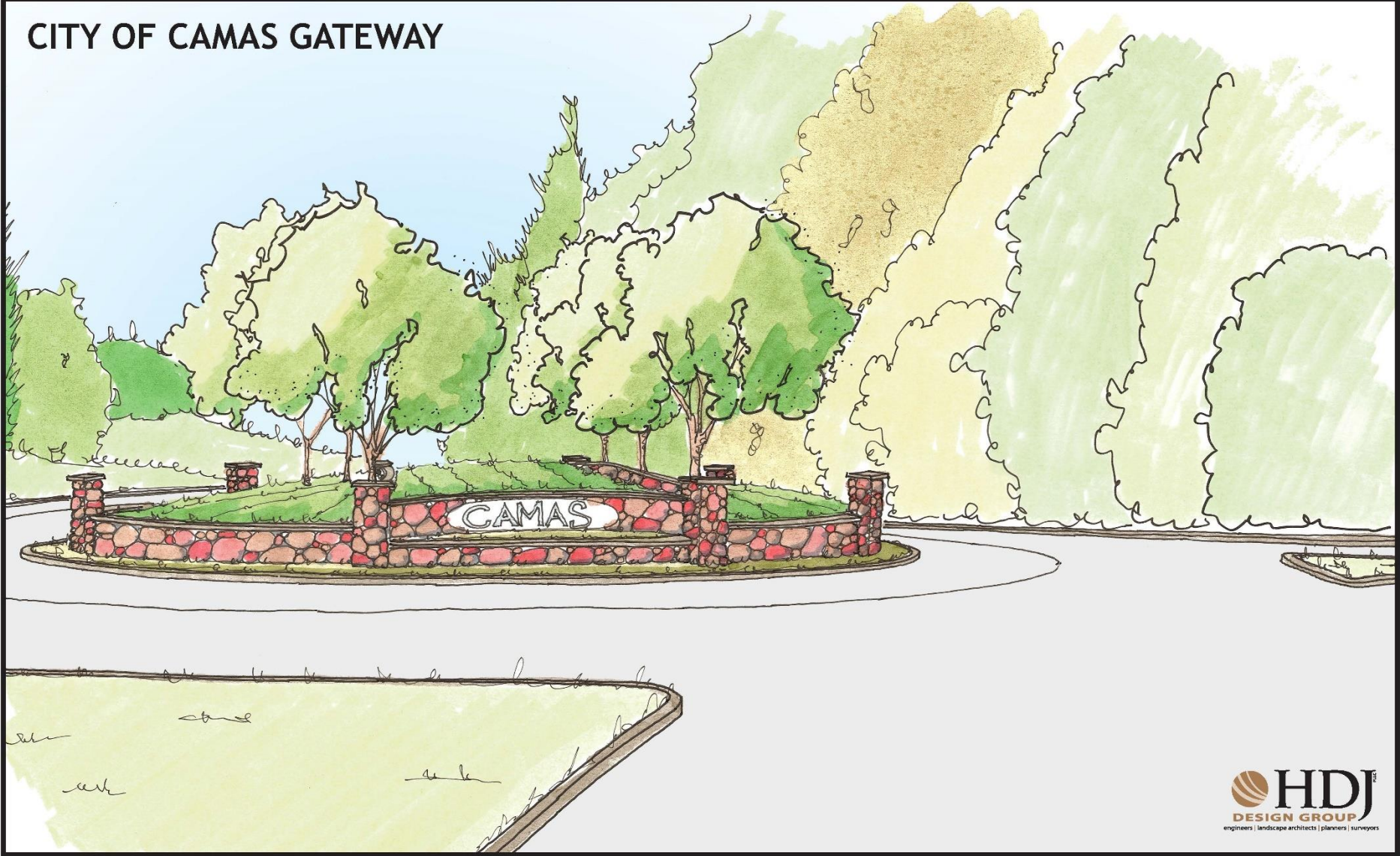
- Gateway Feature Construction - \$150,000
- Design/Construction Support - \$20,000
- Signalized Gateway Total - \$170,000

- Signal Grand Total - \$530,000



**NW 6TH AND NORWOOD -
POTENTIAL ROUNDABOUT LAYOUT**

CITY OF CAMAS GATEWAY



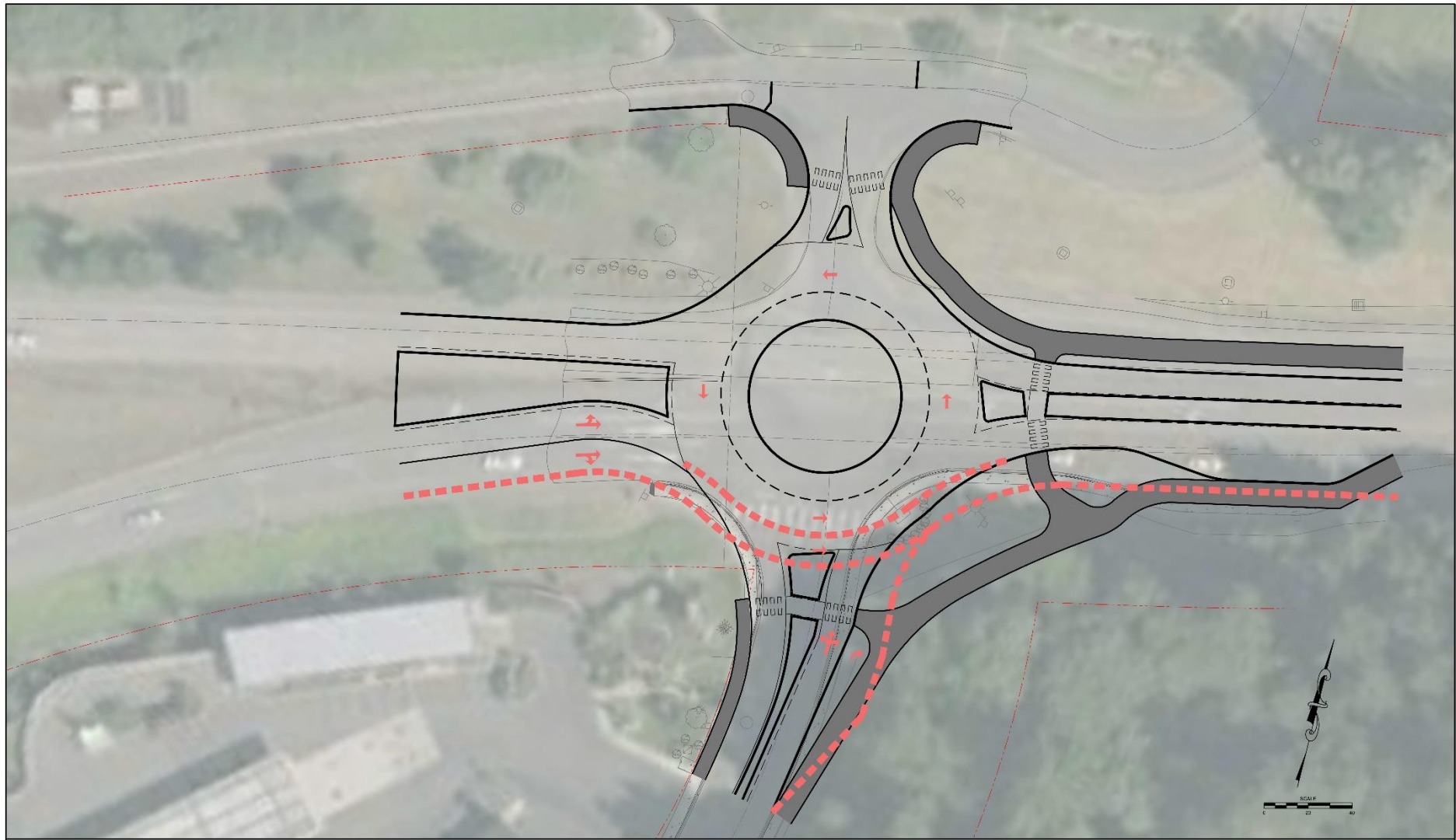
Roundabout Intersection

- Construction Cost - \$975,000
- Design/Construction Support - \$150,000
- Roundabout Total - \$1,125,000

Optional

- Gateway Feature Construction - \$325,000
- Design/Construction Support - \$50,000
- Roundabout Gateway Total - \$375,000

- Roundabout Grand Total - \$1,500,000



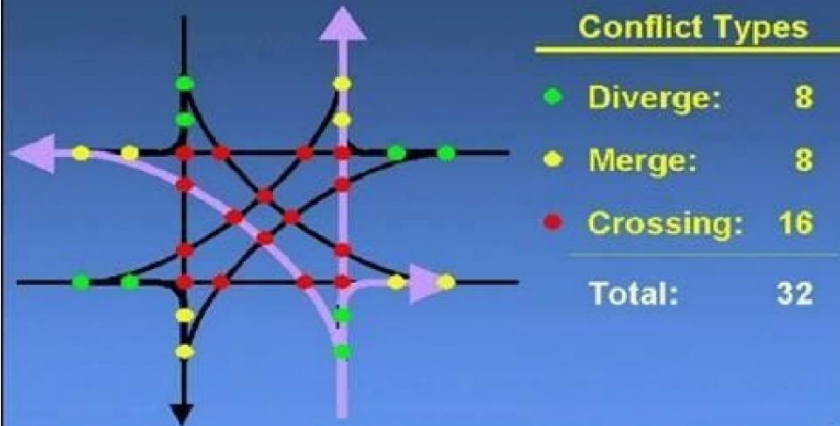
NW 6TH AND NORWOOD - POTENTIAL ROUNDABOUT LAYOUT

Safety

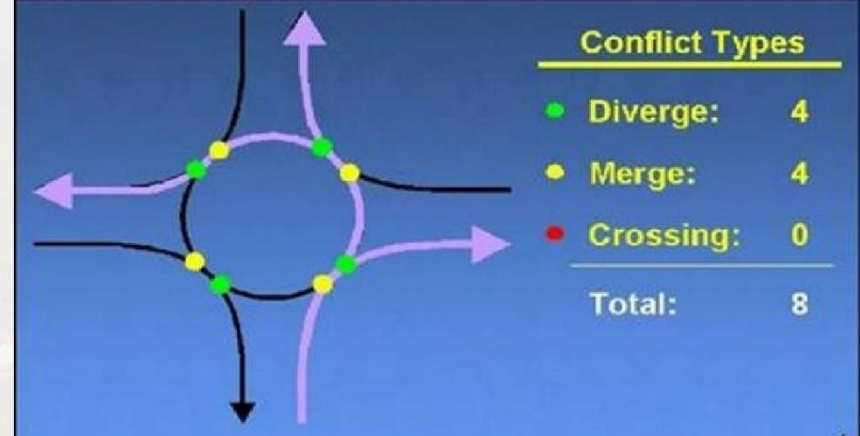
Signal

Roundabout

Vehicle conflict points: Conventional intersection

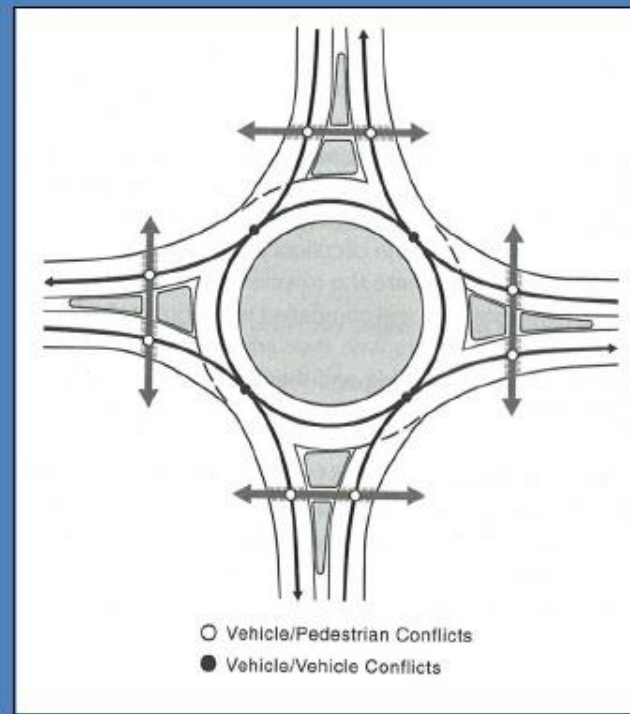
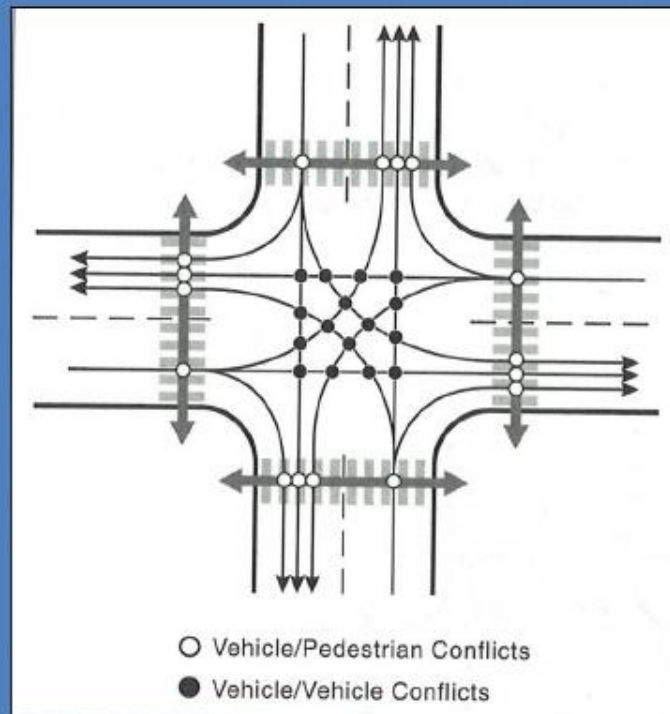


Vehicle conflict points: Roundabout



SAFETY

- Roundabouts reduce the number of vehicle to pedestrian conflicts
- 8 conflict points in Roundabout vs. 16 conflict points in a signalized intersection



Roundabout Benefits

Safety

- Reduce Total Crashes by 35% and Injury Crashes by 76%
- Traffic Calming Effect
- Pedestrian safety:
 - Reduced Speeds
 - Focus on one traffic stream
 - Refuge Island

Operations

- Lower Overall Delay
- Improves Access
- Lower Operating Costs
- Lower Maintenance Costs
- Always Works (*Power Outage*)

Roundabout Benefits

Environmental Factors

- Less Noise
- Less Fuel Consumption
- Better Air Quality
- Less Pavement

Land Use and Aesthetics

- Provides Transition
- Gateway Opportunities
- Improved Access to Businesses and Neighborhoods

CITY OF CAMAS GATEWAY

