

# Draft Urban Tree Program

Public Hearing

May 15, 2018

*"Camas appreciates and remains good stewards of the environment by preserving trees and natural areas."*

## Camas Citizens, Camas 2035 Comprehensive Plan

- Scope of Grant Project
- Deep Dive - Olympia
- Proposed Changes
  - Street Tree Permit
  - Park & Open Space Trees
  - Repeal Ch. 18.31
  - Add tree preservation to Ch. 18.13 Landscaping
  - Amend Fines and Fees for tree removal (permitted and illegal)

# Camas Citizens asked for more tree protection

## Trees are Public Assets

- 15% increase in home values
- Cleaner water and fewer water treatment facilities
- Cleaner air / carbon sequestration
- Reduced levels of stress, anxiety, crime
- Cooler streets, homes, cities



# Scope of Work

- Research
  - Current Zoning Ordinance Diagnosis
  - Comprehensive Plan
  - Stakeholder Interviews
  - Ad Hoc Committee
- Community Survey
- Camas Days
- Workshops with City Council
- Workshops with Planning Commission



# Camas Urban Tree Program

It will be a new program, not a singular code change. The tree program touches every city department, and responds to tree protection concerns/questions within all of the following categories:

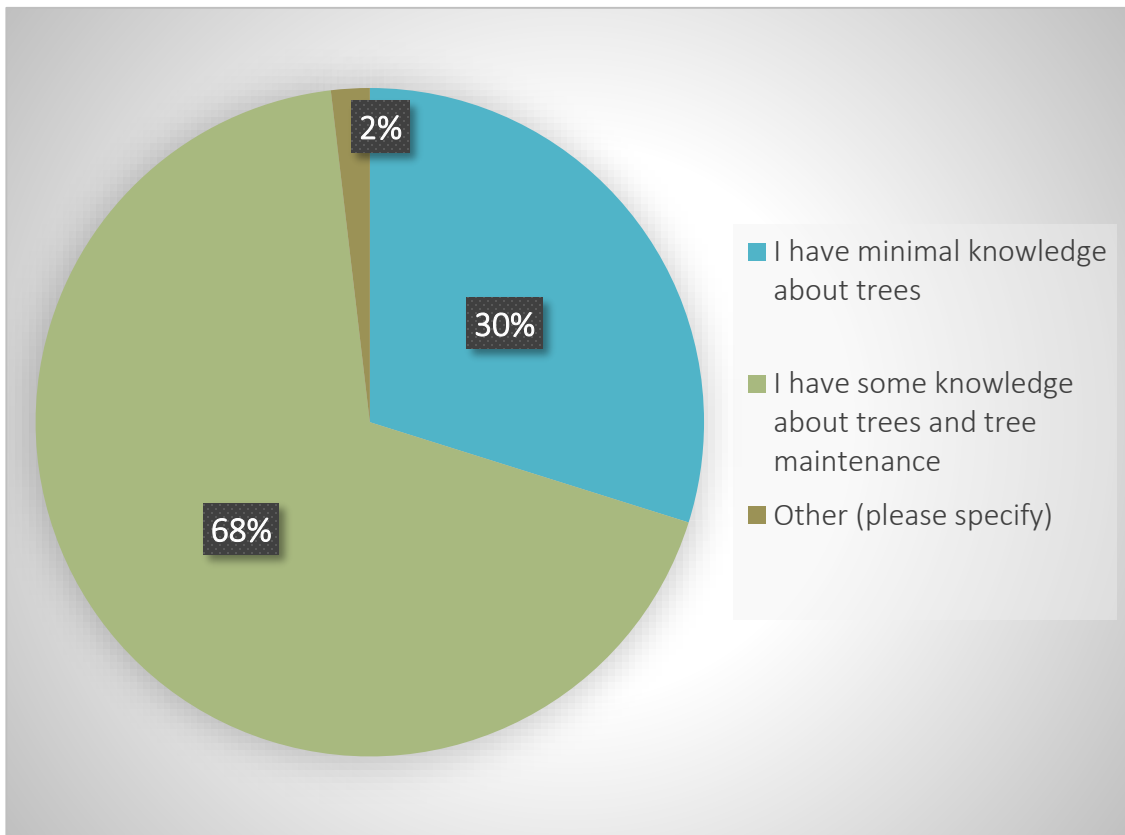
- ❖ Critical Area Trees
- ❖ Trees within Parks and Open Spaces
- ❖ Street Trees / Public Trees
- ❖ Tree Preservation During Land Development
- ❖ Fees and Fines



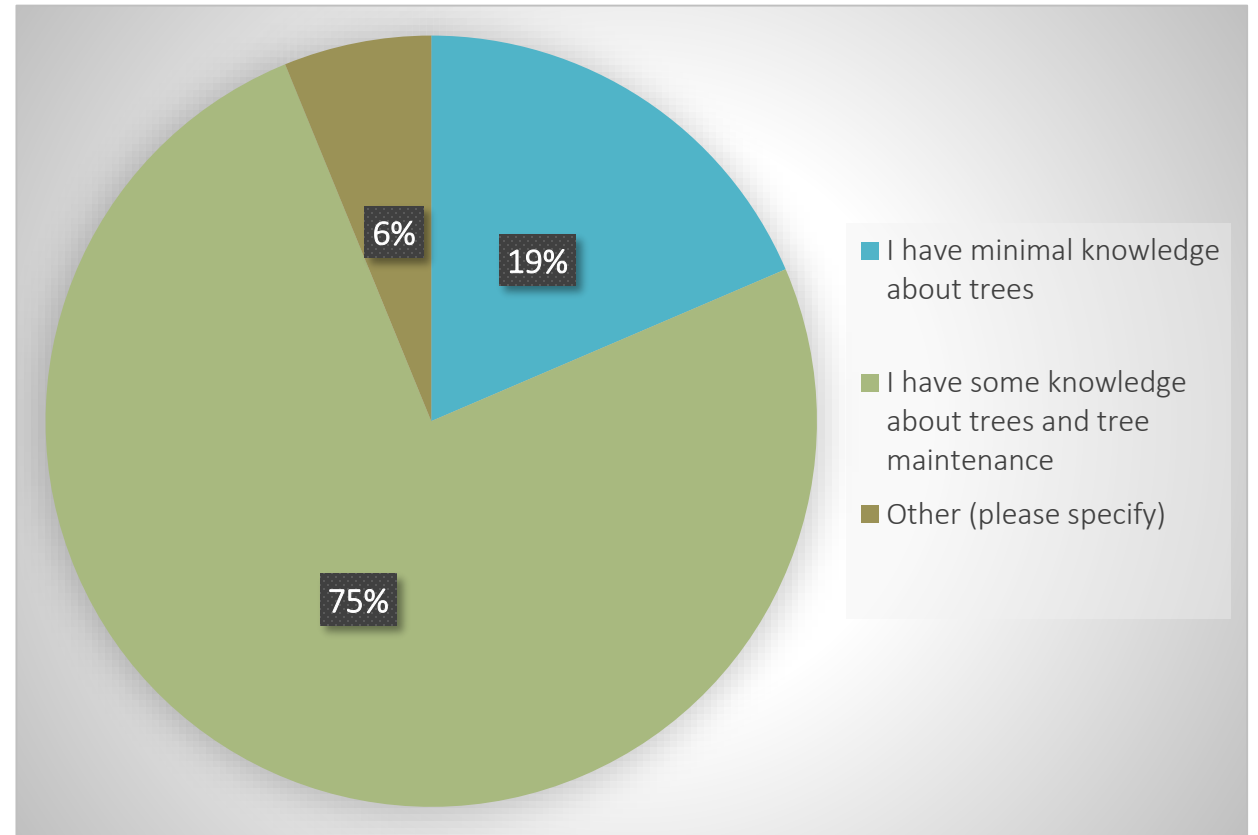
# Tree Survey

*“What do you know about trees?”*

CAMAS ADULTS



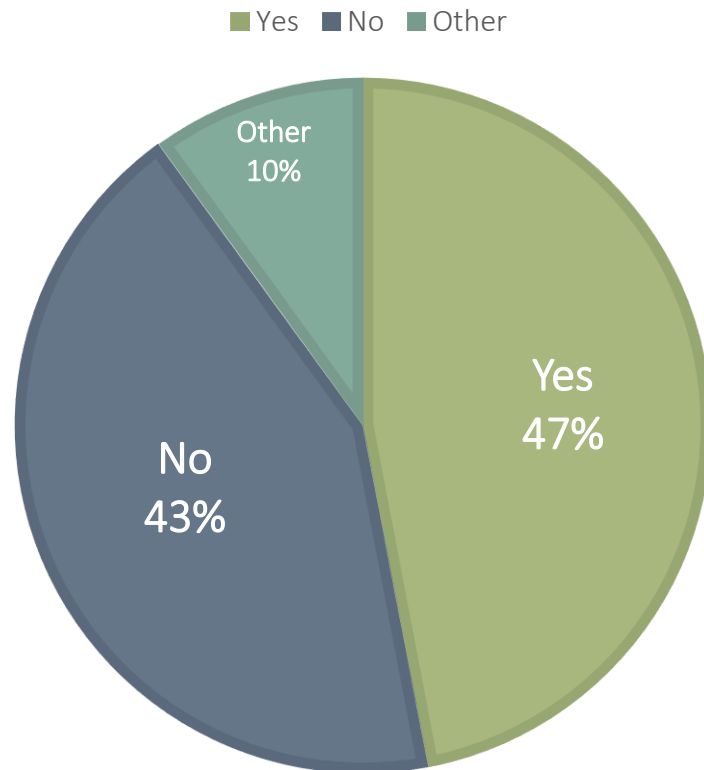
SKYRIDGE MIDDLE SCHOOL STUDENTS



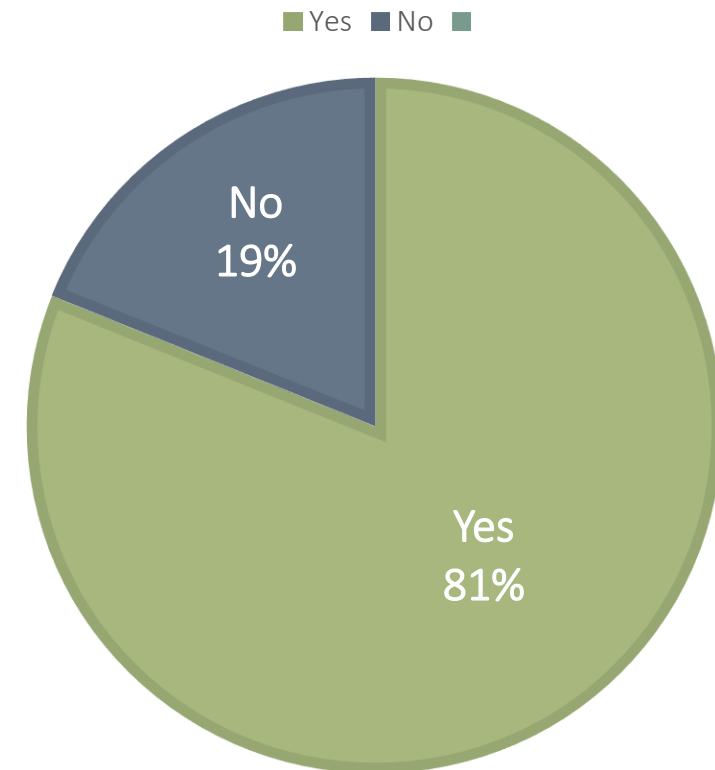
# Tree Survey

## “Should a tree permit be required to remove a tree?”

269 ADULTS



97 SKYRIDGE STUDENTS





A photograph of a lush green park with many trees and a grassy area. The trees are in full leaf, and the grass is bright green. The scene is bright and sunny, with dappled light on the ground.

# Proposed Changes



# Street Tree Removal Permit

Draft ordinance creates the requirement for a permit.

- Defines a street tree
- Allows options regarding fees
- Allows options for replanting
- Provides exemptions
- Provides a means to enforce

“A tree which has lost its head will never recover it again, and will survive only as a monument of the ignorance and folly of its Tormentor.”

*George William Curtis*

# Public Trees –Unauthorized removal

## Park Trees

Changes proposed within Chapter 12.32

Changes proposed to fee schedule

## Critical Areas

Changes proposed within Chapter 16.51

Minor changes proposed with Vegetation Removal Permit (not included in draft)

Consultants did not recommend further changes with other chapters (e.g. steep slopes, wetlands, streams)

# Preservation - Case Studies





# What Approach would be best?

(Current – Ch. 18.31)

*To the extent practical, existing healthy significant trees shall be retained. Preservation of groups of significant trees, rather than individual trees shall be preferred.*

	Camas	Olympia
% of trees must be preserved	No	30 tree units per acre
Requires planting to meet goal	No	Yes
Perimeter trees – retain / plant	Generally as buffers between zones, and around parking lots	Yes
New trees required on private lot?	No	Yes, if less than 30 tree units
Street Trees Required?	Yes	Yes
Fee In-Lieu? Tree Fund	No	Yes

# Deep Dive – City of Olympia

Site Visits and Meeting with City of Olympia Staff



14TH

MIRADA

Mirada Plat

Tree and Critical Area Tract







Merryman Place

Tree Tract

BOULEVARD

BUCKINGHAM

WAGON WHEEL

FARMER

MERRYMAN

BLACKSMITH

36TH

VAN EPPS

HUMPHREY









**Tree Tract**

**Bethel Place Plat**

**Critical Area  
Storm, and  
Tree Tract**

26TH

FREEMAN

25TH

BETHEL



# Cammas Case Studies

# Sierra Meadows

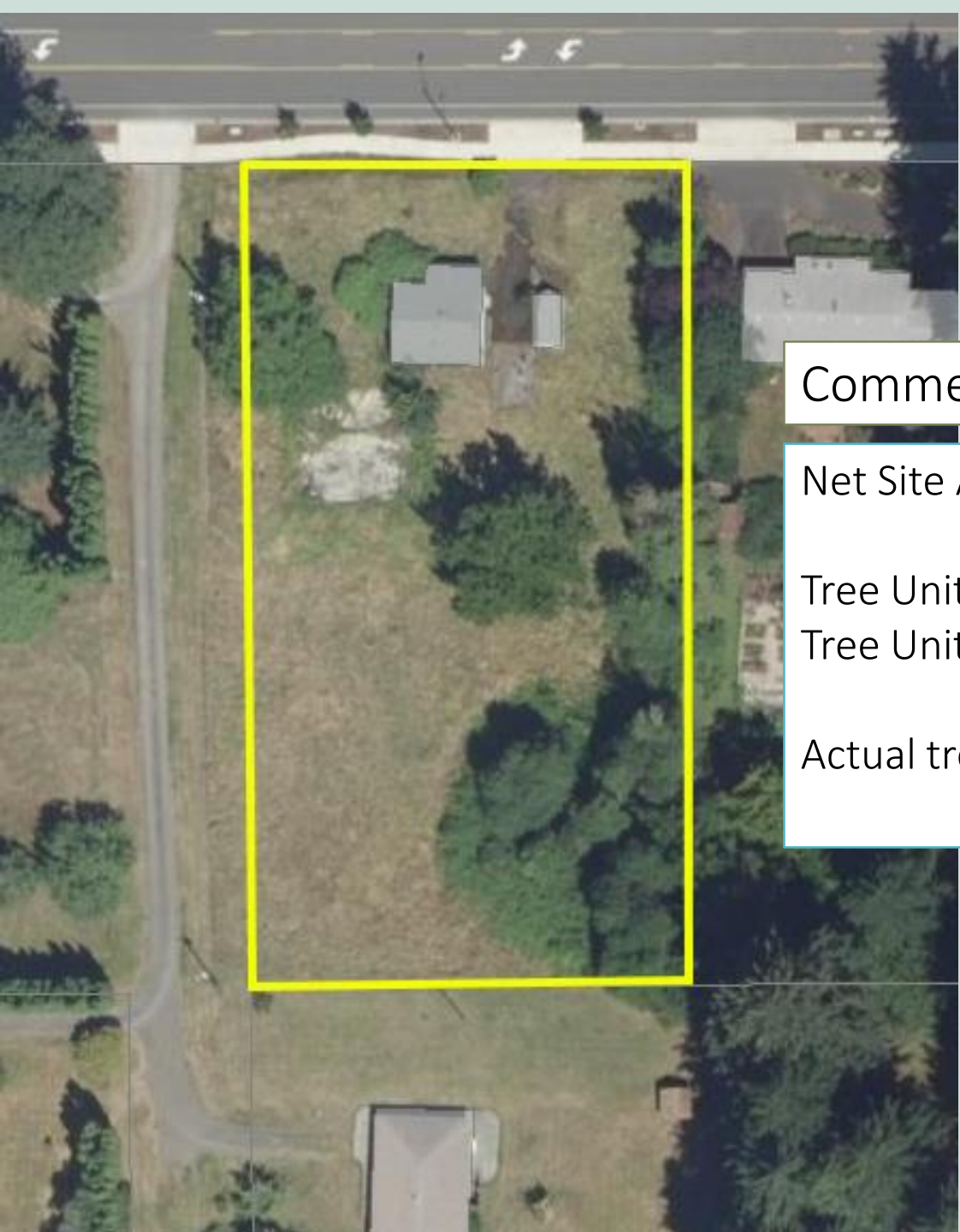
Net Site Area: **3.55 acres (ac.)**  
(subtract wetland tract)

Tree Units Provided: 67  
Tree Units Min. (30 T.U./ac.): **106**

Actual T.U./Acre: **18/ac.**







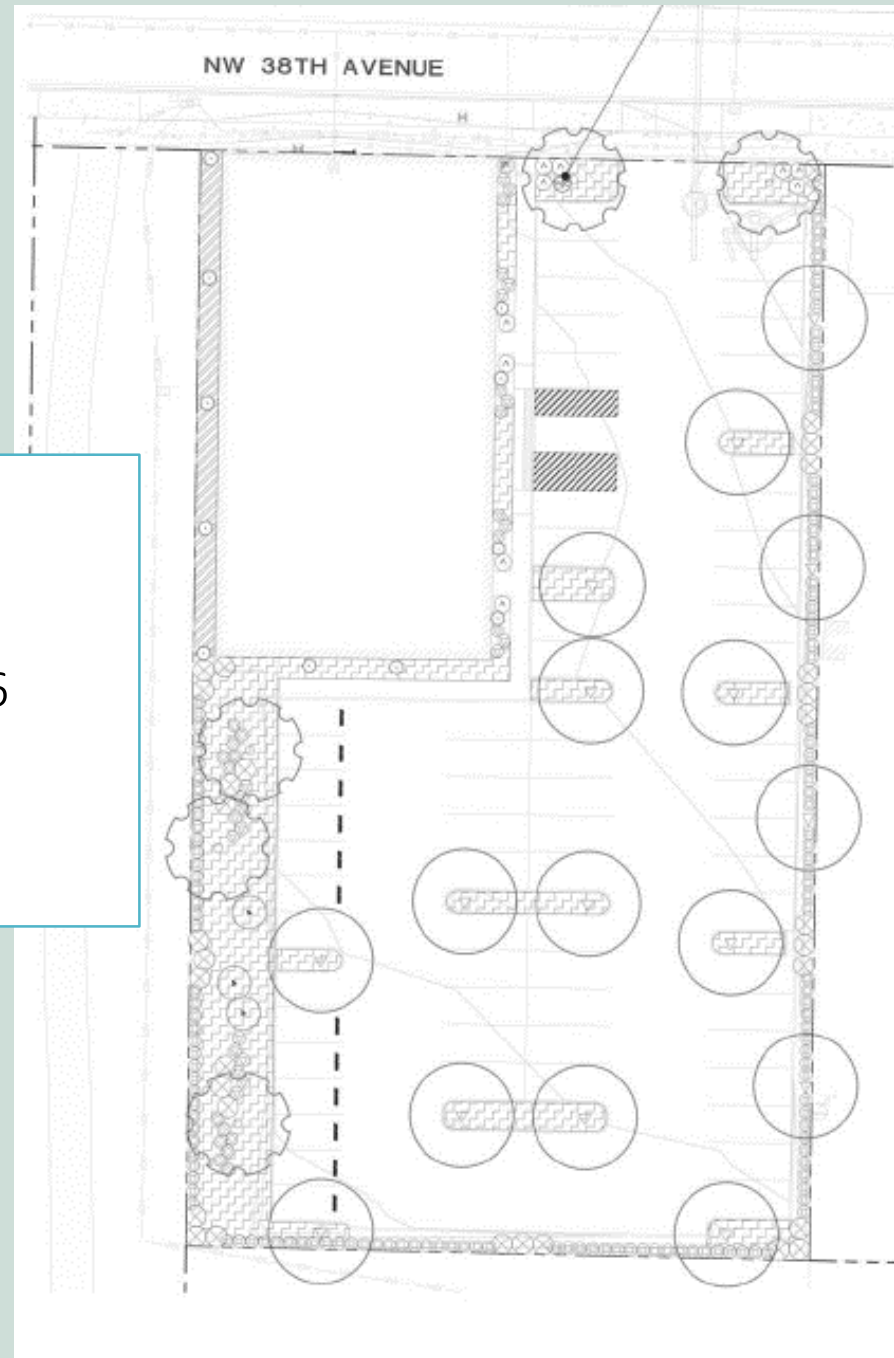
## Commercial Office

Net Site Area: **0.87**

Tree Units Provided: 21

Tree Units Min. (30 T.U./Acre): 26

Actual tree units/ac.: **24/ac.**





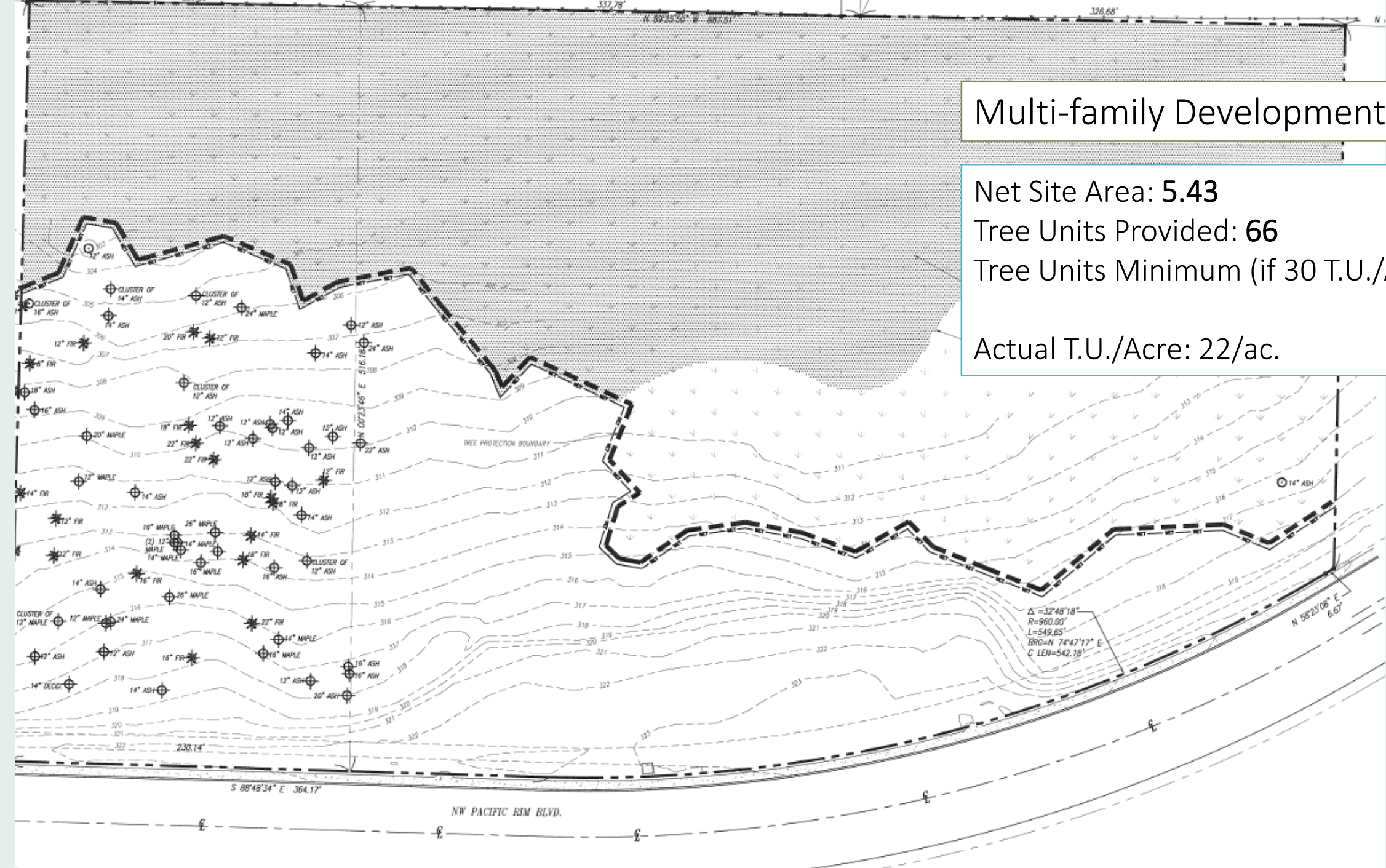
# Multi-family Development

Net Site Area: **5.43**

Tree Units Provided: **66**

Tree Units Minimum (if 30 T.U./Acre): 162

Actual T.U./Acre: 22/ac.





**18.13.051 Minimum Tree Density Requirement.**

A. Tree Density. A minimum tree density per net acre is required and must be incorporated within the overall landscape plan. The tree density may consist of existing trees, replacement trees or a combination of existing and replacement trees, pursuant to the priority established in Section 18.13.052. Required street trees may not be counted toward the minimum tree density requirement.

Proposed Activity	Required Minimum Tree Density per Acre	Required Tree Replacement
New Development	20 Tree Units	20 Tree Units per acre
Residential	20 Tree Units	20 Tree Units per acre
Developed commercial and industrial properties	20 Tree Units	3 Tree Units for every 1 tree unit removed up to minimum tree density