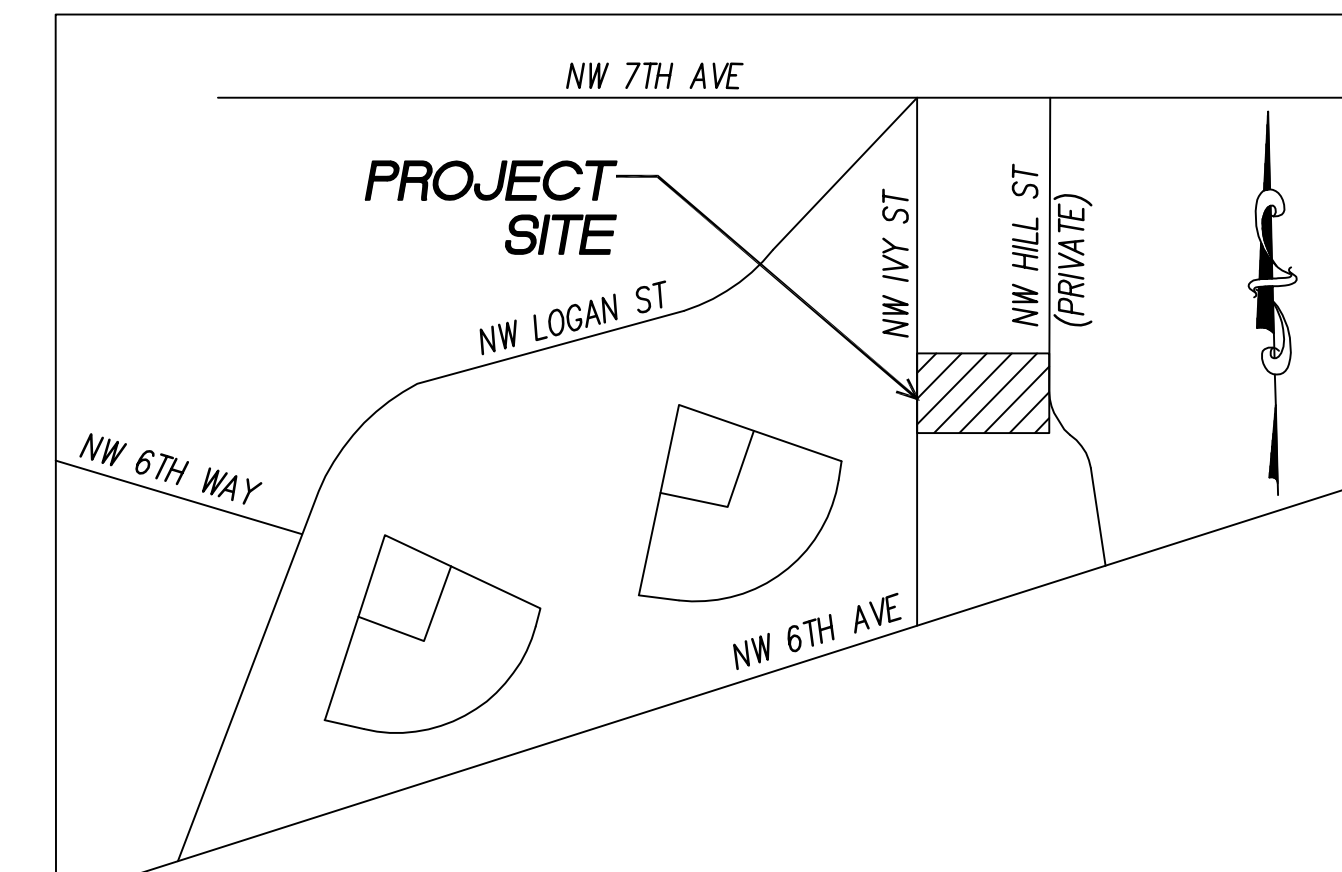


VALENCIA SHORT PLAT

COVER / INDEX SHEET

LOCATED IN A PORTION OF THE NW 1/4 OF THE SE 1/4,
OF SECTION 10, T. 1 N., R. 3 E., W. M.,
CITY OF CAMAS, CLARK COUNTY, WASHINGTON

Exhibit 8



VICINITY MAP

NTS

PROJECT DATA

LOCATION: NW IVY STREET & NW 6TH AVENUE
CAMAS, WASHINGTON 98607

PROJECT AREA: (PER GIS RECORDS) 0.26 ACRES
(PER SURVEY LINWORK) 11,452 SF

PROPERTY ID #: 852740-000

EXISTING LOTS: 1

PROPOSED LOTS: 3

PROJECT DATA SOURCE: CLARK COUNTY GIS

ZONING: MF-18

SOIL TYPES/CLASS: NON-HYDRIC/OIB
CATEGORY 2 RECHARGE AREAS

FIRE DISTRICT: CAMAS WASHOUGAL

WATER PURVEYOR: CITY OF CAMAS

SEWER PURVEYOR: CITY OF CAMAS

STORM WATER: CITY OF CAMAS

ST BACKS:

MINIMUM FRONT YARD/AT	
GARAGE FRONT=	10'/18'
SIDE INTERIOR=	3'
STREET=	15'
REAR=	10'

APPLICANT/OWNER:

LUIS VALENCIA
PO BOX 420
CAMAS, WA 98607
(360) 773-0093
valencialab@hotmail.com

PLANNING & CIVIL ENGINEERING
CIVILNW
717 NE 61ST STREET, SUITE 202
VANCOUVER, WA 98665
(360) 260-9400 x37
(360) 260-3509 FAX
CONTACT:
DAVID SPENCER
david@civilnw.com

SUBJECT TO
CITY APPROVAL



PRIOR TO CONSTRUCTION

PROJECT AREA:

LOT 1:	4,193 SF
LOT 2:	3,578 SF
LOT 3:	3,681 SF
TOTAL AREA:	11,452 SF (0.26 ACRES)

ON-SITE AREAS:

EX. GRAVEL TO REMAIN	579 SF
ROOF	3,366 SF
DRIVEWAY	1221 SF
LANDSCAPE	6,598 SF
WALKWAY	99 SF
TOTAL AREA:	11,452 SF (0.26 ACRES)

STORM REQUIREMENTS

NEW IMPERVIOUS = 4,782 SF
NEW, REPLACED, OR
NEW PLUS REPLACED IMPERVIOUS = 5,225+ SF
(>2000 SF), (INCLUDES OFF-SITE PAVING)

MINIMUM REQUIREMENTS
#1 THROUGH #5 APPLY TO THE NEW AND REPLACED
IMPERVIOUS SURFACES AND THE LAND DISTURBED

ROOF DOWNSPOUTS TO CONNECT TO STREET VIA 4" WEEPHOLE IN CURB
(SEE SHEET C-2 FOR LOCATION OF WEEPHOLES)

OFF-SITE AREAS:

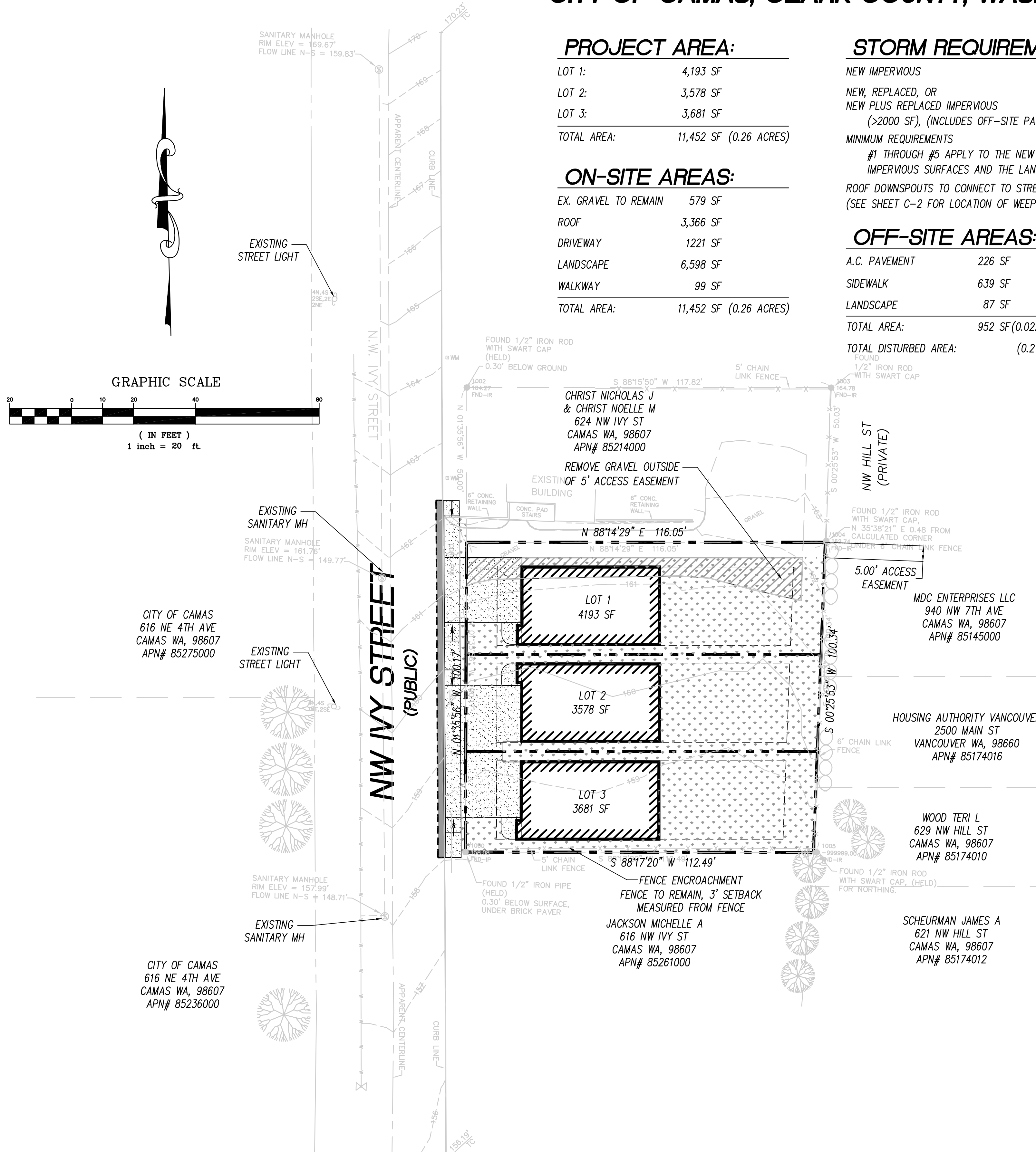
A.C. PAVEMENT	226 SF
SIDEWALK	639 SF
LANDSCAPE	87 SF
TOTAL AREA:	952 SF (0.022 ACRES)
TOTAL DISTURBED AREA:	(0.27 ACRES)

SHEET INDEX

COVER COVER/INDEX SHEET
C-1 PRELIMINARY LOT LAYOUT & EROSION CONTROL PLAN
C-2 GRADING AND DRAINAGE PLAN
C-3 EXISTING CONDITIONS MAP

LEGEND

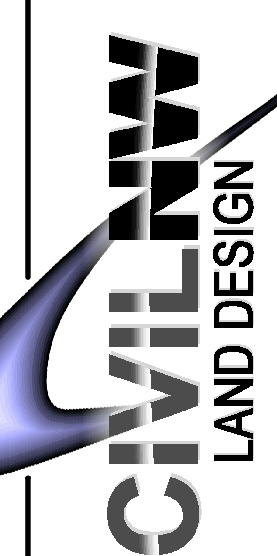
	5 FOOT CONTOUR INTERVAL
	1 FOOT CONTOUR INTERVAL
	BUILDING ENVELOPE
	EASEMENT
	SIDEWALK
	PAVEMENT
	LANDSCAPE
	SAWCUT LINE
	EX. TREE / SHRUB (APPROX. LOCATIONS FROM AERIAL PHOTO)



CITY OF CAMAS			
CITY ENGINEER _____		DATE _____	
REVISION NO.	SHEETS AFFECTED	INITIAL APPROVAL	DATE

VALENCIA SHORT PLAT
COVER AND INDEX SHEET

717 NE 61st Street, Suite 202
Vancouver, WA 98665
(360) 260-9400
(360) 260-3509 fax
civilnw.com



SHEET
C-0

P:\Projects\1332\Drawings\Cover Sheet.dwg Nov 11, 2015 3:19pm