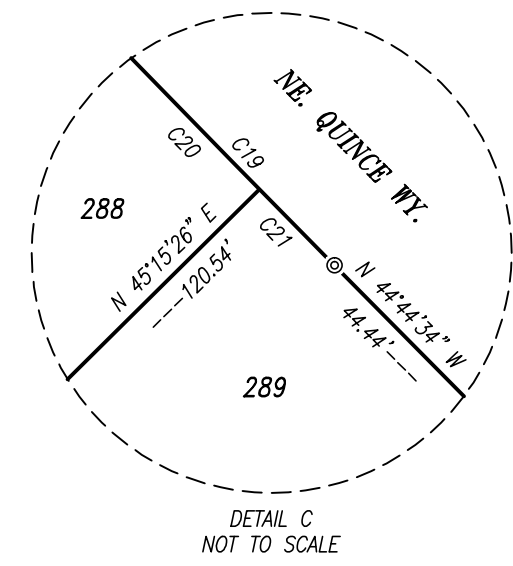
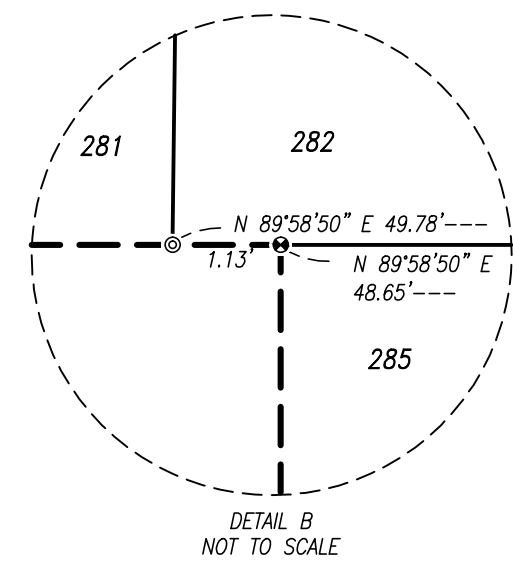
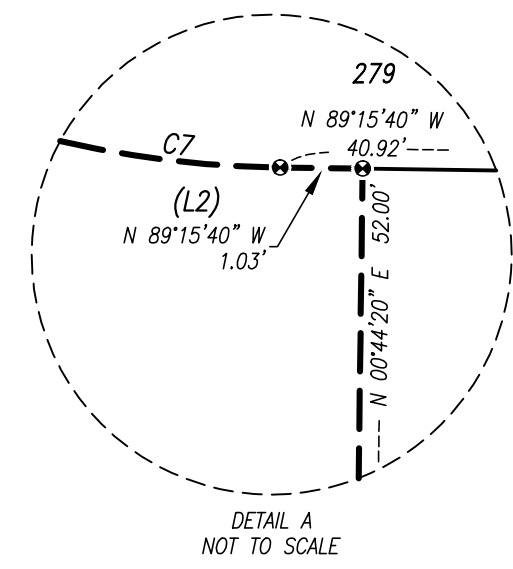
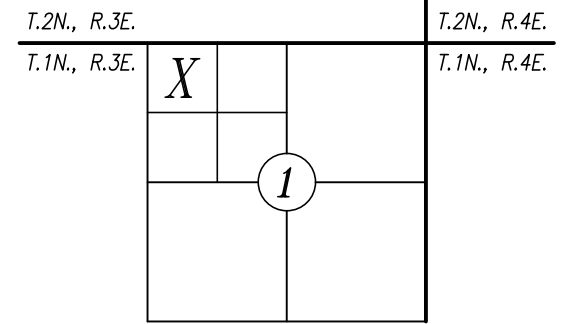


THE HILLS AT ROUND LAKE PHASES 8 & 11

A SUBDIVISION IN THE NW 1/4, OF THE NW 1/4
SEC. 1, T 1 N, R 3 E, W.M.,
CITY OF CAMAS, CLARK COUNTY, WASHINGTON
CITY OF CAMAS FINAL ORDER SUB#05-16
(POD "B2" OF THE HILLS AT ROUND LAKE PRD)
ORIGINALLY APPROVED AS THE HILLS AT ROUND LAKE PHASES 8 AND 11
OCTOBER 2017

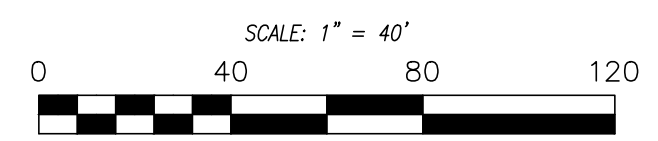


MATCH LINE
SEE PAGE 2 OF 3

LINE TABLE			CURVE TABLE			
LINE	BEARING	DISTANCE	CURVE	DELTA	RADIUS	LENGTH
L1	N 44°44'34\"/>					

EASEMENT PROVISIONS

- A PRIVATE STORM WATER EASEMENT OVER, UNDER, AND UPON LOTS 199 THROUGH 202, AS SHOWN HEREON, IS HEREBY RESERVED FOR AND GRANTED TO THE OWNER'S OF LOTS 198 THROUGH 201 FOR THE PURPOSE OF A STORM WATER DRAIN SYSTEM. THE OWNERS OF LOTS 198 THROUGH 202 SHALL BE RESPONSIBLE FOR THE MAINTENANCE AND REPAIR OF THE STORM WATER DRAIN SYSTEM THEY HAVE BENEFIT OF USE.
- A PRIVATE STORM WATER EASEMENT OVER, UNDER, AND UPON LOTS 203 AND 204, AS SHOWN HEREON, IS HEREBY RESERVED FOR AND GRANTED TO THE OWNERS OF LOTS 204 AND 205 FOR THE PURPOSE OF A STORM WATER DRAIN SYSTEM. THE OWNERS OF LOTS 203 THROUGH 205 SHALL BE RESPONSIBLE FOR THE MAINTENANCE AND REPAIR OF THE STORM WATER DRAIN SYSTEM THEY HAVE BENEFIT OF USE.
- A PRIVATE STORM WATER EASEMENT OVER, UNDER, AND UPON LOTS 281 THROUGH 284, AS SHOWN HEREON, IS HEREBY RESERVED FOR AND GRANTED TO THE OWNER'S OF LOTS 280 THROUGH 283 FOR THE PURPOSE OF A STORM WATER DRAIN SYSTEM. THE OWNERS OF LOTS 280 THROUGH 284 SHALL BE RESPONSIBLE FOR THE MAINTENANCE AND REPAIR OF THE STORM WATER DRAIN SYSTEM THEY HAVE BENEFIT OF USE.
- A PRIVATE STORM WATER EASEMENT OVER, UNDER, AND UPON LOTS 269 THROUGH 272 AND TRACT 1, AS SHOWN HEREON, IS HEREBY RESERVED FOR AND GRANTED TO THE OWNERS OF LOTS 269 THROUGH 273 FOR THE PURPOSE OF A STORM WATER DRAIN SYSTEM. THE OWNERS OF LOTS 269 THROUGH 273 AND TRACT 1 SHALL BE RESPONSIBLE FOR THE MAINTENANCE AND REPAIR OF THE STORM WATER DRAIN SYSTEM THEY HAVE BENEFIT OF USE.
- LOTS 287 THROUGH 291 SHALL BENEFIT FROM THE PRIVATE STORM WATER EASEMENT OVER, UNDER, AND UPON LOTS 237 THROUGH 239 AS SHOWN ON THE PLAN OF THE HILLS AT ROUND LAKE PHASE 9 AS GRANTED TO THE HOMEOWNERS ASSOCIATION. STORM WATER DRAIN SYSTEMS FOR LOTS 287 THROUGH 291 SHALL CONNECT TO THE STORM WATER DRAINAGE IMPROVEMENTS LOCATED WITHIN SAID PHASE 9 PRIVATE STORM WATER EASEMENT.



BASIS OF BEARINGS
N 89°15'40\"/>

