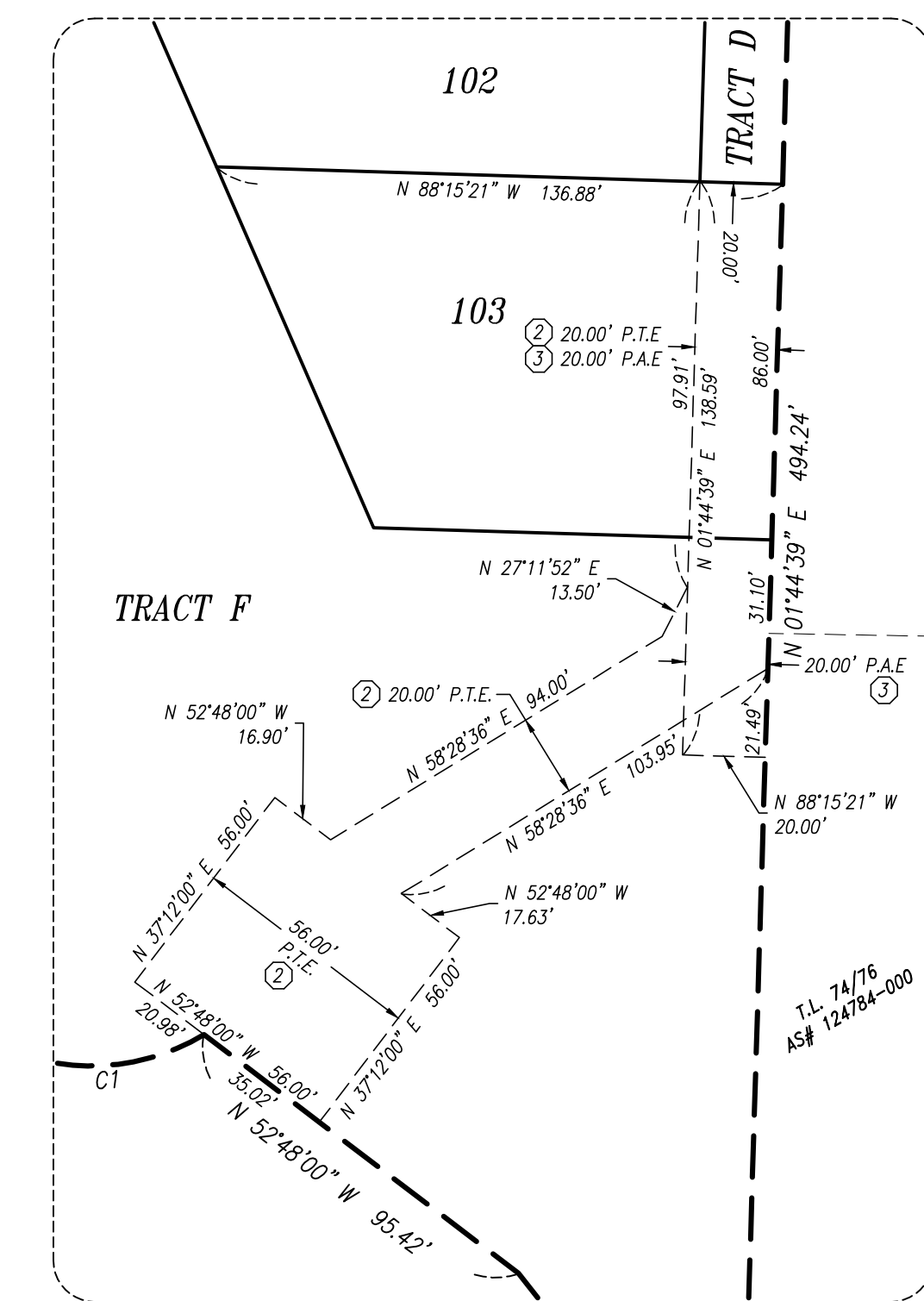
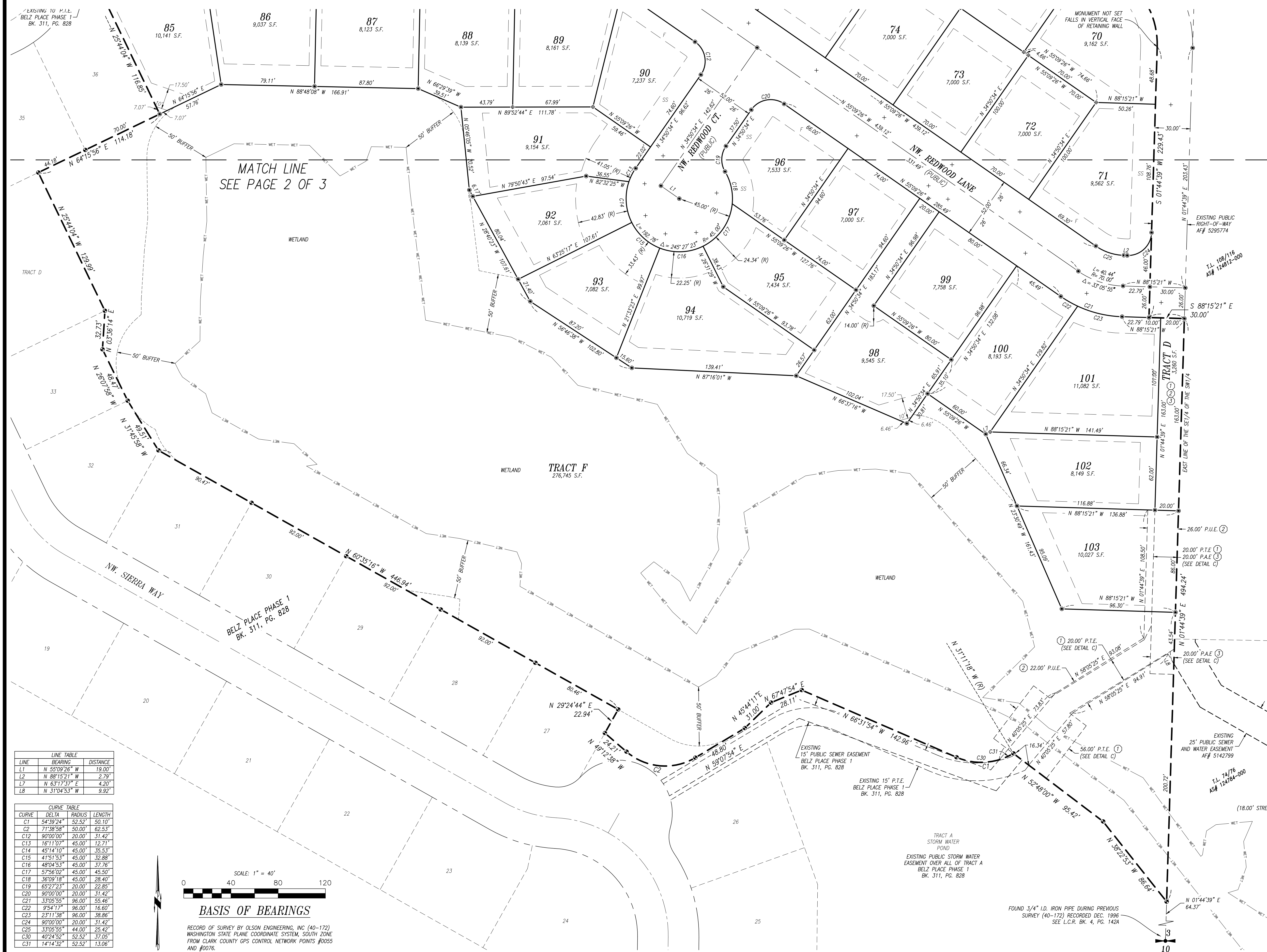


BELZ PLACE PHASE 2

A SUBDIVISION IN THE SE 1/4 OF THE SW 1/4 SEC. 3, T1N, R3E, W.M.,
CITY OF CAMAS, CLARK COUNTY, WASHINGTON
BELZ PLACE SUBDIVISION FINAL ORDER #SUB05-14
MARCH 2018

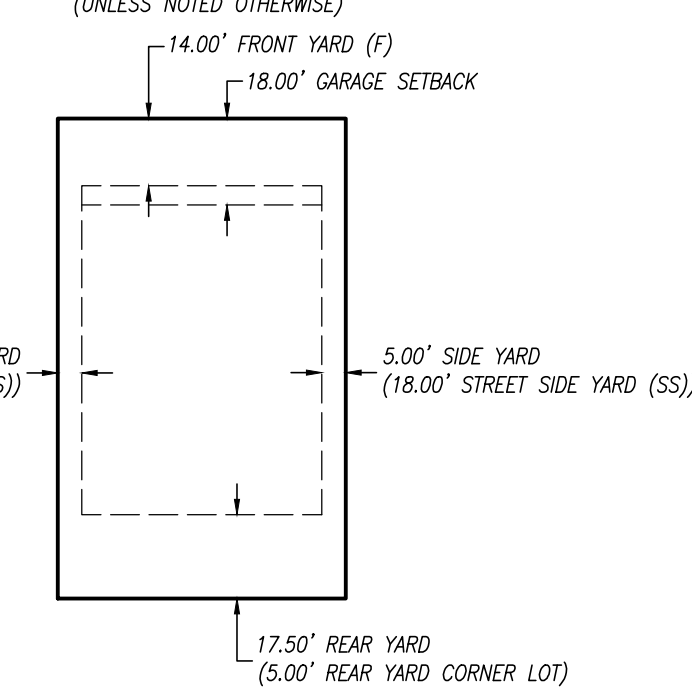


LEGEND

- FOUND MONUMENT AS DESCRIBED
- 1/2" X 24" IRON ROD & YELLOW PLASTIC CAP STAMPED (OLSON ENG. PLS 17688) SET DURING PREVIOUS SURVEY OF BELZ PLACE PHASE 1 (SEE REFERENCE # 9)
- + SET BRASS SCREW AND WASHER STAMPED "OLSON ENG. 46624" IN CONCRETE CURB ON A PROJECTION OF THE LOT LINE AT A DISTANCE OF 11.75" FROM THE FRONT LOT CORNER UNLESS NOTED OTHERWISE IN THE CURB SCREW TABLE (THIS PAGE)
- SET 1/2" X 24" REBAR & YELLOW PLASTIC CAP STAMPED "OLSON ENG. 46624" DURING THIS SURVEY
- P.T.E. PUBLIC TRAIL EASEMENT
- P.U.E. PUBLIC UTILITY EASEMENT
- P.A.E. PRIVATE ACCESS EASEMENT
- Ⓢ REFERENCE EASEMENT PROVISION NOTE (SEE PAGE 2)
- F FRONT YARD SETBACK
- SS STREET SIDE YARD SETBACK
- (R) RADIUS OR RADIAL
- PLAT BOUNDARY
- EXISTING TAX LOT LINE
- CENTERLINE RIGHT-OF-WAY
- LOT LINE AND RIGHT-OF-WAY MARGIN
- EXISTING RIGHT-OF-WAY MARGIN
- EASEMENT (AS NOTED)
- BUILDING SET BACK LINE
- EXISTING WETLAND

LOT LINE	DISTANCE
85/86	12.23'
89/90	11.89'
91/92	9.29'
92/93	9.08'
93/94	9.08'
94/95	9.08'
95/96	10.80'
100/101	11.95'

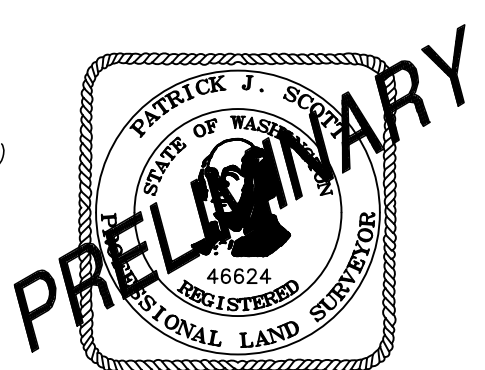
MINIMUM BUILDING SETBACKS



LINE	BEARING	DISTANCE
L1	N 55°02'26" W	19.00'
L2	N 88°15'21" W	2.79'
L7	N 63°17'37" E	4.20'
L8	N 31°04'53" W	9.92'

CURVE	DELTA	RADIUS	LENGTH
C1	54°39'24"	52.52'	50.10'
C2	71°38'58"	50.00'	62.53'
C12	90°00'00"	20.00'	31.42'
C13	16°11'07"	45.00'	12.71'
C14	45°14'10"	45.00'	35.53'
C15	41°51'53"	45.00'	32.88'
C16	48°04'53"	45.00'	37.76'
C17	57°36'02"	45.00'	45.50'
C18	36°09'18"	45.00'	28.40'
C19	65°27'23"	20.00'	22.85'
C20	90°00'00"	20.00'	31.42'
C21	33°05'55"	96.00'	55.46'
C22	9°54'17"	96.00'	16.60'
C23	23°11'38"	96.00'	38.96'
C24	90°00'00"	20.00'	31.42'
C25	33°05'55"	44.00'	25.42'
C30	40°24'52"	52.52'	37.05'
C31	14°14'32"	52.52'	13.06'

SCALE: 1" = 40'
BASIS OF BEARINGS
RECORD OF SURVEY BY OLSON ENGINEERING, INC (40-172)
WASHINGTON STATE PLANE COORDINATE SYSTEM, SOUTH ZONE
FROM CLARK COUNTY GPS CONTROL NETWORK POINTS #0055
AND #0076.



PG. 3 OF 3 JOB# 6382.07.01
COPYRIGHT 2018, OLSON ENGINEERING, INC.
FILE: J:\DATA\63000\63001\6382\SURVEY\PLAT\6382.S\FPLAT-PH2_P02.DWG
OLSON LAND SURVEYORS ENGINEERS
ENGINEERING INC. 222 E. EVERGREEN BLVD, VANCOUVER, WA 98660
1-360-695-1385
1-509-289-9036