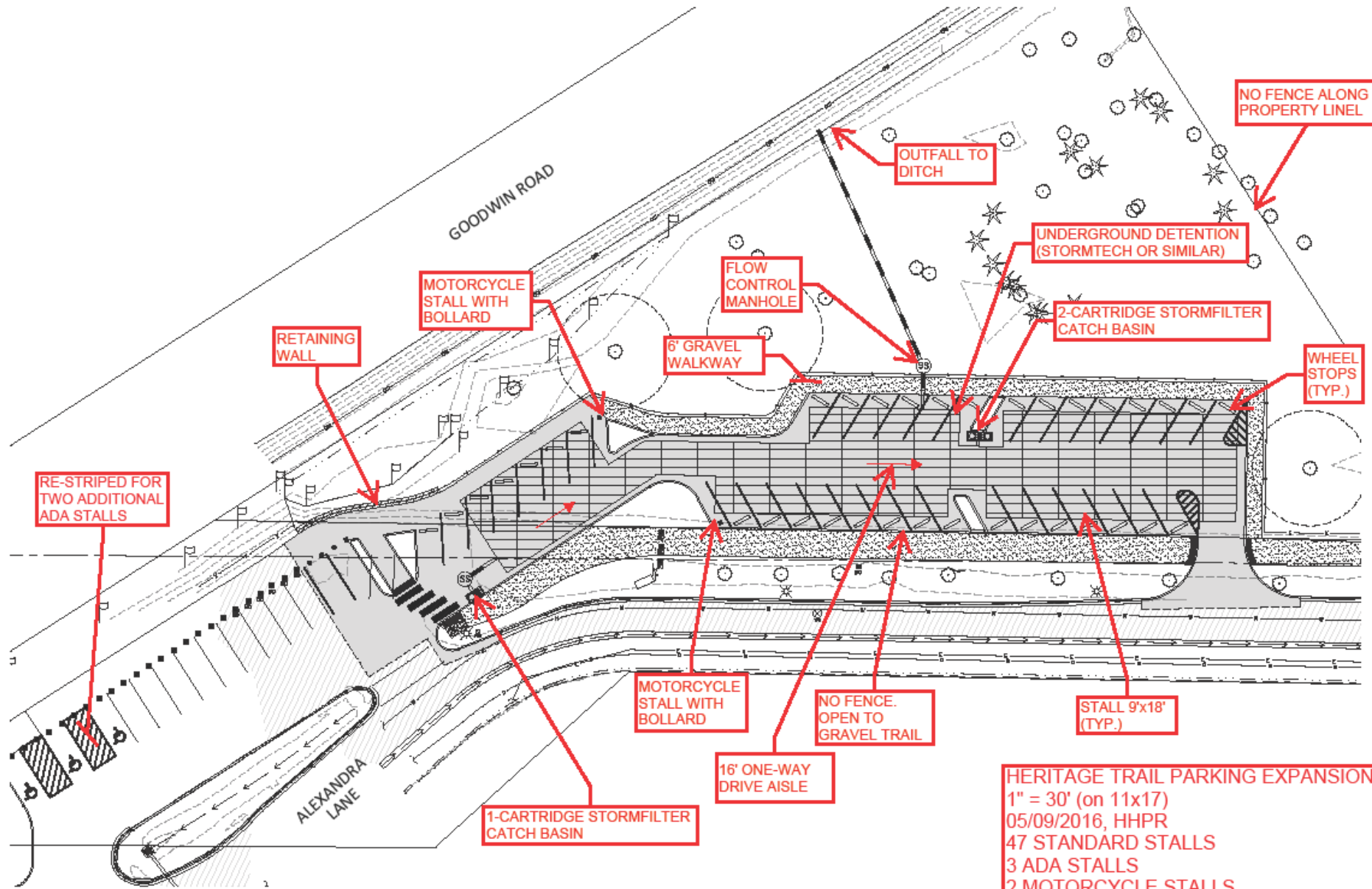


Goodwin Road Parking lot expansion





1 acre - \$150,000
 Preliminary 32 spaces
 est. \$250,000



NO FENCE ALONG PROPERTY LINE

OUTFALL TO DITCH

UNDERGROUND DETENTION (STORMTECH OR SIMILAR)

2-CARTRIDGE STORMFILTER CATCH BASIN

WHEEL STOPS (TYP.)

FLOW CONTROL MANHOLE

6' GRAVEL WALKWAY

MOTORCYCLE STALL WITH BOLLARD

RETAINING WALL

RE-STRIPED FOR TWO ADDITIONAL ADA STALLS

MOTORCYCLE STALL WITH BOLLARD

NO FENCE. OPEN TO GRAVEL TRAIL

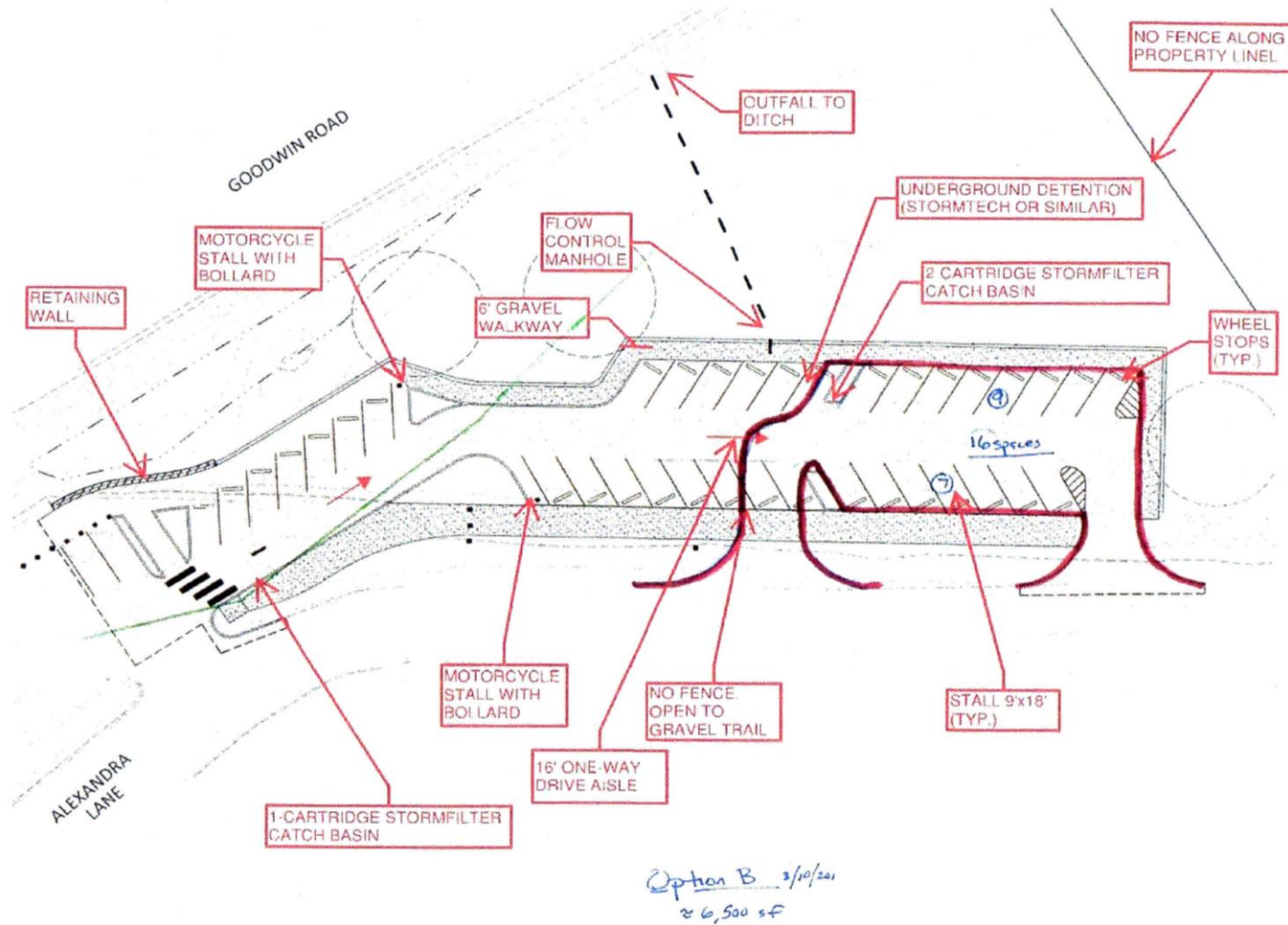
STALL 9'x18' (TYP.)

16' ONE-WAY DRIVE AISLE

1-CARTRIDGE STORMFILTER CATCH BASIN

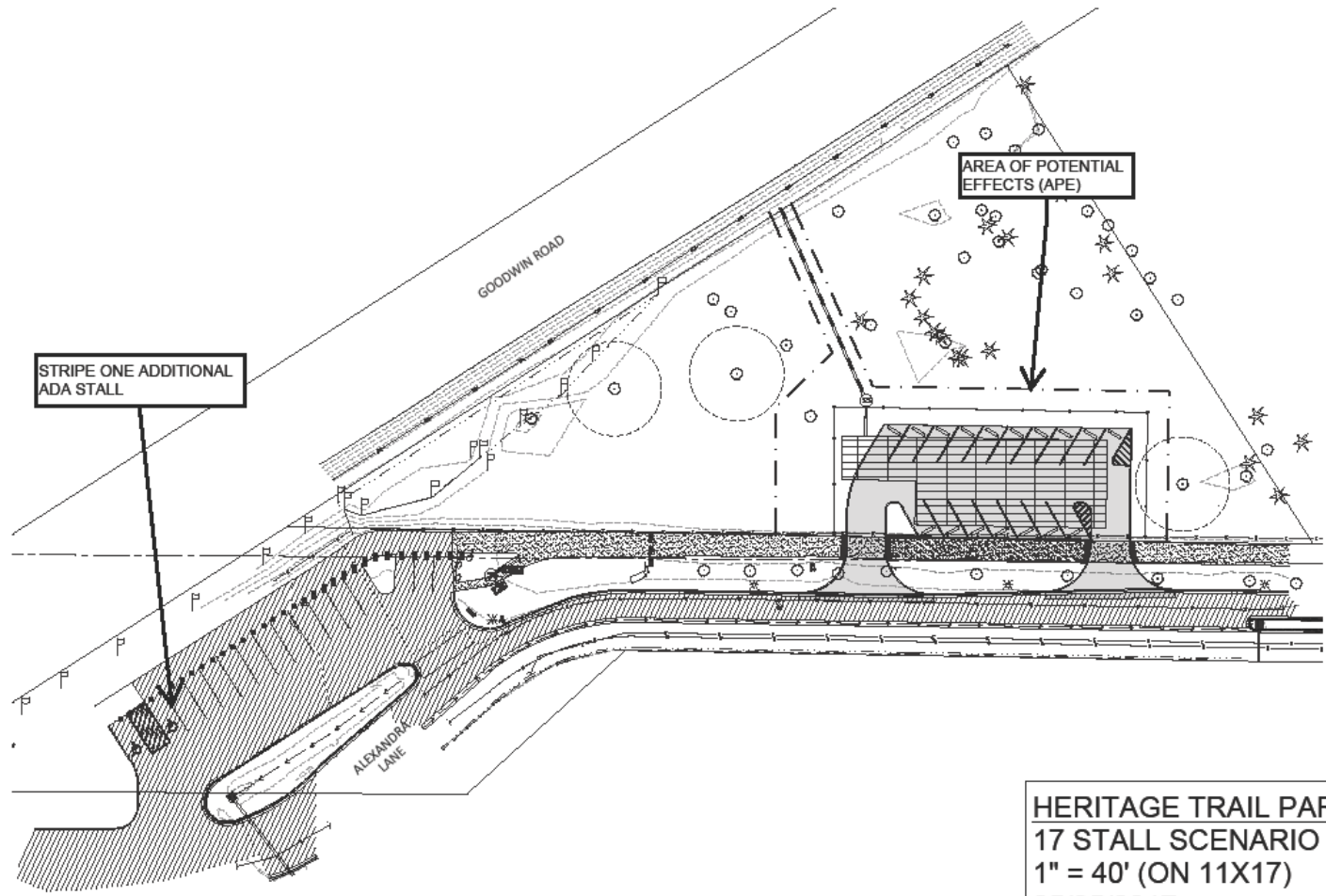
HERITAGE TRAIL PARKING EXPANSION
 1" = 30' (on 11x17)
 05/09/2016, HHPR
 47 STANDARD STALLS
 3 ADA STALLS
 2 MOTORCYCLE STALLS

52 spaces
 Est \$680,000



Parks Commission guiding principles

1. At least double number of spaces
2. Design for easy expansion
3. Stay within budget \$400,000



STRIPE ONE ADDITIONAL
ADA STALL

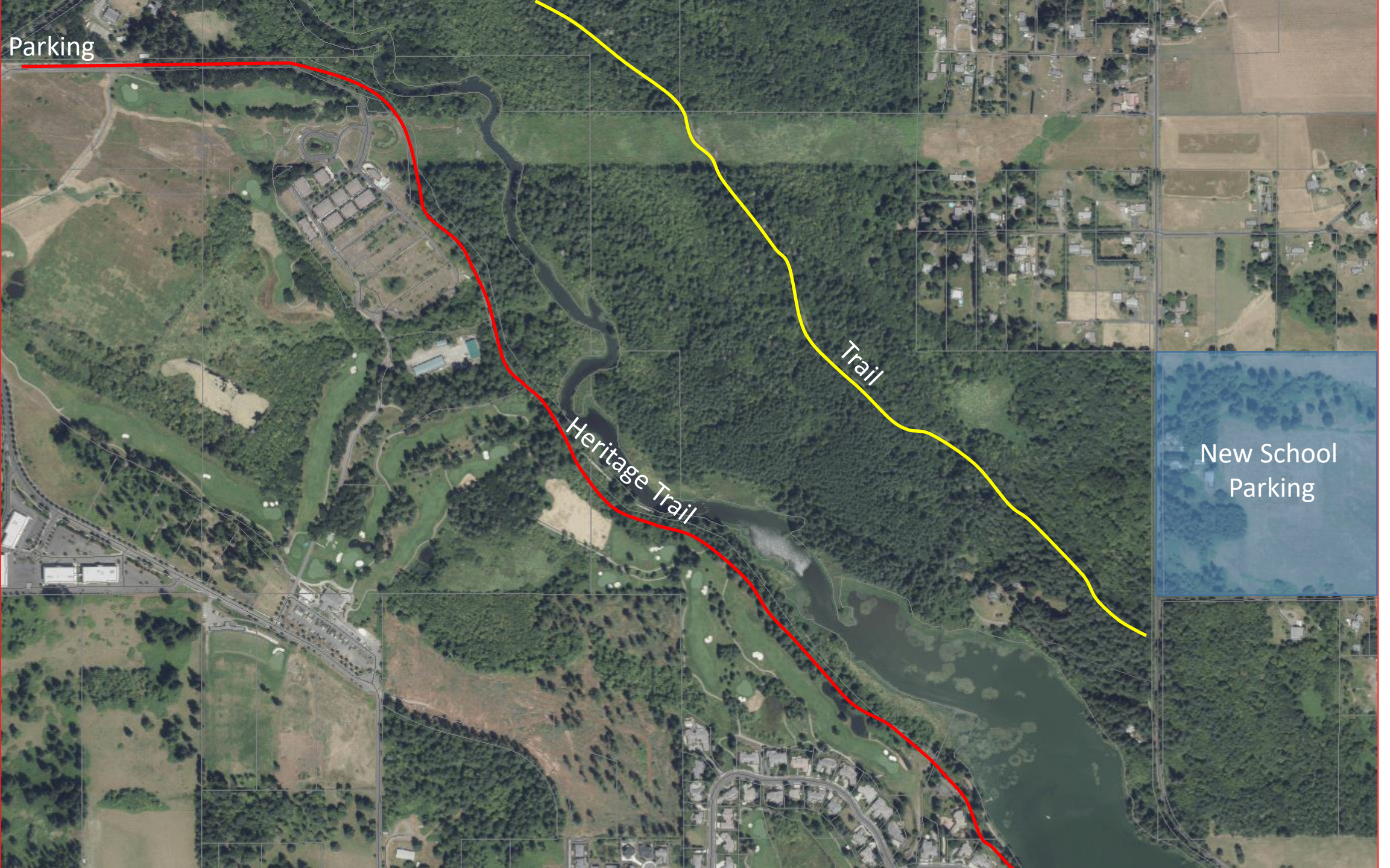
AREA OF POTENTIAL
EFFECTS (APE)

HERITAGE TRAIL PARKING
17 STALL SCENARIO
1" = 40' (ON 11X17)
05/05/2017
HHPR

Current est. \$480,637
17 spaces
Site constraints makes
expansion difficult

Alternative

Parking



Heritage Trail

Trail

New School
Parking

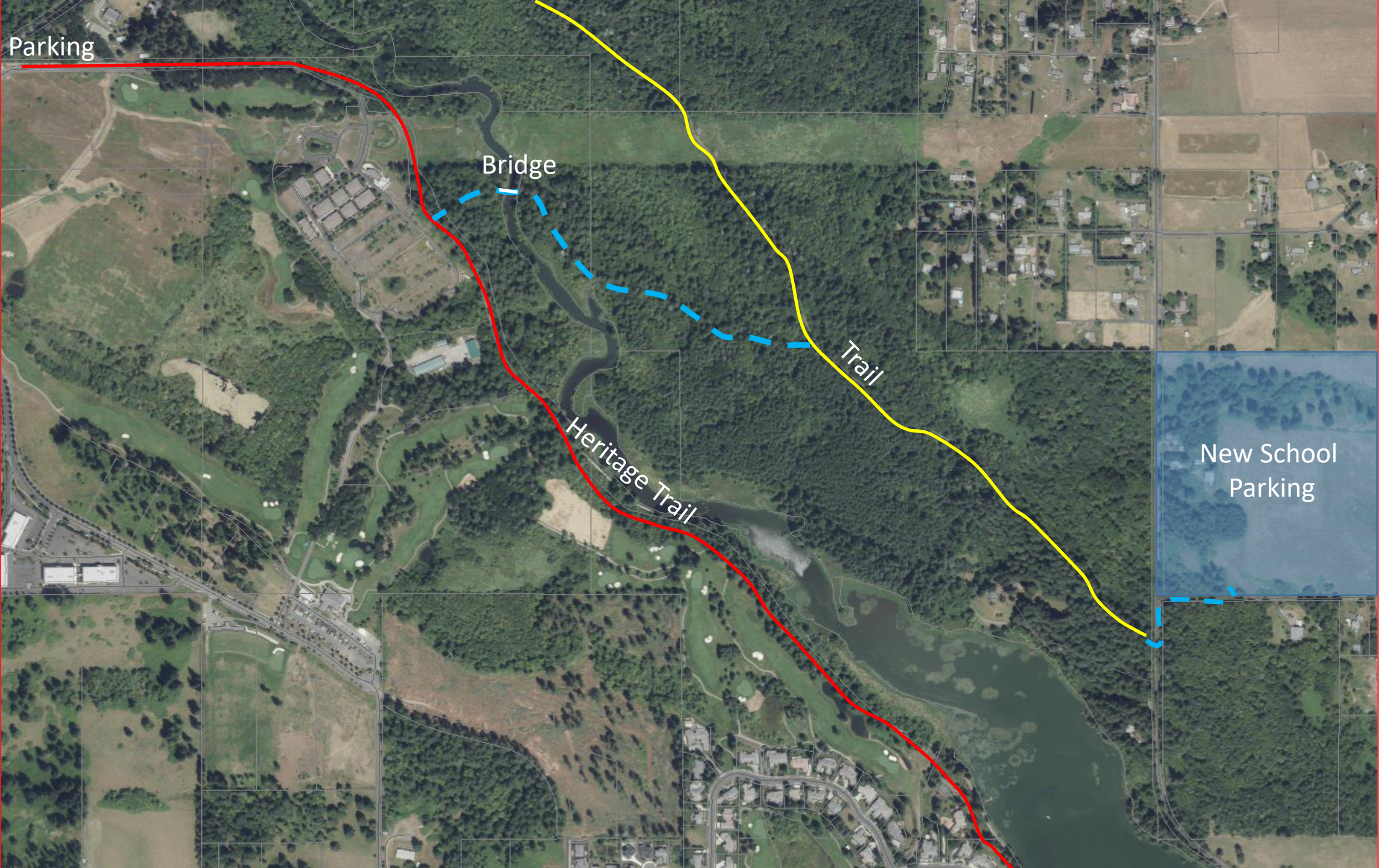
Parking

Bridge

Trail

Heritage Trail

New School
Parking



Parking

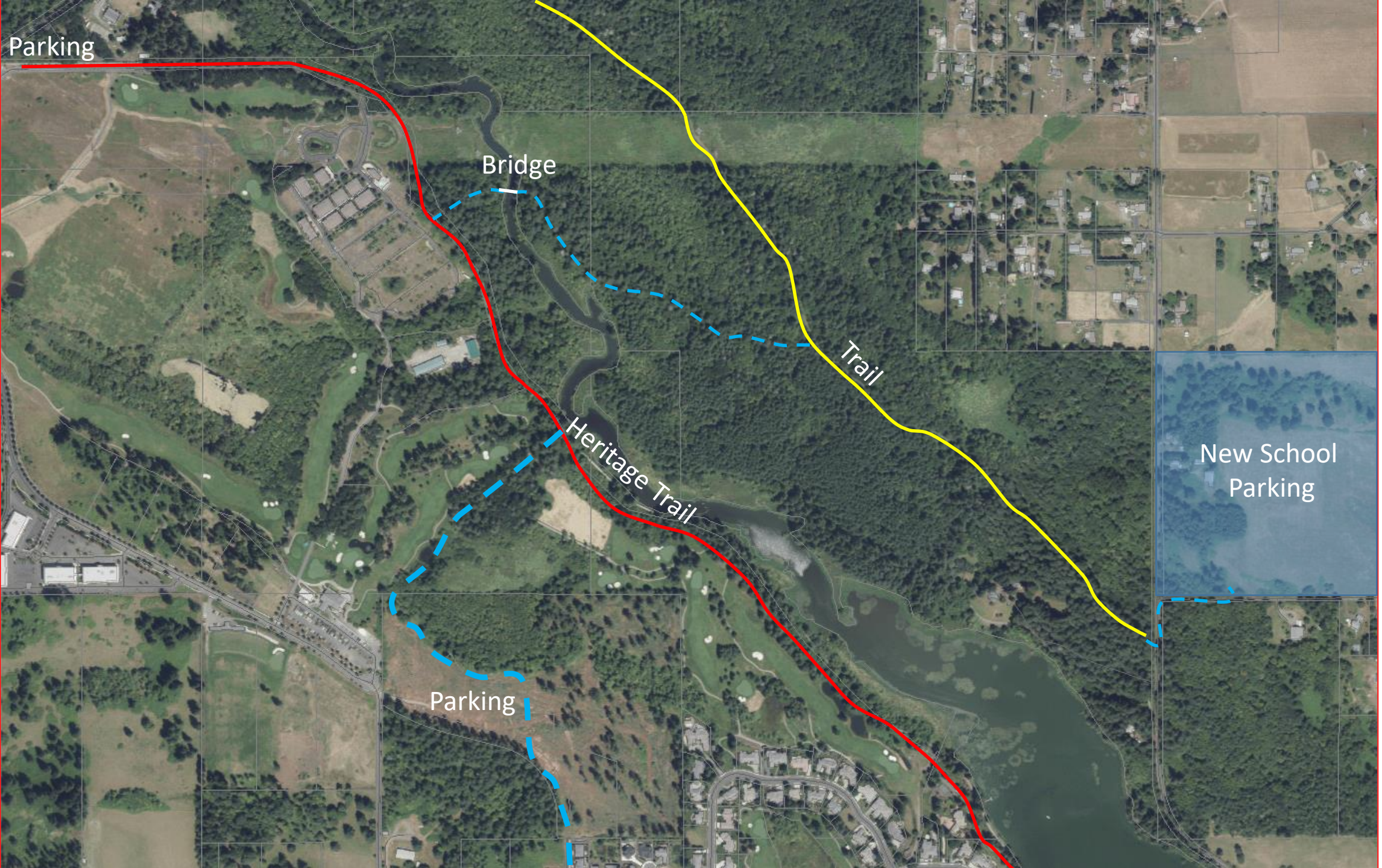
Bridge

Trail

Heritage Trail

New School
Parking

Parking



North Shore Lacamas Lake

Conservation and Recreation Vision Map

Legend

- Lakes
- Major Rivers and Streams
- City of Camas Urban Growth Area (UGA)
- Major Roads
- City Ownership (Camas and Vancouver)
- Clark County (Parks or Environmental Services)
- School District Ownership (Camas and Vancouver)
- State Ownership
- Columbia Land Trust Ownership
- Existing Soft-Surface Recreational Trails
- Existing Trailhead with Parking
- Existing Boat Launch Area

Potential Future Trails, Conservation Opportunities, and Planned Facilities

- Proposed Bicycle/Pedestrian Path (road conversion)
- Proposed Soft-Surface Trail
- Proposed Regional Trail Corridors (Intertwine)
- Proposed New Bridge or Boardwalk
- Potential Future Public Facility
- Proposed Trailhead with Parking
- Conservation Opportunity (habitat and viewshed)
- Proposed Sports Field Complex
- Potential New Boat Launch Area

This vision map reflects concepts and facilities proposed by various conservation and recreation organizations and is intended to serve as a conceptual framework to guide future recreational trail and conservation planning efforts on and around the north shore of Lacamas Lake. The locations of proposed trail corridors and facilities are conceptual. The vision is non-regulatory and subject to voluntary land owner participation.

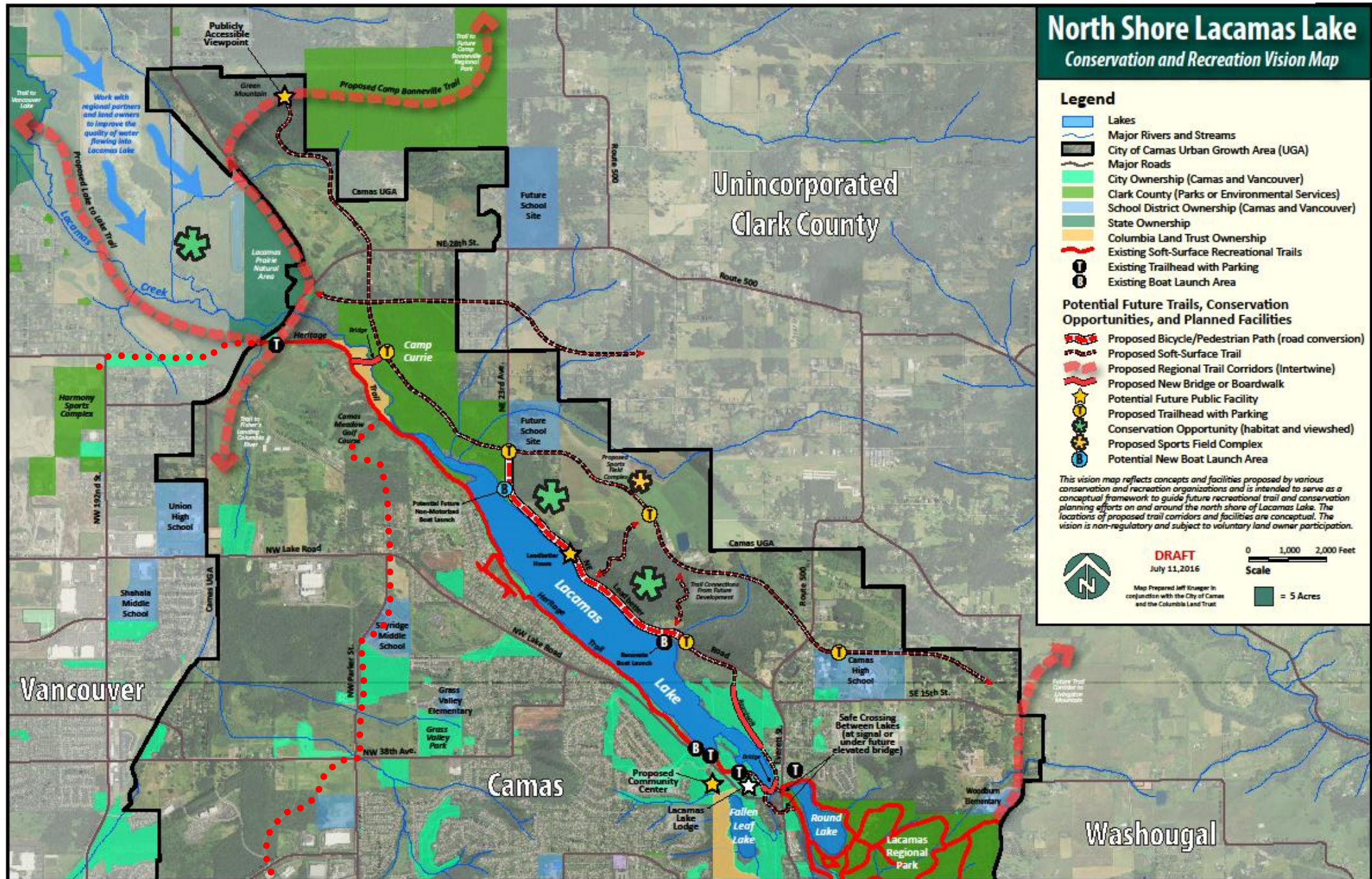


DRAFT
July 11, 2016

0 1,000 2,000 Feet
Scale

Map Prepared Jeff Krueger in conjunction with the City of Camas and the Columbia Land Trust

= 5 Acres



What's next?

- Finish engineering work on the Goodwin trail head project.
- Put the project on “pause”.
- Explore the feasibility of the Camp Curry trail expansion.

Questions?