

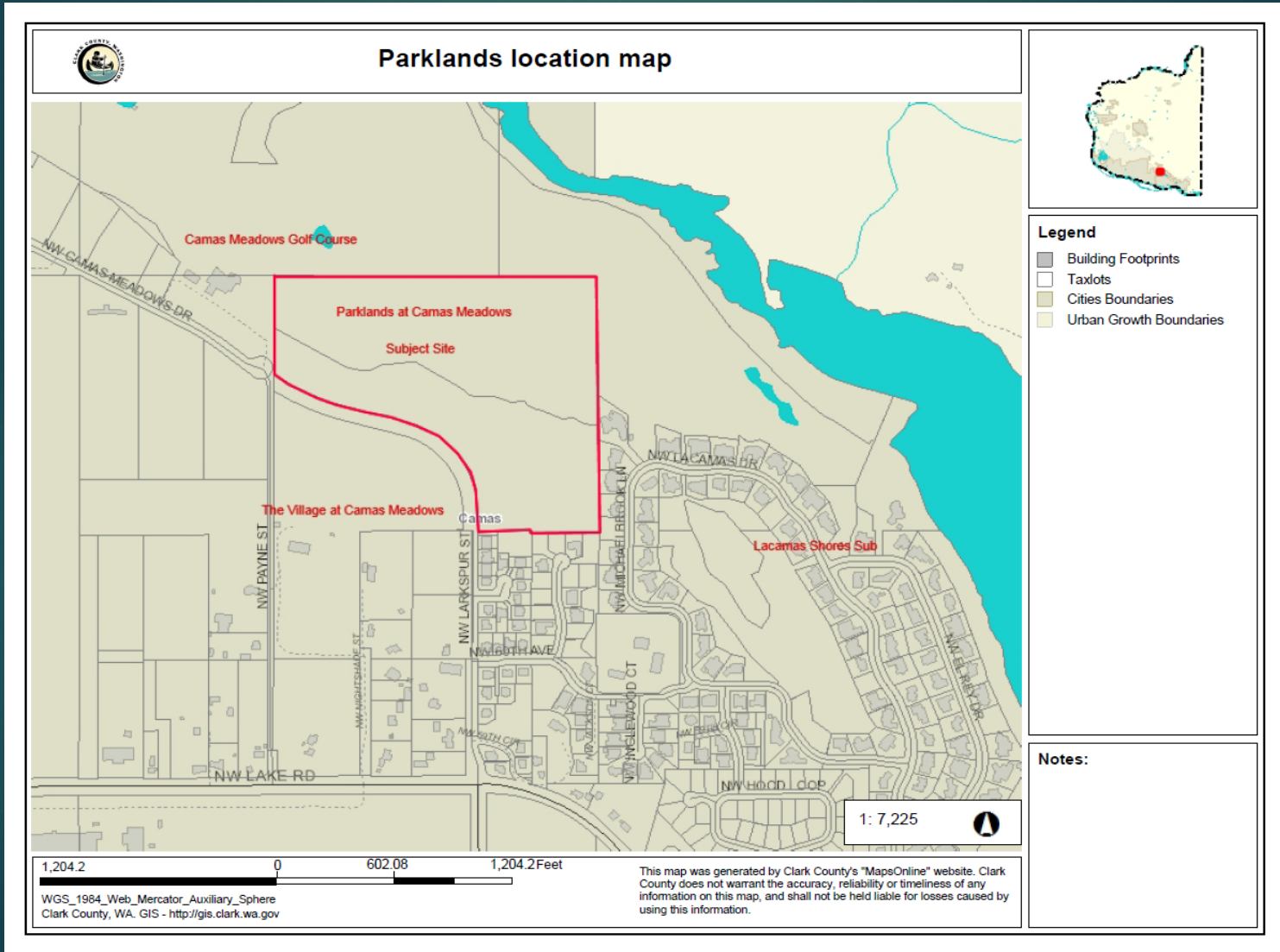
Exhibit 43  
SUB15-03

# The Parklands At Camas Meadows

PROJECT NUMBER SUB15-03

ROBERT MAUL, PLANNING MANAGER

# Project Location



# Site Conditions



## Parklands aerial photo



### Legend

- Building Footprints
- Taxlots
- ImageBestRes
  - Red: Band\_1
  - Green: Band\_2
  - Blue: Band\_3
- Cities Boundaries
- Urban Growth Boundaries

### Notes:

1: 7,225

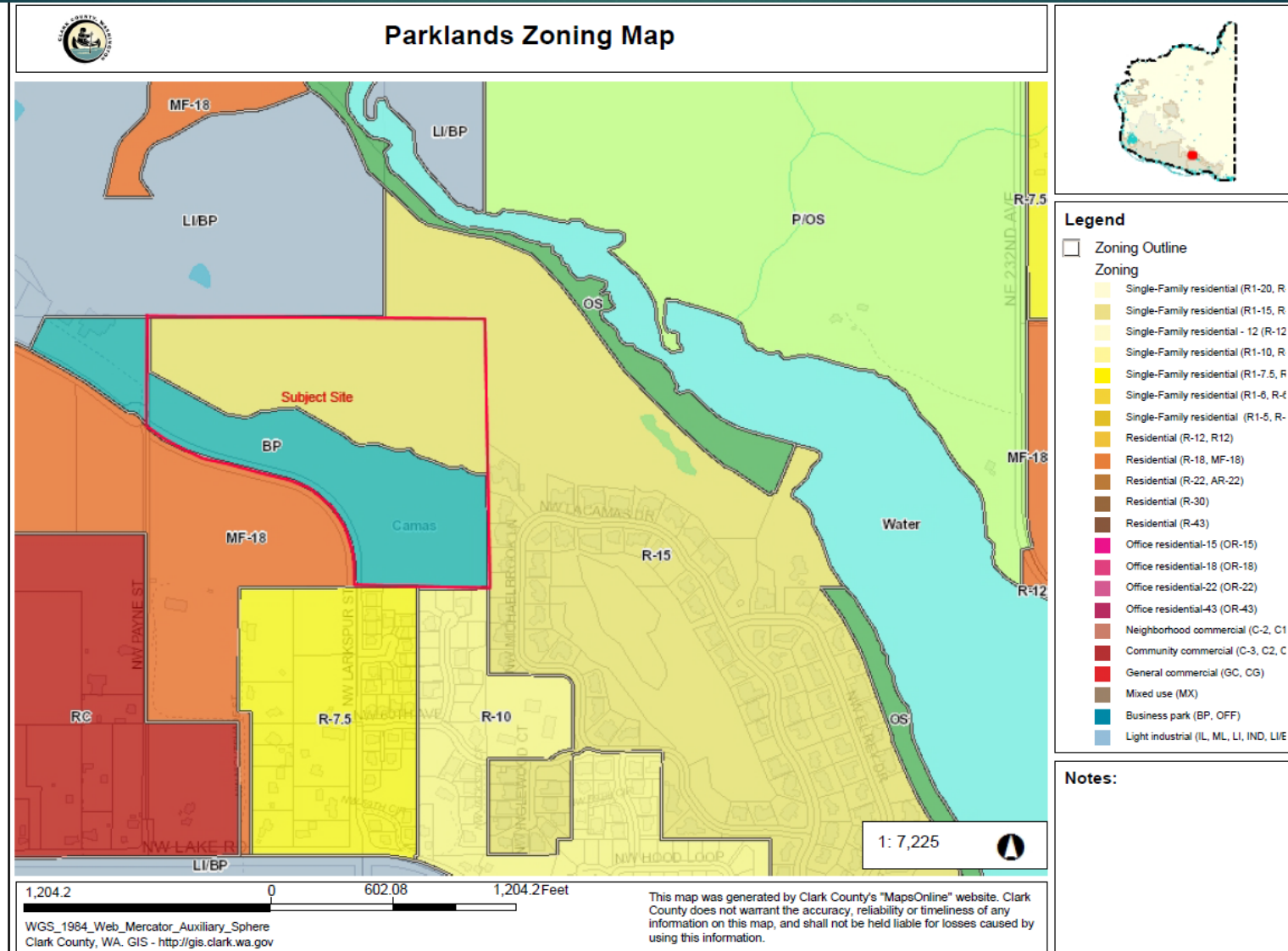


1,204.2 0 602.08 1,204.2 Feet

WGS\_1984\_Web\_Mercator\_Auxiliary\_Sphere  
Clark County, WA - GIS - <http://gis.clark.wa.gov>

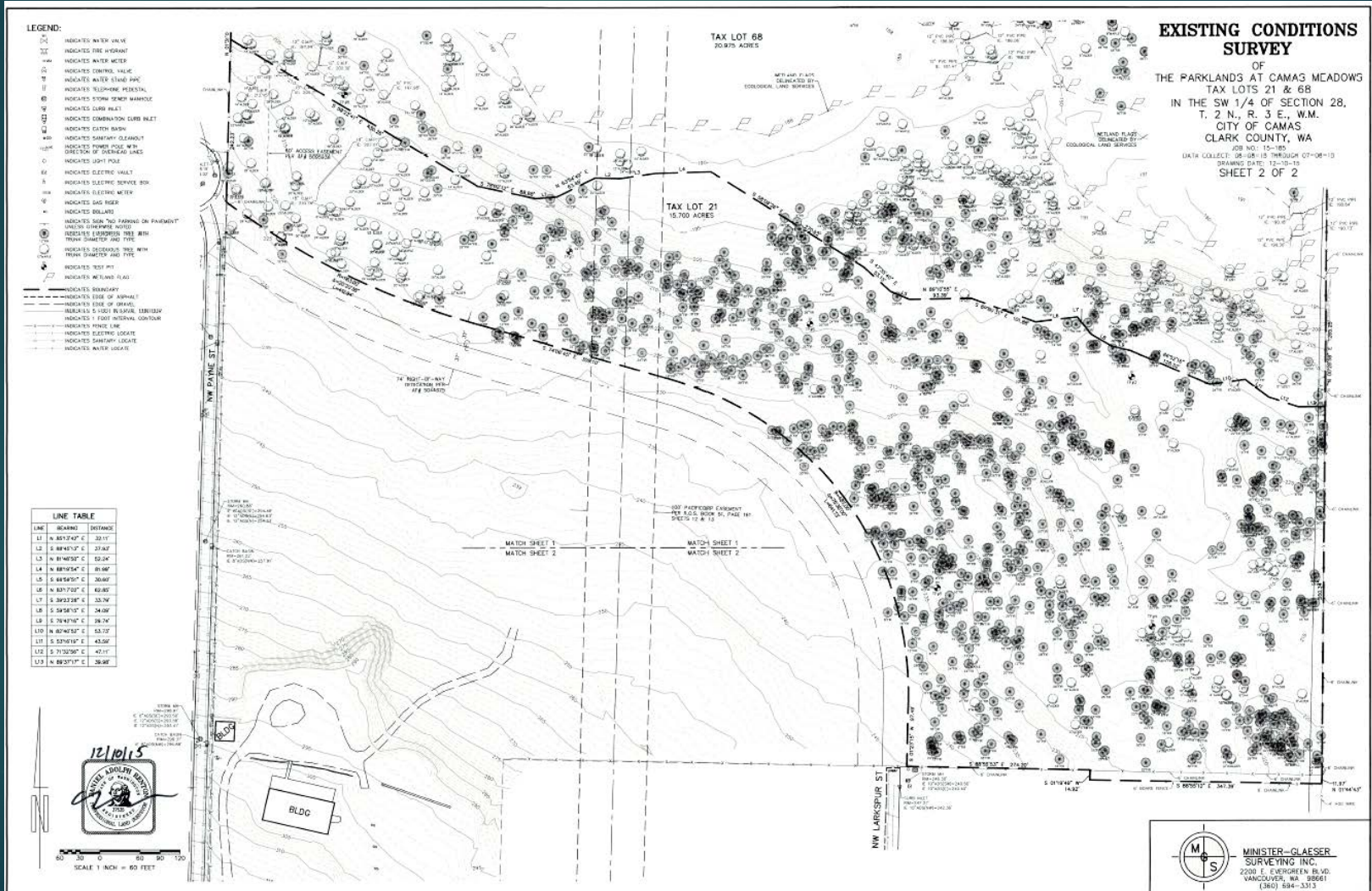
This map was generated by Clark County's "MapsOnline" website. Clark County does not warrant the accuracy, reliability or timeliness of any information on this map, and shall not be held liable for losses caused by using this information.

# Zoning



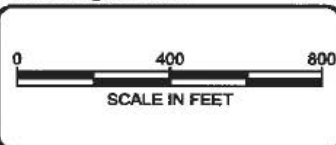
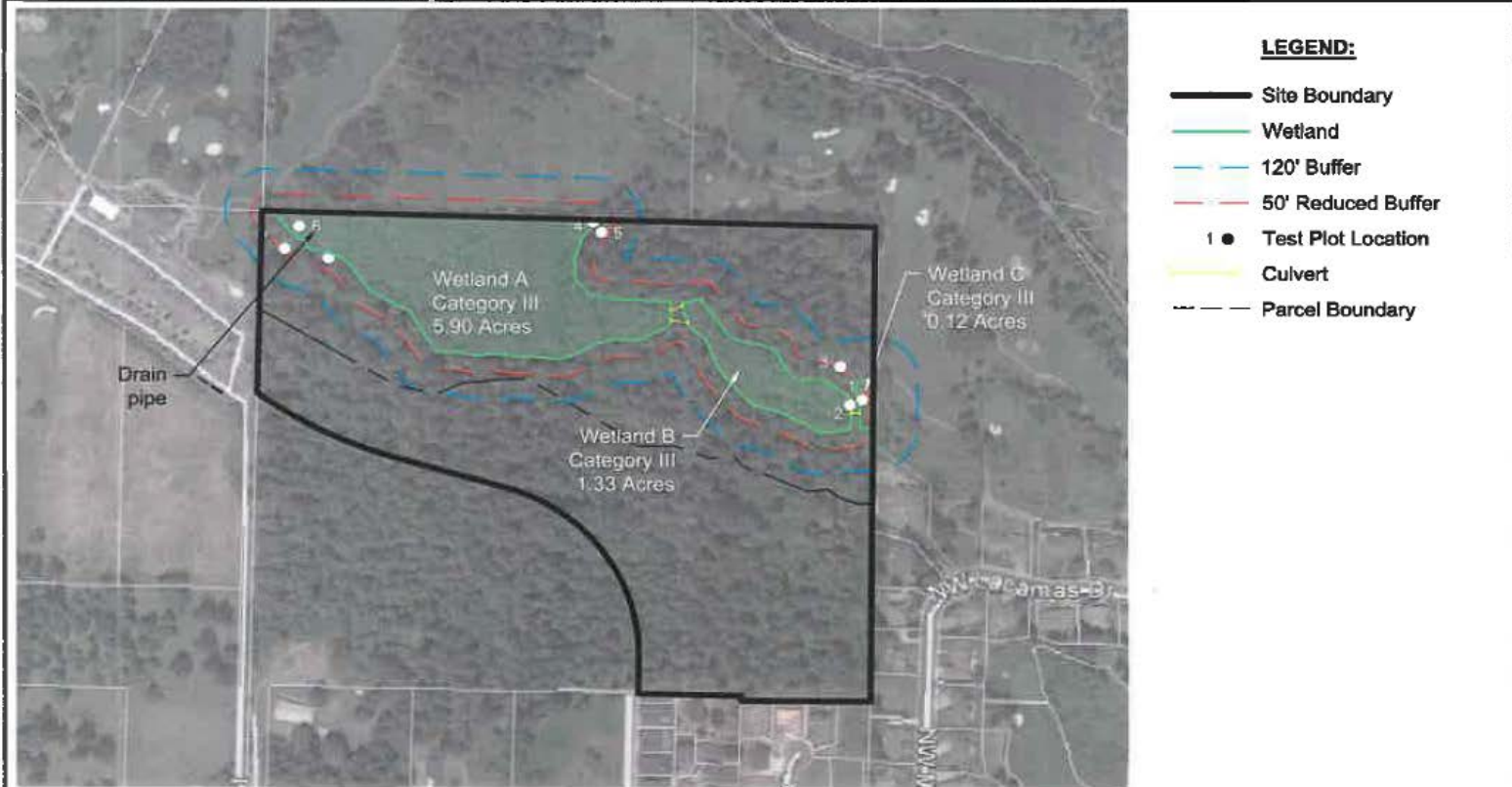


# Site survey continued



# Wetlands

8/12/2016 3:21 PM s:\ELSWA\Clark\Camas\2255-parklands at camas llc\2255.01-chinook property\2255.01-figures\2255.01\_GPS.dwg cpayne



**ECOLOGICAL LAND SERVICES, INC.**

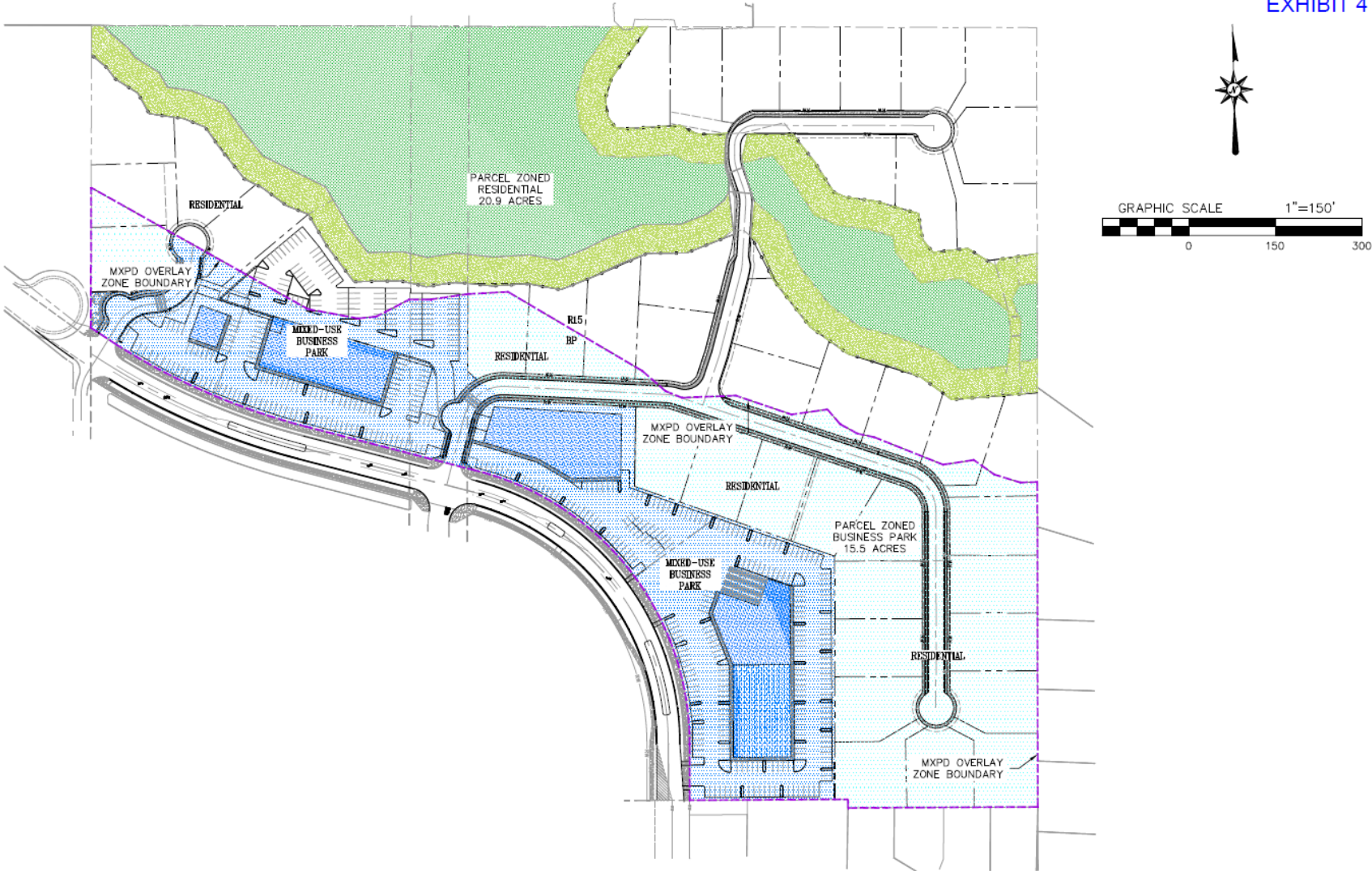
1157 3rd Ave., Suite 220  
Longview, WA 98632  
Phone: (360) 578-1371 Fax: (360) 414-9305

DATE: 8/12/15  
DWN: CDP  
REQ. BY: RA  
PRJ. MGR: TH  
CHK:  
PROJECT NO:  
2255.01

Figure 2  
**SITE MAP**  
Parklands at Camas Meadows  
Parklands at Camas LLC.  
Camas, Clark County, WA  
Section 28, Township 2 N, Range 3 E, W.M.

# Master Plan Overlay

EXHIBIT 4



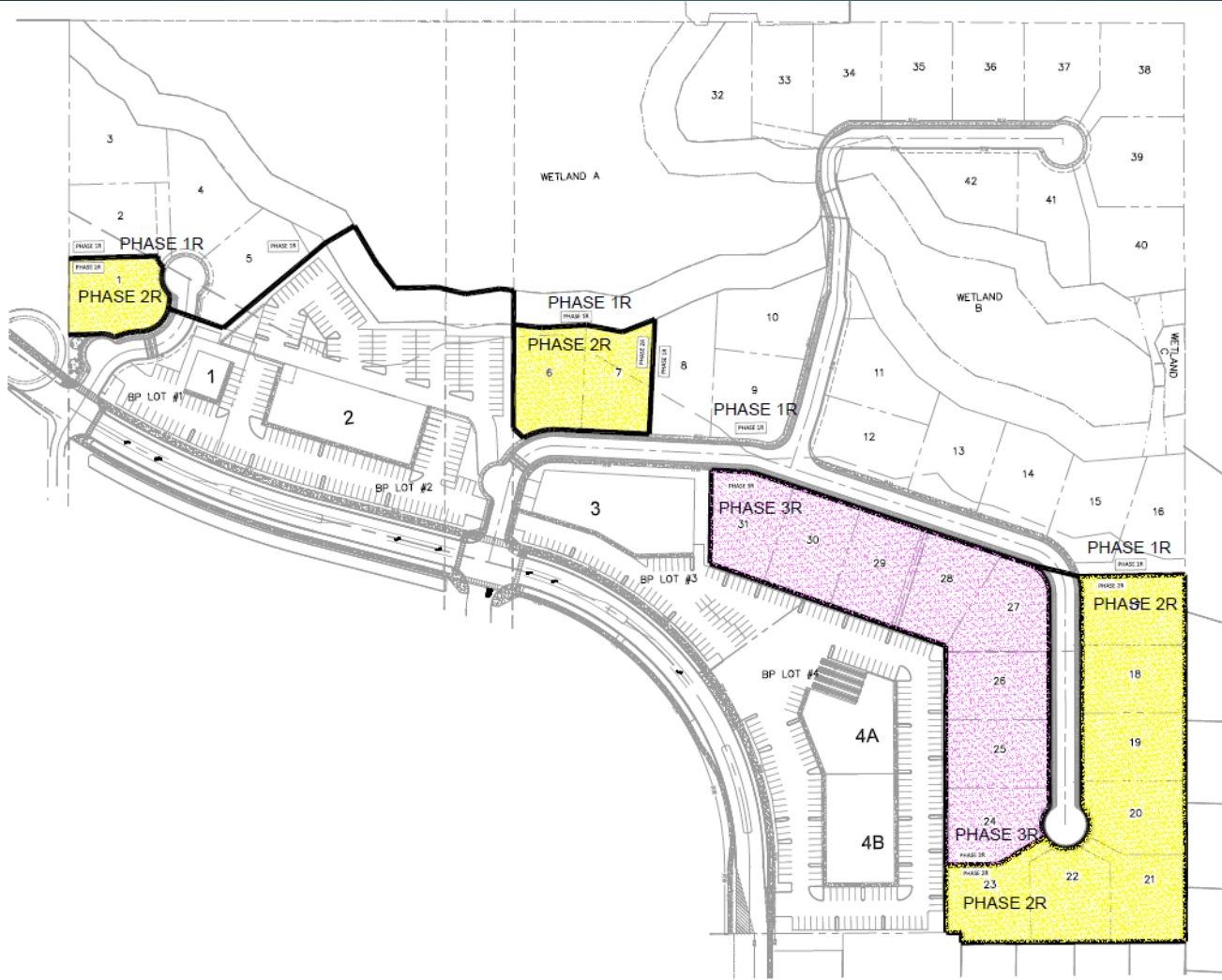
PROPOSED MXP OVERLAY MAP



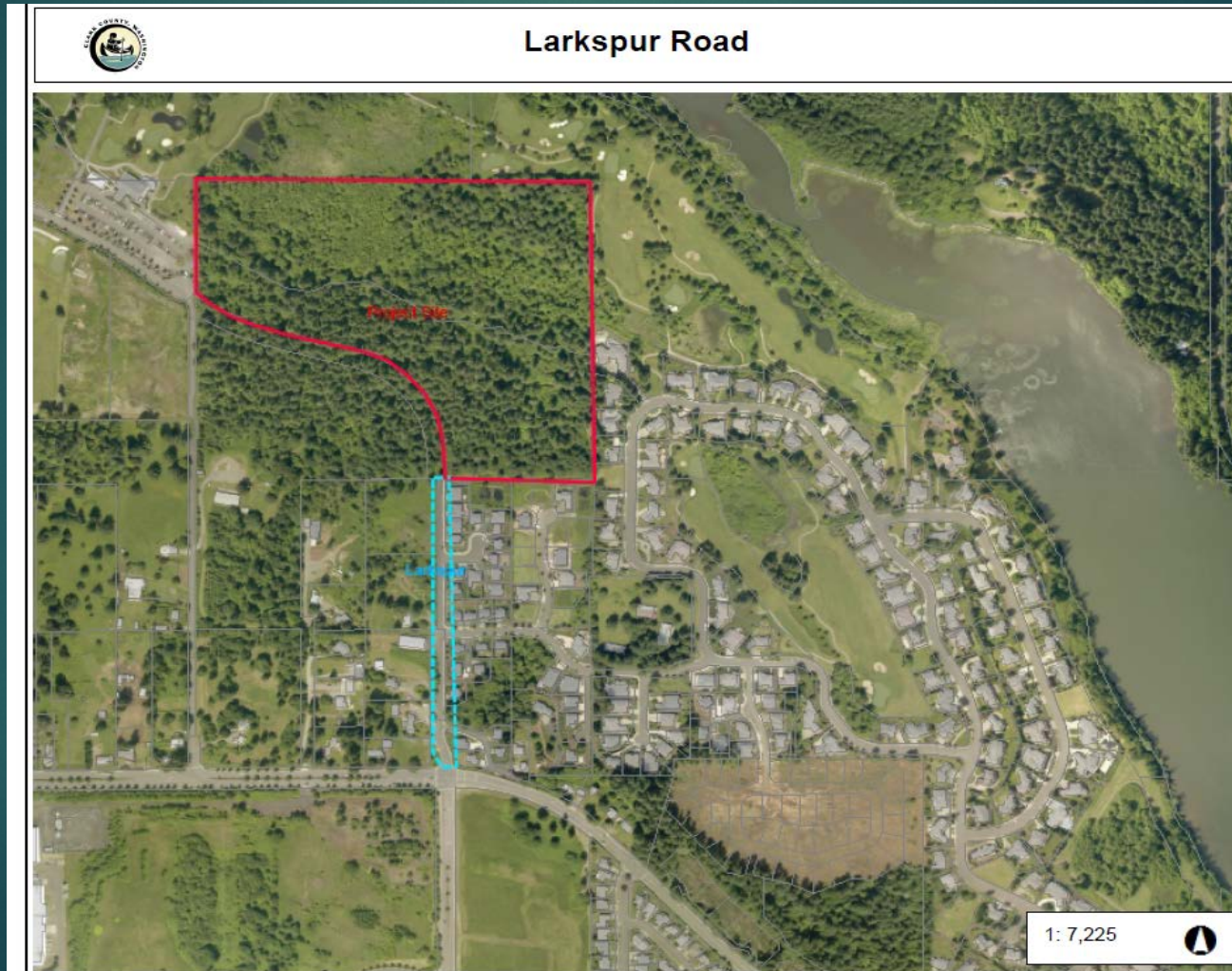


# Phasing Plan

EXHIBIT 3



# Access – Camas Meadows Drive / Larkspur



# Trails (T-1)

