



Community Development Department

Notice of Application

The Village at Camas Meadows

File No. SUB15-04

“NOTICE IS HEREBY GIVEN” that an application for “The Village at Camas Meadows” a 77 lot single-family and 138 multi-family apartment unit residential subdivision development requesting preliminary plat approval was received on September 30, 2015, resubmitted on December 21, 2015 and was deemed technically complete on December 21, 2015. A public hearing is required for the Subdivision, and will be scheduled at a later time. A separate public notice will be mailed to all property owners within 300-feet of the subject development and published in the Post Record, at least 15 days prior to the scheduled hearing.

LOCATION: The 19.5 acre site is zoned multi-family residential (MF-18) and located east of NW Payne Street between NW Lake Road and NW Camas Meadows Drive in the SW 1/4 of Section 28, Township 2 North, Range 3 East; Camas, WA. Parcel Number includes 175951-000.

APPLICATION MATERIALS: The application included the following: project narrative; preliminary plan set; preliminary storm water report; soil analysis report; traffic report; critical areas report; tree survey & report; State Environmental Policy Act (SEPA) checklist; and other required submittal documents. These documents are available for viewing at the Community Development Department (616 NE 4th Avenue, Camas, WA) during regular business hours Monday – Friday 8am-5pm.

Questions/Comments: For questions related to this application, please contact Lauren Hollenbeck, Senior Planner, at (360) 817-1568 ext. 4253 or by email at communitydevelopment@cityofcamas.us.

APPLICANT/ CONTACT:

HARB ENGINEERING, INC.
 CONTACT PERSON: GUS HARB, PE
 701 COLUMBIA ST., SUITE 111
 VANCOUVER, WA 98660
 PHONE: (360) 695-6520
 EMAIL: guss@harbengineering.com

OWNER:

CHLOE INVESTMENT, LLC
 701 COLUMBIA ST., SUITE 111
 VANCOUVER, WA 98660

SURVEYOR:

MINISTER & GLAESER SURVEYING, LLC
 CONTACT PERSON: DAVE DENNY, PLS
 2200 E. EVERGREEN BLVD
 VANCOUVER, WA 98661
 PHONE: 360-694-3313

GEOTECHNICAL ENGINEER:

COLUMBIA WEST ENGINEERING, INC.
 CONTACT PERSON: DANIEL LEHTO, PE, GE
 11917 NE 95TH ST.
 VANCOUVER, WA 98682
 PHONE: 360-823-2900

ARBORIST:

AKS ENGINEERING AND FORESTRY VANCOUVER, LLC
 CONTACT PERSON: BRYCE HANSON, PE, LSIT, CERTIFIED ARBORIST
 9600 NE 126TH AVE., STE 2520
 VANCOUVER, WA 98682
 PHONE: 360-882-0419

PARCEL INFORMATION:

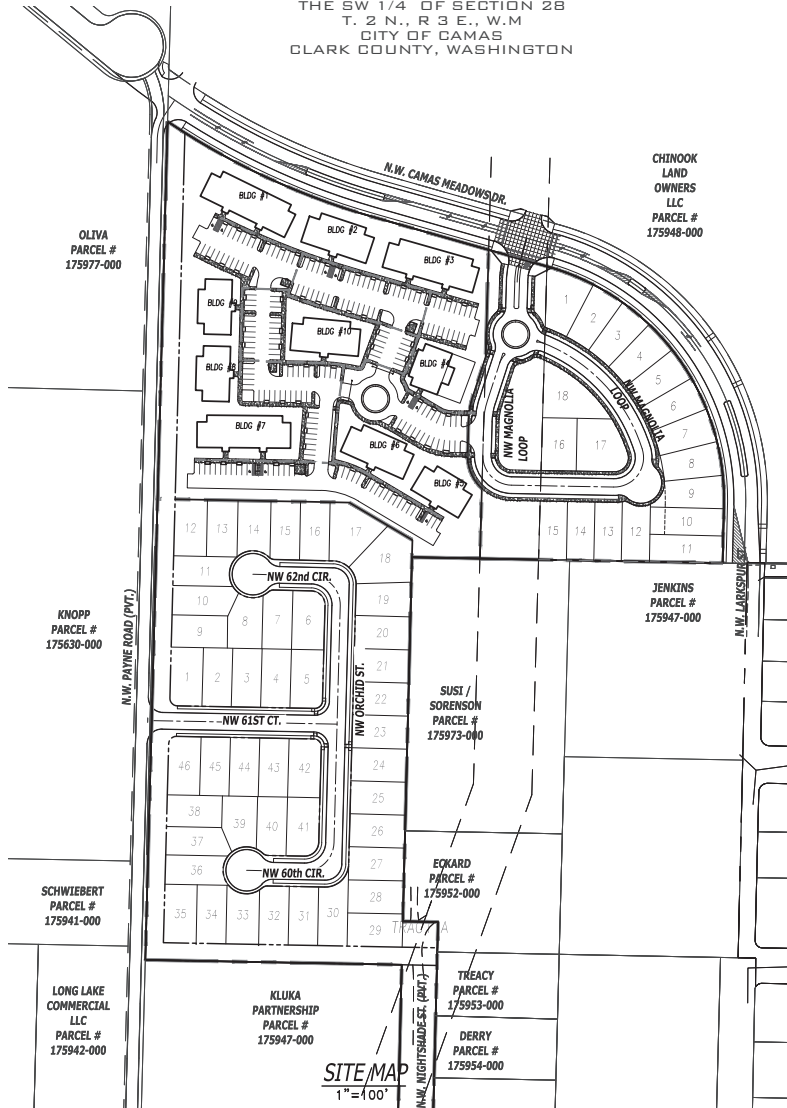
PARCEL # 175951-000
 PARCEL AREA IS: 19.5 ACRES

THE VILLAGE AT CAMAS MEADOWS

PARCEL # 175951-000
 IN A PORTION OF THE EAST
 HALF AND THE WEST HALF OF
 THE SW 1/4 OF SECTION 28
 T. 2 N., R 3 E., W.M
 CITY OF CAMAS
 CLARK COUNTY, WASHINGTON



VICINITY MAP
NOT TO SCALE



SITE MAP
1" = 100'

SHEET INDEX:

- P-00 COVER SHEET
- P-01 NOTES AND LEGEND
- P-02 EXISTING CONDITIONS PLAN
- P-03 EXISTING TREE SURVEY
- P-04 EXISTING TREE SURVEY
- P-05 PRELIMINARY PLAT COVER SHEET
- P-06 PRELIMINARY PLAT [PHASE 1]
- P-07A PRELIMINARY PLAT [PHASE 2]
- P-07B PRELIMINARY PLAT [PHASE 2]
- P-08 PRELIMINARY PLAT [PHASE 3]
- P-09 PRELIMINARY STORM DRAINAGE PLAN [PHASE 1]
- P-10 PRELIMINARY STORM DRAINAGE PLAN [PHASE 1]
- P-11 PRELIMINARY STORM DRAINAGE PLAN [PHASE 1]
- P-12 PRELIMINARY STORM DRAINAGE PLAN [FRONTAGE]
- P-13 PRELIMINARY SANITARY SEWER AND WATER PLAN [PHASE 1]
- P-14 PRELIMINARY SANITARY SEWER AND WATER PLAN [PHASE 2]
- P-15 PRELIMINARY SANITARY SEWER AND WATER PLAN [PHASE 3]
- P-16 PRELIMINARY PUBLIC IMPROVEMENTS PLAN AND PROFILE [NW CAMAS MEADOWS DR.]
- P-17 PRELIMINARY PUBLIC IMPROVEMENTS PLAN [NW PAYNE ST. AND NW LAKE RD.]
- P-18 PRELIMINARY TREE SURVEY PLAN [PHASE 1]
- P-19 PRELIMINARY TREE SURVEY PLAN [PHASE 2]
- P-20 PRELIMINARY TREE SURVEY PLAN [PHASE 3]
- P-21 PRELIMINARY TREE LIST
- P-22 PRELIMINARY STREET LIGHTING AND TREE PLAN [PHASE 1]
- P-23 PRELIMINARY STREET LIGHTING AND TREE PLAN [PHASE 2]
- P-24 PRELIMINARY STREET LIGHTING AND TREE PLAN [PHASE 3]
- P-25 PRELIMINARY STREET LIGHTING AND TREE PLAN [NW CAMAS MEADOWS DR.]
- P-26 PRELIMINARY SITE DETAILS

HARB ENGINEERING
 LAND DEVELOPMENT PLANNING ENGINEERING
 CONSTRUCTION MANAGEMENT
 701 COLUMBIA STREET, SUITE 111 VANCOUVER, WA 98660
 PHONE: (360) 695-6520 WWW.HARBENGINEERING.COM



**THE VILLAGE AT
CAMAS MEADOWS**

SHEET NAME:

COVER SHEET

DRAWN BY:
B.S.G.

DESIGNED BY:
B.S.G.

CHECKED BY:
G.G.H.

SHEET #
P-00