

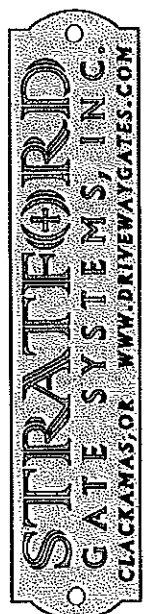
- GENERAL NOTES:**
1. PLAN BASED ON SGA PARKER VILLAGE PHASE I DOCUMENTS
 2. LOCATION DIMENSIONS ARE APPROXIMATE & SHOULD BE VERIFIED WITH SGA BASE PLANS
 3. REFER TO ELEVATION & OTHER PLAN DRAWINGS FOR ADDITIONAL INFORMATION

- PLAN KEYNOTES:**
- A. GATE COLUMN W/STONE VENEER TYPE I
 - B. WALKWAY COLUMN W/STONE VENEER TYPE I
 - C. METAL MONUMENT SIGN
 - D. PRECAST OR STONE CAP BENCH ON STONE VENEER TYPE II WALL
 - E. MAIN MONUMENT BODY W/STONE VENEER I
 - F. PRECAST OR STONE CAP ON STONE VENEER III
 - G. GRAVEL PATHWAY W/ ACCENT STONES
 - H. LANDSCAPING PLANTS T.B.D.

Reviewed for code Compliance, Plan approval shall not prevent the Building Division from requiring corrections of errors or stopping construction that is in violation of City of Camas Code.



1 ENLARGED ENTRY/MONUMENT PLAN
SCALE: 3/16" = 1'-0"



PARKER VILLAGE
GATE COLUMNS &
MONUMENT SIGN

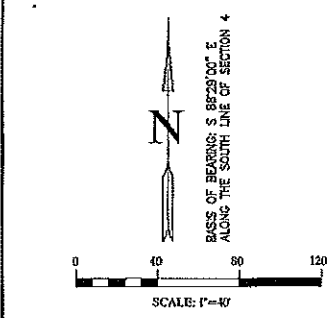
© 2015 SGS, INC.
ALL INFORMATION CONTAINED HEREIN IS
THE INTELLECTUAL PROPERTY OF
STRATFORD GATE SYSTEMS, INC.
CLACKAMAS, OR 97015
P: 503.722.1911
OCCB# 150364

SHEET DATE 2015.10.01
PLN BY
1.1 WRBLAND

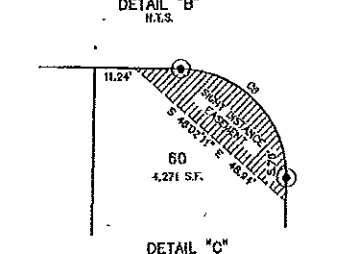
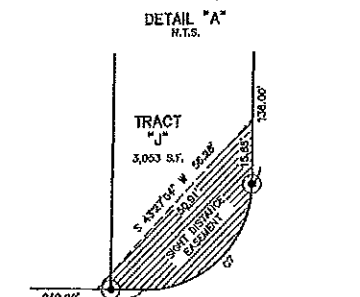
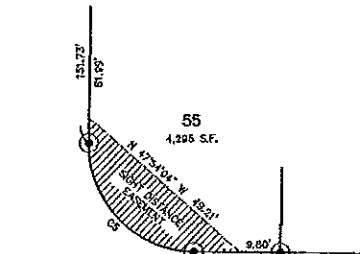
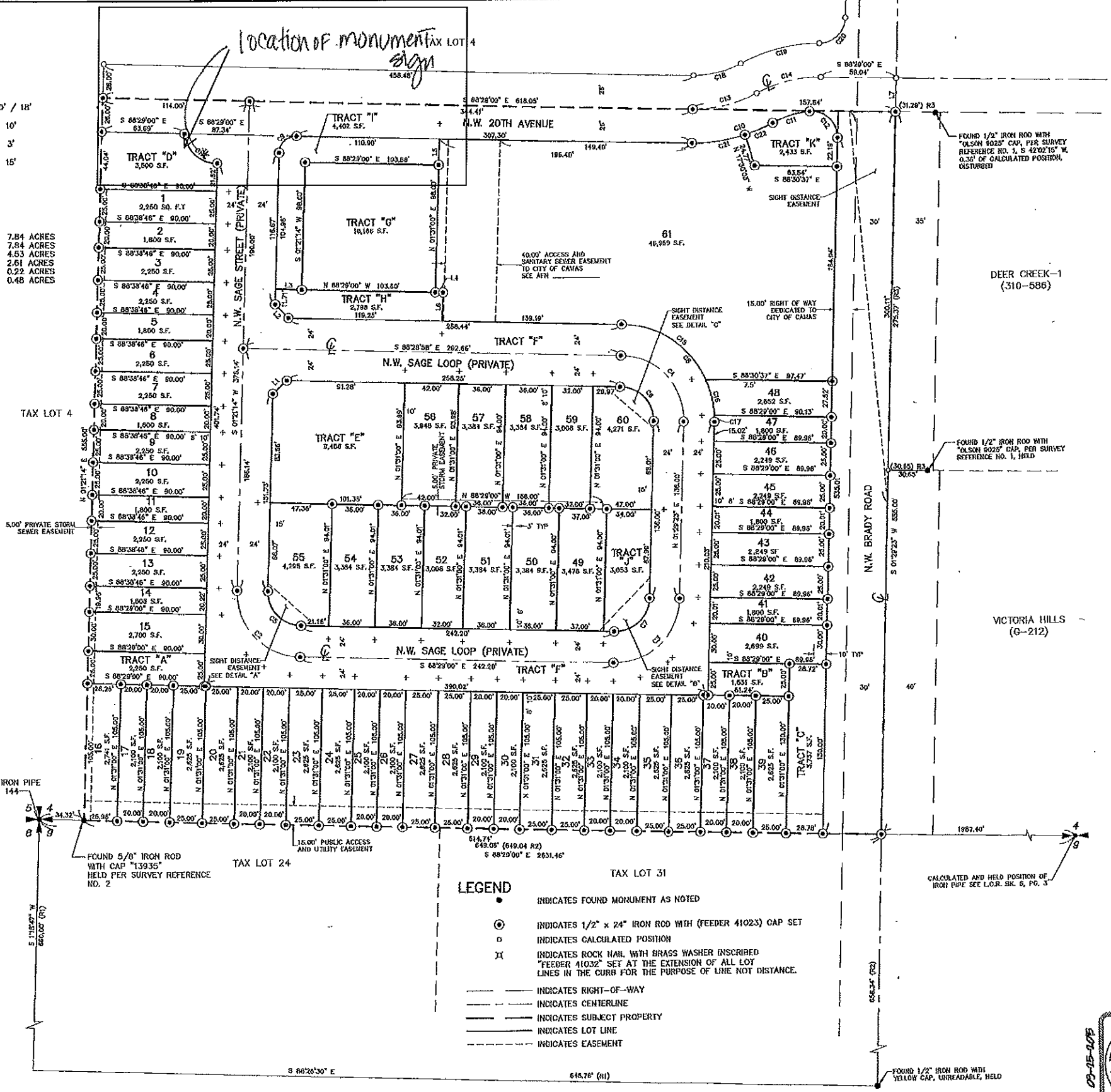
PREPARED BY:
KPF SURVEYING, INC.
1514 N.E. 267TH AVE.
CAMAS, WA. 98607
(360) 834-0174

MINIMUM BUILDING SETBACKS:
FRONT SETBACK / GARAGE SETBACK 10' / 18'
REAR SETBACK 10'
SIDE SETBACK 3'
STREET SIDE SETBACK 15'

LAND INVENTORY
TOTAL ACRES 7.84 ACRES
TOTAL DEVELOPED ACRES 4.53 ACRES
TOTAL LOT AREA 2.61 ACRES
TOTAL INFRASTRUCTURE ACRES 0.22 ACRES
TOTAL ACRES OF RECREATIONAL OPEN SPACES 0.48 ACRES



PARKER VILLAGE SUBDIVISION
A SUBDIVISION OF A PORTION OF THE
SW 1/4 OF THE SW 1/4
OF SECTION 04
T. 1 N., R. 3 E., W.M.
CITY OF CAMAS
CLARK COUNTY, WASHINGTON
SHEET 2 OF 2



LINE TABLE

LINE	LENGTH	BEARING
L1	14.61'	S42°25'08\"/>

CURVE TABLE

CURVE	RADIUS	DELTA	ARC DIST.	CHORD BEARING	CHORD DIST.
C1	25.50	85°10'06\"/>			

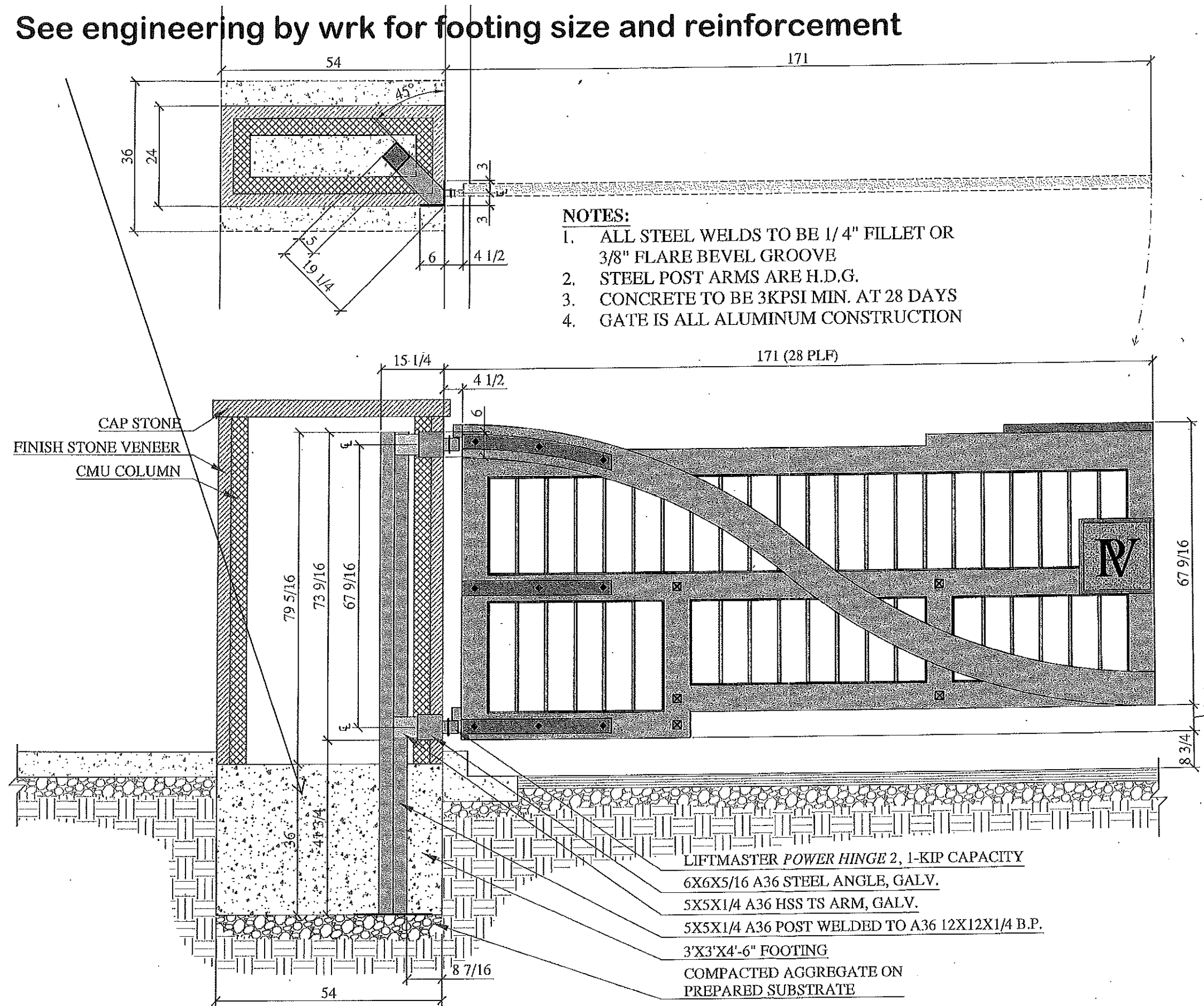
- LEGEND**
- INDICATES FOUND MONUMENT AS NOTED
 - ⊙ INDICATES 1/2" x 24" IRON ROD WITH (FEEDER 41023) GAP SET
 - ⊠ INDICATES CALCULATED POSITION
 - ⊞ INDICATES ROCK NAIL WITH BRASS WASHER INSCRIBED "FEEDER 41032" SET AT THE EXTENSION OF ALL LOT LINES IN THE CURB FOR THE PURPOSE OF LINE NOT DISTANCE.
 - INDICATES RIGHT-OF-WAY
 - INDICATES CENTERLINE
 - INDICATES SUBJECT PROPERTY
 - INDICATES LOT LINE
 - - - INDICATES EASEMENT



DATE: 9-25-15
SCALE: 1"=40'
JOB NO.: 15-056
CALC. BY: KPF
DRAWN BY: GLF
CHECKED BY: KPF
SHEET 2 OF 2

KPF
SURVEYING, INC.
1514 N.E. 267TH AVE. CAMAS, WA 98607
360-834-0174 FAX: 360-835-0155

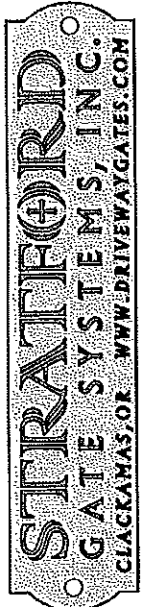
See engineering by wrk for footing size and reinforcement



NOTES:

1. ALL STEEL WELDS TO BE 1/4" FILLET OR 3/8" FLARE BEVEL GROOVE
2. STEEL POST ARMS ARE H.D.G.
3. CONCRETE TO BE 3KPSI MIN. AT 28 DAYS
4. GATE IS ALL ALUMINUM CONSTRUCTION

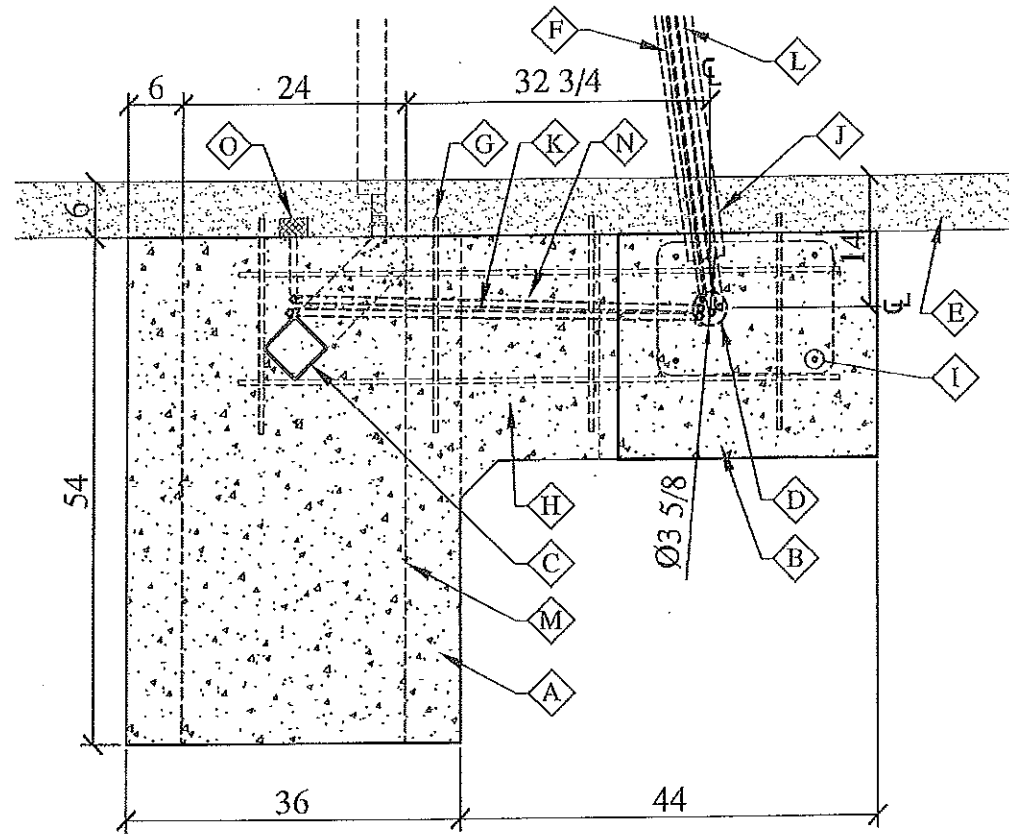
- LIFTMASTER POWER HINGE 2, 1-KIP CAPACITY
- 6X6X5/16 A36 STEEL ANGLE, GALV.
- 5X5X1/4 A36 HSS TS ARM, GALV.
- 5X5X1/4 A36 POST WELDED TO A36 12X12X1/4 B.P.
- 3'X3'X4'-6" FOOTING
- COMPACTED AGGREGATE ON PREPARED SUBSTRATE



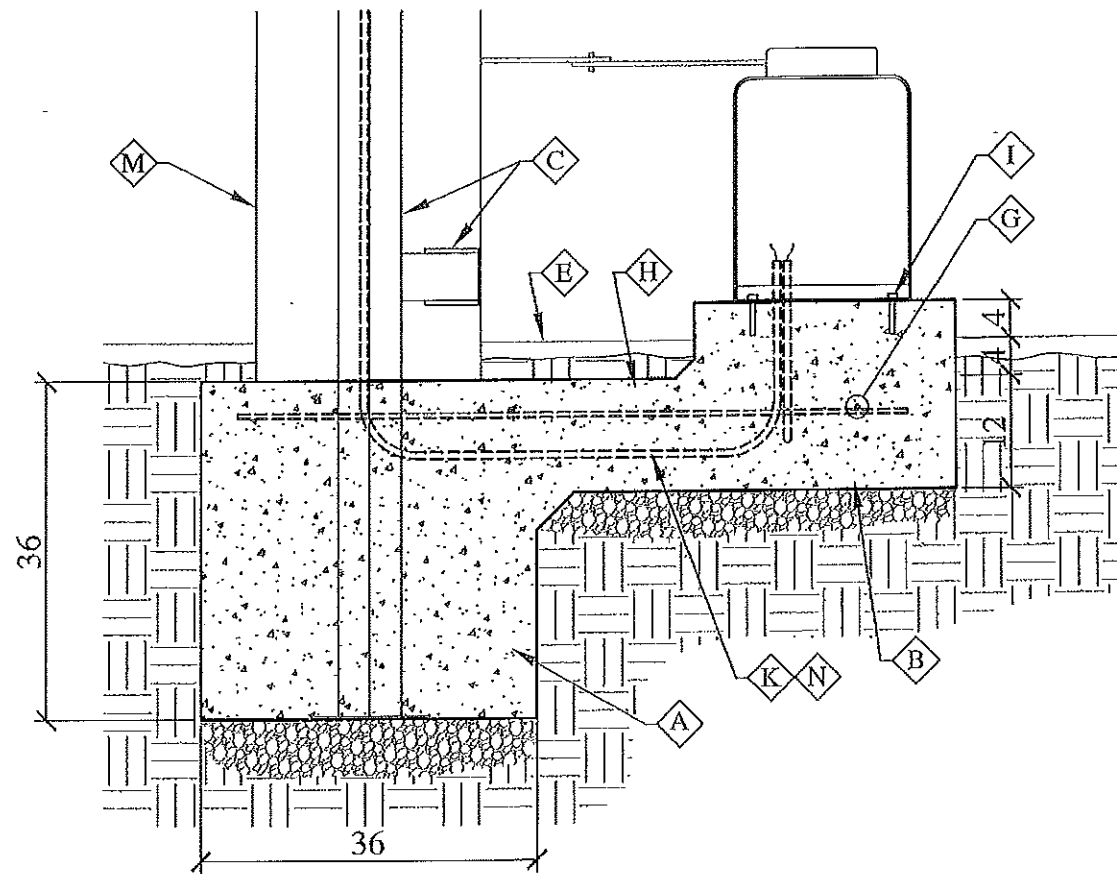
PARKER VILLAGE
ENTRY & EXIT GATE
SYSTEMS

© 2015 SGS, INC.
ALL RIGHTS RESERVED
THE INTELLECTUAL PROPERTY OF
STRATFORD GATE SYSTEMS, INC.
128 KAMAS DRIVE, RD. 1
CLACKAMAS, OR 97015
P: 503.722.7700
F: 503.722.1911
CCCB# 150284

SHEET DATE
STRCTR 2015.10.08
1.0 BY WRBLAND



FOOTING PLAN



FOOTING SECTION

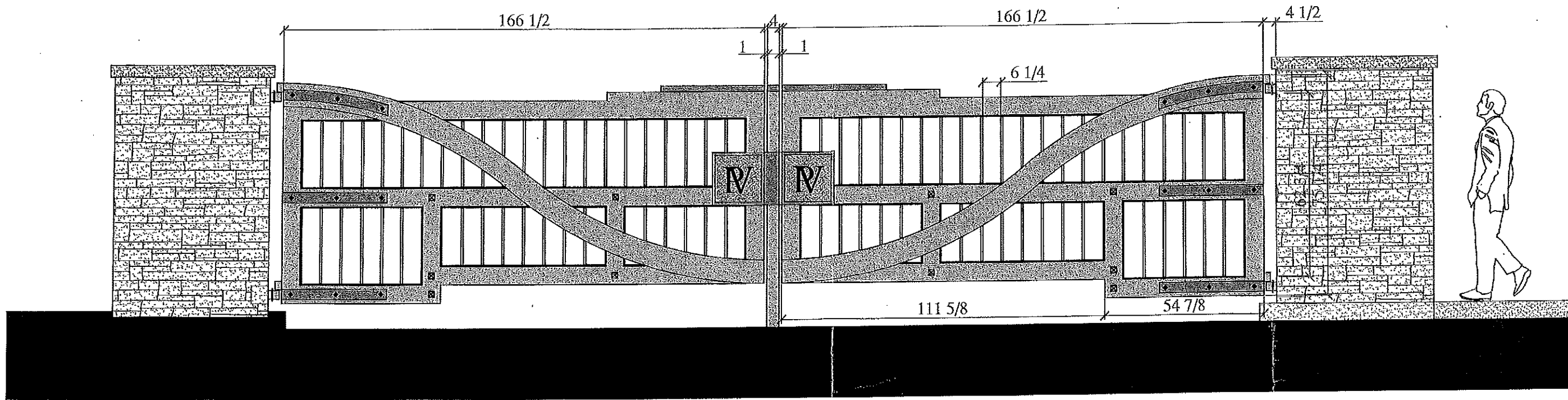
1 COLUMN/OPERATOR FOOTING
SCALE: 5/8" = 1'-0"

GENERAL NOTES:

1. ROTATE DRAWING FOR FOOTING ON OPPOSITE SIDE OF ROAD
2. PROVIDE CHAMFERED RE-ENTRANT CORNERS ON CONCRETE POUR
3. PROVIDE MIN. (2) #4 REBAR CONNECTING POST & OPERATOR FOOTINGS
4. REFER TO ADDITIONAL DRAWINGS FOR FURTHER INFORMATION

KEYNOTES:

- A. 4'-6" X 3' X 3' POST FOOTING
- B. 2' X 1'-8" X 2'-4" OPERATOR FOOTING
- C. 5X5 HSS TS GATE POST & ARMS
- D. LOCATION OF CONDUIT STUB-UPS INTO OPERATOR
- E. (E) CURB
- F. 1/2" CONDUIT TO CENTER POST (AT ENTRY OPERATOR)
- G. REBAR EPOXIED INTO OUTSIDE FACE OF (E) GUTTER CURB
- H. TIE FOOTINGS TOGETHER IN SINGLE POUR
- I. CSW200UL OPERATOR TO S.O.G. W/ (4) 1/2" Ø EXPANSION ANCHORS
- J. 4" CONDUIT CROSSING TO OPPOSITE OPERATOR
- K. FIRE-STROBE 3/4" CONDUIT TO OPERATOR
- L. (2) 3/4" Ø CONDUIT RUNS TO KEYPAD
- M. OUTLINE OF COLUMN ABOVE
- N. PHOTO-EYE 3/4" CONDUIT TO OPERATOR
- O. PHOTO-EYE CENTERED ON COLUMN WIDTH



2 ENLARGED GATE ELEVATION
SCALE: N.T.S.

GENERAL NOTES:

1. MONUMENT SIGNAGE & INTEGRATION WITH ENTRY GATES IS CONCEPTUAL ONLY.
2. STONE VENEER TYPES T.B.D.
3. LANDSCAPE PLANTS NOT SHOWN IN ELEVATION FOR CLARITY

KEYNOTES:

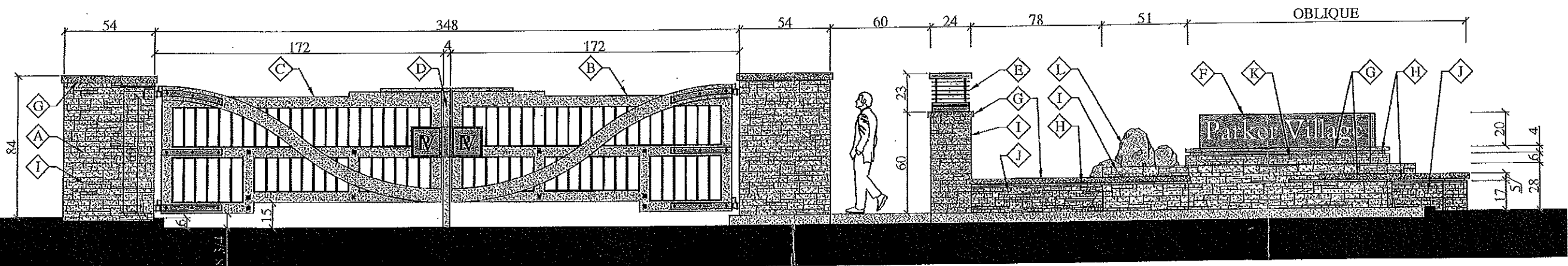
- A. STONE GATE COLUMN
- B. ENTRY GATE
- C. EXIT GATE
- D. DUAL MAGLOCK POST ASSEMBLY
- E. LIGHT ON WALKWAY COLUMN
- F. METAL MONUMENT SIGNAGE, T.B.D.
- G. PRECAST OR STONE CAP
- H. METAL CHANEL REVEAL
- I. STONE VENEER TYPE I
- J. STONE VENEER TYPE II
- K. STONE VENEER TYPE III
- L. LANDSCAPE BOULDERS

STRATFORD
 GATE SYSTEMS, INC.
 CLACKAMAS, OR WWW.DRIVEWAYGATES.COM

PARKER VILLAGE
 GATE COLUMNS &
 MONUMENT SIGN

© 2015 SGS, INC.
 ALL INFORMATION CONTAINED HEREIN IS
 THE INTELLECTUAL PROPERTY OF
 STRATFORD GATE SYSTEMS, INC.
 12818 SE CARPERS RD.
 CLACKAMAS, OR 97015
 P: 503.722.7700
 F: 503.722.1911
 OCCB# 150384

SHEET
 DATE 2015.10.01
 BY WRBLAND
 1.1



EXTERIOR VIEW OF ENTRY & EXIT GATES
 ENTRY (RIGHT) GATE IS IN-SWING
 EXIT (LEFT) GATE IS OUT-SWING

1 ENTRY/GATE ELEVATION
SCALE: 3/16" = 1'-0"

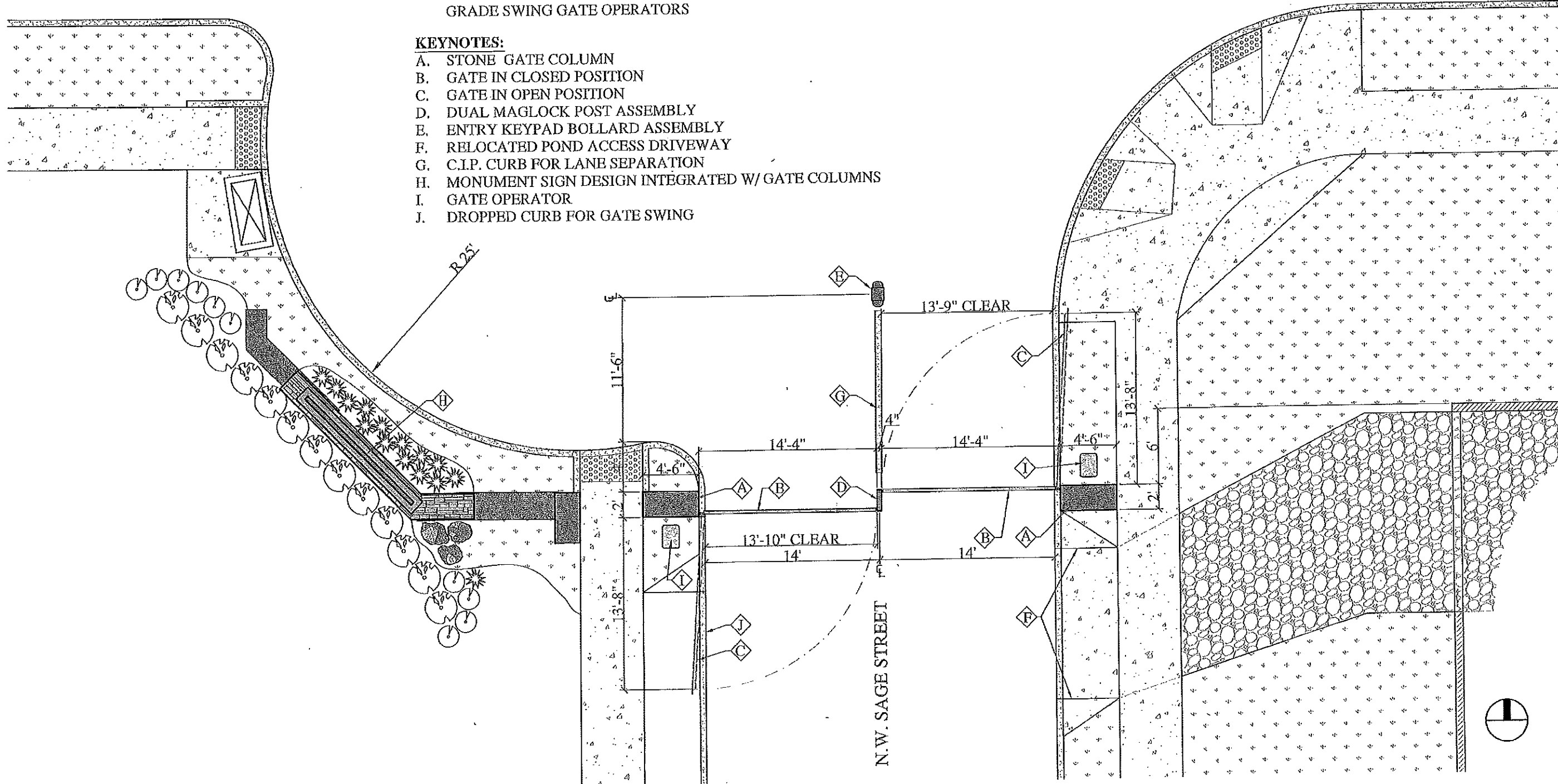
N.W. 20TH AVENUE

GENERAL NOTES:

1. PLAN BASED ON SGA PARKER VILLAGE PHASE I DOCUMENTS
2. LOCATION DIMENSIONS ARE APPROXIMATE & SHOULD BE VERIFIED WITH SGA BASE PLANS
3. EACH GATE LEAF MUST TRAVEL WITH DIRECTION OF TRAFFIC FLOW PER AHJ CODE
4. GATE LAYOUT IS BASED ON USING LIFTMASTER COMMERCIAL GRADE SWING GATE OPERATORS

KEYNOTES:

- A. STONE GATE COLUMN
- B. GATE IN CLOSED POSITION
- C. GATE IN OPEN POSITION
- D. DUAL MAGLOCK POST ASSEMBLY
- E. ENTRY KEYPAD BOLLARD ASSEMBLY
- F. RELOCATED POND ACCESS DRIVEWAY
- G. C.I.P. CURB FOR LANE SEPARATION
- H. MONUMENT SIGN DESIGN INTEGRATED W/ GATE COLUMNS
- I. GATE OPERATOR
- J. DROPPED CURB FOR GATE SWING



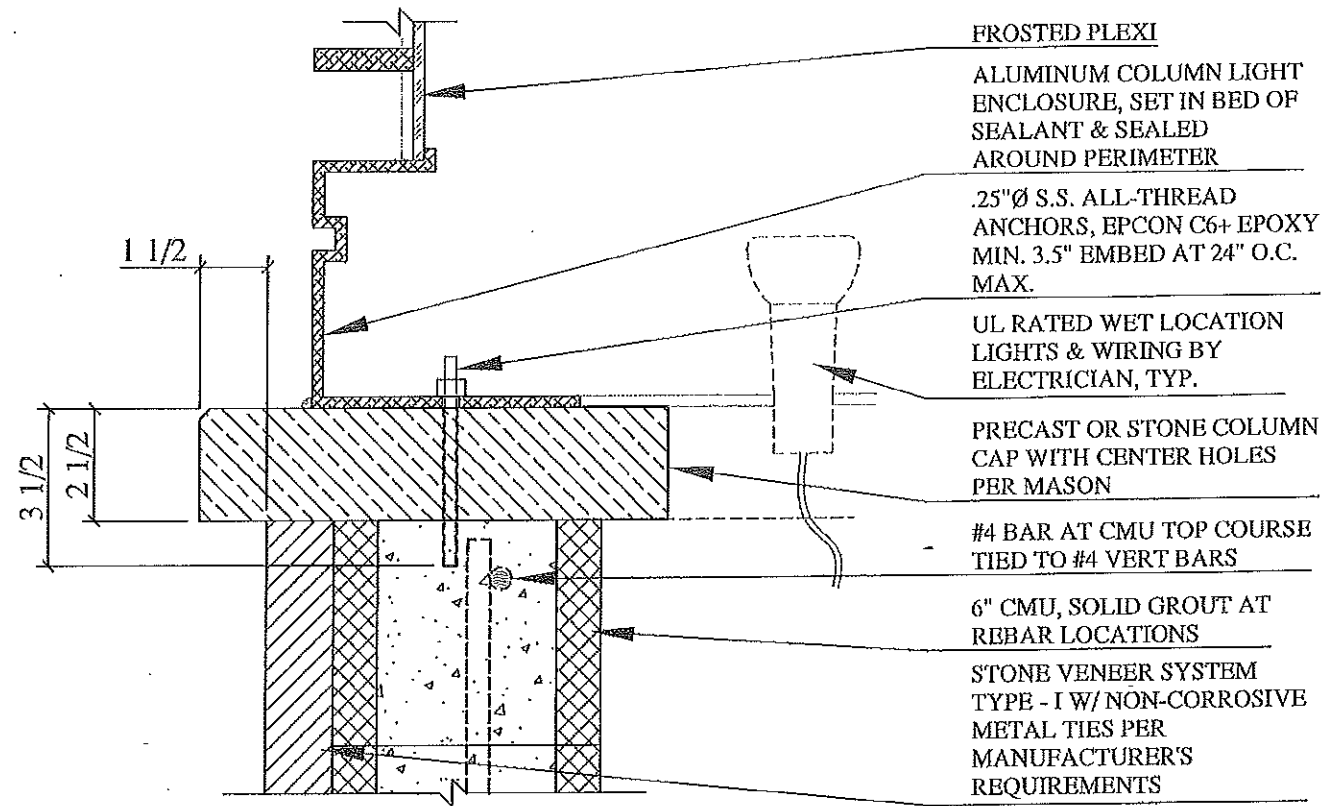
STRATFORD
 GATE SYSTEMS, INC.
 CLACKAMAS, OR WWW.DRIVEWAYGATES.COM

PARKER VILLAGE
 GATE COLUMNS &
 MONUMENT SIGN

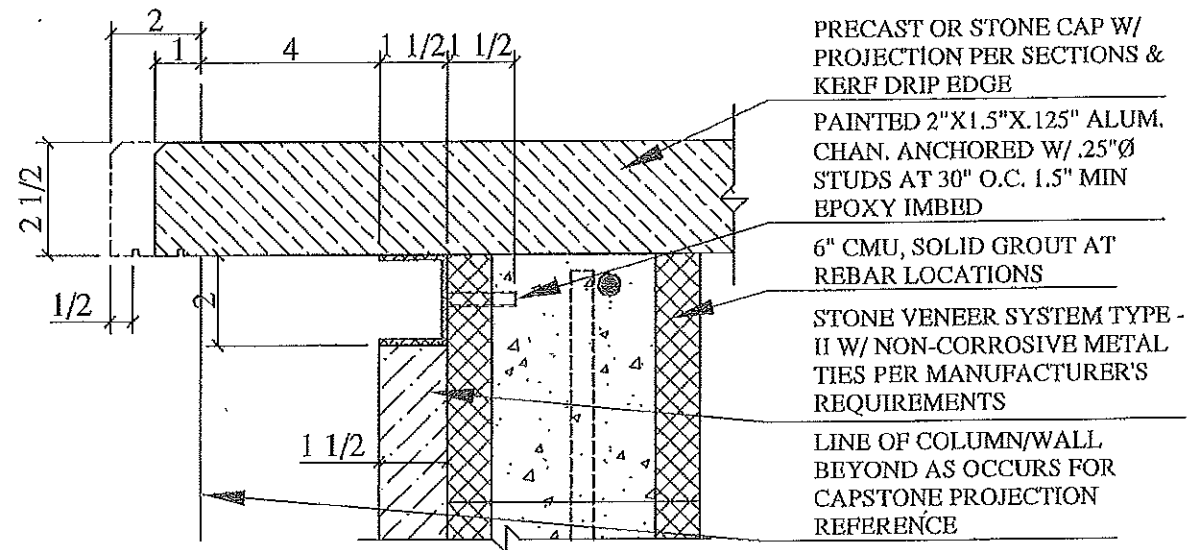
© 2015 SGS, INC.
 ALL INFORMATION CONTAINED HEREIN IS
 THE INTELLECTUAL PROPERTY OF
 STRATFORD GATE SYSTEMS, INC.
 12318 SE CLACKAMAS RD.
 CLACKAMAS, OR 97015
 P: 503.722.7700
 F: 503.722.1911
 OCCB# 150394

SHEET DATE
 2015.10.01
 PLN BY
 1.0 WRBLAND

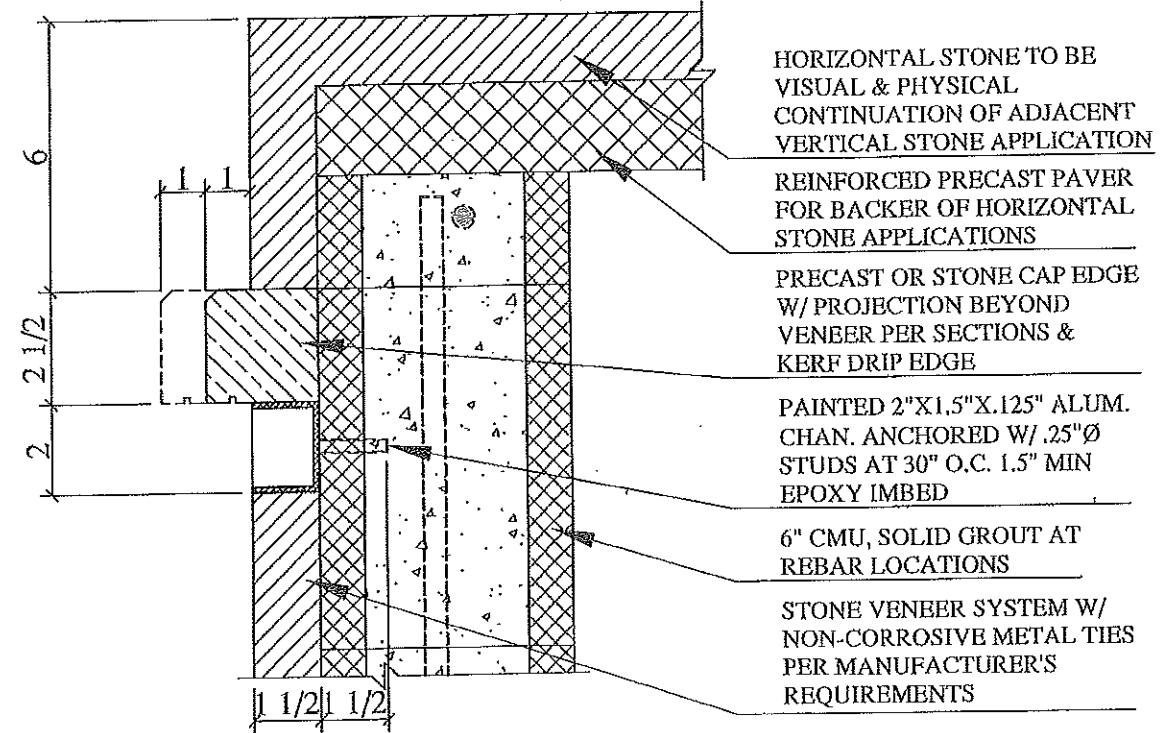
1 ENLARGED ENTRY/MONUMENT PLAN
 SCALE: 1/8" = 1'-0"



3 MONUMENT COLUMN LIGHT CAP DETAIL
SCALE: 3"=1'-0"



1 MONUMENT SEAT DETAIL
SCALE: 3"=1'-0"



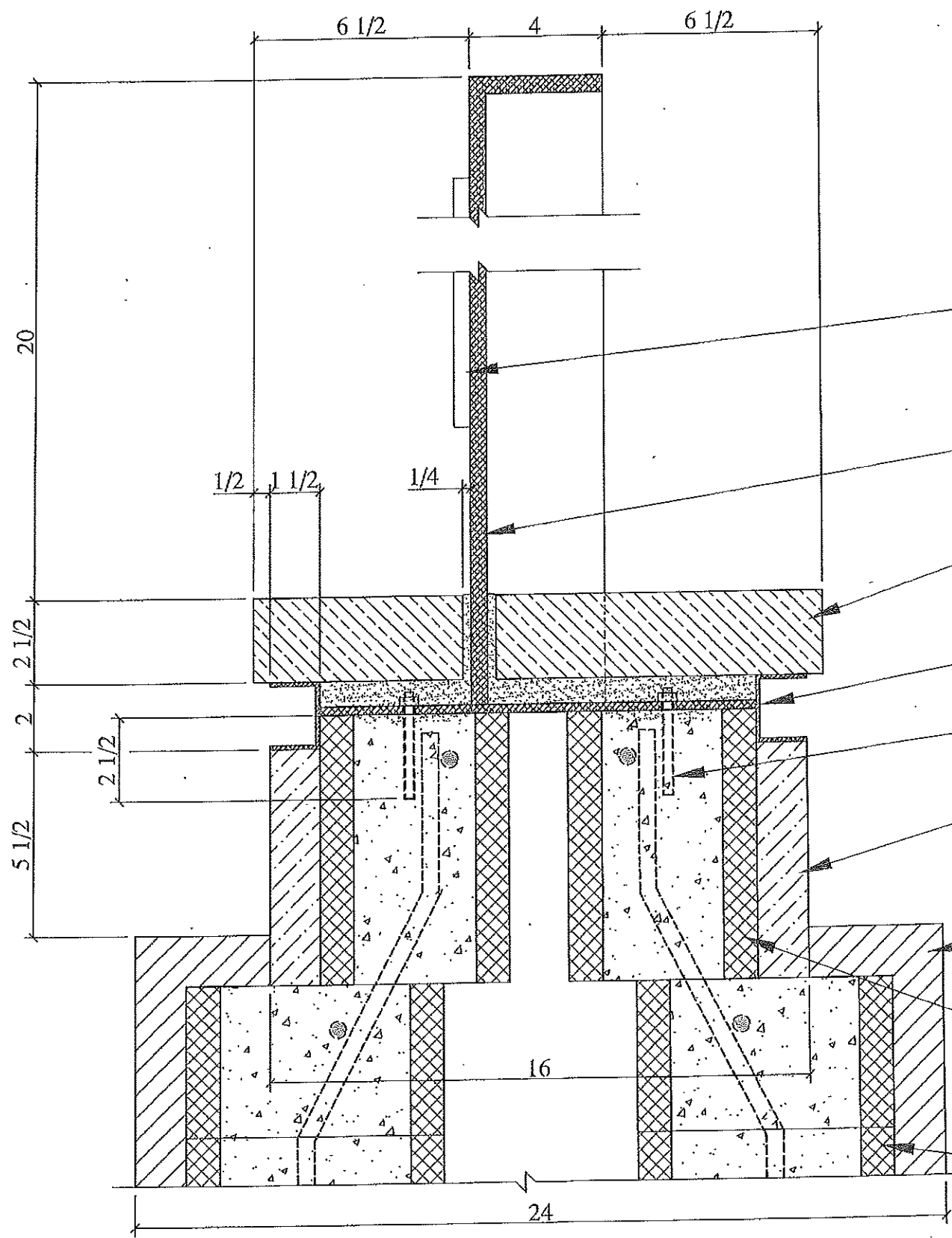
2 MONUMENT SEAT EXTENSION DETAIL
SCALE: 3"=1'-0"

STRATFORD
GATE SYSTEMS, INC.
CLACKAMAS, OR WWW.DRIVEWAYGATES.COM

PARKER VILLAGE
ENTRY MONUMENT

© 2015 SBS, INC.
ALL INFORMATION CONTAINED HEREIN IS
THE PROPERTY OF STRATFORD GATE SYSTEMS, INC.
12318 SE CARPERS RD.
CLACKAMAS, OR 97015
P: 503.722.7700
F: 503.722.1911
0006# 150384

SHEET DATE 2015.10.22
MNT BY WRBLAND
D.1



- ALUMINUM LETTERING PLUG WELDED TO FRONT FACE OF SIGN
- .5" THICK ALUMINUM BLADE SIGN, CENTERED ON WALL & WELDED TO .25" ALUM. BASE PLATE. BASE PLATE TO HAVE HOLES FOR GROUT CONTINUITY & ADHESION
- PRECAST OR STONE CAP SET W/ NON-SHRINK GROUT AROUND PAINTED ALUMINUM SIGN ASSEMBLY
- PAINTED 2"X1.5"X.125" ALUM CHANNEL REVEAL, FULL PERIMETER BASE OF SIGN, WELDED TO .25" ALUM. SIGN BASE PLATE
- .25"Ø S.S. ALL-THREAD ANCHORED W/ EPCON C6+, IMBED 2.5" AT 36" O.C. MAX
- STONE VENEER SYSTEM TYPE - II AT BASE OF RAISED SIGN LOCATION
- STONE VENEER SYSTEM TYPE - I W/ NON-CORROSIVE METAL TIES PER MANUFACTURER'S REQUIREMENTS. MATCHING STONE ACROSS TOP OF WALL AS OCCURS.
- STEPPED-IN 6" CMU W/ REINFORCING PER SECTION. LOCATE CMU BASED ON ACHIEVING OVERALL OUTER FACE DIMENSION OF VENEER
- LOWER 8" CMU WALL W/ REINFORCING PER SECTION. SET CMU BASED ON ACHIEVING OVERALL OUTER FACE DIMENSION OF VENEER

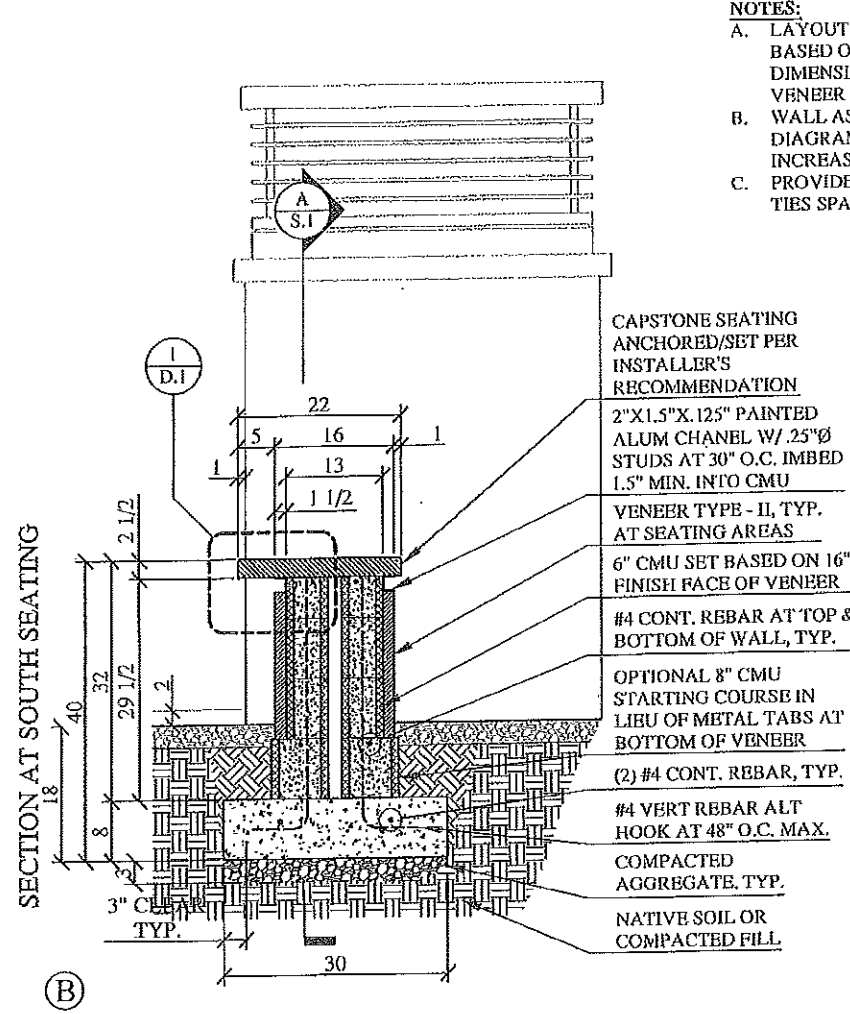
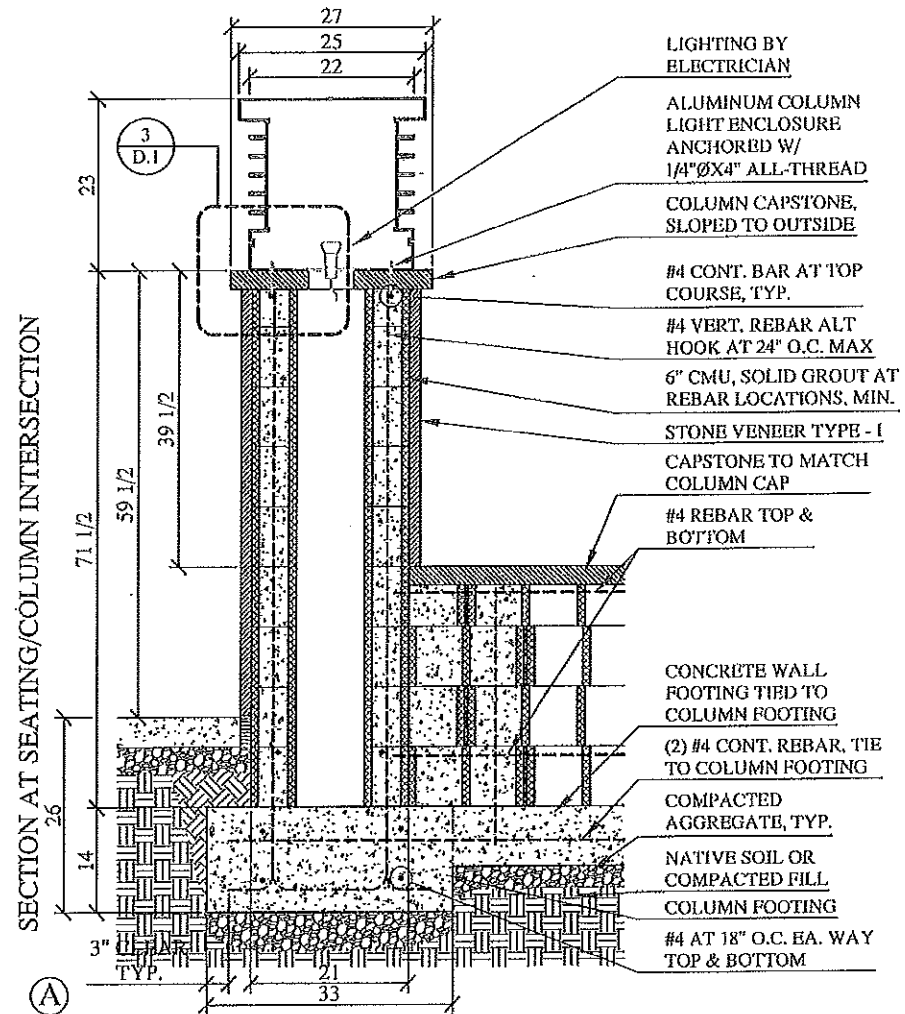
1 MONUMENT SIGN DETAIL
SCALE: 3"=1'-0"



PARKER VILLAGE
ENTRY MONUMENT

© 2015 SGS, INC.
ALL INFORMATION CONTAINED HEREIN IS UNCLASSIFIED EXCEPT WHERE SHOWN OTHERWISE.
STRATFORD GATE SYSTEMS, INC.
12318 SE DAPPS RD.
CLACKAMAS, OR 97015
P: 503.722.7700
F: 503.722.1911
OCC# 150384

SHEET DATE 2015.10.22
MNT BY WRBLAND
D.2



NOTES:
 A. LAYOUT OF CMU TO BE BASED ON FINISHED FACE DIMENSION OF STONE VENEER
 B. WALL ASSEMBLIES SHOWN DIAGRAMATICALLY TO INCREASE CLARITY
 C. PROVIDE STONE VENEER TIES SPACED PER MFGR.

