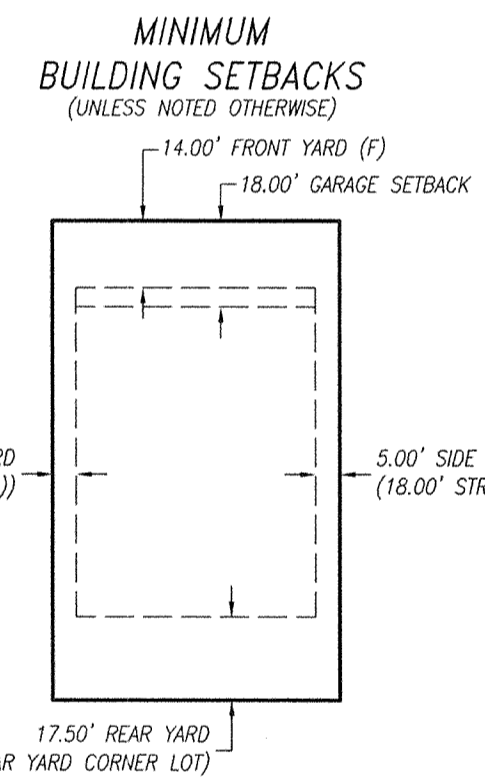
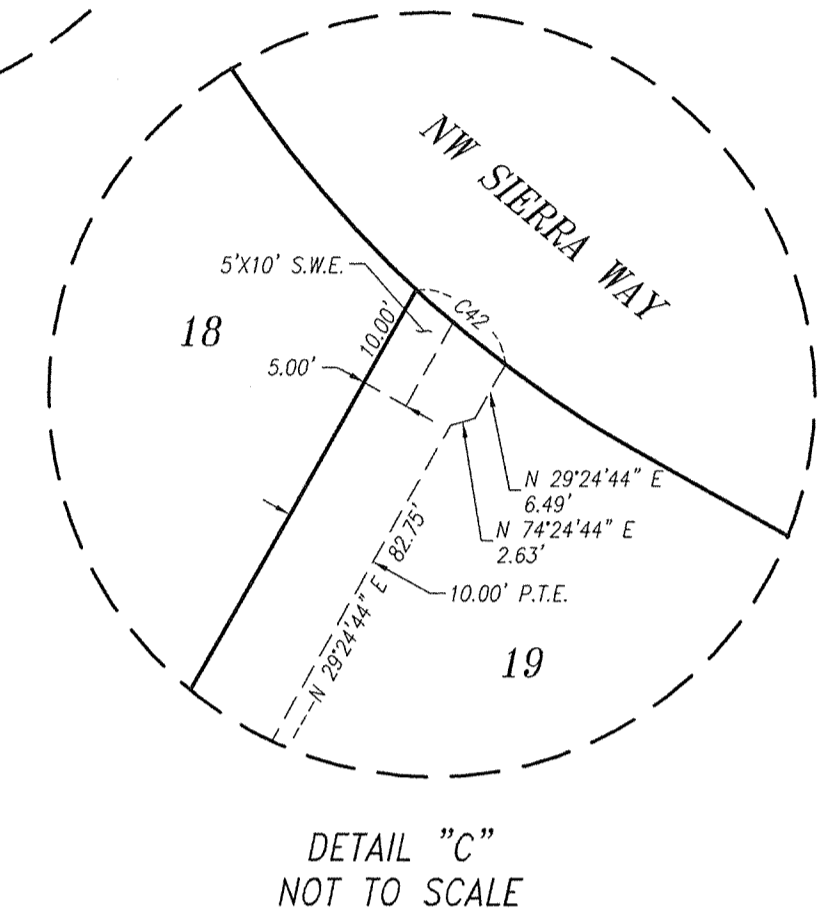
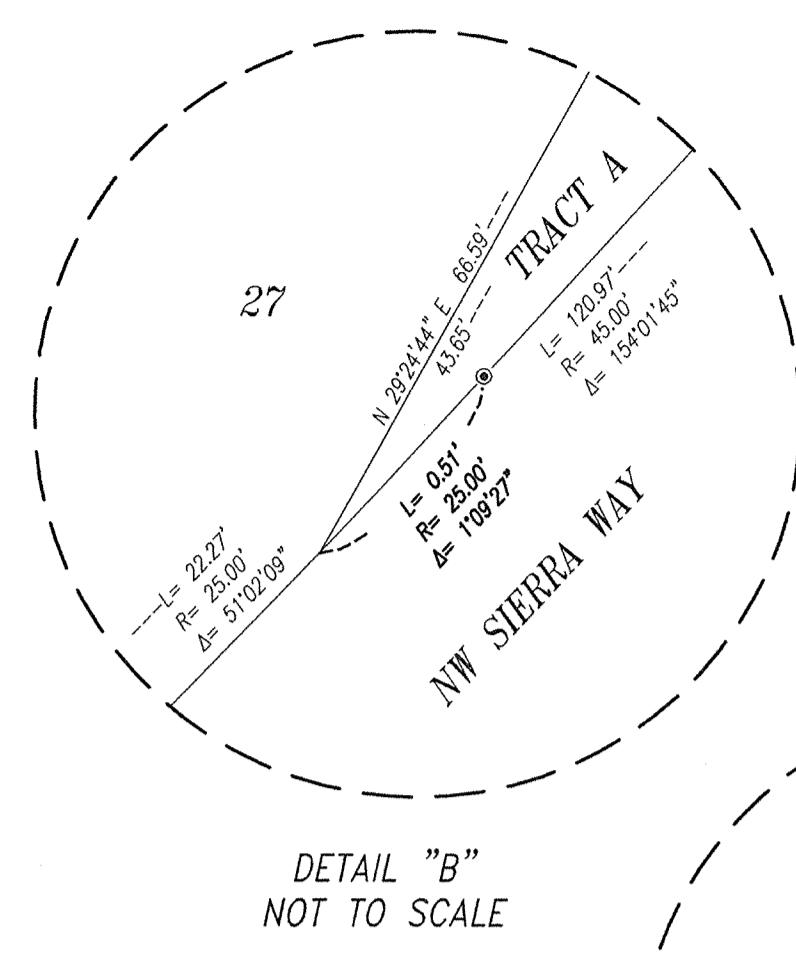
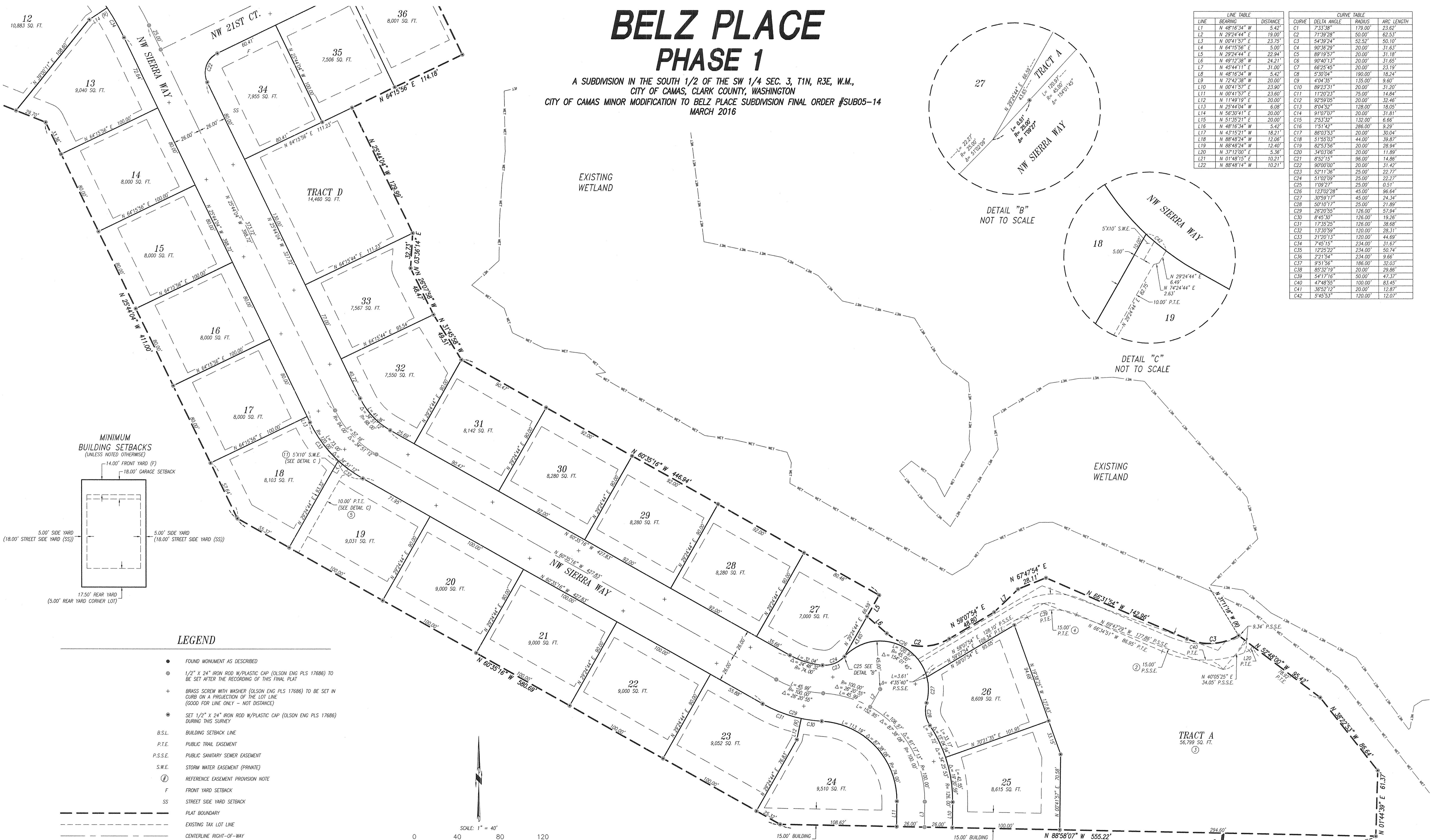


BELZ PLACE PHASE 1

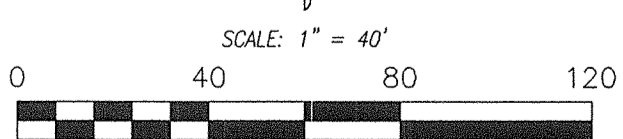
A SUBDIVISION IN THE SOUTH 1/2 OF THE SW 1/4 SEC. 3, T1N, R3E, W.M.,
CITY OF CAMAS, CLARK COUNTY, WASHINGTON
CITY OF CAMAS MINOR MODIFICATION TO BELZ PLACE SUBDIVISION FINAL ORDER #SUB05-14
MARCH 2016

LINE TABLE			CURVE TABLE			
LINE	BEARING	DISTANCE	CURVE	DELTA ANGLE	RADIUS	ARC LENGTH
L1	N 48°16'34" W	5.42'	C1	7°33'38"	179.00'	23.62'
L2	N 29°24'44" E	19.00'	C2	71°39'28"	50.00'	62.53'
L3	N 00°41'57" E	23.75'	C3	54°39'24"	52.52'	50.10'
L4	N 64°15'56" E	5.00'	C4	90°38'29"	20.00'	31.63'
L5	N 29°24'44" E	22.94'	C5	89°19'57"	20.00'	31.18'
L6	N 49°12'38" W	24.21'	C6	90°40'13"	20.00'	31.65'
L7	N 45°44'11" E	31.00'	C7	66°25'45"	20.00'	23.19'
L8	N 48°16'34" W	5.42'	C8	5°30'04"	190.00'	18.24'
L9	N 72°42'38" W	20.00'	C9	4°04'35"	135.00'	9.60'
L10	N 00°41'57" E	23.90'	C10	89°23'51"	20.00'	31.20'
L11	N 00°41'57" E	23.60'	C11	11°20'23"	75.00'	14.64'
L12	N 11°49'19" E	20.00'	C12	92°59'05"	20.00'	32.46'
L13	N 25°44'04" W	6.08'	C13	8°04'52"	128.00'	18.05'
L14	N 56°30'41" E	20.00'	C14	91°07'07"	20.00'	31.81'
L15	N 51°25'21" E	20.00'	C15	2°53'52"	132.00'	6.66'
L16	N 48°16'34" W	5.42'	C16	1°51'42"	286.00'	9.29'
L17	N 43°15'21" W	18.21'	C17	86°03'53"	20.00'	30.04'
L18	N 88°48'24" W	12.06'	C18	51°55'03"	44.00'	39.87'
L19	N 88°48'24" W	12.40'	C19	82°53'56"	20.00'	28.94'
L20	N 37°12'00" E	3.36'	C20	3°03'06"	20.00'	11.89'
L21	N 01°48'15" E	10.21'	C21	8°52'15"	96.00'	14.86'
L22	N 88°48'14" W	10.21'	C22	90°00'00"	20.00'	31.42'
			C23	52°11'36"	25.00'	22.77'
			C24	51°02'09"	25.00'	22.27'
			C25	1°09'27"	25.00'	0.51'
			C26	123°02'28"	45.00'	96.64'
			C27	30°59'17"	45.00'	24.34'
			C28	50°10'17"	25.00'	21.89'
			C29	26°20'55"	126.00'	57.94'
			C30	6°45'30"	126.00'	19.26'
			C31	17°35'25"	126.00'	38.68'
			C32	13°30'59"	120.00'	28.31'
			C33	21°20'13"	120.00'	44.69'
			C34	7°45'15"	234.00'	31.67'
			C35	122°32'22"	234.00'	50.74'
			C36	22°15'41"	234.00'	9.66'
			C37	9°51'56"	186.00'	32.03'
			C38	85°32'19"	20.00'	29.86'
			C39	54°17'16"	50.00'	47.37'
			C40	4°48'55"	100.00'	83.45'
			C41	36°52'12"	20.00'	12.87'
			C42	5°45'53"	120.00'	12.07'



LEGEND

- FOUND MONUMENT AS DESCRIBED
- ⊙ 1/2" X 24" IRON ROD W/PLASTIC CAP (OLSON ENG PLS 17686) TO BE SET AFTER THE RECORDING OF THIS FINAL PLAT
- ⊕ BRASS SCREW WITH WASHER (OLSON ENG PLS 17686) TO BE SET IN CURB ON A PROJECTION OF THE LOT LINE (GOOD FOR LINE ONLY - NOT DISTANCE)
- ⊙ SET 1/2" X 24" IRON ROD W/PLASTIC CAP (OLSON ENG PLS 17686) DURING THIS SURVEY
- B.S.L. BUILDING SETBACK LINE
- P.T.E. PUBLIC TRAIL EASEMENT
- P.S.S.E. PUBLIC SANITARY SEWER EASEMENT
- S.W.E. STORM WATER EASEMENT (PRIVATE)
- Ⓜ REFERENCE EASEMENT PROVISION NOTE
- F FRONT YARD SETBACK
- SS STREET SIDE YARD SETBACK
- PLAT BOUNDARY
- EXISTING TAX LOT LINE
- CENTERLINE RIGHT-OF-WAY
- LOT LINE AND RIGHT-OF-WAY MARGIN
- EXISTING RIGHT-OF-WAY MARGIN
- EASEMENT (AS NOTED)
- BUILDING SETBACK LINE
- WETLAND



BASIS OF BEARINGS

RECORD OF SURVEY BY OLSON ENGINEERING, INC. (40-173)
WASHINGTON STATE PLANE COORDINATE SYSTEM, SOUTH ZONE FROM
CLARK COUNTY GPS CONTROL NETWORK POINTS #0055 AND #0076.

