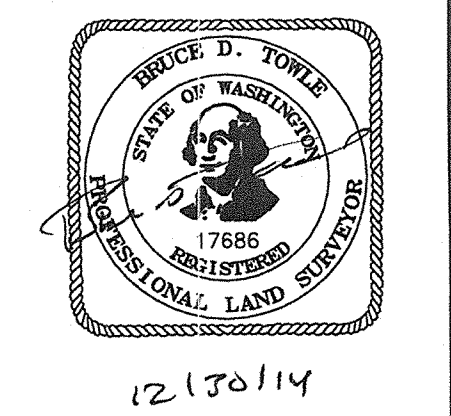


CLIENT:
METROPOLITAN LAND GROUP, LLC
17933 NW EVERGREEN PARKWAY,
SUITE 300
BEAVERTON, OR 97006

EXISTING CONDITIONS SURVEY FOR:
GREEN MOUNTAIN MIXED USE PRD
SECTIONS 17, 20 & 21 T. 2 N., R. 3 E., W.M., CITY OF CAMAS, WA

OLSON LAND SURVEYORS
ENGINEERS
ENGINEERING INC. 222 E. EVERGREEN BLVD., VANCOUVER, WA 98660
REG. NO. 108
REG. NO. 996



CHANGES / REVISIONS	
DESCRIPTION	DATE

DESIGNED:
DRAWN: B.D.T.
CHECKED: J.M.B.
DATE: DECEMBER 2014
SCALE: 1" = 60'

COPYRIGHT 2014, OLSON ENGINEERING, INC.
GREEN MOUNTAIN PRD
JOB NO. 8938.01.02

