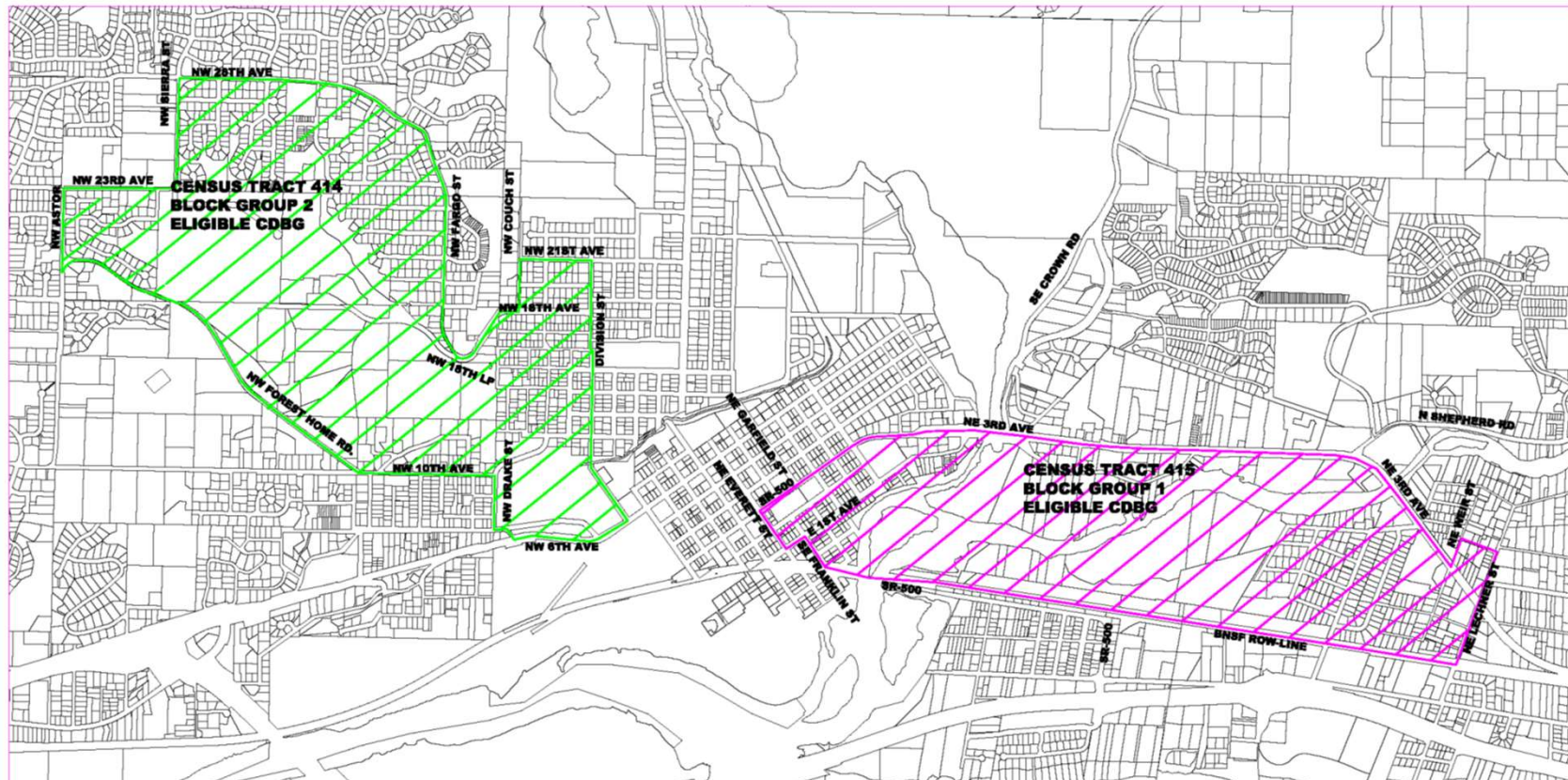


2020 COMMUNITY DEVELOPMENT BLOCK GRANT (CDBG) APPLICATION



ELIGIBLE CDBG NEIGHBORHOODS-CAMAS 2019



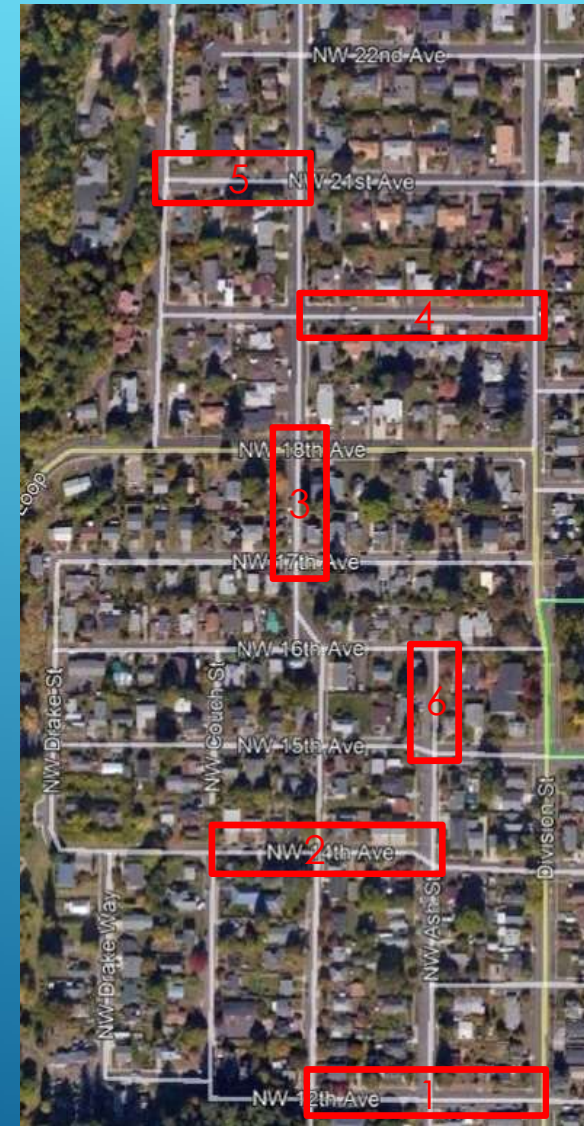
CENSUS TRACT 414 BLOCK GROUP 2 2019 INFO:
 GEO ID: 530110414002
 TRACT & BLOCK GROUP: 414002
 POPULATION OFM: 2476.810033
 HOUSING UNITS FROM GIS: 953
 TOTAL POPULATION: 2306
 MEDIAN AGE: 38.6 (FEMALE=40.6, MALE= 36.2)
 POPULATION AGE 65+: 312
 POPULATION AGE 65+ AS % = 13.53



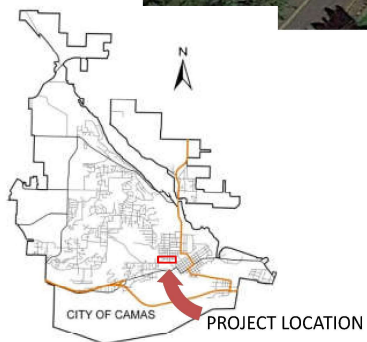
CENSUS TRACT 415 BLOCK GROUP 1 2019 INFO:
 GEO ID: 530110415001
 TRACT & BLOCK GROUP: 415001
 POPULATION OFM: 1008.379998
 HOUSING UNITS FROM GIS: 434
 TOTAL POPULATION: 1037
 MEDIAN AGE: 36.7 (FEMALE=38.3, MALE= 34.6)
 POPULATION AGE 65+: 165
 POPULATION AGE 65+ AS % = 15.91






PROJECT AREAS EVALUATED

OPTION	STREET	PROJECT LIMITS	CDBG FUNDING	CITY FUNDING	TOTAL COST
1	NW 12 TH AVE	NW BENTON TO DIVISION	\$255,000	\$160,000	\$415,000
2	NW 14 TH AVE	NW COUCH TO NW ASH	\$160,000	\$165,000	\$325,000
3	NW BENTON ST	NW 17 TH TO NW 18 TH	\$100,000	\$80,000	\$180,000
4	NW 19 TH AVE	NW BENTON TO DIVISION	\$180,000	\$155,000	\$335,000
5	NW 21 ST AVE	NW COUCH TO NW BENTON	\$120,000	\$100,000	\$220,000
6	NW ASH ST	NW 15 TH TO NW 16 TH	\$180,000	\$30,000	\$210,000



2020 CDBG PROPOSED PROJECT AREA



	NEIGHBORHOOD BOUNDARY		WATER LINE REHABILITATION
	PROJECT WORK BOUNDARY		SIDEWALK / ADA IMPROVEMENTS
			STREET SURFACING IMPROVEMENT



171006 – CDBG ADAMS ST



NW 12TH AVE AT DIVISION STREET, LOOKING SOUTH



NW 12TH AVE, LOOKING EAST FROM NW BENTON STREET



NW 12TH AVE, LOOKING WEST FROM NW ASH STREET



NW 12TH AVE, LOOKING EAST FROM NW ASH STREET