

# GREEN MOUNTAIN

## A MIXED USE PLANNED RESIDENTIAL DEVELOPMENT

EXHIBIT 7  
CAMAS, WASHINGTON  
GREEN MOUNTAIN LAND, LLC.



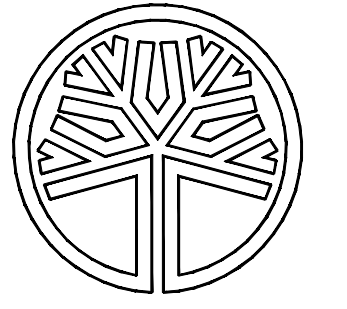
Land Planning  
Landscape  
Architecture

P.O. BOX 2392  
LAKE OSWEGO, OR  
97035  
503-294-0222

SCALE: AS NOTED

DESIGNED BY: WPH  
DRAWN BY: SH  
CHECKED BY: WPH

DATE: 12/30/14  
REVISED:

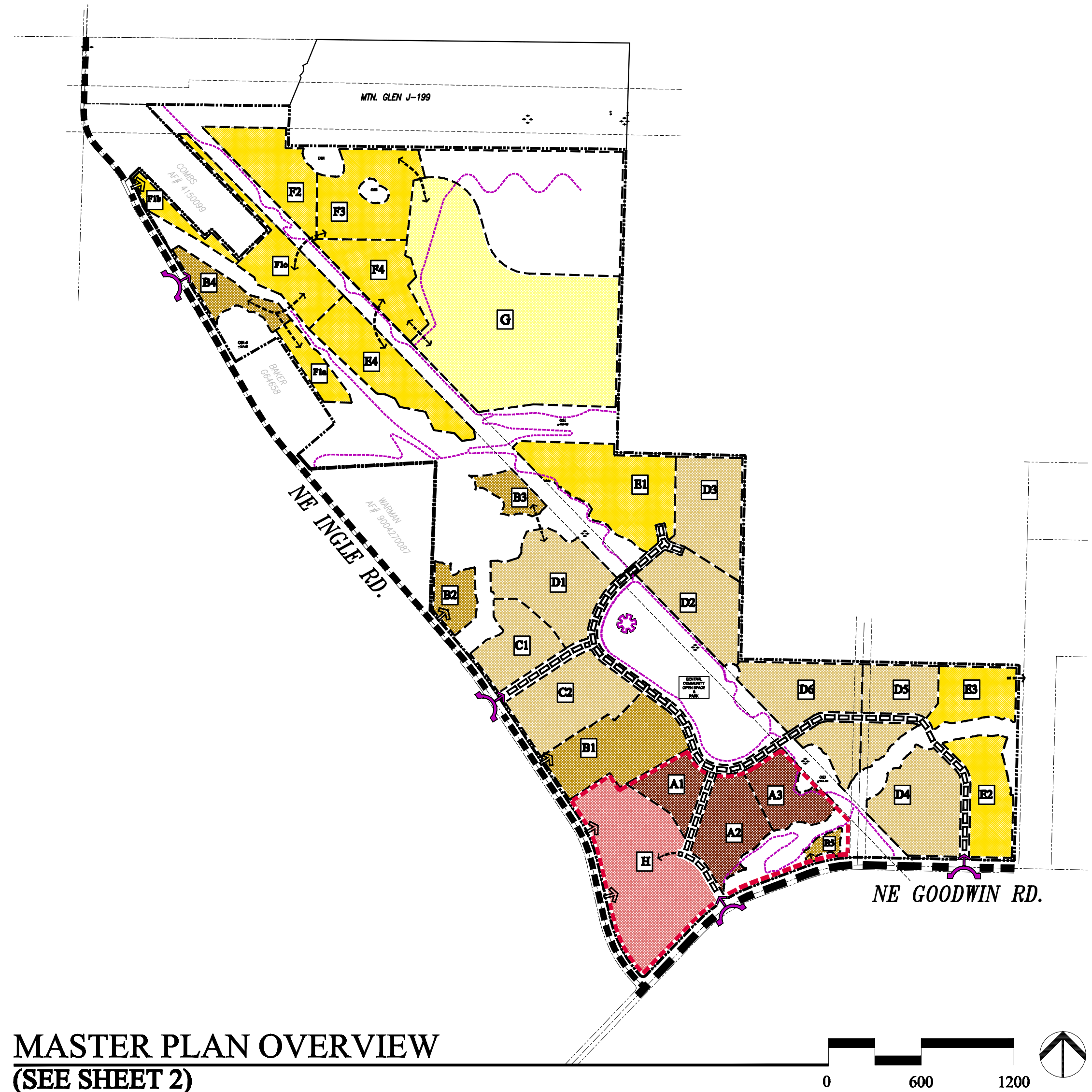


STATE OF WASHINGTON  
REGISTERED  
LANDSCAPE ARCHITECT

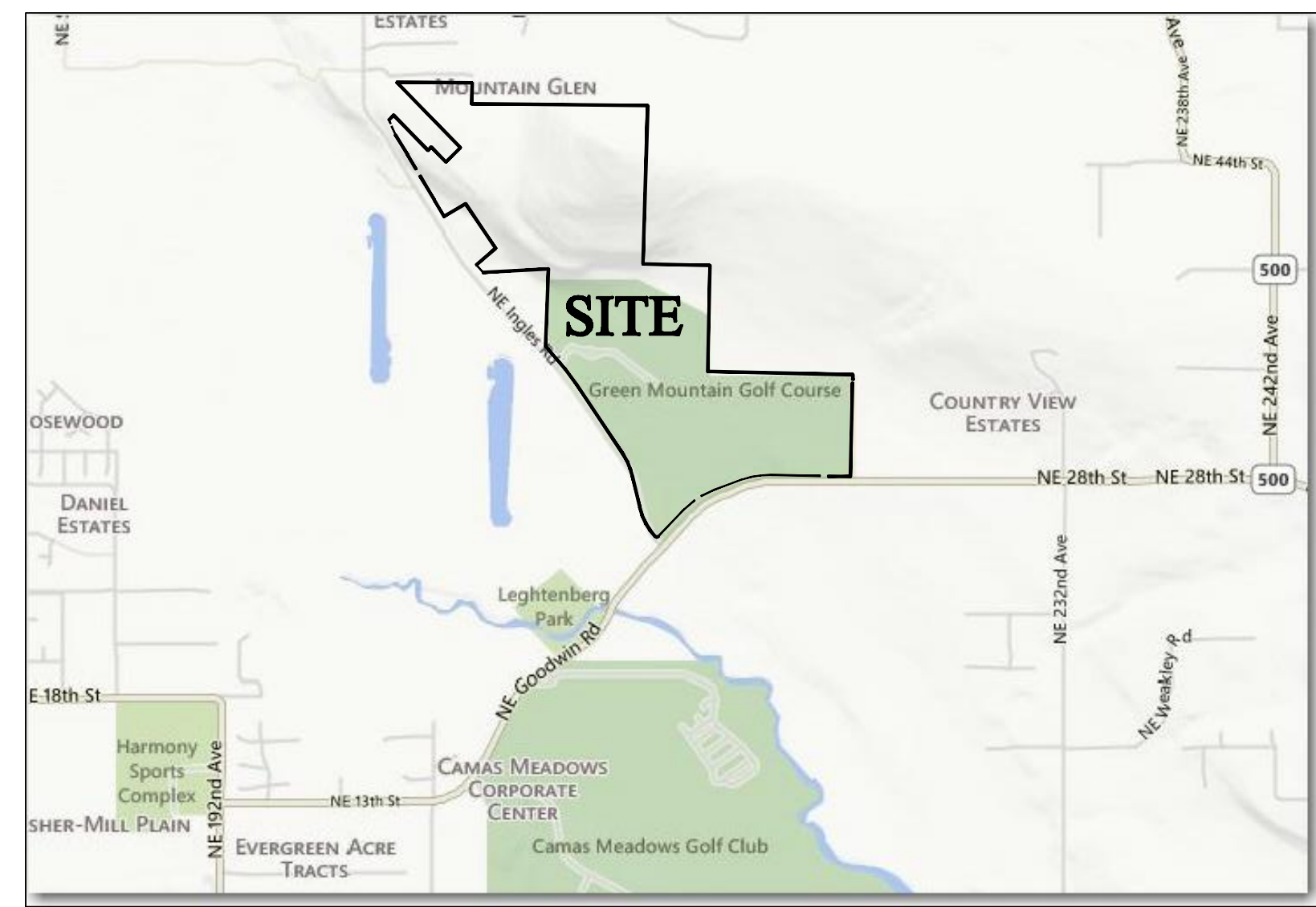
WILLIAM F. HORNING  
CERTIFICATE NO. 382

GREEN MOUNTAIN  
COVER SHEET  
GREEN MOUNTAIN LAND, LLC.  
CAMAS, WASHINGTON

1  
of  
25



MASTER PLAN OVERVIEW  
(SEE SHEET 2)



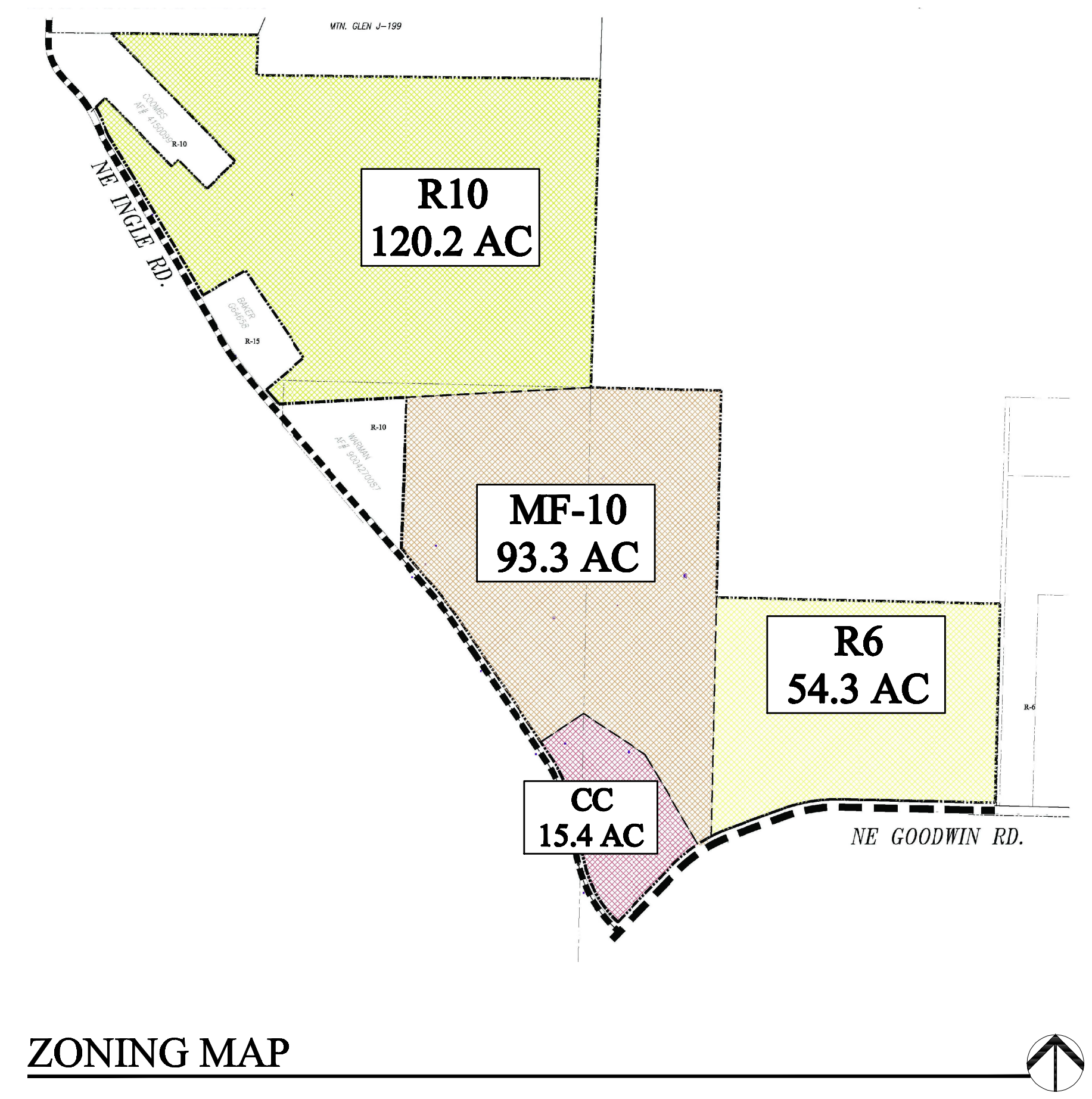
VICINITY MAP

### PROJECT TEAM

- |  |   |
|--|---|
| <p><b>Property Owner:</b><br/>Green Mountain Land LLC.<br/>5300 Meadows Road<br/>Suite #400<br/>Lake Oswego, OR 97035</p> <p><b>Project Managers:</b><br/>John O'Neil<br/>John Schmidt<br/>Metropolitan Land Group, LLC.<br/>17933 NW Evergreen Parkway, Suite 300<br/>Beaverton, OR 97006<br/>(503) 597-7100 FAX: (503) 597-7149<br/>email: john@metlandgroup.com</p> <p><b>Land Use Attorney:</b><br/>Landerholm<br/>Contact: Randy Printz<br/>805 Broadway, Suite 1000<br/>P.O. Box 1086<br/>Vancouver, WA 98666<br/>(360) 816-2530 FAX: (360) 696-2122<br/>email: randy.printz@landerholm.com</p> <p><b>Land Planning / Landscape Architecture:</b><br/>Western Planning Associates, Inc.<br/>Contact: William F. Horning<br/>PO Box 2392<br/>Lake Oswego, OR 97035<br/>(503) 294-0222<br/>email: bill@westernplanning.com</p> <p><b>Civil Engineering &amp; Surveying:</b><br/>Olson Engineering, Inc.<br/>Contact: Kurt Stoner, P.E.<br/>1111 Broadway<br/>Vancouver, WA 98660<br/>(360) 695-1385 FAX: (360) 695-8117<br/>kurt@olsonengr.com</p> | <p><b>Geotechnical Engineer:</b><br/>GeoPacific Engineering, Inc.<br/>Contact: Beth K. Rapp, RG<br/>14835 SW 72nd Ave<br/>Portland, OR 97224<br/>(503) 598-8445 FAX: (503) 941-9281<br/>brapp@geopacificeng.com</p> <p><b>Wetland Biologist &amp; Natural Resources:</b><br/>Ecological Land Services<br/>Contact: Andrea Aberle<br/>1157 3rd Ave, Suite 2200<br/>Langview, WA 98632<br/>(360) 578-1371 FAX: (360) 414-9305<br/>email: andrea@eco-land.com</p> <p><b>Traffic Engineer:</b><br/>Kittelson &amp; Associates, Inc.<br/>Contact: Chris Brehmer<br/>610 SW Alder Street, Suite 700<br/>Portland, OR 97205<br/>(503) 228-5230<br/>email: cbrehmer@kittelson.com</p> <p><b>Archaeologist:</b><br/>Archaeological Services, LLC<br/>Contact: Alexander Gall<br/>2464 Stapleton Road #3<br/>Vancouver, WA 98661<br/>(360) 260-8614 FAX: (360) 260-0129</p> |
|--|---|

### SHEET INDEX

SHEET 1 WPA	COVER SHEET- PROJECT TEAM, SHEET INDEX, VICINITY MAP, EXISTING ZONING & MASTER PLAN
SHEET 2 WPA	MASTER PLAN, SITE INFORMATION, MASTER PLAN COMPONENTS & DENSITY TABLE
SHEET 3 WPA	DEVELOPMENT STANDARDS, LOT STANDARDS & PHASING WPA
SHEET 4-6 WPA	LANDSCAPE MASTER PLANS & PHASE 1 DETAILS
SHEET 7-14 OLSON	PRD EXISTING CONDITIONS SURVEY
SHEET 15-16 OLSON	PHASE 1 EXISTING CONDITIONS SURVEY
SHEET 17 OLSON	OFF SITE UTILITIES
SHEET 18-19 OLSON	PRELIMINARY UTILITY PLANS
SHEET 20 OLSON	STORM FACILITY PLAN AND SECTIONS
SHEET 21-22 OLSON	PRELIMINARY GRADING PLANS
SHEET 23 OLSON	PHASE 1 PRELIMINARY PLAT
SHEET 24 OLSON	PHASE 1 PRELIMINARY PHASING PLAN
SHEET 25 OLSON	STREET SECTIONS



ZONING MAP