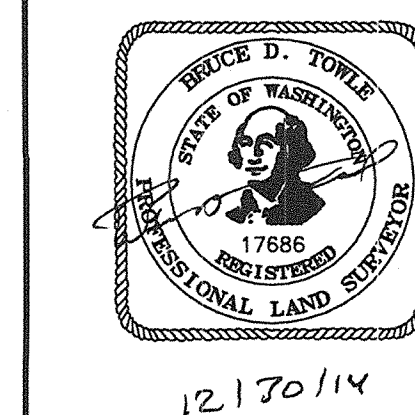


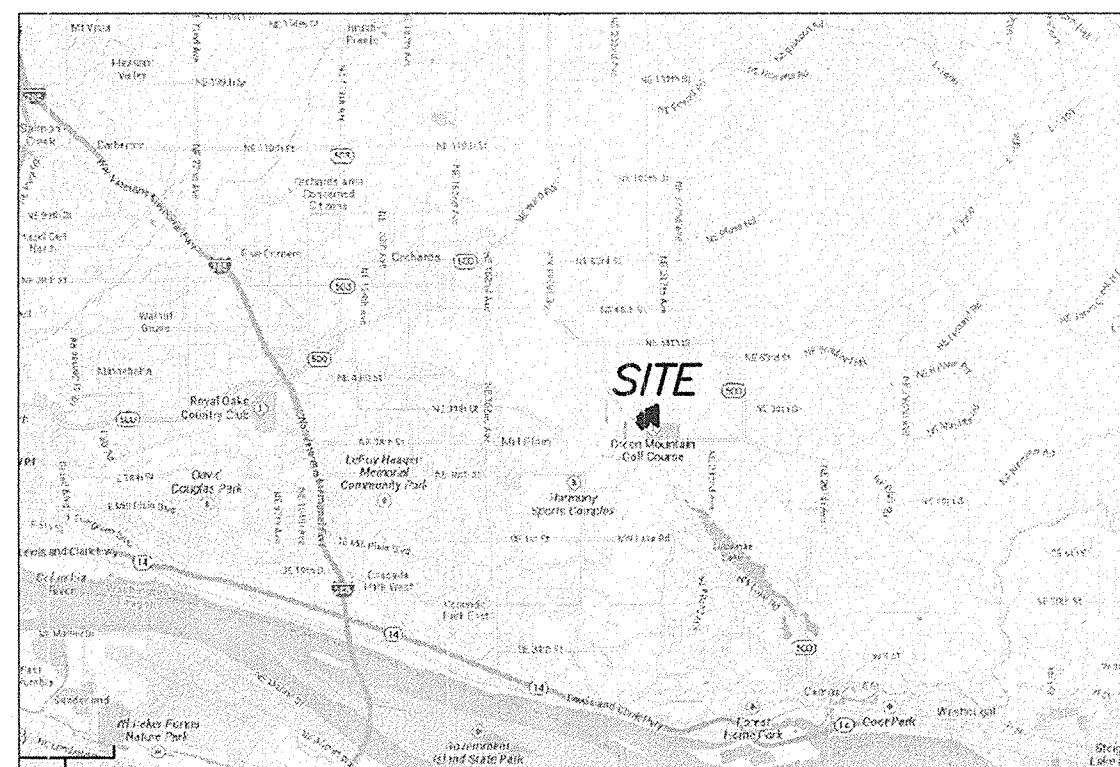
CLIENT:
METROPOLITAN LAND GROUP, LLC
17333 NW EVERGREEN PARKWAY,
SUITE 300
BEAVERTON, OR 97006

EXISTING CONDITIONS SURVEY FOR:
GREEN MOUNTAIN MIXED USE PRD-PHASE 1
SECTIONS 20 & 21 T. 2 N., R 3 E., W.M., CITY OF CAMAS, WA
OLSON LAND SURVEYORS
ENGINEERS
ENGINEERING INC. 222 E. EVERGREEN BLVD., VANCOUVER, WA 98660
360-696-1359
509-589-9039



CHANGES / REVISIONS

DESCRIPTION	DATE
DESIGNED:	
DRAWN: B.D.T.	
CHECKED: J.M.B.	
DATE: DECEMBER 2014	
SCALE: 1" = 60'	
COPYRIGHT 2014, OLSON ENGINEERING, INC.	
GREEN MOUNTAIN PRD	
JOB NO. 8938.01.02	



VICINITY MAP
NO SCALE

BASIS OF BEARINGS:
BEARINGS ARE BASED ON THE WASHINGTON STATE COORDINATE SYSTEM (SOUTH ZONE - 4602) BASED ON TRAVERSES BY OLSON ENGINEERING, INC. PERFORMED DURING PREVIOUS SURVEY RECORDED IN BK. 51, PG. 197. DISTANCES SHOWN HEREON ARE GROUND AND HAVE BEEN SCALED BY A COMBINED GRID TO GROUND SCALE FACTOR OF 0.999982076.

VERTICAL DATUM:
ELEVATIONS SHOWN HEREON ARE NAVD83 (47) A.K.A. CLARK COUNTY VERTICAL DATUM BASED ON TIES TO CLARK COUNTY BENCHMARKS:

LACAMAS-9, A CONCRETE MONUMENT WITH BRASS DISK, 25' NE OF CL OF BPA LINES OPPOSITE DRIVEWAY TO HOUSE #21917, 28' NORTH OF CL NE 28TH STREET. ELEVATION=255.58

LACAMAS-8, A BRASS DISK IN SE CORNER OF WINGWALL OVER LACAMAS CREEK. ELEVATION=191.33

BENCHMARK:

SITE BENCHMARK NO. 1:
LACAMAS-9, A CONCRETE MONUMENT WITH BRASS DISK, 25' NE OF CL OF BPA LINES OPPOSITE DRIVEWAY TO HOUSE #21917, 28' NORTH OF CL NE 28TH STREET. ELEVATION=255.58

SITE BENCHMARK NO. 2:
LACAMAS-8, A BRASS DISK IN SE CORNER OF WINGWALL OVER LACAMAS CREEK. ELEVATION=191.33

NOTES:
THE PROPOSED PHASE 1 BOUNDARY CONTAINS 51.2 ACRES.

THE LOCATION OF EXISTING UTILITY FACILITIES HAS NOT BEEN RESEARCHED. UNDERGROUND UTILITIES SHOWN HEREON ARE FROM TIES TO UTILITY PAINT MARKS MADE IN RESPONSE TO "ONE-CALL CONCEPTS" UTILITY NOTIFICATION TICKET NO. 14053996, 14054029 AND 14054032. THE SURVEYOR ASSUMES NO RESPONSIBILITY FOR THE ACCURACY OF THE DELINEATION OF SUCH UNDERGROUND UTILITIES BY THE RESPECTIVE UTILITY OWNERS, NOR THE EXISTENCE OF BURIED OBJECTS WHICH ARE NOT SHOWN ON THIS PLAN.

THIS SURVEY REFLECTS THOSE EASEMENTS SHOWN ON PRELIMINARY TITLE REPORT (ORDER NO. 01209-7827) PROVIDED BY STEWART TITLE INSURANCE COMPANY, DATED: NOVEMBER 27, 2012 AT 8:00 AM.

FIELD WORK ALONG NE 28TH STREET AND WETLAND TIES WERE PERFORMED BY OLSON ENGINEERING, INC. IN MARCH, 2014. AT THE REQUEST OF THE CLIENT, PREVIOUS ON-SITE TOPOGRAPHIC DATA, PERFORMED BY OTHERS, WAS PROVIDED AND COMBINED WITH OLSON ENGINEERING DATA. ON-SITE TOPOGRAPHY HAS NOT BEEN VERIFIED BY OLSON ENGINEERING, INC.

WETLANDS SHOWN HEREON ARE APPROXIMATE AND WERE DELINEATED BY ECOLOGICAL LAND SERVICES, INC. WETLAND DELINEATION LINE WORK WAS PROVIDED BY ECOLOGICAL LAND SERVICES IN NOVEMBER, 2014 AND HAVE NOT BEEN FIELD VERIFIED BY OLSON ENGINEERING, INC.

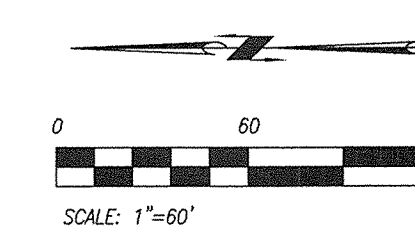
SURVEY MONUMENTS - ALL SURVEY MONUMENTS SHOWN HEREON, INCLUDING BENCHMARKS SHALL BE PROTECTED FROM DISTURBANCE OR DESTRUCTION SUBJECT TO WAC 332-120 (SURVEY MONUMENTS - REMOVAL OR DESTRUCTION). IF THE CONSTRUCTION OF NEW FACILITIES CAUSES THE NEED FOR ANY MONUMENT TO BE REMOVED, THE CONTRACTOR IS ADVISED TO CONTACT THE APPROPRIATE LAND SURVEYOR PRIOR TO CONSTRUCTION FOR PERPETUATION OF THE ORIGINAL POSITION SUBJECT TO WAC 332-120-060.

LEGEND

- FOUND MONUMENT AS NOTED
- ☉ SITE BENCHMARK AS NOTED
- POWER POLE WITH GUY ANCHOR
- SIGN
- ⊕ STORM MANHOLE, ROUND AND SQUARE STORM CATCH BASIN
- ⊕ FIRE HYDRANT, WATER METER AND WATER VALVE
- ⊕ SANITARY MANHOLE
- ⊕ CLEANOUT
- ⊕ POWER METER, UNKNOWN POWER UTIL, POWER J-BOX
- ⊕ TELEPHONE PEDESTAL
- ⊕ UNKNOWN UTILITY
- ⊕ STORM LINE / CULVERT
- STM UNDERGROUND TELEPHONE LINE
- TEL UNDERGROUND TELEPHONE LINE
- OH OVERHEAD POWER LINE
- PMR UNDERGROUND POWER LINE
- W UNDERGROUND WATER LINE
- CHAIN LINK FENCE LINE
- BARBED WIRE FENCE LINE
- () RECORD DISTANCE

LEGEND CONT.

- WET APPROXIMATE WETLAND AREA
- ASPHALT PAVING
- GRAVEL SURFACE
- EXISTING SIGNIFICANT DECIDUOUS TREE
- EXISTING SIGNIFICANT CONIFEROUS TREE
- 20" DBH AND GREATER OAK TREE
- PROPOSED PHASE 1 BOUNDARY



MATCH LINE - SEE SHEET 16 OF 25

