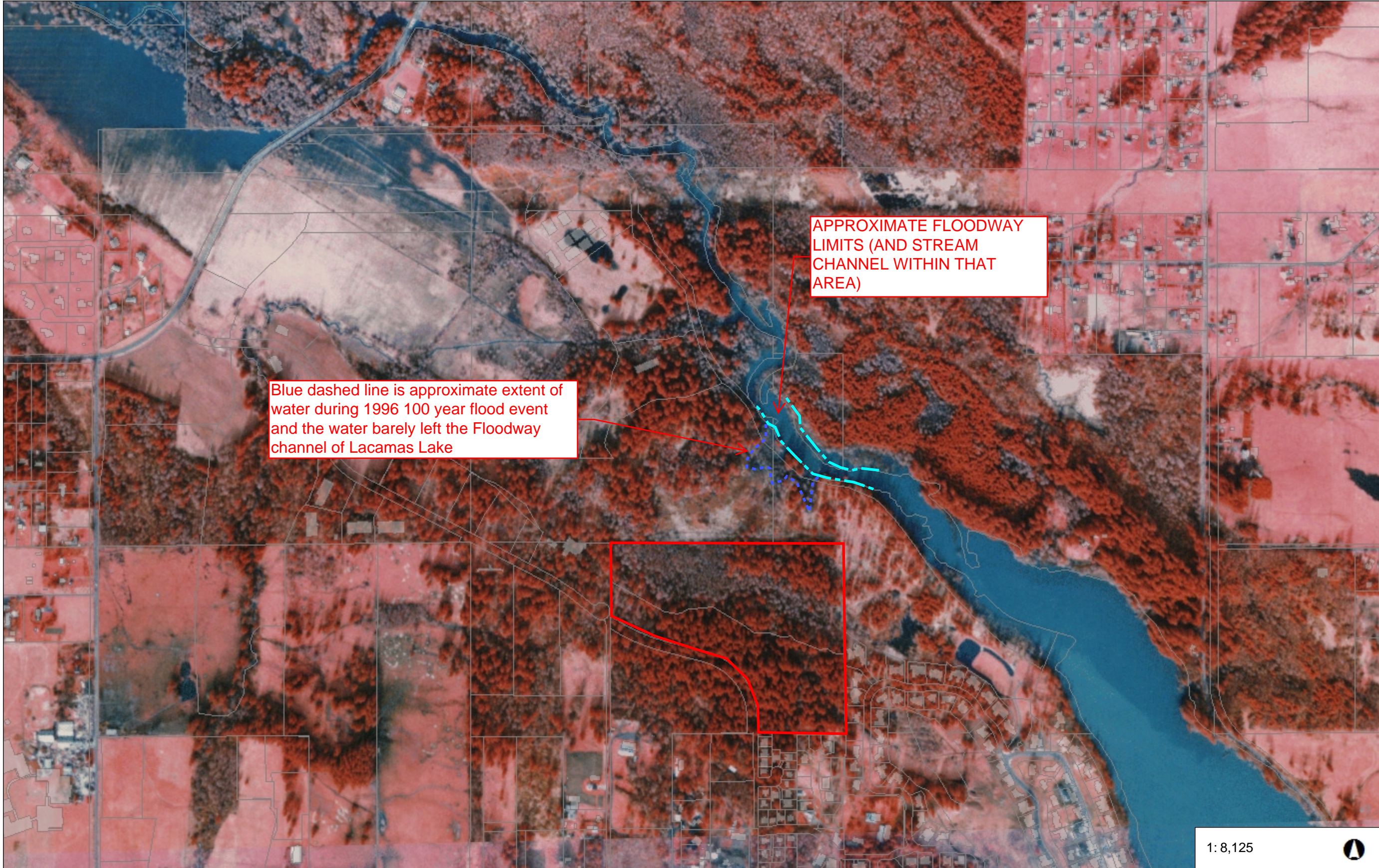




1996 ~100yr flood Infrared Aerial Lacamas Lake



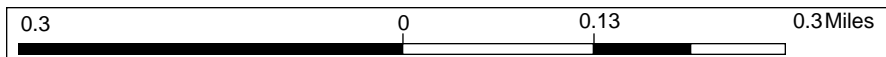
- Legend**
- Building Footprints
 - Taxlots
 - Cities Boundaries
 - Urban Growth Boundaries



APPROXIMATE FLOODWAY LIMITS (AND STREAM CHANNEL WITHIN THAT AREA)

Blue dashed line is approximate extent of water during 1996 100 year flood event and the water barely left the Floodway channel of Lacamas Lake

1: 8,125



Notes:

