

**CAMAS
MUNICIPAL
CODE**

**DRAFT AMENDMENTS TO TITLE 16
ENVIRONMENT**



STATE ENVIRONMENTAL POLICY ACT

SEPA

WHERE IS SEPA?

Chapter 16.01 - GENERAL PROVISIONS

Chapter 16.03 - DEFINITIONS

Chapter 16.05 - ADMINISTRATIVE PROVISIONS

Chapter 16.07 - CATEGORICAL EXEMPTION AND THRESHOLD DETERMINATIONS

Chapter 16.09 - ENVIRONMENTAL IMPACT STATEMENTS

Chapter 16.11 - ENVIRONMENTAL DOCUMENTS AND HEARINGS

Chapter 16.13 - **SEPA** AND AGENCY DECISIONS AND APPEALS

Chapter 16.15 - CATEGORICAL EXEMPTIONS

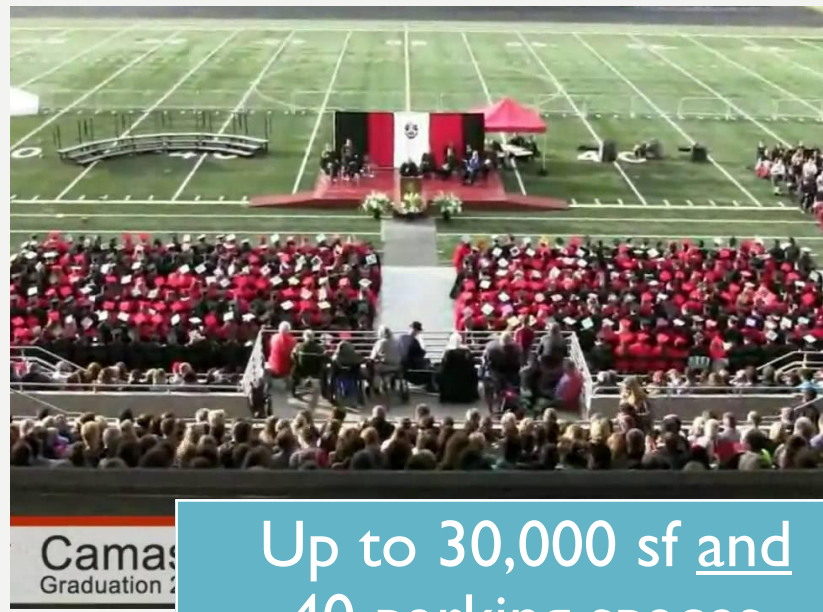
Chapter 16.17 - AGENCY COMPLIANCE

Chapter 16.19 - FEES

Chapter 16.21 - FORMS



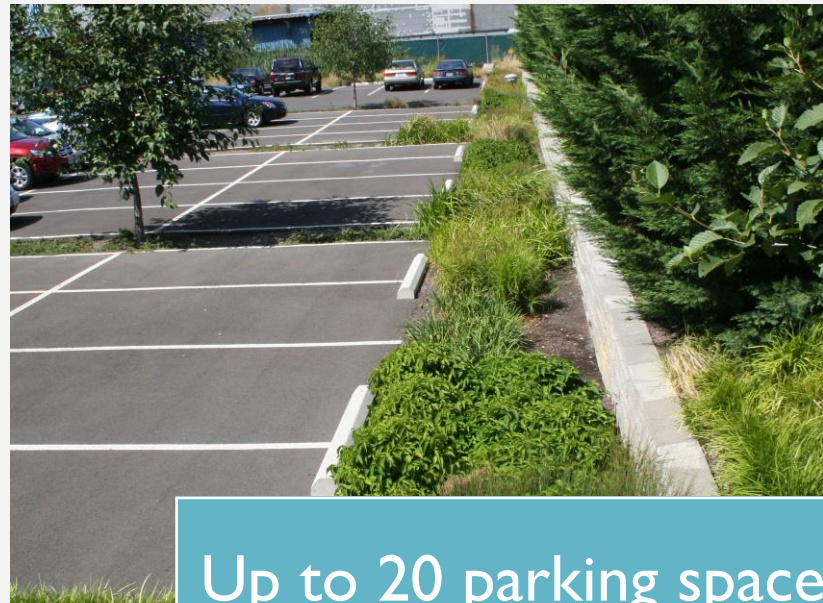
Up to 9 Single family units



Up to 30,000 sf and 40 parking spaces



Up to 500 cu. yds.



Up to 20 parking spaces

EXEMPTION LEVELS



ARCHAEOLOGICAL

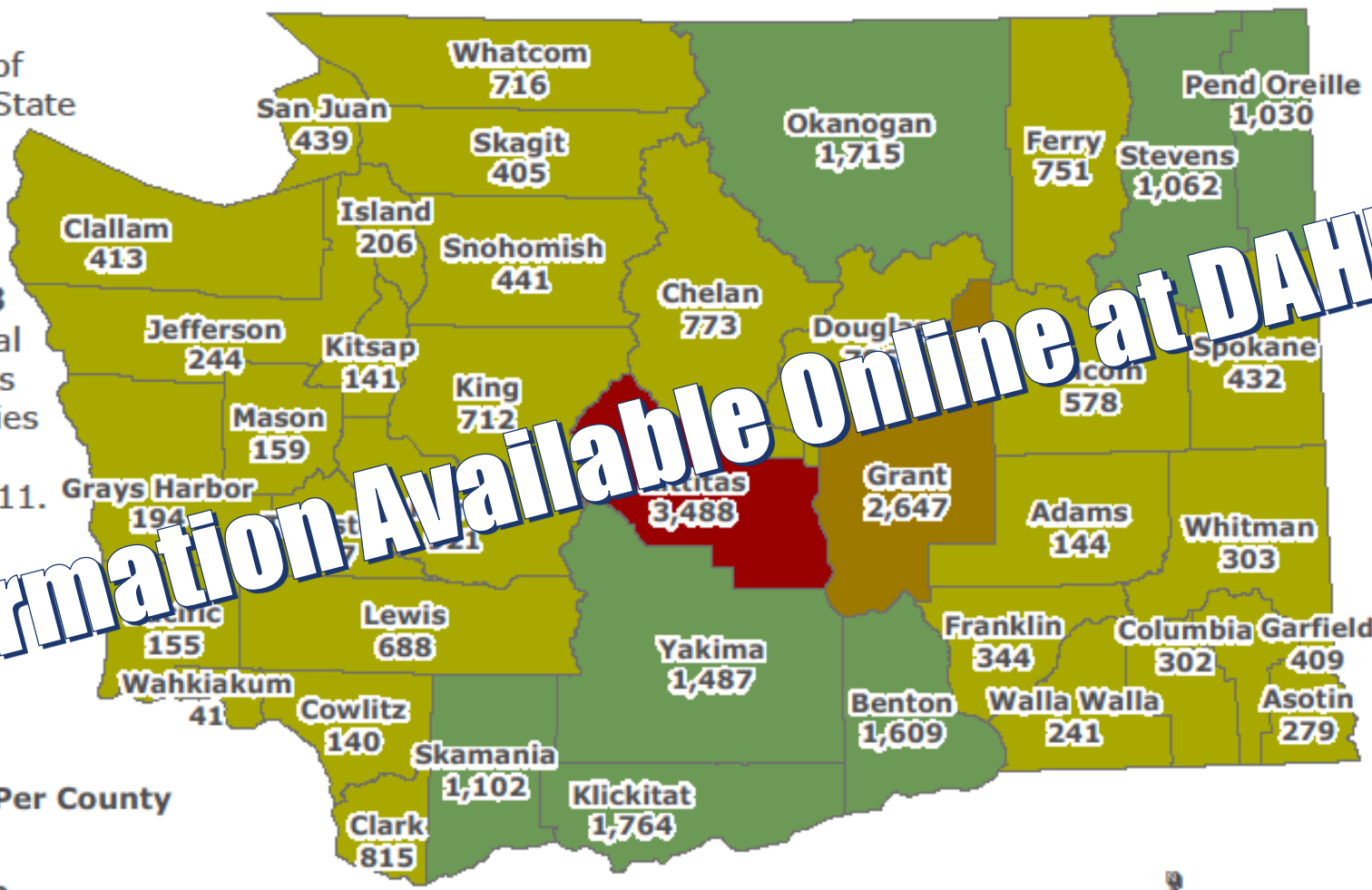
CHAPTER 16.31

Archaeological Sites, Districts & Cemeteries Per County

0.00024% of Washington State has been inventoried.

There have been **28,333** archaeological sites, districts and cemeteries inventoried as of July 2011.

Information Available Online at DAHP




Inventories Per County

- 0
- 1 - 999
- 1,000 - 1,999
- 2,000 - 2,999
- 3,000 - 3,488



1063 South Capitol Way, PO BOX 48343
 Olympia Washington 98504-8343
 Phone 360-586-3081 Fax 360-586-3067
www.dahp.wa.gov
 Map Created July 2011



WHAT IS CHAPTER 16.33?

1. PUBLIC VIEWS?
2. OPEN SPACE?
3. HISTORIC SITES?
4. STRUCTURES?
5. ARCHAEOLOGICAL?
6. TRAFFIC?
7. WATER QUALITY?
8. PUBLIC FACILITIES?



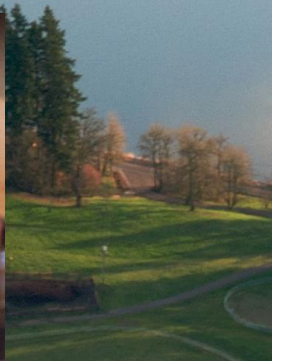
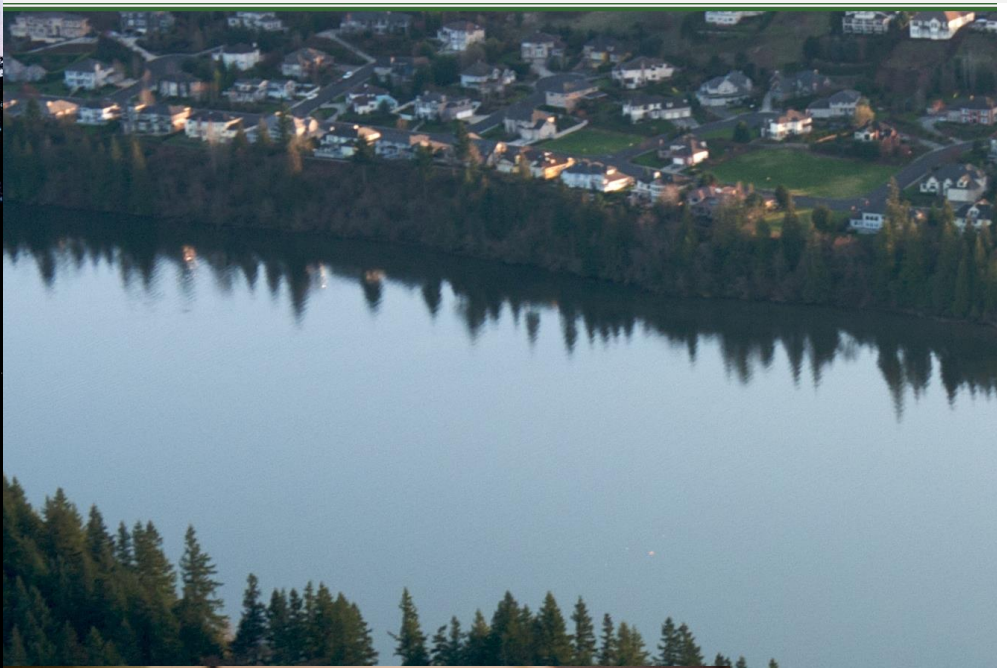
YOU WILL FIND IT IN CAMAS 2035!

➤ Adopted Comprehensive Plan
(June 2016)

➤ Transportation
(Chapter 4)

➤ Public Facilities and Services
(Chapter 5)

PUBLIC VIEWS





CRITICAL AREAS

CHAPTER 16.51

CHAPTER 16.53

CHAPTER 16.61

GENERAL PROVISIONS

WETLANDS

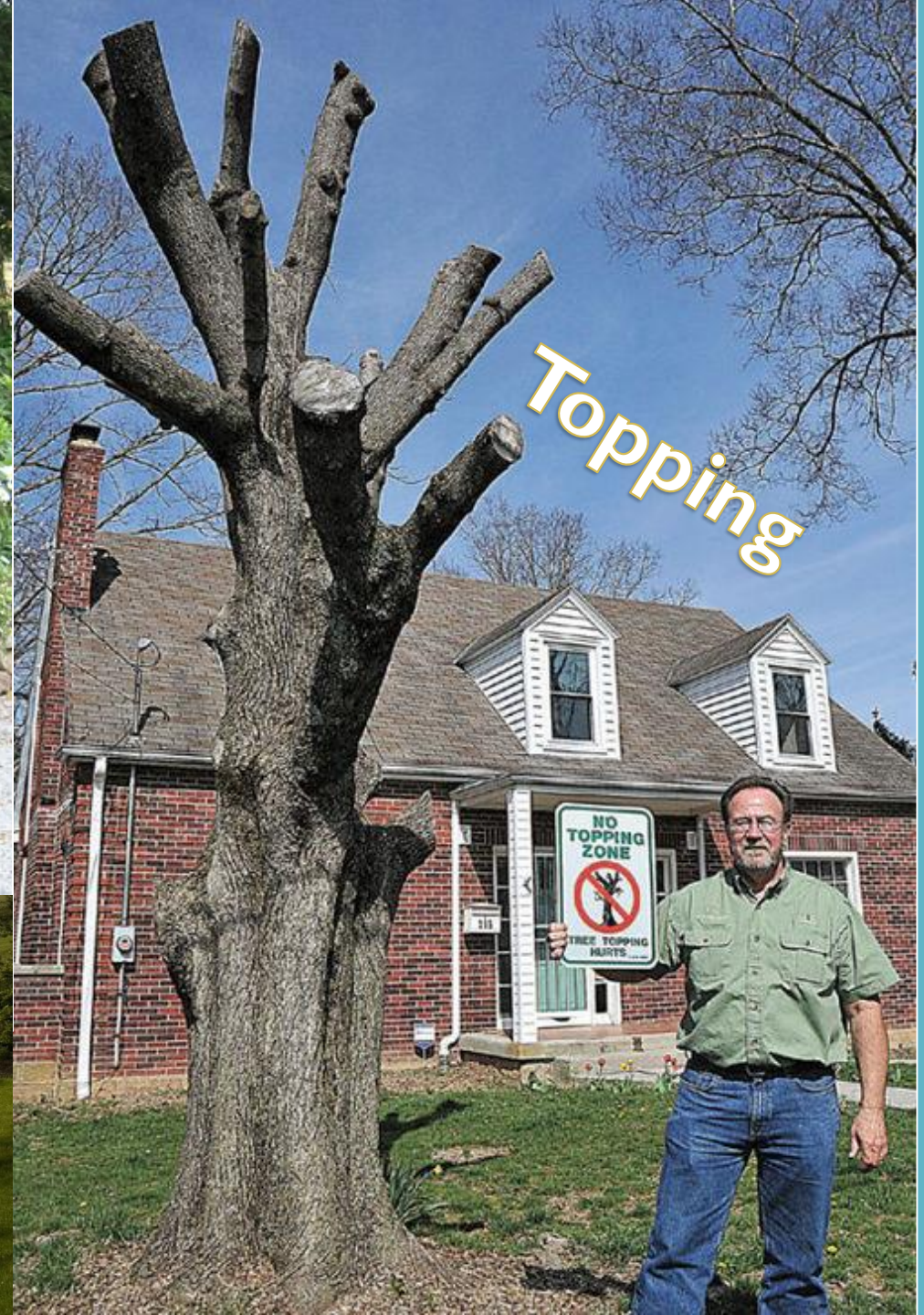
FISH & WILDLIFE

VEGETATION REMOVAL

What is a Vegetation Permit?

- Is there a tree removal permit?
- New Section Number
- Not a new Section and not a new permit.

Steep slopes





Shorelines