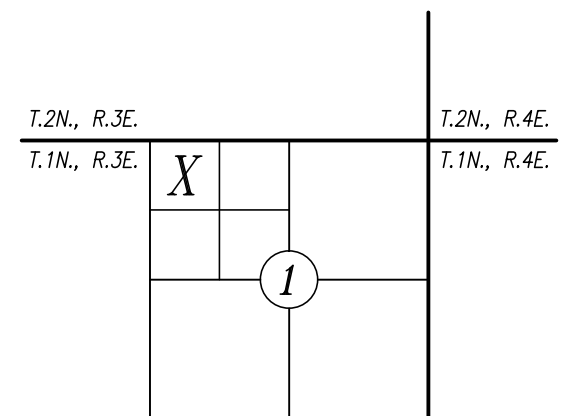


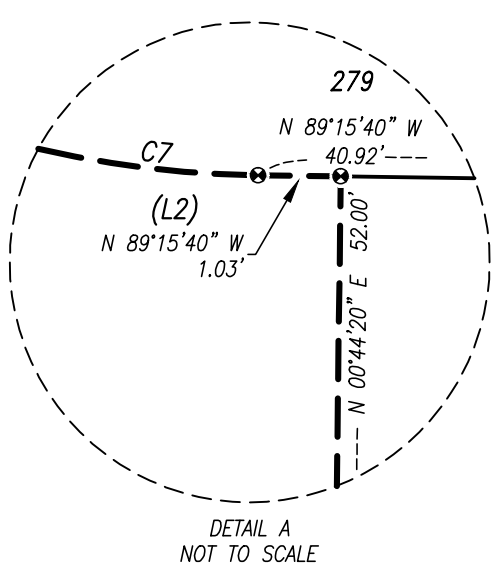
# THE HILLS AT ROUND LAKE PHASES 8 & 11

A SUBDIVISION IN THE NW 1/4, OF THE NW 1/4  
SEC. 1, T 1 N, R 3 E, W.M.,  
CITY OF CAMAS, CLARK COUNTY, WASHINGTON  
CITY OF CAMAS FINAL ORDER SUB#05-16  
(POD "B2" OF THE HILLS AT ROUND LAKE PRD)  
ORIGINALLY APPROVED AS THE HILLS AT ROUND LAKE PHASES 8 AND 11  
OCTOBER 2017

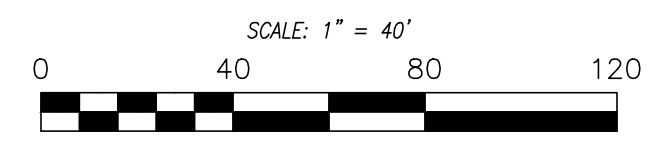


## EASEMENT PROVISIONS

- A PRIVATE STORM WATER EASEMENT OVER, UNDER, AND UPON LOTS 199 THROUGH 202, AS SHOWN HEREON, IS HEREBY RESERVED FOR AND GRANTED TO THE OWNERS OF LOTS 198 THROUGH 201 FOR THE PURPOSE OF A STORM WATER DRAIN SYSTEM. THE OWNERS OF LOTS 198 THROUGH 202 SHALL BE RESPONSIBLE FOR THE MAINTENANCE AND REPAIR OF THE STORM WATER DRAIN SYSTEM THEY HAVE BENEFIT OF USE.
- A PRIVATE STORM WATER EASEMENT OVER, UNDER, AND UPON LOTS 203 AND 204, AS SHOWN HEREON, IS HEREBY RESERVED FOR AND GRANTED TO THE OWNERS OF LOTS 204 AND 205 FOR THE PURPOSE OF A STORM WATER DRAIN SYSTEM. THE OWNERS OF LOTS 203 THROUGH 205 SHALL BE RESPONSIBLE FOR THE MAINTENANCE AND REPAIR OF THE STORM WATER DRAIN SYSTEM THEY HAVE BENEFIT OF USE.
- A PRIVATE STORM WATER EASEMENT OVER, UNDER, AND UPON LOTS 281 THROUGH 284, AS SHOWN HEREON, IS HEREBY RESERVED FOR AND GRANTED TO THE OWNERS OF LOTS 280 THROUGH 283 FOR THE PURPOSE OF A STORM WATER DRAIN SYSTEM. THE OWNERS OF LOTS 280 THROUGH 284 SHALL BE RESPONSIBLE FOR THE MAINTENANCE AND REPAIR OF THE STORM WATER DRAIN SYSTEM THEY HAVE BENEFIT OF USE.
- A PRIVATE STORM WATER EASEMENT OVER, UNDER, AND UPON LOTS 269 THROUGH 272 AND TRACT "Y", AS SHOWN HEREON, IS HEREBY RESERVED FOR AND GRANTED TO THE OWNERS OF LOTS 269 THROUGH 273 FOR THE PURPOSE OF A STORM WATER DRAIN SYSTEM. THE OWNERS OF LOTS 269 THROUGH 273 AND TRACT "Y" SHALL BE RESPONSIBLE FOR THE MAINTENANCE AND REPAIR OF THE STORM WATER DRAIN SYSTEM THEY HAVE BENEFIT OF USE.
- LOTS 287 THROUGH 291 SHALL BENEFIT FROM THE PRIVATE STORM WATER EASEMENT OVER, UNDER, AND UPON LOTS 230 THROUGH 237 AS SHOWN ON THE PLAT OF THE HILLS AT ROUND LAKE PHASE 9 AS GRANTED TO THE HOMEOWNERS' ASSOCIATION, STORM WATER DRAIN SYSTEMS FOR LOTS 287 THROUGH 291 SHALL CONNECT TO THE STORM WATER DRAINAGE IMPROVEMENTS LOCATED WITHIN SAID PHASE 9 PRIVATE STORM WATER EASEMENT. (SEE PAGE 3 OF 3)



MATCH LINE SEE PAGE 3 OF 3



## BASIS OF BEARINGS

N 89°15'40" W ASSUMED ALONG THE NORTH LINE OF SEC. 1, T. 1 N., R. 3 E., W.M. BETWEEN THE MONUMENTS FOUND IN PLACE AT THE NW CORNER AND THE NE CORNER THEREOF

FOUND 1" IRON PIPE W/INSET Y.P.C. STAMPED "TANDY 21581" DURING PREVIOUS SURVEY (BK. 49, PG. 125) SEE L.C.R. BK. 13, PG. 244/248 (NOT VISITED DURING THIS SURVEY)

| LINE | BEARING           | DISTANCE |
|------|-------------------|----------|
| L1   | N 44°44'34" W     | 6.33'    |
| L2   | N 89°15'40" W     | 1.03'    |
| L3   | N 89°15'40" W     | 15.76'   |
| L4   | N 66°55'54" W (R) | 12.00'   |
| L5   | N 15°15'30" E (R) | 12.00'   |
| L6   | N 89°15'40" W     | 1.79'    |

| CURVE | DELTA     | RADIUS  | LENGTH |
|-------|-----------|---------|--------|
| C1    | 67°15'10" | 44.00'  | 51.65' |
| C2    | 43°7'06"  | 624.00' | 50.30' |
| C3    | 98°18'45" | 13.00'  | 22.31' |
| C4    | 89°01'52" | 13.00'  | 20.20' |
| C5    | 41°7'53"  | 624.00' | 46.81' |
| C6    | 90°45'30" | 13.00'  | 20.59' |
| C7    | 89°14'30" | 13.00'  | 20.25' |
| C8    | 90°00'00" | 13.00'  | 20.42' |
| C9    | 90°00'00" | 13.00'  | 20.42' |
| C10   | 97°23'44" | 44.00'  | 74.79' |
| C11   | 30°08'35" | 44.00'  | 23.15' |
| C12   | 30°08'35" | 70.00'  | 36.83' |
| C13   | 30°08'35" | 90.00'  | 50.51' |
| C14   | 89°51'25" | 13.00'  | 20.39' |
| C15   | 90°10'13" | 13.00'  | 20.46' |
| C16   | 3°49'10"  | 124.00' | 8.27'  |
| C17   | 77°26'00" | 13.00'  | 17.57' |
| C18   | 77°26'00" | 13.00'  | 17.57' |
| C19   | 8°46'23"  | 124.00' | 18.99' |
| C20   | 8°30'57"  | 124.00' | 18.43' |
| C21   | 0°15'26"  | 124.00' | 0.56'  |

## LEGEND

- SET 1/2" x 24" REBAR & YELLOW PLASTIC CAP STAMPED "OLSON ENG PLS 46624" DURING THIS SURVEY
- + BRASS SCREW WITH WASHER STAMPED "OLSON ENG PLS 46624" IN CURB ON PROJECTION OF THE LOT LINE 11.50' FROM THE FRONT CORNER UNLESS OTHERWISE NOTED IN THE CURB SCREW TABLE (SEE SHEETS 2 OF 3 AND 3 OF 3) TO BE SET AFTER THE RECORDING OF THIS FINAL PLAT (SYMBOLS SHOWN ARE NOT TO SCALE)
- ⊙ 1/2" x 24" REBAR & YELLOW PLASTIC CAP STAMPED "OLSON ENG PLS 46624" TO BE SET AFTER THE RECORDING OF THIS FINAL PLAT
- PLAT BOUNDARY
- LOT LINE
- SECTION LINE
- CENTER LINE RIGHT-OF-WAY
- EASEMENT
- BUILDING SETBACK
- EXISTING TAX LOT
- CENTERLINE RIGHT-OF-WAY OTHER PLAT PHASES
- △ SEE EASEMENT PROVISION #
- (R) RADIAL
- R/W DED. PUBLIC RIGHT-OF-WAY DEDICATION

| LOT LINE                      | DISTANCE |
|-------------------------------|----------|
| 288/TRACT I, 271/272, 284/285 | 11.90'   |
| 274/275                       | 11.70'   |
| 285/286, 286/287, 287/288     | 4.25'    |



PG. 2 OF 3 JOB# 7436.03.02

**OLSON LAND SURVEYORS**  
ENGINEERS  
ENGINEERING INC. 222 E. EVERGREEN BLVD, YANCOUVER, WA 98660  
1-360-695-1385  
1-509-289-9838

COPYRIGHT 2017, OLSON ENGINEERS, INC.  
FILE: J:\DATA\7000\7400\7436\SURVEY\PLATS\7436S.PLAT PH-8-11\_PG2-3.DWG