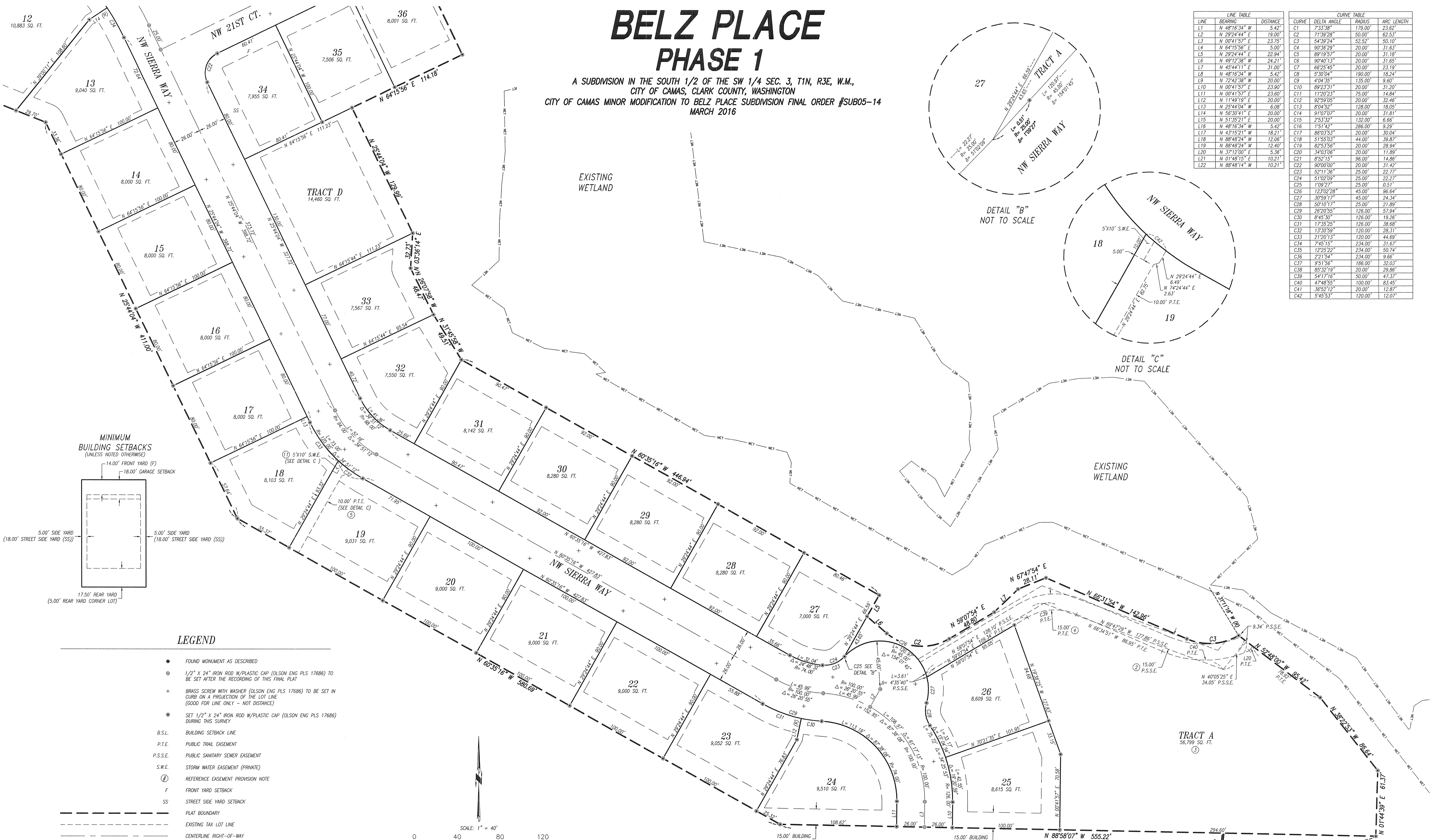


# BELZ PLACE PHASE 1

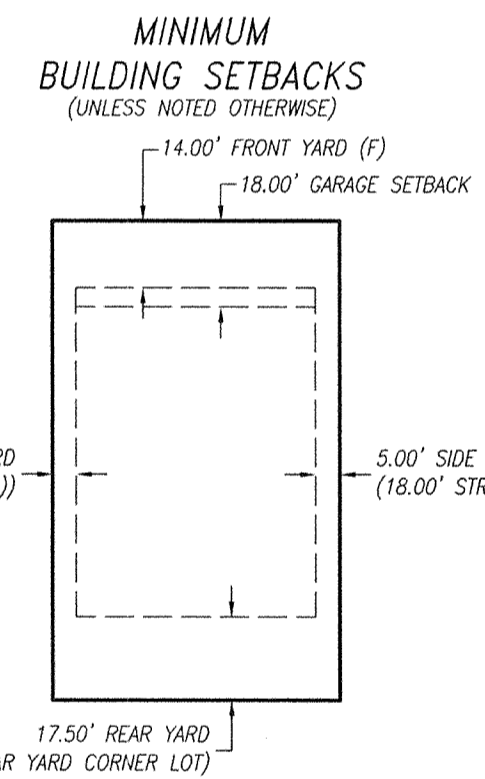
A SUBDIVISION IN THE SOUTH 1/2 OF THE SW 1/4 SEC. 3, T1N, R3E, W.M.,  
CITY OF CAMAS, CLARK COUNTY, WASHINGTON  
CITY OF CAMAS MINOR MODIFICATION TO BELZ PLACE SUBDIVISION FINAL ORDER #SUB05-14  
MARCH 2016

| LINE TABLE |               |          | CURVE TABLE |             |         |            |
|------------|---------------|----------|-------------|-------------|---------|------------|
| LINE       | BEARING       | DISTANCE | CURVE       | DELTA ANGLE | RADIUS  | ARC LENGTH |
| L1         | N 48°16'34" W | 5.42'    | C1          | 7°33'38"    | 179.00' | 23.62'     |
| L2         | N 29°24'44" E | 19.00'   | C2          | 71°39'28"   | 50.00'  | 62.53'     |
| L3         | N 00°41'57" E | 23.75'   | C3          | 54°39'24"   | 52.52'  | 50.10'     |
| L4         | N 64°15'56" E | 5.00'    | C4          | 90°38'29"   | 20.00'  | 31.63'     |
| L5         | N 29°24'44" E | 22.94'   | C5          | 89°19'57"   | 20.00'  | 31.18'     |
| L6         | N 49°12'38" W | 24.21'   | C6          | 90°40'13"   | 20.00'  | 31.65'     |
| L7         | N 45°44'11" E | 31.00'   | C7          | 66°25'45"   | 20.00'  | 23.19'     |
| L8         | N 48°16'34" W | 5.42'    | C8          | 5°30'04"    | 190.00' | 18.24'     |
| L9         | N 72°42'38" W | 20.00'   | C9          | 4°04'35"    | 135.00' | 9.60'      |
| L10        | N 00°41'57" E | 23.90'   | C10         | 89°23'51"   | 20.00'  | 31.20'     |
| L11        | N 00°41'57" E | 23.60'   | C11         | 11°20'23"   | 75.00'  | 14.64'     |
| L12        | N 11°49'19" E | 20.00'   | C12         | 92°59'05"   | 20.00'  | 32.46'     |
| L13        | N 25°44'04" W | 6.08'    | C13         | 8°04'52"    | 128.00' | 18.05'     |
| L14        | N 56°30'41" E | 20.00'   | C14         | 91°07'07"   | 20.00'  | 31.81'     |
| L15        | N 51°25'21" E | 20.00'   | C15         | 2°53'52"    | 132.00' | 6.66'      |
| L16        | N 48°16'34" W | 5.42'    | C16         | 1°51'42"    | 286.00' | 9.29'      |
| L17        | N 43°15'21" W | 18.21'   | C17         | 86°03'53"   | 20.00'  | 30.04'     |
| L18        | N 88°48'24" W | 12.06'   | C18         | 51°55'03"   | 44.00'  | 39.87'     |
| L19        | N 88°48'24" W | 12.40'   | C19         | 82°53'56"   | 20.00'  | 28.94'     |
| L20        | N 37°12'00" E | 3.36'    | C20         | 3°03'06"    | 20.00'  | 11.89'     |
| L21        | N 01°48'15" E | 10.21'   | C21         | 8°52'15"    | 96.00'  | 14.86'     |
| L22        | N 88°48'14" W | 10.21'   | C22         | 90°00'00"   | 20.00'  | 31.42'     |
|            |               |          | C23         | 52°11'36"   | 25.00'  | 22.77'     |
|            |               |          | C24         | 51°02'09"   | 25.00'  | 22.27'     |
|            |               |          | C25         | 1°09'27"    | 25.00'  | 0.51'      |
|            |               |          | C26         | 123°02'28"  | 45.00'  | 96.64'     |
|            |               |          | C27         | 30°59'17"   | 45.00'  | 24.34'     |
|            |               |          | C28         | 50°10'17"   | 25.00'  | 21.89'     |
|            |               |          | C29         | 26°20'55"   | 126.00' | 57.94'     |
|            |               |          | C30         | 6°45'30"    | 126.00' | 19.26'     |
|            |               |          | C31         | 17°35'25"   | 126.00' | 38.68'     |
|            |               |          | C32         | 13°30'59"   | 120.00' | 28.31'     |
|            |               |          | C33         | 21°20'13"   | 120.00' | 44.69'     |
|            |               |          | C34         | 7°45'15"    | 234.00' | 31.67'     |
|            |               |          | C35         | 122°23'22"  | 234.00' | 50.74'     |
|            |               |          | C36         | 22°15'41"   | 234.00' | 9.66'      |
|            |               |          | C37         | 9°51'56"    | 186.00' | 32.03'     |
|            |               |          | C38         | 85°32'19"   | 20.00'  | 29.86'     |
|            |               |          | C39         | 54°17'16"   | 50.00'  | 47.37'     |
|            |               |          | C40         | 4°48'55"    | 100.00' | 83.45'     |
|            |               |          | C41         | 36°52'12"   | 20.00'  | 12.87'     |
|            |               |          | C42         | 5°45'53"    | 120.00' | 12.07'     |



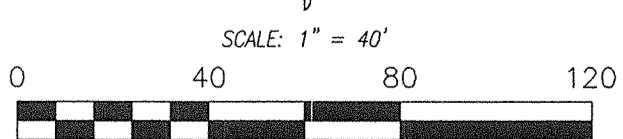
DETAIL "B"  
NOT TO SCALE

DETAIL "C"  
NOT TO SCALE



### LEGEND

- FOUND MONUMENT AS DESCRIBED
- ⊙ 1/2" X 24" IRON ROD W/PLASTIC CAP (OLSON ENG PLS 17686) TO BE SET AFTER THE RECORDING OF THIS FINAL PLAT
- ⊕ BRASS SCREW WITH WASHER (OLSON ENG PLS 17686) TO BE SET IN CURB ON A PROJECTION OF THE LOT LINE (GOOD FOR LINE ONLY - NOT DISTANCE)
- ⊙ SET 1/2" X 24" IRON ROD W/PLASTIC CAP (OLSON ENG PLS 17686) DURING THIS SURVEY
- B.S.L. BUILDING SETBACK LINE
- P.T.E. PUBLIC TRAIL EASEMENT
- P.S.S.E. PUBLIC SANITARY SEWER EASEMENT
- S.W.E. STORM WATER EASEMENT (PRIVATE)
- Ⓡ REFERENCE EASEMENT PROVISION NOTE
- F FRONT YARD SETBACK
- SS STREET SIDE YARD SETBACK
- PLAT BOUNDARY
- EXISTING TAX LOT LINE
- CENTERLINE RIGHT-OF-WAY
- LOT LINE AND RIGHT-OF-WAY MARGIN
- EXISTING RIGHT-OF-WAY MARGIN
- EASEMENT (AS NOTED)
- BUILDING SETBACK LINE
- WETLAND



### BASIS OF BEARINGS

RECORD OF SURVEY BY OLSON ENGINEERING, INC. (40-173)  
WASHINGTON STATE PLANE COORDINATE SYSTEM, SOUTH ZONE FROM  
CLARK COUNTY GPS CONTROL NETWORK POINTS #0055 AND #0076.

