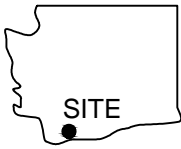


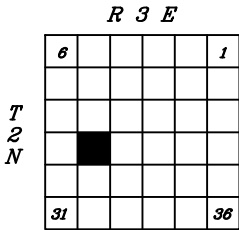
WASHINGTON



45.6471° Latitude
-122.4560° Longitude

LOCATION MAP

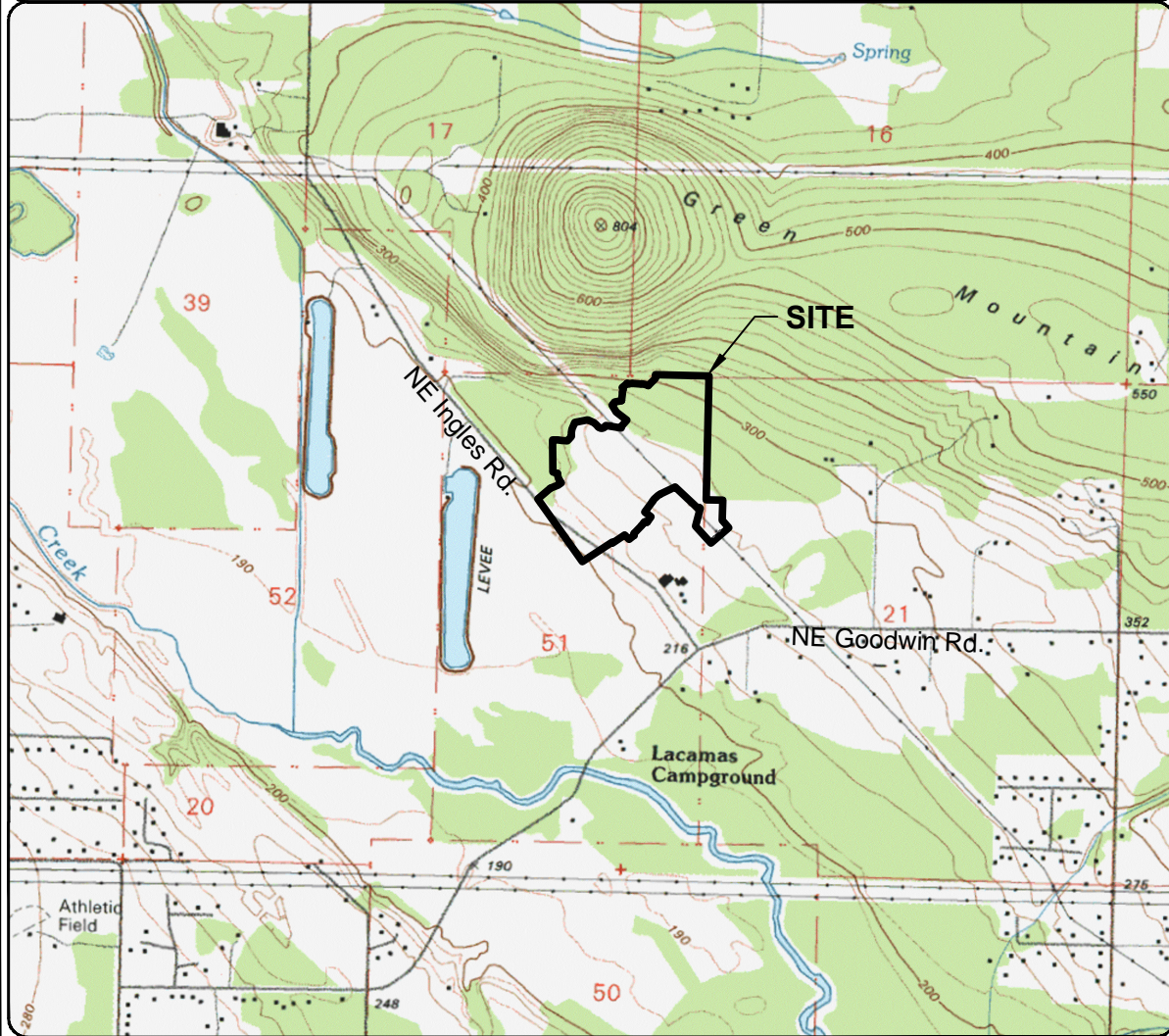
PROJECT VICINITY MAP




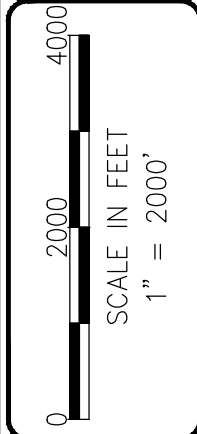
NOTE:
USGS topographic quadrangle map reproduced using MAPTECH Inc., Terrain Navigator Pro software.

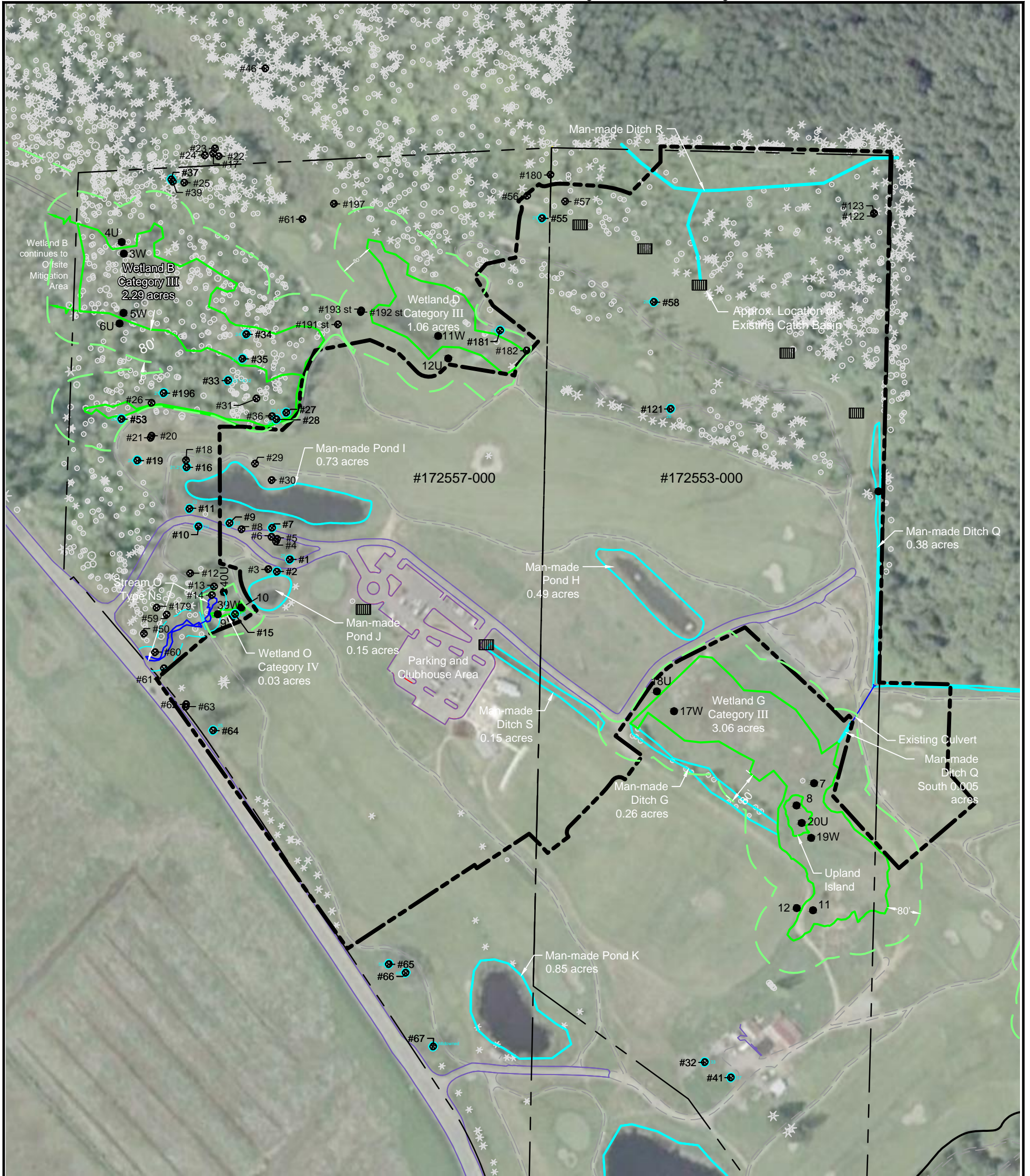
Figure 1
VICINITY MAP
Green Mountain Mixed Use PRD - Phase 1
Green Mountain Land, LLC
City of Camas, Clark County, Washington
Section 20, Township 2N, Range 3E, W.M.

DATE: 12/19/14
DWN: JKJ
REQ. BY: CS
PRJ. MGR: AA/CS
CHK:
PROJECT NO: 2048.01



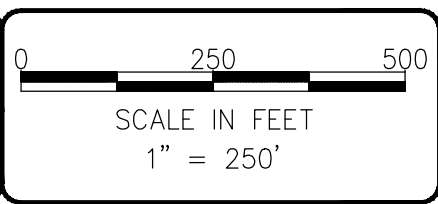
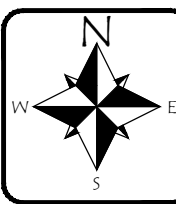
ECOLOGICAL LAND SERVICES, INC.

1157 3rd Ave., Suite 220
Longview, WA 98632
Phone: (360) 578-1371 Fax: (360) 414-9305





LEGEND:

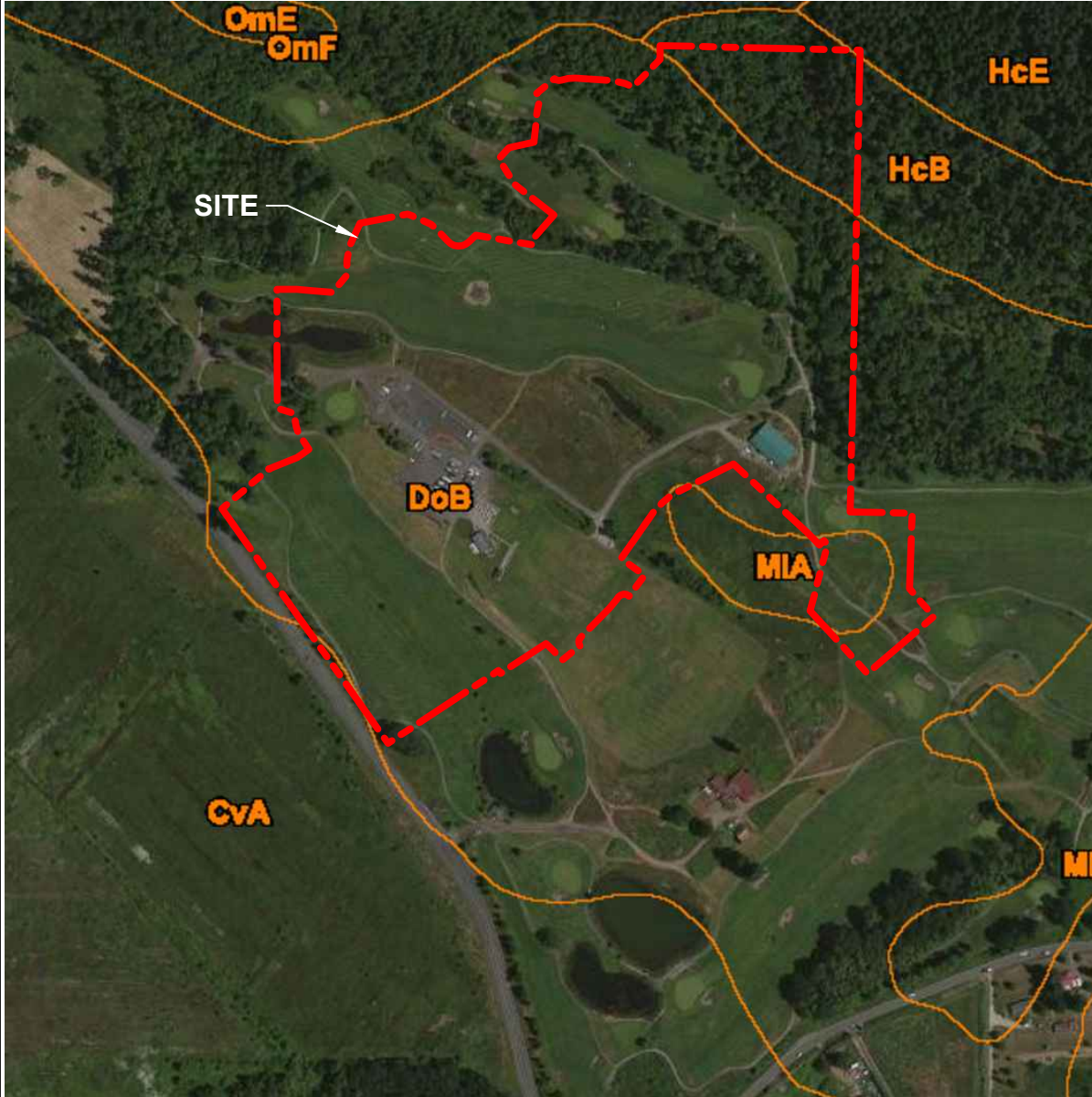
- Phase I Boundary (53 acres)
- Taxlot Boundary
- Wetland
- Wetland Buffer
- Man-made Pond or Ditch
- Stream
- Stream Buffer
- Existing Gravel Path
- Existing Pavement
- Existing Catch Basin
- #121 ⊕ Jurisdictional Oak Tree (>20" DBH)
- #22 ● Oak Tree
- * Tree Survey (WRG Design)
- Test Plot



ECOLOGICAL LAND SERVICES, INC.
 1157 3rd Ave., Suite 220
 Longview, WA 98632
 Phone: (360) 578-1371 Fax: (360) 414-9305

DATE: 12/19/14
 DWN: JKJ
 REQ. BY: CS
 PRJ. MGR: AA/CS
 CHK:
 PROJECT NO:
 2048.01

Figure 2
SITE MAP
 Green Mountain Mixed Use PRD - Phase 1
 Green Mountain Land, LLC
 City of Camas, Clark County, Washington
 Section 20, Township 2N, Range 3E, W.M.

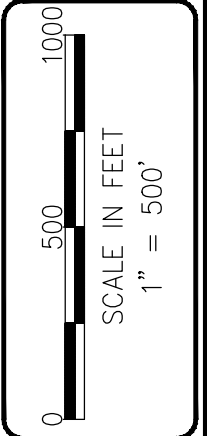
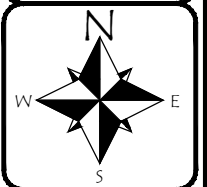



LEGEND:

- CvA** Cove silty clay loam, 0 to 3 percent slopes. Hydric.
- DoB** Dollar loam, 0 to 5 percent slopes. Not hydric.
- HcB** Hesson clay loam, 0 to 8 percent slopes. Not hydric.
- MIA** McBee silt loam, coarse variant, 0 to 3 percent slopes. Not hydric.
- OmF** Olympic stony clay loam, 30 to 60 percent slopes. Not hydric.

NOTE(S):

1. Map provided on-line by NRCS at web address:
<http://websoilsurvey.nrcs.usda.gov/app/>




 ECOLOGICAL LAND SERVICES, INC.
 1157 3rd Ave., Suite 220
 Longview, WA 98632
 Phone: (360) 578-1371 Fax: (360) 414-9305

DATE: 12/19/14
 DWN: JKJ
 REQ. BY: CS
 PRJ. MGR: AA/CS
 CHK:
 PROJECT NO:
 2048.01

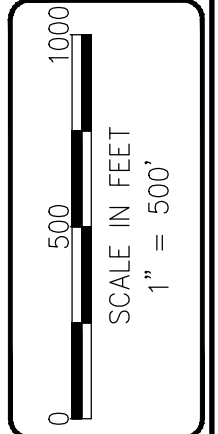
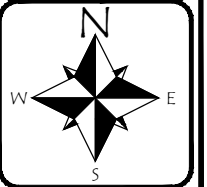

Figure 3
 SOIL SURVEY MAP
 Green Mountain Mixed Use PRD - Phase 1
 Green Mountain Land, LLC
 City of Camas, Clark County, Washington
 Section 20, Township 2N, Range 3E, W.M.



No mapped wetlands indicated onsite by US Fish & Wildlife Service.

NOTE(S):

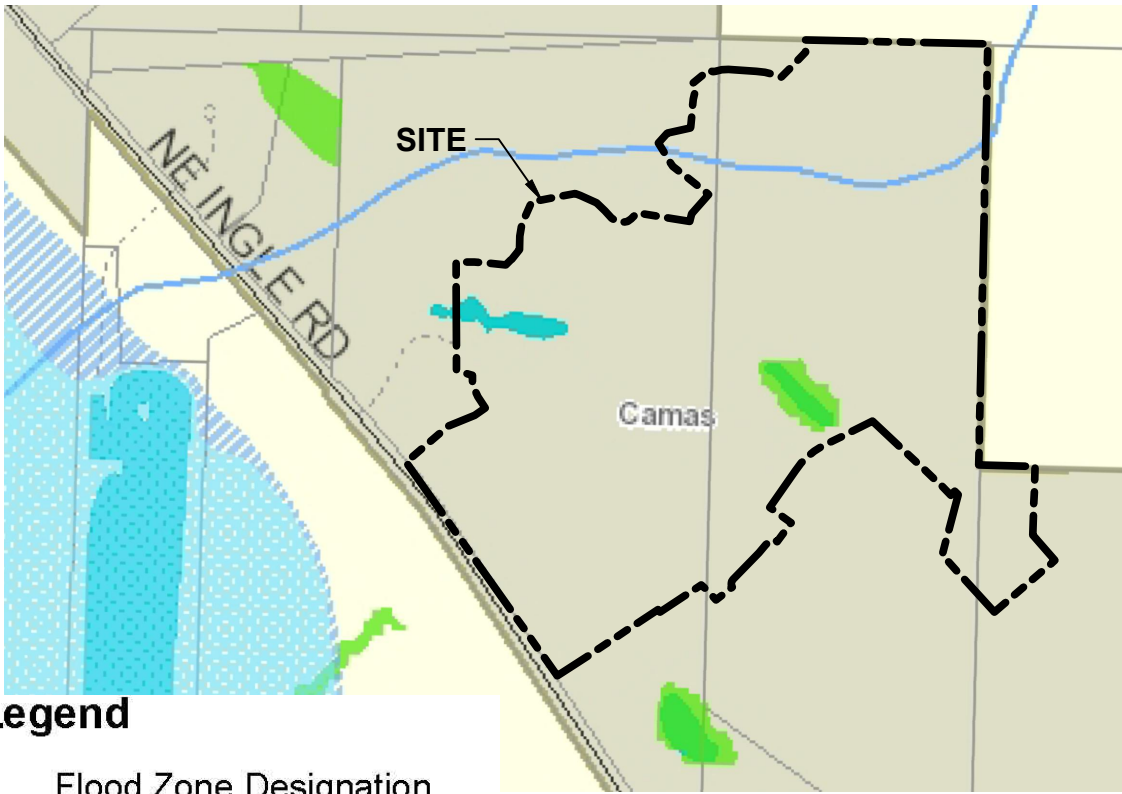
1. Map provided on-line by US Fish & Wildlife Service at web address:
<http://www.fws.gov/wetlands/data/index.html>

ECOLOGICAL LAND SERVICES, INC.
 1157 3rd Ave., Suite 220
 Longview, WA 98632
 Phone: (360) 578-1371 Fax: (360) 414-9305

DATE: 12/19/14
 DWN: JKJ
 REQ. BY: CS
 PRJ. MGR: AA/CS
 CHK:
 PROJECT NO:
 2048.01

Figure 4
NATIONAL WETLANDS INVENTORY MAP
 Green Mountain Mixed Use PRD - Phase 1
 Green Mountain Land, LLC
 City of Camas, Clark County, Washington
 Section 20, Township 2N, Range 3E, W.M.



Legend

Flood Zone Designation

- Floodway
- Floodway Fringe
- 500 Year Flood Area

- Wetlands Presence
- Stream/Fish Habitat
- Unknown

Priority Habitat and Species

- Non-riparian Habitat Conservation
- Species Area
- Riparian Habitat Conservation Area
- Priority Habitat Buffer

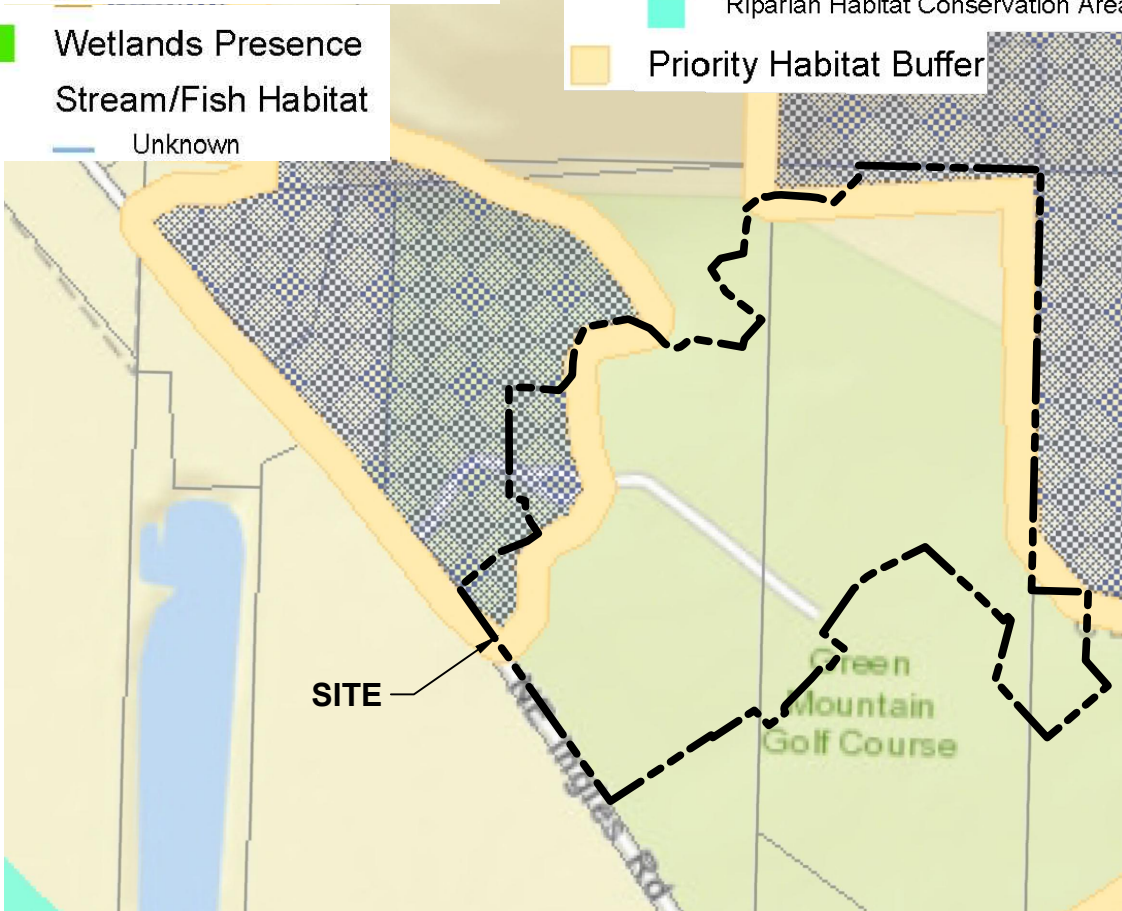
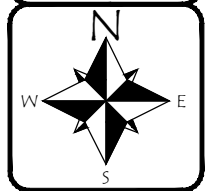
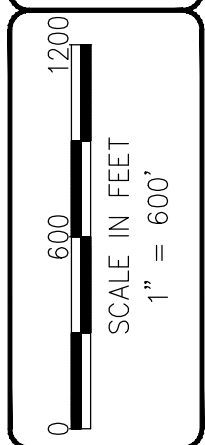


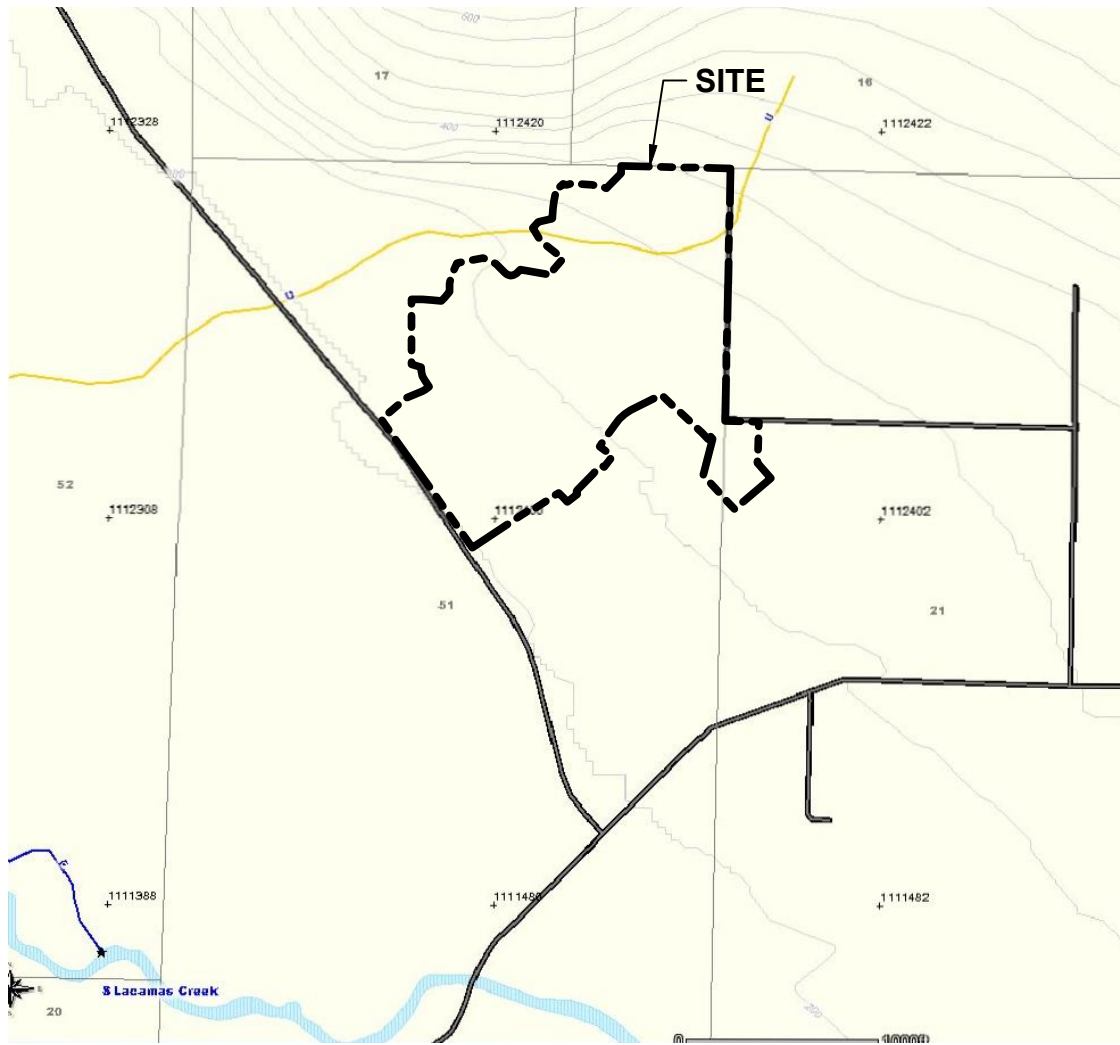
Figure 5
CLARK COUNTY CRITICAL AREAS
 Green Mountain Mixed Use PRD - Phase 1
 Green Mountain Land, LLC
 City of Camas, Clark County, Washington
 Section 20, Township 2N, Range 3E, W.M.

DATE: 12/19/14
 DWN: JKJ
 REQ. BY: CS
 PRJ. MGR: AA/CS
 CHK:
 PROJECT NO:
 2048.01

ECOLOGICAL LAND SERVICES, INC.

 1157 3rd Ave., Suite 220
 Longview, WA 98632
 Phone: (360) 578-1371 Fax: (360) 414-9305

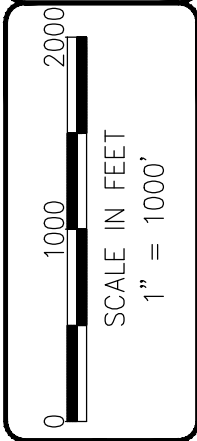





LEGEND:

- Stream Water Type S, F, N
- U, Unknown Water Type
- Water Type Change
- Open Water

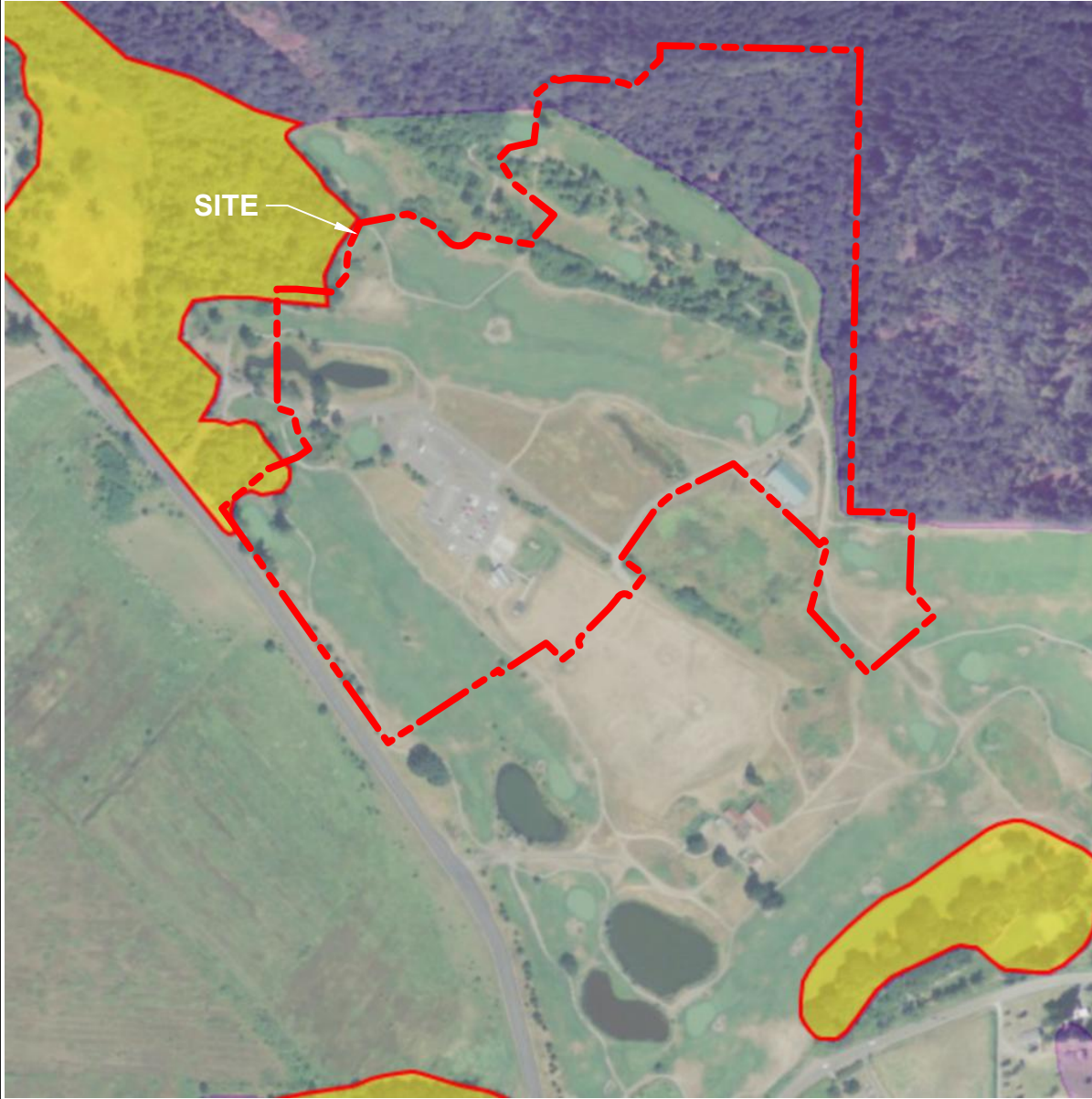
NOTE: Map provided on-line by Washington State Department of Natural Resources at web address: <http://fortress.wa.gov/dnr/app1/Fpars/viewer.htm>



ECOLOGICAL LAND SERVICES, INC.

 1157 3rd Ave., Suite 220
 Longview, WA 98632
 Phone: (360) 578-1371 Fax: (360) 414-9305

DATE: 12/19/14
 DWN: JKJ
 REQ. BY: CS
 PRJ. MGR: AA/CS
 CHK:
 PROJECT NO:
 2048.01

Figure 6
DNR STREAM TYPE MAP
 Green Mountain Mixed Use PRD - Phase 1
 Green Mountain Land, LLC
 City of Camas, Clark County, Washington
 Section 20, Township 2N, Range 3E, W.M.

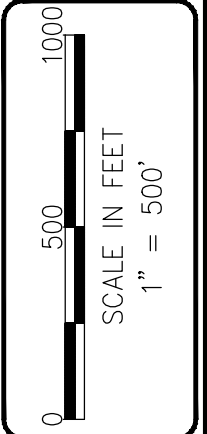



LEGEND:

- Oak Woodland
- Biodiversity Areas and Corridor

NOTE(S):

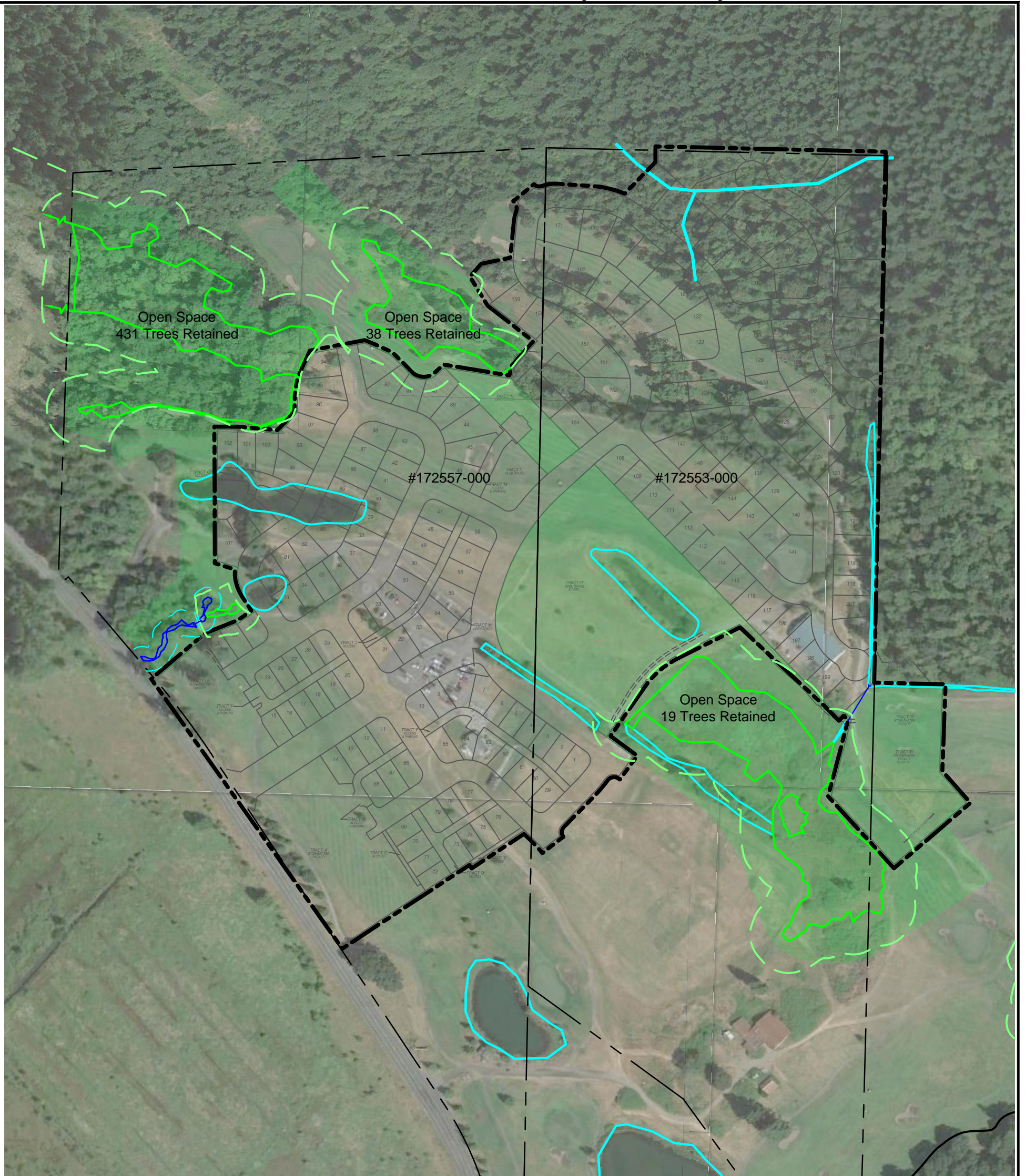
1. Priority habitat and species map provided by WDFW at web address: <http://apps.wdfw.wa.gov/phsontheweb/>



ECOLOGICAL LAND SERVICES, INC.

 1157 3rd Ave., Suite 220
 Longview, WA 98632
 Phone: (360) 578-1371 Fax: (360) 414-9305

DATE: 12/19/14
 DWN: JKJ
 REQ. BY: CS
 PRJ. MGR: AA/CS
 CHK:
 PROJECT NO:
 2048.01

Figure 7
WDFW PRIORITY HABITAT AND SPECIES
 Green Mountain Mixed Use PRD - Phase 1
 Green Mountain Land, LLC
 City of Camas, Clark County, Washington
 Section 20, Township 2N, Range 3E, W.M.

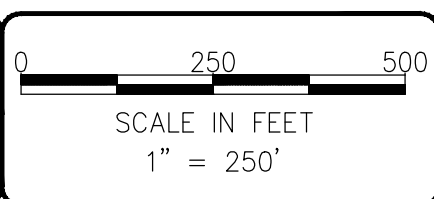
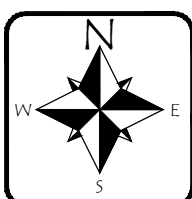


LEGEND:

- Phase I Boundary (53 acres)
- Taxlot Boundary
- Wetland
- Wetland Buffer
- Man-made Pond or Ditch
- Stream
- Stream Buffer
- Proposed Open Space/Tree Preservation Area

NOTE(S):

1. Development plan provided by Olson Engineering, Inc.
Aerial photography from Google Earth™.

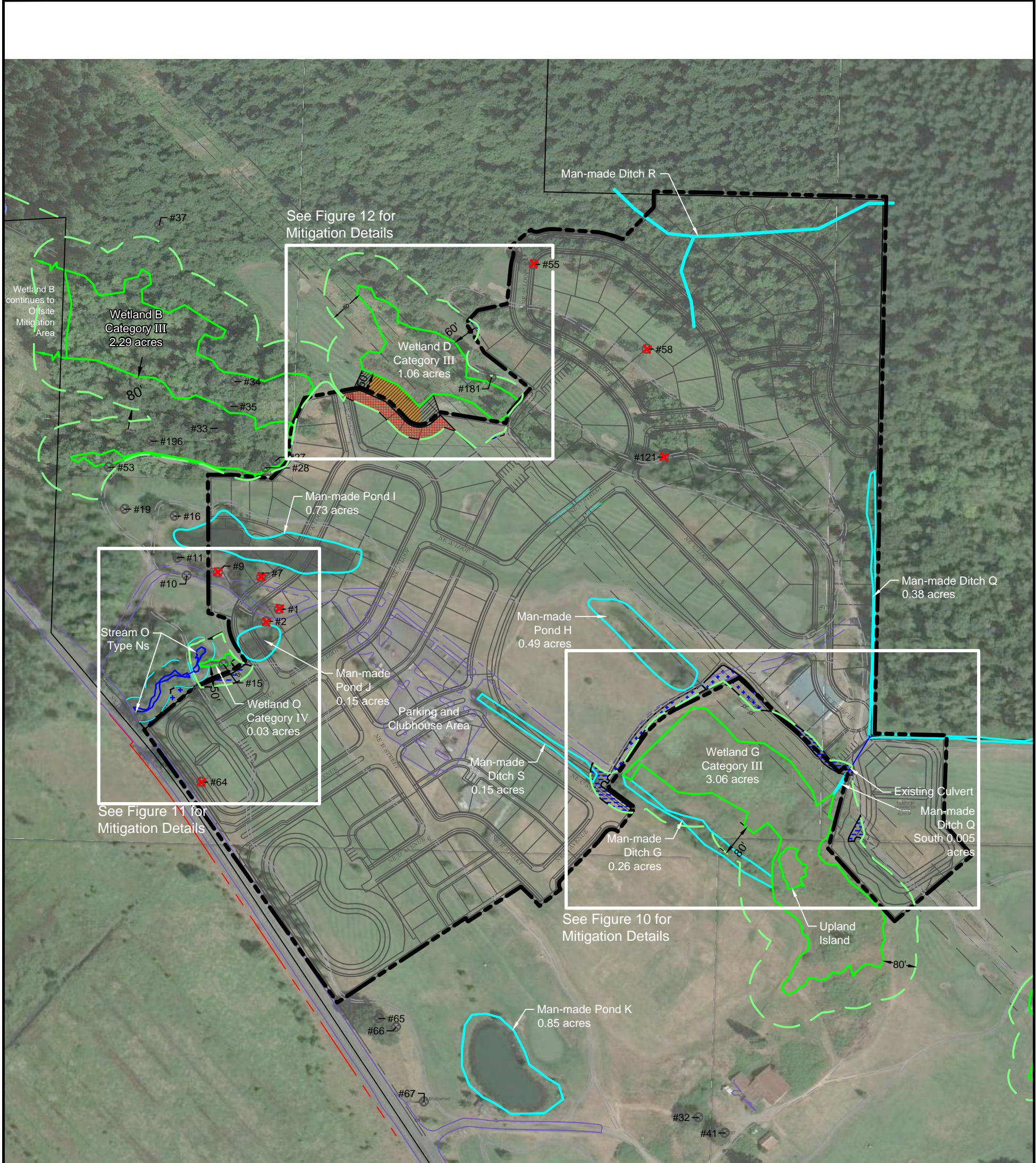


ECOLOGICAL LAND SERVICES, INC.

 1157 3rd Ave., Suite 220
 Longview, WA 98632
 Phone: (360) 578-1371 Fax: (360) 414-9305

DATE: 12/19/14
 DWN: JKJ
 REQ. BY: CS
 PRJ. MGR: AA/CS
 CHK:
 PROJECT NO:
 2048.01

Figure 8
PROPOSED PROJECT & TREE PRESERVATION
 Green Mountain Mixed Use PRD - Phase 1
 Green Mountain Land, LLC
 City of Camas, Clark County, Washington
 Section 20, Township 2N, Range 3E, W.M.

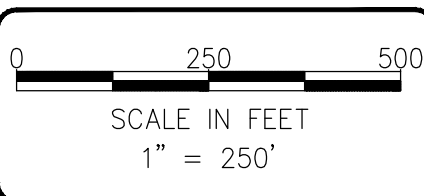
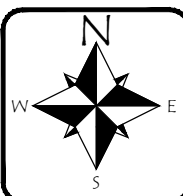


LEGEND:

- Phase I Boundary (53 acres)
- - - Taxlot Boundary
- Wetland
- - - Wetland Buffer
- Man-made Pond or Ditch
- Existing Culvert
- Stream
- Stream Buffer
- - - Existing Gravel Path
- Existing Pavement
- #121 Jurisdictional Oak Tree (>20" DBH)
- Buffer Averaging-OUT
- Buffer Averaging-IN
- #121 Jurisdictional Oak Tree to be Removed (8)
- Oak Mitigation Area (6,526 sq. ft.)
- Buffer Impact Area (8,405 sq. ft.)
- Buffer Enhancement Area (11,694 sq. ft.)

NOTE(S):

1. Development plan provided by Olson Engineering, Inc. Aerial photography from Google Earth™.

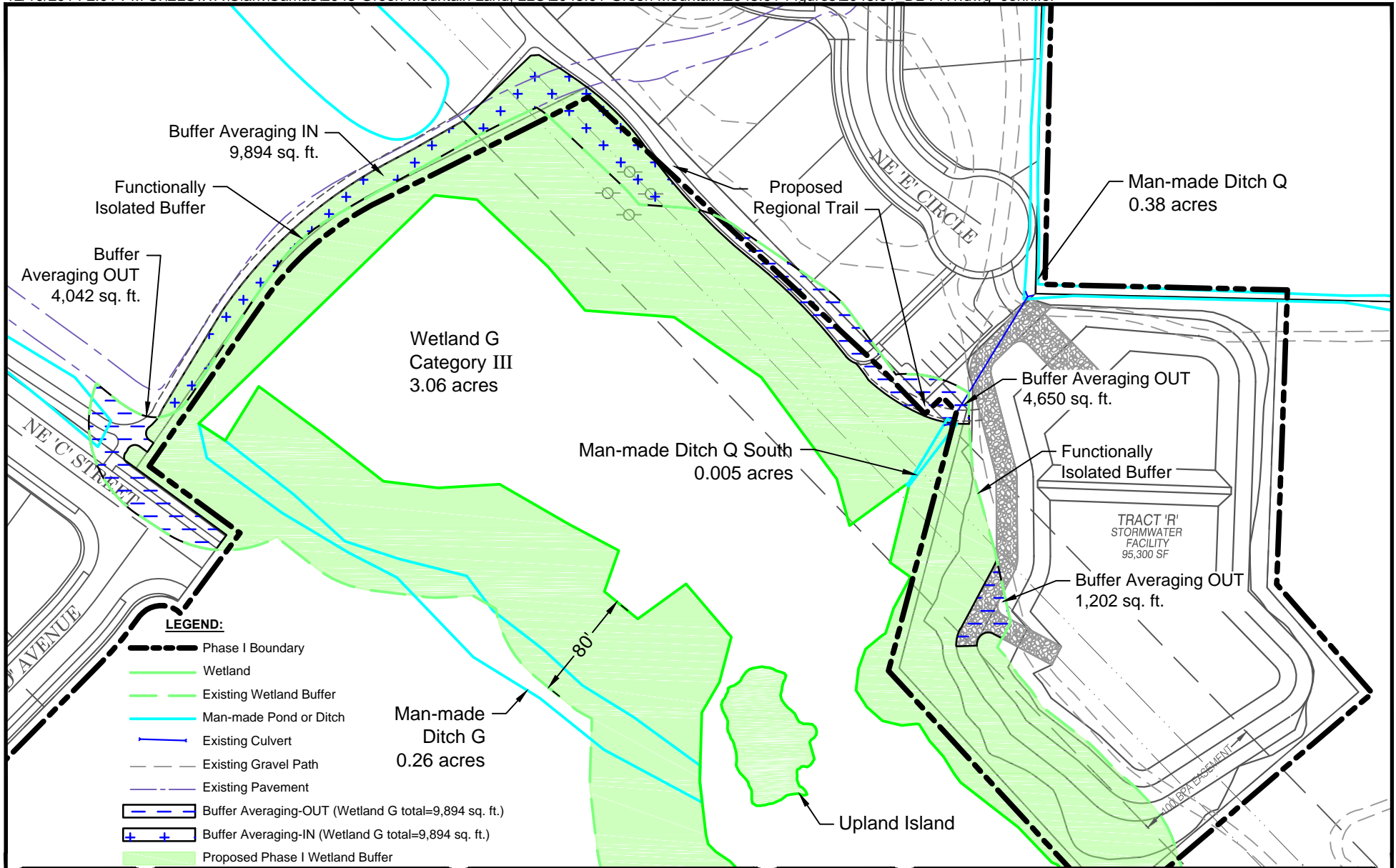


ECOLOGICAL LAND SERVICES, INC.

1157 3rd Ave., Suite 220
 Longview, WA 98632
 Phone: (360) 578-1371 Fax: (360) 414-9305

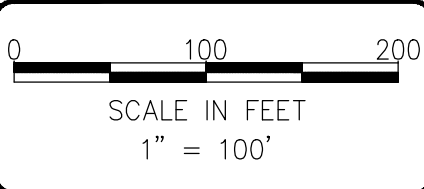
DATE: 12/19/14
 DWN: JKJ
 REQ. BY: CS
 PRJ. MGR: AA/CS
 CHK:
 PROJECT NO:
 2048.01

Figure 9
MITIGATION SITE MAP
 Green Mountain Mixed Use PRD - Phase 1
 Green Mountain Land, LLC
 City of Camas, Clark County, Washington
 Section 20, Township 2N, Range 3E, W.M.



LEGEND:

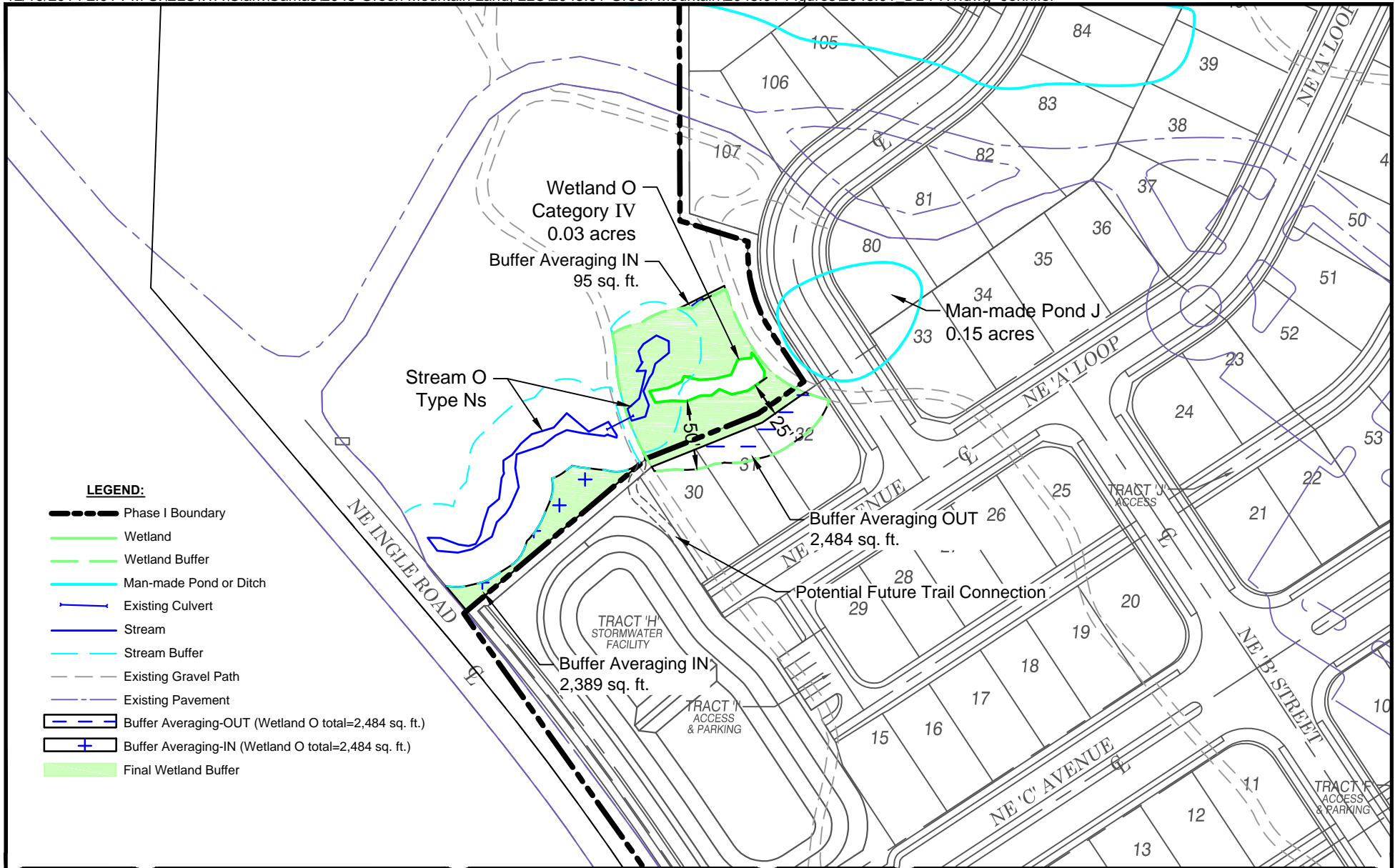
- Phase I Boundary
- Wetland
- Existing Wetland Buffer
- Man-made Pond or Ditch
- Existing Culvert
- Existing Gravel Path
- Existing Pavement
- Buffer Averaging-OUT (Wetland G total=9,894 sq. ft.)
- Buffer Averaging-IN (Wetland G total=9,894 sq. ft.)
- Proposed Phase I Wetland Buffer



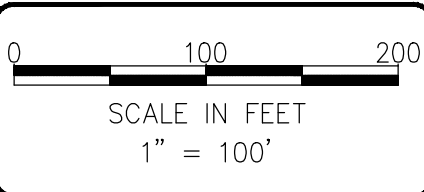
ECOLOGICAL LAND SERVICES, INC.
 1157 3rd Ave., Suite 220
 Longview, WA 98632
 Phone: (360) 578-1371 Fax: (360) 414-9305

DATE: 12/19/14
 DWN: JKJ
 REQ. BY: CS
 PRJ. MGR: AA/CS
 CHK:
 PROJECT NO:
 2048.01

Figure 10
MITIGATION DETAIL A
 Green Mountain Mixed Use PRD - Phase 1
 Green Mountain Land, LLC
 City of Camas, Clark County, Washington
 Section 20, Township 2N, Range 3E, W.M.



- LEGEND:**
- Phase I Boundary
 - Wetland
 - Wetland Buffer
 - Man-made Pond or Ditch
 - Existing Culvert
 - Stream
 - Stream Buffer
 - Existing Gravel Path
 - Existing Pavement
 - Buffer Averaging-OUT (Wetland O total=2,484 sq. ft.)
 - Buffer Averaging-IN (Wetland O total=2,484 sq. ft.)
 - Final Wetland Buffer






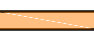

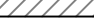

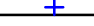
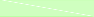


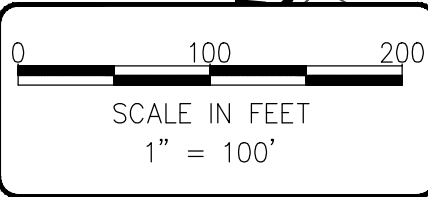
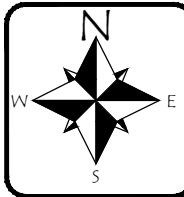
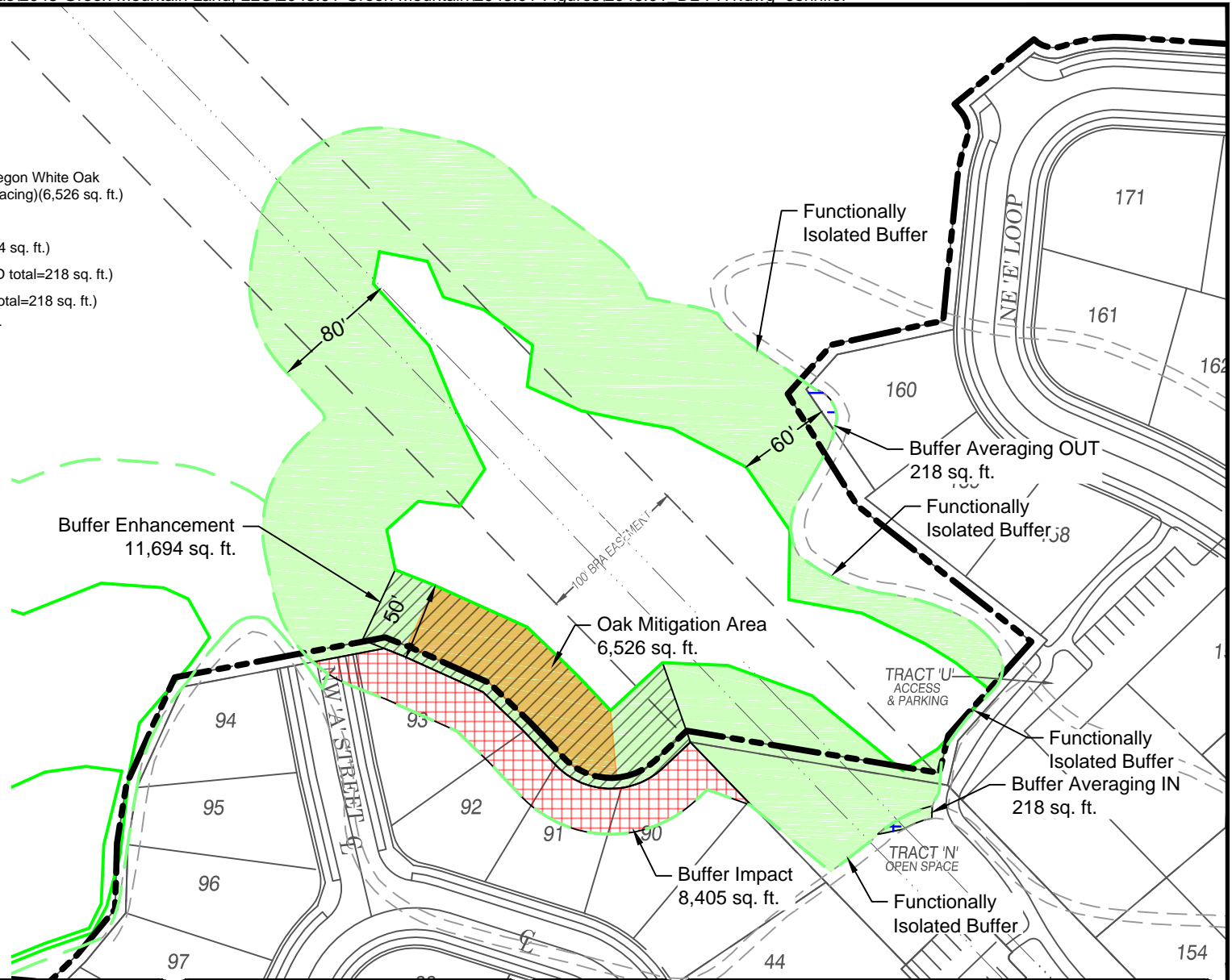
ECOLOGICAL LAND SERVICES, INC.
 1157 3rd Ave., Suite 220
 Longview, WA 98632
 Phone: (360) 578-1371 Fax: (360) 414-9305

DATE: 12/19/14
 DWN: JKJ
 REQ. BY: CS
 PRJ. MGR: AA/CS
 CHK:
 PROJECT NO:
 2048.01

Figure 11
 MITIGATION DETAIL B
 Green Mountain Mixed Use PRD - Phase 1
 Green Mountain Land, LLC
 City of Camas, Clark County, Washington
 Section 20, Township 2N, Range 3E, W.M.

LEGEND:

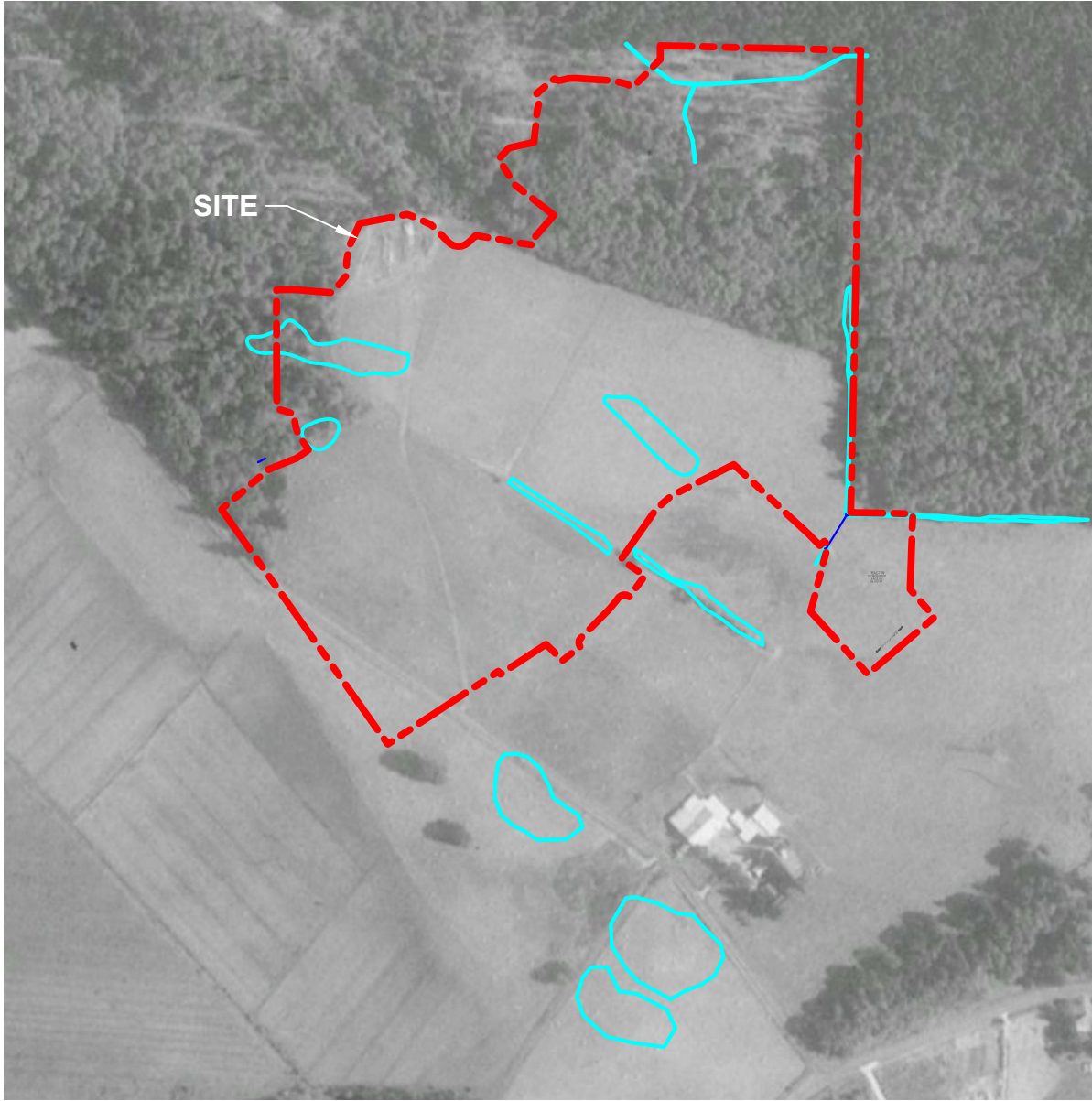
-  Phase I Boundary
-  Wetland
-  Wetland Buffer
-  Existing Gravel Path
-  Existing Pavement
-  Oak Mitigation Area (Plant 16 Oregon White Oak Saplings-1.5" Caliper Min.-20' Spacing)(6,526 sq. ft.)
-  Buffer Impact Area (8,405 sq. ft.)
-  Buffer Enhancement Area (11,694 sq. ft.)
-  Buffer Averaging OUT (Wetland D total=218 sq. ft.)
-  Buffer Averaging IN (Wetland D total=218 sq. ft.)
-  Proposed Phase I Wetland Buffer



ECOLOGICAL LAND SERVICES, INC.
 1157 3rd Ave., Suite 220
 Longview, WA 98632
 Phone: (360) 578-1371 Fax: (360) 414-9305



DATE: 12/19/14
 DWN: JKJ
 REQ. BY: CS
 PRJ. MGR: AA/CS
 CHK:
 PROJECT NO:
 2048.01

Figure 12
MITIGATION DETAIL C
 Green Mountain Mixed Use PRD - Phase 1
 Green Mountain Land, LLC
 City of Camas, Clark County, Washington
 Section 20, Township 2N, Range 3E, W.M.



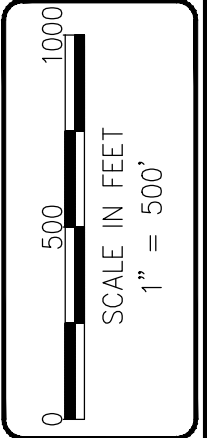
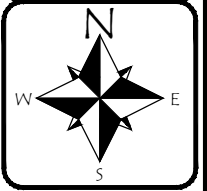
SITE


LEGEND:

-  Phase I Boundary
-  Manmade Pond/Ditch

NOTE(S):

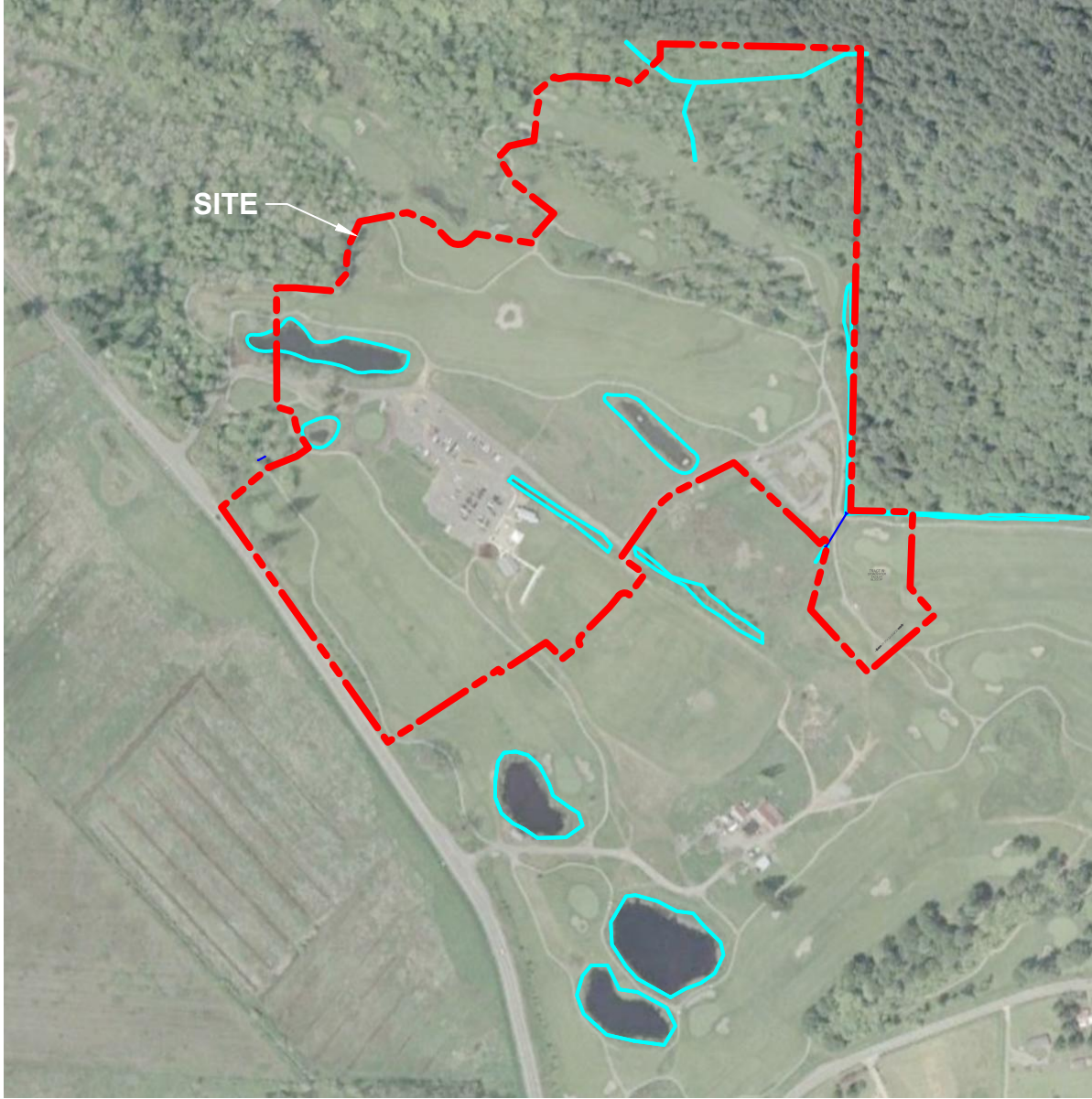
1. Aerial photo (July 15, 1990) provided by Google Earth™.





 **ECOLOGICAL LAND SERVICES, INC.**
1157 3rd Ave., Suite 220
Longview, WA 98632
Phone: (360) 578-1371 Fax: (360) 414-9305

DATE: 12/19/14
DWN: JKJ
REQ. BY: CS
PRJ. MGR: AA/CS
CHK:
PROJECT NO:
2048.01

Figure 13
HISTORIC AERIAL PHOTO-1990
Green Mountain Mixed Use PRD - Phase 1
Green Mountain Land, LLC
City of Camas, Clark County, Washington
Section 20, Township 2N, Range 3E, W.M.

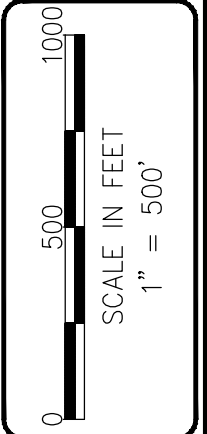



LEGEND:

-  Phase I Boundary
-  Manmade Pond/Ditch

NOTE(S):

1. Aerial photo (May 1, 2002) provided by Google Earth™.



 **ECOLOGICAL LAND SERVICES, INC.**
 1157 3rd Ave., Suite 220
 Longview, WA 98632
 Phone: (360) 578-1371 Fax: (360) 414-9305

DATE: 12/19/14
 DWN: JKJ
 REQ. BY: CS
 PRJ. MGR: AA/CS
 CHK:
 PROJECT NO:
 2048.01

Figure 14
HISTORIC AERIAL PHOTO-2002
 Green Mountain Mixed Use PRD - Phase 1
 Green Mountain Land, LLC
 City of Camas, Clark County, Washington
 Section 20, Township 2N, Range 3E, W.M.