

**Community Development Department**

Notice of Rescheduled Public Hearing
The Village at Camas Meadows
(City File No. SUB15-04)

“NOTICE IS HEREBY GIVEN” that a public hearing for “The Village at Camas Meadows” that was scheduled for May 25, 2016 has been canceled and rescheduled. The rescheduled public hearing will be held on a preliminary plat application for The Village at Camas Meadows Subdivision, which is a 77-lot single-family and 138 multi-family apartment unit residential subdivision development. The 19.5 acre site is located east of NW Payne Street between NW Lake Road and NW Camas Meadows Drive in the SW ¼ of Section 28, Township 2 North, Range 3 East; Camas, WA.

PUBLIC HEARING: The Village at Camas Meadows Subdivision (SUB15-04) will be considered at a rescheduled public hearing on **June 16, 2016, at 4:00 p.m.**, or soon thereafter, before the Hearings Examiner in the City Council Chambers, 616 NE 4th Avenue, Camas, WA.

APPLICATION MATERIALS: The application included the following: project narrative; environmental studies; engineering reports, and preliminary plat drawings, as required for a complete application pursuant to Camas Municipal Code (CMC) 18.55.110 and 17.11.030.B. These documents are available for viewing at the Community Development Department (616 NE 4th Avenue, Camas, WA) during regular business hours Monday – Friday 8am-5pm.

MORE INFORMATION: The meeting agenda and supporting documents will be available for review on the city’s website at the “Minutes, Agenda & Videos” link within the drop-down menu that is labeled “Your Government” or at <http://www.ci.camass.wa.us/index.php/yourgovernment/minuteagendavideo>.

COMMENT INFORMATION: Parties interested in commenting on the preliminary plat application may testify in person at the public hearing, or may submit written comments by regular mail (616 NE 4th Ave., Camas, WA), or by email to communitydevelopment@cityofcamas.us. If anyone prefers to submit written comments for staff to submit on their behalf at the hearing, those comments must be received by the City Clerk at 616 NE 4th Ave., Camas, WA 98607, **prior to 3:00pm.**, on June 16, 2016, to be included in the record. Any questions regarding the application may be directed to Lauren Hollenbeck, Senior Planner, at (360) 817-1568.

Participate: All citizens are entitled to have equal access to the services, benefits and programs of the City of Camas. Please contact the City Clerk at (360) 834-6864 for special accommodations if needed. The City will provide translators for non-English speaking persons who request assistance at least three working days prior to a public meeting or hearing.

APPLICANT/ CONTACT:

HARB ENGINEERING, INC.
 CONTACT PERSON: GUS HARB, PE
 701 COLUMBIA ST., SUITE 111
 VANCOUVER, WA 98660
 PHONE: (360) 695-6520
 EMAIL: guss@harbengineering.com

OWNER:

CHLOE INVESTMENT, LLC
 701 COLUMBIA ST., SUITE 111
 VANCOUVER, WA 98660

SURVEYOR:

MINISTER & GLAESER SURVEYING, LLC
 CONTACT PERSON: DAVE DENNY, PLS
 2200 E. EVERGREEN BLVD
 VANCOUVER, WA 98661
 PHONE: 360-694-3313

GEOTECHNICAL ENGINEER:

COLUMBIA WEST ENGINEERING, INC.
 CONTACT PERSON: DANIEL LEHTO, PE, GE
 11917 NE 95TH ST.
 VANCOUVER, WA 98682
 PHONE: 360-823-2900

ARBORIST:

AKS ENGINEERING AND FORESTRY VANCOUVER, LLC
 CONTACT PERSON: BRYCE HANSON, PE, LSIT, CERTIFIED ARBORIST
 9600 NE 126TH AVE., STE 2520
 VANCOUVER, WA 98682
 PHONE: 360-882-0419

PARCEL INFORMATION:

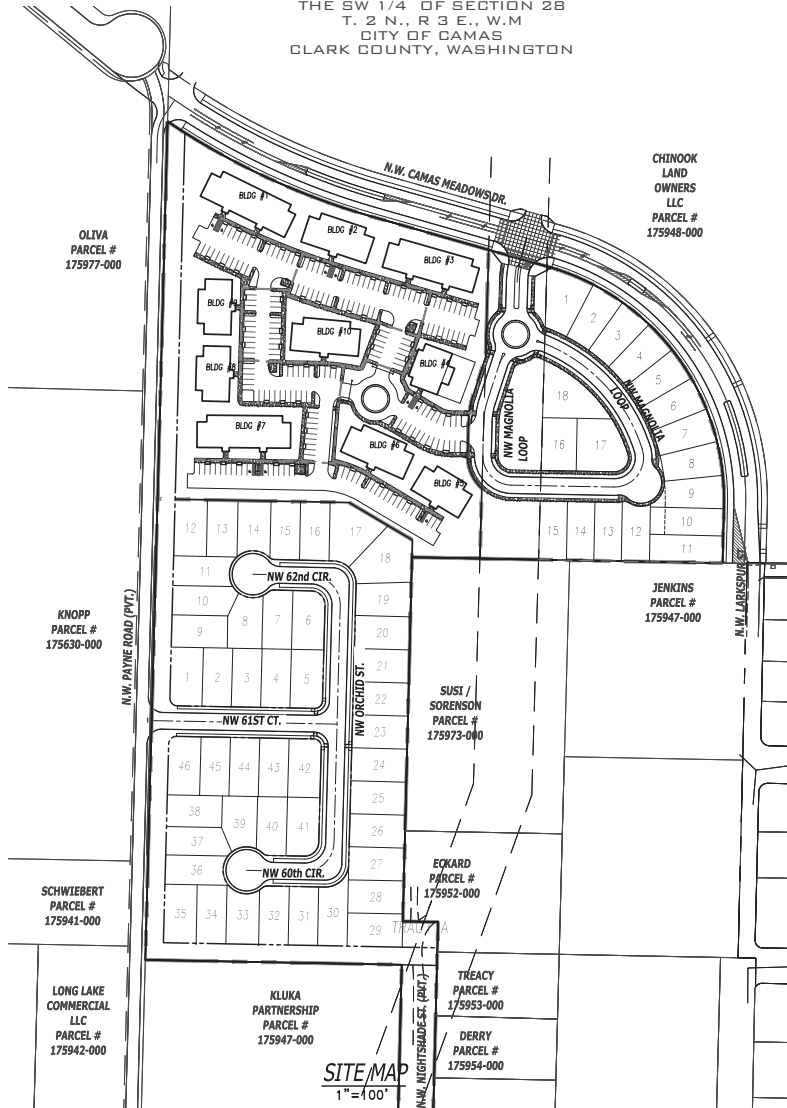
PARCEL # 175951-000
 PARCEL AREA IS: 19.5 ACRES

THE VILLAGE AT CAMAS MEADOWS

PARCEL # 175951-000
 IN A PORTION OF THE EAST
 HALF AND THE WEST HALF OF
 THE SW 1/4 OF SECTION 28
 T. 2 N., R 3 E., W.M
 CITY OF CAMAS
 CLARK COUNTY, WASHINGTON



VICINITY MAP
NOT TO SCALE



SHEET INDEX:

- P-00 COVER SHEET
- P-01 NOTES AND LEGEND
- P-02 EXISTING CONDITIONS PLAN
- P-03 EXISTING TREE SURVEY
- P-04 EXISTING TREE SURVEY
- P-05 PRELIMINARY PLAT COVER SHEET
- P-06 PRELIMINARY PLAT [PHASE 1]
- P-07A PRELIMINARY PLAT [PHASE 2]
- P-07B PRELIMINARY PLAT [PHASE 2]
- P-08 PRELIMINARY PLAT [PHASE 3]
- P-09 PRELIMINARY STORM DRAINAGE PLAN [PHASE 1]
- P-10 PRELIMINARY STORM DRAINAGE PLAN [PHASE 1]
- P-11 PRELIMINARY STORM DRAINAGE PLAN [PHASE 1]
- P-12 PRELIMINARY STORM DRAINAGE PLAN [FRONTAGE]
- P-13 PRELIMINARY SANITARY SEWER AND WATER PLAN [PHASE 1]
- P-14 PRELIMINARY SANITARY SEWER AND WATER PLAN [PHASE 2]
- P-15 PRELIMINARY SANITARY SEWER AND WATER PLAN [PHASE 3]
- P-16 PRELIMINARY PUBLIC IMPROVEMENTS PLAN AND PROFILE [NW CAMAS MEADOWS DR.]
- P-17 PRELIMINARY PUBLIC IMPROVEMENTS PLAN [NW PAYNE ST. AND NW LAKE RD.]
- P-18 PRELIMINARY TREE SURVEY PLAN [PHASE 1]
- P-19 PRELIMINARY TREE SURVEY PLAN [PHASE 2]
- P-20 PRELIMINARY TREE SURVEY PLAN [PHASE 3]
- P-21 PRELIMINARY TREE LIST
- P-22 PRELIMINARY STREET LIGHTING AND TREE PLAN [PHASE 1]
- P-23 PRELIMINARY STREET LIGHTING AND TREE PLAN [PHASE 2]
- P-24 PRELIMINARY STREET LIGHTING AND TREE PLAN [PHASE 3]
- P-25 PRELIMINARY STREET LIGHTING AND TREE PLAN [NW CAMAS MEADOWS DR.]
- P-26 PRELIMINARY SITE DETAILS

HARB ENGINEERING



**THE VILLAGE AT
CAMAS MEADOWS**

SHEET NAME:

COVER SHEET

DRAWN BY:
B.S.G.

DESIGNED BY:
B.S.G.

CHECKED BY:
G.G.H.

SHEET #
P-00

LAND DEVELOPMENT ENGINEERING
 PLANNING ENGINEERING
 CONSTRUCTION MANAGEMENT
 VANCOUVER, WA 98660
 701 COLUMBIA STREET, SUITE 111
 PHONE: (360) 695-6520 WWW.HARBENGINEERING.COM